



U.S. Department of the Interior  
Bureau of Land Management

# BLM Phoenix District Office Shooting Sports Sites Business Plan



**May 2024**

BLM Phoenix District Office Shooting Sports Sites Business Plan

[Recreation Fee Account: LVRDAZ\_\_\_\_0000]

**Recommendations, Reviews, and Approvals**

Recommended by:

---

Field Manager, Hassayampa Field Office

Date

---

Field Manager, Lower Sonoran Field Office

Date

Reviewed by:

---

Leon Thomas, District Manager, Phoenix District Office

Date

Approved by:

---

Raymond Suazo, Arizona State Director

Date

This business plan was prepared by the Bureau of Land Management’s Phoenix District Field Office pursuant to the Federal Lands Recreation Enhancement Act of 2004 (16 U.S.C. 6801-6814) and BLM recreation fee program policies. It establishes future management goals and priorities for the eight shooting sports sites (Church Camp, Box Canyon, Saddleback Mountain, Baldy Mountain, Narramore Road, Table Mesa Shooting Sports Facility, Table Mesa Southwest, Pipeline Range) within the Phoenix District Field Office.



# United States Department of the Interior



BUREAU OF LAND MANAGEMENT  
Phoenix District Office  
2020 E Bell Rd  
Phoenix, AZ 85022

In Reply Refer to:  
2932 (LLAZP0000)

Dear Reader,

I would like to present for your review and comment the Phoenix District Recreational Shooting Sports Sites Business Plan, which is managed by the Bureau of Land Management, Phoenix District Office (BLM). The district currently has four operational facilities with four more in the planning and development phase. The four existing facilities received an estimated visitation of 70,000 within the first year of operation. These facilities offer a wide range of recreational target shooting activities including pistol, long-range rifle, shotgun, archery and compressed air rifle. The first four facilities opened between 2022 and 2023 with the four remaining scheduled to be constructed by 2026.

This business plan proposes to establish new recreation fees for use of the Phoenix District's recreational shooting sites: Baldy Mountain, Church Camp Road, Narramore Road, Saddleback Mountain, and Table Mesa recreational shooting sites in Maricopa County, and Box Canyon Recreational Shooting Site in Pinal County. The fees will address facility maintenance and public safety needs due to increased use and cost of operation. The fees will also enable BLM to improve services and amenities desired by visitors and construct additional facilities.

Because of the special management required for the recreational shooting sites, we are proposing an Individual Special Recreation Permit (ISRP) for use of the recreational shooting sites, which would be designated as a "special area." The BLM is proposing a one-day permit of \$10.00, an individual \$25.00 monthly permit, and an individual \$80.00 annual permit. Children 16 and under are free with an adult permit holder. The fees were determined through a comparative analysis of similar recreation sites throughout the region and in compliance with the criteria in the Federal Lands Recreation Enhancement Act.

This business plan is available for a 30-day public comment period. Please include your address, phone number, email address, or other personal identifying information with your comment. Please be aware that your entire comment, including your personal identifying information, may be made publicly available at any time. While you can ask us in your comment to withhold your personal identifying information from public review, we cannot guarantee that we will be able to do so. BLM will not consider anonymous comments.

Written comments may be submitted by email to [blm\\_az\\_pdo\\_recreation@blm.gov](mailto:blm_az_pdo_recreation@blm.gov), in person at the Phoenix District Office, or via mail to BLM Phoenix District, Attn: Business Plan, 2020 E. Bell Road, Phoenix, AZ 85022.

Comments must be received by June 12, 2024.

Thank you for your interest in your public lands.

Sincerely,

Leon Thomas  
District Manager

DRAFT

## Table of Contents

1	Executive Summary.....	6
2	Background and Authorities .....	7
3	Introduction to the Phoenix District Office Recreation Program .....	8
4	Description of Each Existing or Proposed Fee Site/Area .....	13
5	Proposed Modifications to Recreation Fee Rates.....	17
6	Operating Costs.....	18
7	Revenues .....	19
8	Priorities for Future Expenditures.....	19
9	Analysis of Recreation Fee Rates.....	20
10	Impacts from Changing and Non-Changing Recreation Fee Rates .....	22
11	Public Outreach .....	24
12	References.....	25

# 1 Executive Summary

This business plan was prepared by the Bureau of Land Management’s Phoenix District Office in accordance with the Federal Lands Recreation Enhancement Act of 2004 (FLREA) and BLM recreation program policy regarding the administration of fee sites. FLREA authorizes the BLM to establish, modify, charge, and collect recreation fees at Federal recreational lands and waters.

In Fiscal Years (FY) 2022-2023 the district opened four developed shooting sports sites on BLM land located near the Phoenix metropolitan area and are currently free to use. The areas have been popular with local recreation users leading to high visitation and extensive use. This business plan will include fee proposals at all the current sites deemed necessary due to high maintenance and monitoring costs along with the high costs associated with plans to construct and monitor four future shooting sports sites also in the local area. The BLM is authorized to collect Individual Special Recreation Permit (ISRP) fees for use at Special Areas which meets the requirements of FLREA. All four recreational shooting sports sites would be designated as Special Areas along with the area that the four proposed shooting facilities will be constructed on.

## Current Fee for Use at Any Site

**Free** to the public

## Proposed Fee for Use at Any Site

Day Permit: **\$10.00**

Monthly Permit: **\$25.00**

Annual Permit: **\$80.00**

Age 16 and under free accompanied by an adult permit holder

Compared to other similar shooting sports sites in the area these proposed fees align with local market prices. Other nearby sites range from \$7 per 1.5 hours to \$15 per day. The most developed facility charges over \$400 dollars a year for an annual pass. Projected revenue from the shooting sports sites will be used to offset site operation and maintenance expenses, enhance amenities on all current sites and help supplement construction costs of new sites. Projected annual revenue from the collective fully operational sites is estimated at \$1,057,000 with proposed fees and estimated visitation. Costs to operate all the sites is estimated to be around \$1,200,000 annually.



## 2 Background and Authorities

This business plan has been prepared to meet the criteria defined in the Federal Lands Recreation Enhancement Act of 2004 (Public Law 108-447; Title VIII, Section 801; 16 U.S.C. 6801–6814). The authorities and regulations for this business plan are:

- **The Federal Land Policy and Management Act (FLPMA) of 1976** (Public Law 94-579; 43 U.S.C. 1701–1787), contains BLM’s general land use management authority over the public lands, and establishes outdoor recreation as one of the principal uses of those lands. Section 302 (b) of FLPMA directs the Secretary of the Interior to regulate through permits or other instruments the use of the public lands. Section 303 of FLPMA contains BLM’s authority to enforce the regulations and impose penalties.
- **The Federal Lands Recreation Enhancement Act (FLREA) of 2004** repealed applicable portions of the Land and Water Conservation Fund Act and replaced BLM’s authority to collect recreation fees. This current law authorizes BLM to collect recreation fees at sites that meet certain requirements, allows BLM to keep the fee revenues at the local offices where they were collected, and directs how BLM will manage and utilize these revenues. FLREA also established the America the Beautiful – The National Parks and Federal Recreational Pass Program.
- **Title 43 Code of Federal Regulations, Part 2930 (43 CFR 2930) Permits for Recreation on Public Lands** contains the regulations governing BLM’s recreation permitting program.

This business plan has also been prepared pursuant to all applicable BLM recreation fee program policies and guidance, including:

- BLM Manual 2930, *Recreation Permits and Fees*, Rel. 2-296 dated October 22, 2007
- BLM Handbook 2930-1, *Recreation Permit and Fee Administration Handbook*, Rel. 2-300 dated November 17, 2014

The BLM strives to manage recreation and visitor services to serve the diverse visitor outdoor recreation demands while helping to maintain sustainable setting conditions needed to conserve the public lands, so the visitors’ desired recreation choices remain available. The BLM’s goals for delivering recreation benefits from BLM-administered lands and waters to the American people and their communities are to:

- Improve access to appropriate recreation opportunities,
- Ensure a quality experience and enjoyment of natural and cultural resources, and
- Provide for and receive fair value in recreation.

### 2.1 Special Area Permits and Fees

The BLM Phoenix District Office will undertake an environmental review, in compliance with the National Environmental Policy Act and all other applicable statutes, that would evaluate

establishing the Recreational Shooting Sports Sites as a “special area” with a fee-based permit system. *Recreational shooting sports site* means a developed recreation site or area meeting the definition found at 43 CFR 8360.0–5(c) and where the primary purpose is recreational shooting (86 FR 14009). BLM regulations and policy define a “special area” as: any area where the authorized officer determines that resources need to be protected by special management and control measures and that a permit system for individual use (i.e., private, non-commercial) would achieve management objectives (43 CFR §2932.5; BLM H-2930-1, Chapt.1, I.D.). If the decision is made to designate these shooting sports sites as a special area and that a permit system for individual use of the special area would achieve management objectives, implementation of the permit system would be published in the *Federal Register* (43 CFR §2932.13).

The FLREA authorizes the BLM to collect special recreation permit fees for specialized recreation uses of federal recreational lands. Under 43 CFR §2931.2, BLM may establish a Special Recreation Permit (SRP) and fee system for the use of special areas. SRPs for individual recreation use in a special area are referred to as “Individual Special Recreation Permits” (ISRPs) (BLM H-2930-1, Chapt.1, I.D.). ISRP fee rates are set by the BLM State Director based on several considerations in order to ensure a fair return for the use of public lands. These considerations include: management costs related to the special area, costs of operating the permit system, and comparison with fees charged in similar areas. Fees charged in a special area apply to all users of the area, including: private, non-commercial visitors; clients and guests of commercial permittees; and participants and spectators in a competitive event (BLM H-2930-1, Chapt.1, III.G.2.e.).

### 3 Introduction to the Phoenix District Office Recreation Program

District Office: BLM Phoenix District

Field Offices:

- **Hassayampa Field Office** - Baldy Mountain, Church Camp Road, Saddleback Mountain, and Table Mesa recreational shooting sites.
- **Lower Sonoran Field Office** – Box Canyon and Narramore recreational shooting sites.

Counties: Maricopa and Pinal

Congressional Districts:

- AZ-02 – Box Canyon Recreational Shooting Site
- AZ-08 – Baldy Mountain, Church Camp Road, Saddleback Mountain, and Table Mesa recreational shooting sites.
- AZ-09 – Narramore Road Recreational Shooting Site



Phoenix District Office (PDO) includes 3.1 million acres of land in Arizona divided into two field offices: Hassayampa Field Office with 1.7 million acres and Lower Sonoran Field Office with 1.4 million acres. The recreation programs on this land include Painted Rock Campground, an expanded amenity fee site campground with a standard amenity day-use archaeological site; a large network of multi-use trails from hiking and equestrian to OHV and mountain biking; dispersed camping; target shooting; a robust Special Recreation Permit program from off-road racing and tours to endurance running and riding, competitive events and research trips. Features encompassed in the PDO include the Harquahala Mountains Backcountry Byway, Big Horn Mountains, 11 Wilderness areas, Table Mesa Recreation Area, the Black Canyon National Recreation Trail, Juan Bautista de Anza and Butterfield Overland National Historic Trails.

The Phoenix District Office manages two national monuments, Agua Fria National Monument and Sonoran Desert National Monument. Nearby public lands that border the district include Tonto and Prescott National Forests, Maricopa County Parks and Arizona State Trust lands.

### 3.1 District Recreational Visitation

According to the BLM’s Recreation Management Information System (RMIS) database, Hassayampa Field Office’s overall visitation shows a consistent year to year increases with a total increase of 51 percent from 2019 to 2023.

*Table 1: Estimated Number of Visitors to Hassayampa Field Office, Fiscal Years 2019-2023*

Fiscal Year	Hassayampa Field Office Estimated Number of Visitors
FY2019	473,851
FY2020	524,457
FY2021	600,788
FY2022	656,400
FY2023	714,824

From the five-year RMIS data of the Lower Sonoran Field Office’s overall visitation, we see a noticeable decrease from FY2019 to FY2020 most likely tied to COVID 19 after which a steady yearly increase brings the visitation numbers even higher (7.3 percent) in FY2023 compared to the pre-COVID FY2019 year.

*Table 2: Estimated Number of Visitors to Lower Sonoran Field Office, Fiscal Years 2019-2023*

Fiscal Year	Lower Sonoran Field Office Estimated Number of Visitors
FY2019	115,988
FY2020	107,598
FY2021	104,353
FY2022	110,806
FY2023	124,458

### 3.2 Demographics of Recreational Users

Site use demographics information will be collected for the sites in the future. Nearby relevant data from the Tonto National Forest has been used. Tables collected from the Forest Service data show which activities are popular with recreational users there, annual household visitor income and the locations of visitor and user origins. The Forest Service derived this information from surveys of visitors leaving the Tonto National Forest on random locations and days over a period of one year. For more details on the methodology, please refer to [Review of the Forest Service’s National Visitor Use Monitoring \(NVUM\) Program \(2020\)](#).

All the following information and graphics for this section is taken from the National Visitor Use Monitoring data collected FY 2016 for the Tonto National Forest.

#### Activity Participation

Activity	% Participation*	% Main Activity‡	Avg Hours Doing Main Activity
Hiking / Walking	29.3	15.3	3.8
Viewing Wildlife	25.1	1.2	5.4
Relaxing	22.6	5.3	12.1
Viewing Natural Features	22.2	5.7	4.0
Fishing	17.9	11.8	6.7
Non-motorized Water	14.9	13.6	3.9
Some Other Activity	14.5	10.9	3.1
Motorized Water Activities	12.5	8.5	5.6
Other Non-motorized	11.1	6.7	3.1
Driving for Pleasure	10.5	3.3	2.1
Developed Camping	7.9	2.9	21.2
Picnicking	7.7	2.5	4.3
OHV Use	7.5	5.8	4.2
Nature Study	5.9	0.0	4.0
Primitive Camping	4.1	1.1	30.5
Motorized Trail Activity	3.5	1.2	4.0
Visiting Historic Sites	2.8	0.3	1.8
Bicycling	1.5	0.7	2.4
Hunting	1.5	1.5	4.3
Gathering Forest Products	0.7	0.2	2.4
Nature Center Activities	0.7	0.4	1.2
Backpacking	0.4	0.5	10.0

No Activity Reported	0.4	2.5	
Horseback Riding	0.3	0.2	1.1
Resort Use	0.3	0.1	46.7
Snowmobiling	0.2	0.1	26.8
Downhill Skiing	0.1	0.0	0.0
Other Motorized Activity	0.1	0.1	7.0
Cross-country Skiing	0.0	0.0	0.0

\* Survey respondents could select multiple activities so this column may total more than 100%.

‡ Survey respondents were asked to select just one of their activities as their main reason for the forest visit. Some respondents selected more than one, so this column may total more than 100%.

### Percent of National Forest Visits\* by Annual Household Income

Annual Household Income Category	National Forest Visits (%)
Under \$25,000	8.1
\$25,000 to \$49,999	17.2
\$50,000 to \$74,999	23.0
\$75,000 to \$99,999	15.6
\$100,000 to \$149,999	17.8
\$150,000 and up	18.2
Total	99.9

\* National Forest Visits are defined as the entry of one person upon a national forest to participate in recreation activities for an unspecified period of time. A National Forest Visit can be composed of multiple Site Visits.

### Top 15 Most Commonly Reported ZIP Codes, States and Counties of National Forest Survey Respondents

ZIP Code	State	County	Percent of Respondents	Survey Respondents (n)
85207	Arizona	Maricopa County	12.4	47
Unknown Origin*			9.2	35

85234	Arizona	Maricopa County	8.4	32
85208	Arizona	Maricopa County	7.9	30
85120	Arizona	Pinal County	7.6	29
85204	Arizona	Maricopa County	6.8	26
85205	Arizona	Maricopa County	6.1	23
85209	Arizona	Maricopa County	5.8	22
85118	Arizona	Pinal County	5.8	22
85206	Arizona	Maricopa County	5.8	22
85142	Arizona	Pinal County	5.5	21
85140	Arizona	Pinal County	4.7	18
85119	Arizona	Pinal County	4.7	18
85281	Arizona	Maricopa County	4.7	18
Foreign Country			4.5	17

\* Includes respondents reporting no ZIP code or an invalid ZIP code.

### Percent of National Forest Visits\* by Distance Traveled

Miles from Survey Respondent's Home to Interview Location†	National Forest Visits (%)
0 - 25 miles	42.4
26 - 50 miles	31.8
51 - 75 miles	9.1
76 - 100 miles	4.4
101 - 200 miles	5.5
201 - 500 miles	2.0
Over 500 miles	4.7

Total	99.9
-------	------

\* National Forest Visits are defined as the entry of one person upon a national forest to participate in recreation activities for an unspecified period of time. A National Forest Visit can be composed of multiple Site Visits. Travel distance is self-reported.

### 3.3 Resource Management Plans Phoenix District Hassayampa Field Office

Bradshaw-Harquahala Record of Decision & Approved Resource Management Plan

#### Lower Sonoran Field Office

Lower Sonoran Record of Decision & Approved Resource Management Plan

### 3.4 Partnerships and Volunteer Programs

A volunteer program through the BLM is in place to assist with on the ground management of the recreational shooting sports sites. To date, the program has 34 active volunteers totaling 2,500 volunteer hours with an estimated value of \$79,500. These volunteers are vital in providing on the ground presence, assist with keeping the facilities clean, and are ambassadors for safe recreational target shooting.

Individuals who complete the required volunteer training and volunteer a minimum of 12 hours per month are eligible to receive a free monthly permit.

## 4 Description of Each Existing or Proposed Fee Site/Area

### 4.1 Existing Recreational Shooting Sports Sites

**Church Camp** is a developed recreational shooting sports site. It includes amenities such as a gravel parking area, two concrete shooting platforms, metal shade structures, a vault toilet, and developed backstops. The focused recreational shooting sports activity at this site is rifle and pistol shooting. This approximately 744-acre developed recreation area is located approximately 0.4 miles north of State Route 74. The facility area is approximately 16.3 acres. FY2023 had 47,811 individual recreational visits.

**Box Canyon** is a developed recreational shooting sports site. The site includes long range rifle, shotgun, and pistol bays, with amenities such as delineated parking, concrete shooting platforms and vault toilets. This approximately 1,072-acre developed recreation area is located approximately 0.1 miles west of North Hidden Valley Road, which is paved. The facility area is approximately 68.4 acres. FY2023 had 15,089 individual recreational visits.

**Saddleback Mountain** is a developed recreational shooting sports site. It includes amenities such as a gravel parking area, gravel shooting platform, and long-distance fixed steel targets with developed backstops. The focused recreational shooting sports activity at this site is

long-range rifle shooting. This approximately 689-acre developed recreation area is located approximately 0.8 miles south of State Route 74. The site has a facility area of approximately 18.4 acres. FY2023 had 16,330 individual recreational visits.

**Baldy Mountain** is a developed recreational shooting sports site. It includes amenities such as a gravel parking area, gravel shooting platform, and long-distance fixed steel targets with developed backstops. The focused recreational shooting sports activity at this site is long-range rifle shooting. This approximately 1,440-acre developed recreation area is located approximately 2.4 miles north of State Route 74 and 2.5 miles west of Lake Pleasant via Castle Hot Springs Road, both of which are paved. The site has facility area which is approximately 13.5 acres. FY2023 had 5,021 individual recreational visits.



*Figure 1: Facilities at Church Camp*



*Figure 2: Box Canyon Range*





*Figure 3: Targets at Saddleback Mountain*

## **4.2 Planned Recreational Shooting Sports Sites - Not Yet Built**

**Narramore Road Recreation Area** - This approximately 162-acre developed recreation area would be located northeast of West Narramore Road which is paved, approximately 0.6 miles west of South 339th Avenue, and 1.2 miles east of South 355th Avenue. It will include amenities such as a gravel parking area, two concrete shooting platforms, metal shade structures, a vault toilet, and developed backstops. The focused recreational shooting sports activity at this site is rifle, pistol, and shotgun shooting. The facility area is approximately 21.1 acres.

**Table Mesa Developed Shooting Facilities** - The area is located north of New River, south of Black Canyon City, and west of Interstate 17.

**Table Mesa Shooting Sport Facility** - The facility would be located on the south side of Table Mesa Road, on both sides of the Old Mine Road (9954). It will include amenities such as a gravel parking area, concrete shooting platforms, metal shade structures, a vault toilet, and developed backstops. The focused recreational shooting sports activity at this site is rifle, pistol, and shotgun shooting. The facility area would be approximately 24.34 acres. FY2023 had 88,678 individual recreational visits in the whole Table Mesa Area.

**Table Mesa Southwest Shooting Sport Facility** - This facility would be located approximately a mile west of the Table Mesa facility, south of Table Mesa Road along route 9953. It will include amenities such as a gravel parking area, concrete shooting platforms, metal shade structures, a vault toilet, and developed backstops. The focused recreational shooting sports activity at this site is pistol only. The facility would be approximately 2.04 acres.

**Table Mesa Pipeline Range** - This facility will be located between Little Pan Road and the gas line road on route 9993 and be limited to compressed gas or spring fired guns and archery equipment. The facility would be approximately 3.46 acres.

Hassayampa Field Office Shooting Sport Site Locations

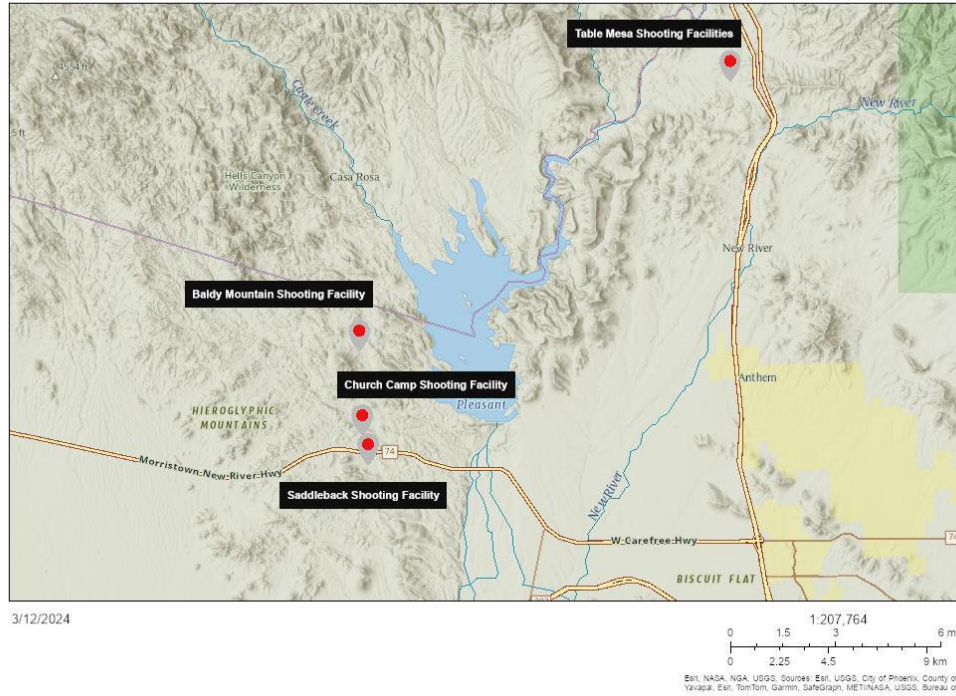


Figure 4: Map Showing Location of Hassayampa Field Office Recreational Shooting Sports Sites

Lower Sonoran Field Office Shooting Sport Site Locations

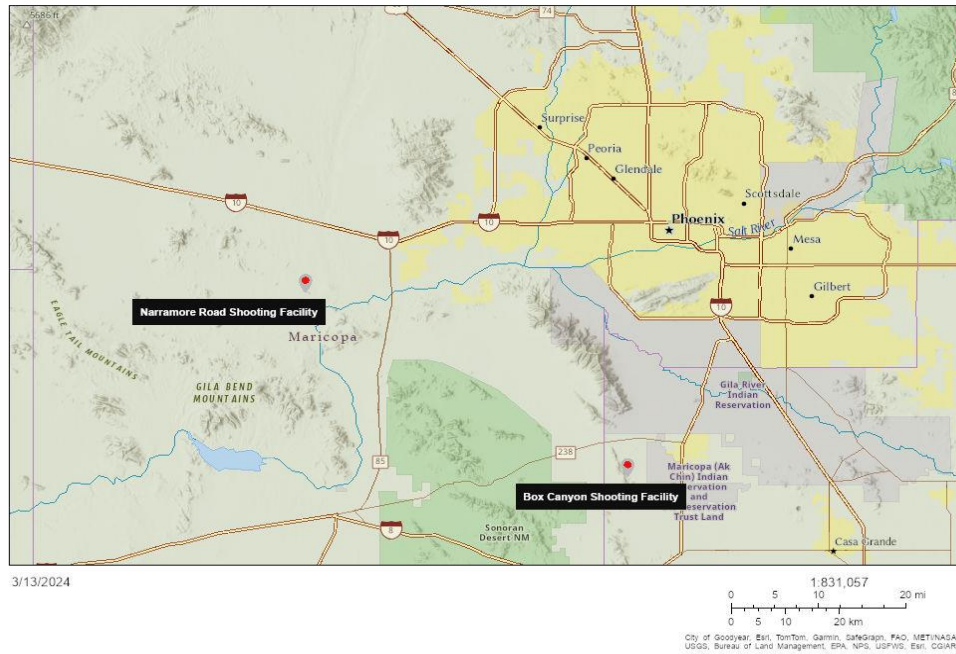


Figure 5: Map Showing Location of Lower Sonoran Field Office Recreational Shooting Sports Sites

## 5 Proposed Modifications to Recreation Fee Rates

There is currently no fee for recreational use of the BLM shooting sports sites. The proposed rate would be \$10 for an individual day permit, \$25 for an individual monthly permit, and \$80 for an individual annual permit. An ISRP is free for those age 16 and under and accompanied by an adult permit holder.

Phoenix District Office will use various e-commerce technologies as directed in BLM Instruction Memorandum 2022-010, to provide recreation visitors opportunities to research and pay for the different types of available permits. Most of these options are provided through the interagency reservation service Recreation.gov. If the Phoenix District Office decides to add additional payment services or other types of e-commerce options available in the future, an expanded amenity fee for payment services would be charged in addition to any other individual special recreation permit fees, and standard or expanded amenity fees in accordance with the provisions of FLREA found at 16 U.S.C. 6802(g)(2)(G).

Payment service fees could range from \$0.50 to \$10.00 depending on the type of service provided. The payment service is subject to contracting requirements and will be adjusted with contract changes or with future updates to the business plan. Other payment options may also be considered in the future as technology and software develops, such as onsite credit card payment systems or scan and pay.

### 5.1 Model for Establishing Future Fee Changes

BLM's permit and fee policy recommends the use of an index for routine fee adjustments rather than reviewing each individual adjustment through a comprehensive business plan effort that requires a tremendous investment of effort and time.

The Phoenix District Office seeks approval to adopt a model to increase fees by 20% (then rounded) whenever the CPI-U, US City Average, All Items, 1982-84=100, not seasonally adjusted, annual average rises by 20%. According to the BLS, the Consumer Price Index or CPI is "a measure of the average change over time in the price paid by urban consumers for a market basket of consumer goods and services" ([bls.gov/cpi](https://www.bls.gov/cpi)). The CPI-U is the broadest and most comprehensive CPI. The all urban consumer group included in the CPI-U represents over 90 percent of the total U.S. population (<https://www.bls.gov/cpi/questions-and-answers.htm>).

The BLM is seeking approval to exercise the option to increase each fee by 20%, rounded up to the nearest half dollar, when there is a 20% increase in the CPI-U from the date this business plan is approved. The first adjustment would result in an increase for: Day Use permit by \$2.00, Monthly permit by \$5.00, and the Annual permit by \$16.00. This model would ensure the Phoenix District Office Shooting Sports Sites fees evolve in tandem with the ever-changing environment of the future and increasing costs.

## 6 Operating Costs

### Annual Operating Costs for each Church Camp, Box Canyon, Narramore Road, and Table Mesa Shooting Sport Facility Developed Sites

Operating and Maintenance Expenses	Annual Costs
Commercial Trash Pickup (dumpster)	\$8,000.00
Target Repair/Replacement	\$40,000.00*
Restroom Cleaning/Pumping	\$15,000.00
BLM Law Enforcement (LE) Patrols	\$50,000.00
Non-LE Staff Patrols	\$30,000.00
Maintenance Staff	\$30,000.00
Accounting and Administration	\$8,000.00
Dirt work (parking lot, berm, backstop repair)	\$15,000.00
Equipment Rental	\$10,000.00
Misc repairs (gates, fence, signage)	\$8,000.00
Vehicle expenses (fuel, maintenance, etc.)	\$5,000.00
Subtotal of annual expenses per site	\$219,000.00
Total annual expenses for these sites	\$876,000.00

\* Material and labor cost to cut and replace all AR500 steel targets and components once per quarter.

### Annual Operating Costs for each Saddleback Mountain, Baldy Mountain, Table Mesa Southwest, and Table Mesa Pipeline Developed Sites

Operating and Maintenance Expenses	Annual Costs
Target Repair/Replacement	\$5,000.00
BLM Law Enforcement (LE) Patrols	\$20,000.00
Non-LE Staff Patrols	\$15,000.00
Maintenance Staff	\$10,000.00
Accounting and Administration	\$8,000.00
Dirt work (parking lot, berm, backstop repair)	\$5,000.00
Equipment Rental	\$5,000.00
Misc repairs (gates, fence, signage)	\$8,000.00
Vehicle expenses (fuel, maintenance, etc.)	\$5,000.00
Subtotal of annual expenses per site	\$81,000.00
Total annual expenses for these sites	\$324,000.00

Annual operating cost of all Phoenix District Shooting Sport facilities is estimated at \$1.2 million/year.

It is estimated that an additional \$1 million/year be set aside for lead remediation.



## 7 Revenues

Pass Type	Price	Estimated # Sold	Total
Day Permit	\$10.00	15,000	\$150,000
1 Month Permit	\$25.00	3,500	\$87,500
Annual Individual Permit	\$80.00	10,250	\$820,000

Total estimated annual revenue \$1,057,000

Estimated number of permits sold is based on past visitation at the currently built facilities and staff/volunteer observations.

## 8 Priorities for Future Expenditures

### Future Expenditures

### Cost Estimates

Lead Remediation - Long-Term Ongoing	\$4,000,000 (estimated to be done every four years)
Fee Collection Adoption - Short-Term	\$10,000
Shade Structures - Short-Term	\$150,000
Shooting Benches - Short-Term	\$75,000
Architectural Barriers Act (ABA)* Compliant Paths and Shooting Pads - Short-Term	\$250,000
Access Road Enhancement - Short-Term	\$75,000
Site Host Spot at Church Camp - Short-Term	\$250,000

Lead remediation will be an ongoing expenditure averaging out to \$1,000,000 dollars a year for all eight sites. Shade structures and shooting benches will be constructed at the more developed shooting sports sites (Church Camp, Box Canyon, Narramore Road, Table Mesa Shooting Sports Facility); concrete shooting pad, improved paths and shooting benches could be added to improve some sections at Saddleback Mountain, Baldy Mountain, Table Mesa Southwest, and Table Mesa Pipeline sites. With increased visitation all access roads to the sites would need to be improved with the creation of turning lanes and better developed road conditions. The district will set a goal of \$1,000,000 a year in savings mainly for costs associated with lead remediation. Appropriated funding will be estimated at around 40 percent and that would contribute towards the priority expenditures.

\*Architectural Barriers Act is the law that requires that buildings or facilities that were designed, built, or altered with federal dollars or leased by federal agencies after August 12, 1968, be accessible. The ABA has similar accessibility regulations to the Americans with Disabilities Act (ADA), and it covers federal government facilities which the ADA doesn't apply to.

## 9 Analysis of Recreation Fee Rates

Fair Market Value Fee Calculation Method:

Name of Site/Area	Agency or Operator	Fee(s)	Amenities Offered	Key Differences
<p><b>PDO Shooting Sports Sites</b></p> <p><b>Proposed Fees</b></p>	BLM	<p><b>Currently Free</b></p> <p><b>Proposed Fees</b></p> <p><b>Day Permit: \$10</b></p> <p><b>Monthly Permit: \$25</b></p> <p><b>Annual Permit: \$80</b></p> <p><b>Age 16 and under free accompanied by an adult permit holder</b></p>	<p>All sites have designated developed parking and controlled access in addition to the amenities listed below.</p> <p><b>Church Camp:</b> vault toilets, shade structures, shooting tables, pistol range, rifle range, concrete pad</p> <p><b>Box Canyon:</b> vault toilets, shooting tables, pistol range, rifle range, sporting clay/skeet shooting area, concrete pad</p> <p><b>Narramore:</b> vault toilets, shooting tables, pistol range, rifle range, shotgun shooting area, concrete pad</p> <p><b>Table Mesa:</b> vault toilets, shooting tables, pistol range, rifle range, shotgun shooting area, concrete pad, archery range, air rifle range, individual lanes</p> <p><b>Baldy Mountain:</b> long range targets</p> <p><b>Saddleback:</b> long range targets</p>	No water or power at any BLM sites.
Phoenix Rod & Gun Club Public Range	Private	\$15 Range fee (cash only) is assessed for each shooter for the entire day	Bathrooms, picnic area, pistol range, clay throwers, long range targets	Only open to the public on Saturdays



		Kids under 18 shoot for free when accompanied by an adult		and Sundays
Ben Avery Shooting Facility (BASF)	State of Arizona	\$12 per adult 18+ 1.5 hours for the steel target range \$7 per adult 18+ for 1.5 hours for main range \$10 per adult for 300-yard range Children 5-17 shoot free with a paying adult	Bathrooms, benches, ramadas, shooting tables, picnic tables, potable water on site, electricity, short range and long-range targets	
Cowtown Range	Private	\$419.99/year or 6 Month contract \$39.99/month  Pay as you go membership \$49.99/year at a cost of \$14.99/hour	Bathrooms, benches, tactical ranges, ramadas, potable water, electricity	
Joe Foss Shooting Complex	Maricopa County Parks & Recreation: non-profit manages facilities under Special Use Permit	Daily Public Fees \$7 per day per adult \$5 for active military and law enforcement  (Credit/debit cards are only accepted form of payment)	Bathrooms, 200-yard rifle range and pistol range, trap and skeet field, shade structures, concrete pads	Only open Saturday and Sunday; lands are part of Recreation and Public Purposes Act patent from BLM

## 9.1 Similarities and Differences Between Sites

All the BLM shooting sports sites have varying levels of amenities. Similarities between these and other sites nearby include designated developed parking, controlled access, rifle

opportunities and clearly designated firing lines at all sites. The most developed of BLM’s sites offer similar amenities such as toilets, concrete pads, shooting benches and pistol ranges.

The main differences in BLM sites to similar local sites is lack of electricity and water. BLM sites are located further away from the local metro area and nearby more rural areas. Two of the comparable sites are only open to the public on Saturdays and Sundays.

## 9.2 Cost Recovery Method

Full cost recovery to operate all eight shooting sport facilities would require a fee of \$25/day, \$44/month permit, \$163/annual permit.

Pass Type	Price	Estimated # Sold	Total
Day Permit	\$25	15,000	\$375,000
1 Month Permit	\$44	3,500	\$154,000
Annual Permit	\$163	10,250	\$1,670,750
<b>Total</b>			<b>\$2,199,750</b>

## 10 Impacts from Changing and Non-Changing Recreation Fee Rates

Consistent with the Department of the Interior and BLM priorities, the BLM Phoenix District Office seeks to achieve environmental justice, equity, diversity, inclusion, and accessibility and make a difference in local Phoenix-area communities through expanding recreational access and opportunities and providing for natural resource interpretation. This includes to:

- encourage, facilitate, and improve partnership with and access for youth, tribes, and underserved communities to public lands through recreation partnerships and collaborations;
- improve public health and safety at developed recreation sites and areas by updating and modernizing infrastructure—including meeting accessibility standards for people with disabilities;
- invite education, interpretation, and recreational access for all Americans, especially for diverse populations and those near urban areas to encourage enjoyment of BLM-managed public lands and waters;
- collaborate with community members, government organizations, nonprofit organizations, academic institutions, and other stakeholders to address environmental and health-related challenges for recreation management;
- enhance understanding of environmental and health-related issues at the community level;
- improve methods for identifying, addressing, tracking, and measuring progress toward achieving environmental justice;
- and develop and support youth education and outreach programs.

The following tables were created using census data of local communities and the three counties that encompass the shooting sports sites on the Phoenix District. Both tables are being used to display environmental justice considerations in the demographics of local residents including income and race.

### 10.1 Reference Area: Environmental Justice Considerations

Reference area	Maricopa County	Yavapai County	Pinal County	Arizona	United States
Total population in 2021	4,367,186	233,789	420,625	7,079,203	329,725,481
Median household incomes (\$) in 2021	72,944	56,170	65,488	65,913	69,021
Low-income population in 2021	28.6%	32.0%	31.3%	31.7%	29.2%
Minority population in 2021	46.2%	20.6%	44.6%	46.6%	40.6%

Data source: compiled based on U.S. Census Bureau, 2023, 2017-2021 American Community Survey 5-Year Estimates.

### 10.2 Analysis Area: Environmental Justice Considerations

Analysis area	Phoenix city	Peoria city	Black Canyon City CDP	New River CDP	Maricopa city	Gila Bend town
Reference area	Maricopa County	Maricopa County	Yavapai County	Maricopa County	Pinal County	Maricopa County
Total population in 2021	1,591,119	187,733	2,485	17,731	57,075	1,743
Median household incomes (\$) in 2021	64,927	81,017	63,843	110,257	82,388	42,022
Low-income population in 2021	35.5%	21.2%	46.7%	8.5%	23.8%	50.8%
Minority population in 2021	58.6%	34.0%	11.7%	12.3%	53.4%	77.5%
EJ community criterion 1: minority population higher than 50%	YES	NO	NO	NO	YES	YES
EJ community criterion 2: minority population higher than 110% of reference area	YES	NO	NO	NO	YES	YES

EJ community criterion 3: low-income population higher than 50%	NO	NO	NO	NO	NO	YES
EJ community criterion 4: low-income population higher than 100% of reference area	YES	NO	YES	NO	NO	YES
EJ community criterion 5: tribal community	NO	NO	NO	NO	NO	NO
EJ community (overall)	YES	NO	YES	NO	YES	YES

Note: "n/a" indicates that the data point is not available.

Data source: compiled based on U.S. Census Bureau, 2023, 2017-2021 American Community Survey 5-Year Estimates.

### 10.3 Anticipated Results of Not Establishing New Fees

By not establishing fees at the recreational shooting sports sites, the district would not be able to provide high-quality service for recreation users from the local area. The district would not be able to enhance facilities and facilitate the recreation experiences and benefits visitors are seeking. By not establishing fees, the BLM may be creating a disadvantage to the private sector in supplying similar services and resources without charging a fee. Not being able to remediate the soil and contain lead expenditure would have a negative impact on the local environment. Lower-income recreation users of the sites would be more likely to visit our shooting sports site if no fees are established. If fees are established, they likely instead would move on to the dispersed areas that do not have a fee. The implementation of the business plan would have minimal impact on underserved communities because they are not a large percentage of the main user group and the small amount affected would have other options to recreate on BLM lands.

## 11 Public Outreach

Outreach methods include:

- Signs posted at sites
- News releases
- Public notices in local newspapers
- Social media, postings on recreation.gov and blm.gov
- Federal Register notice
- Recreation RAC review

- Visitor comment cards
- Posting in local gun shops
- Outreach to local shooting sports clubs
- Outreach to local municipalities and state agencies

These outreach methods comply with requirements established by FLREA and BLM policy.

Outreach method considered but not added include:

- Onsite suggestion box

## 12 References

U.S. Bureau of Labor Statistics (BLS), 2023, Consumer Price Index Retroactive Series (R-CPI-U-RS), U.S. City Average, All Items, <https://www.bls.gov/cpi/research-series/r-cpi-u-rs-home.htm>

U.S. Census Bureau (USCB), 2023a, 2018-2022 American Community Survey 5-Year Estimates and 2012-2016 American Community Survey 5-Year Estimates, <https://data.census.gov/cedsci/table>

U.S. Census Bureau (USCB), 2023b, Cartographic Boundary Files, Year of 2022, Scale of 1:500,000 <https://www.census.gov/geographies/mapping-files/time-series/geo/cartographic-boundary.html>

USDA Forest Service (USFS), 2016, Region 3 Tonto National Forest National Visitor Use Monitoring, <https://www.resolutionmineeis.us/documents/usfs-visitor-use-monitoring-2016>