

# Wildflowers of Grand Staircase-Escalante

Marc Coles-Ritchie

BLM Ecologist and Science Coordinator at Grand  
Staircase-Escalante National Monument

Kanab Public Library Presentation April 2024



# Objectives

---

Foster appreciation for wildflowers

---

Teach a bit

---

Inspire more learning

---

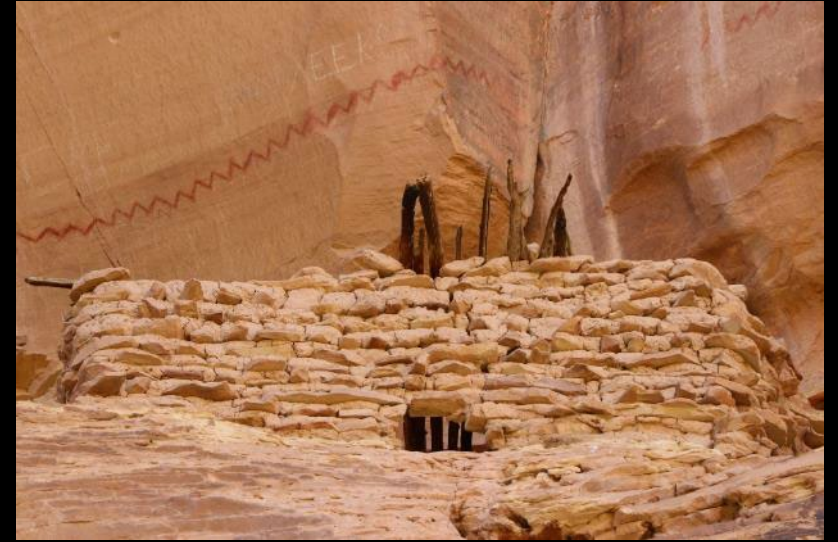
Share tools





# Recognizing Indigenous People and Knowledge

- Tribes with connection to this land include Southern Paiute, Hopi, Zuni, Pueblo, Dine' (Navajo), Ute and others.
- Indigenous people lived off this land.
- Indigenous knowledge holders knew and know the plants to use for food, medicine, construction, ceremony and other important uses.



# Flora of Grand Staircase-Escalante National Monument

---

- 1,003 species
- 26% of plants of Utah are in GSENM
- At least 43 endemic plants (grow nowhere else)





# Tips

- Be patient; learning plants takes time
- Look for patterns
- Look closely
- Go on walks in nature
- Take photos (close and far)
- Use apps, books, internet, etc.
- Respect Indigenous knowledge
- Don't assume something is edible; be certain





# Trees

Future presentation...



**Cottonwood**



**Ponderosa pine**

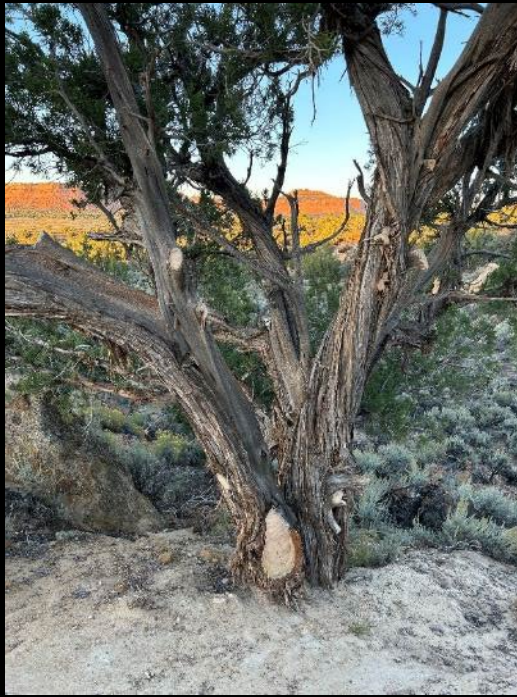


**Pinyon & Juniper (PJ)**





# Old Trees



537 growth rings



623 growth rings



322 growth rings



# Counting Tree Rings



726 years old



# Shrubs

Future presentation...



Oaks



Sumac



Currant



Sagebrush species



Winterfat



# Cactus, future presentation...



Smallflower fishhook cactus (*Sclerocactus parviflorus*)



Scarlet hedgehog cactus (*Echinocereus coccineus*)



Whipple cholla (*Cylindropuntia whipplei*)



Pricklypear (*Opuntia*)



# Grasses

future presentation...





Wildflowers, the stars of the show!

Now in bloom...

photos taken in recent days and weeks



# more Cryptantha



James' cryptantha (*Cryptantha cinerea*)





# Desert phlox (*Phlox austromontana*)





# Snowball sand verbena (*Abronia fragrans*)





# Desert trumpet (*Eriogonum inflatum*)





# Twinpods (*Physaria*)





# Sanddune wallflower (*Erysimum capitatum*)





# Brenda's yellow cryptantha (*Cryptantha flava*)





# Prince's plume (*Stanleya pinnata*)





# Prince's plume (*Stanleya pinnata*)





# Spring parsley (*Cymopterus*)



widewing springparsley (*Cymopterus purpurascens*)



Fendler's springparsley (*Cymopterus acaulis* var. *fendleri*)



# Utah bird's-foot trefoil (*Lotus utahensis*)





# Pea family (Fabaceae)

## Milkvetch (*Astragalus*) and related plants





# Penstemon or beardtongue



Utah Penstemon (*Penstemon utahensis*)



Fleshy beardtongue (*Penstemon carnosus*)





May not be flowering yet





**Morning glory heliotrope (*Heliotropium convolvulaceum*)**





**Hoary Townsend daisy (*Townsendia incana*)**





**Alcove Columbine (*Aquilegia micrantha*)**



# Evening Primrose (*Oenothera*)



Tufted evening primrose (*Oenothera caespitosa*)



Pale evening primrose (*Oenothera pallida*)



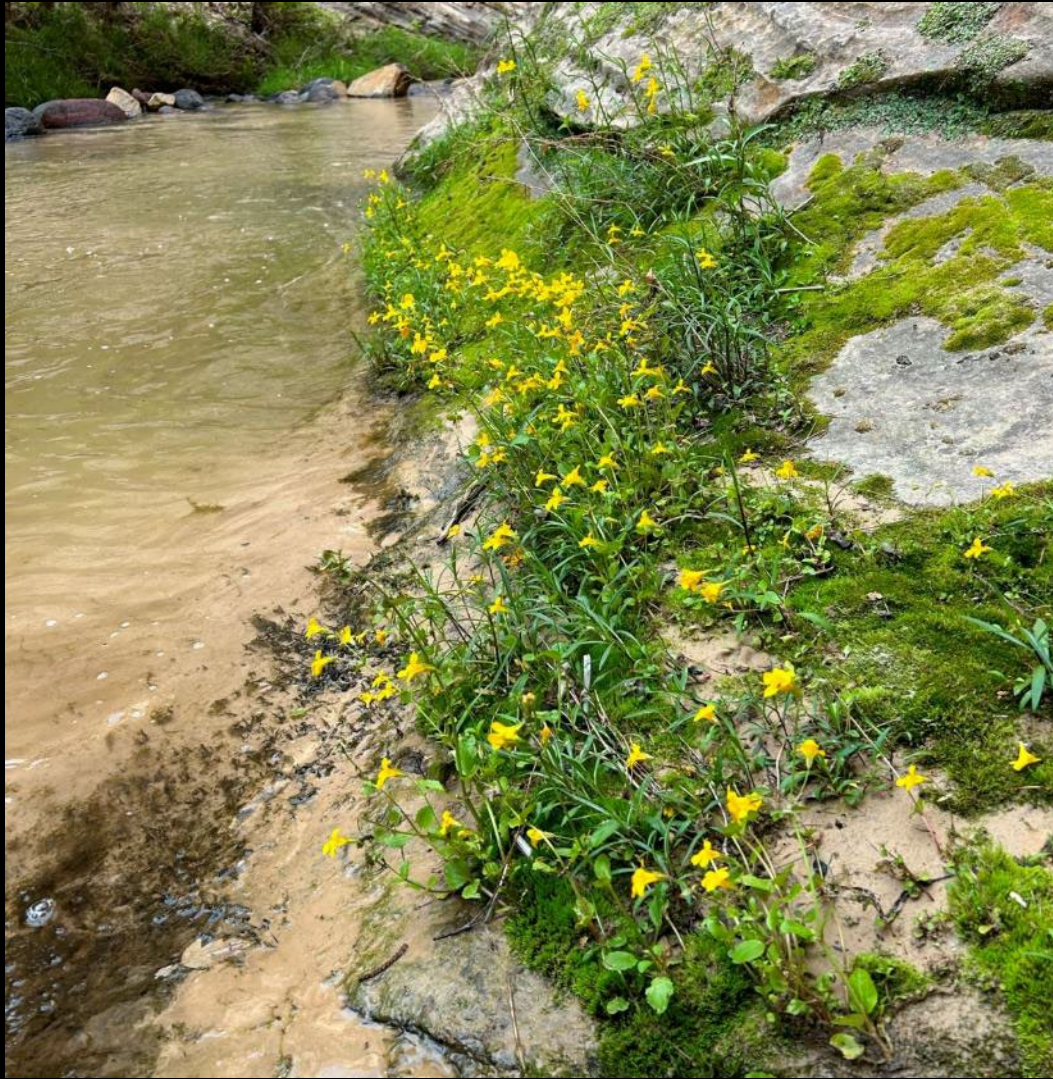
Longstem evening primrose (*Oenothera longissima*)





Stemless Four-nerved Daisy (*Tetraneuris acaulis*)





Yellow monkeyflower (*Mimulus guttatus*)



# Milkweed (*Asclepias*)



Showy milkweed (*Asclepias speciosa*)



Big-seed milkweed (*Asclepias macrosperma*)



# Sego lilies (*Calochortus*)

Winding mariposa lily (*Calochortus flexuosus*)

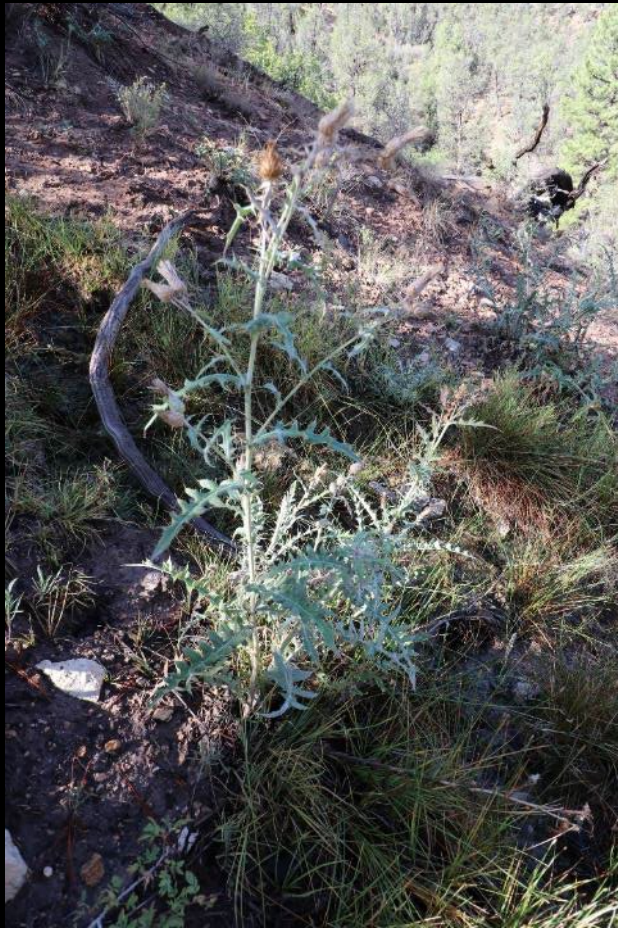


Golden mariposa lily (*Calochortus aureus*)



Nuttall's sego lily (*Calochortus nuttallii*)





**Native: Cainville thistle (*Cirsium calcareum*)**



**Non-Native: Bull thistle (*Cirsium vulgare*)**

---

Thistles (*Cirsium*): multiple species; some native; some noxious; don't kill any thistle please





Prairie spiderwort  
(*Tradescantia occidentalis*)







**Stream orchid (*Epipactis gigantea*)**





**Sand dock (*Rumex hymenosepalus*)**





Globemallow (*Sphaeralcea*)





**Wyoming paintbrush (*Castilleja linariifolia*)**



# Rare Plants

## Threatened and Endangered

- Welsh's milkweed (*Asclepias welshii*); sand dunes
- Jones's cycladenia (*Cycladenia humilis* var. *jonesii*); steep barren slopes
- Kodachrome Bladderpod (*Physaria tumulosa*); Carmel formation
- Ute Ladies' Tresses (*Spiranthes diluvialis*); wetlands
- Siler Pincushion Cactus (*Pediocactus sileri*); barren gypsic soils
- Navajo sedge (*Carex specuicola*); springs

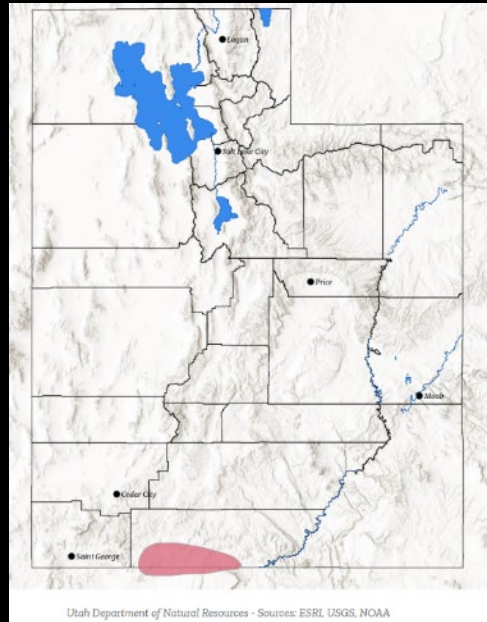


# Welsh's milkweed (*Asclepias welshii*)

Flyer at Peekaboo Road next to buck-and-rail fence.



Distribution in southern Utah and northern Arizona



Known locations:

- Coral Pink Sand Dunes
- Road to Peekaboo



Rare Plant:  
Welsh's milkweed



Photos by BLM Staff

Welsh's milkweed (*Asclepias welshii*) is a threatened plant (listed under the Endangered Species Act). This species is restricted to active sand dunes derived from Navajo Sandstone in sagebrush, juniper and Ponderosa pine communities between 5,000 and 6,230 feet in elevation. It is endemic to Kane County, UT, and Coconino, Navajo & Apache counties, AZ. The limited habitat and range of this plant make it vulnerable to extinction.

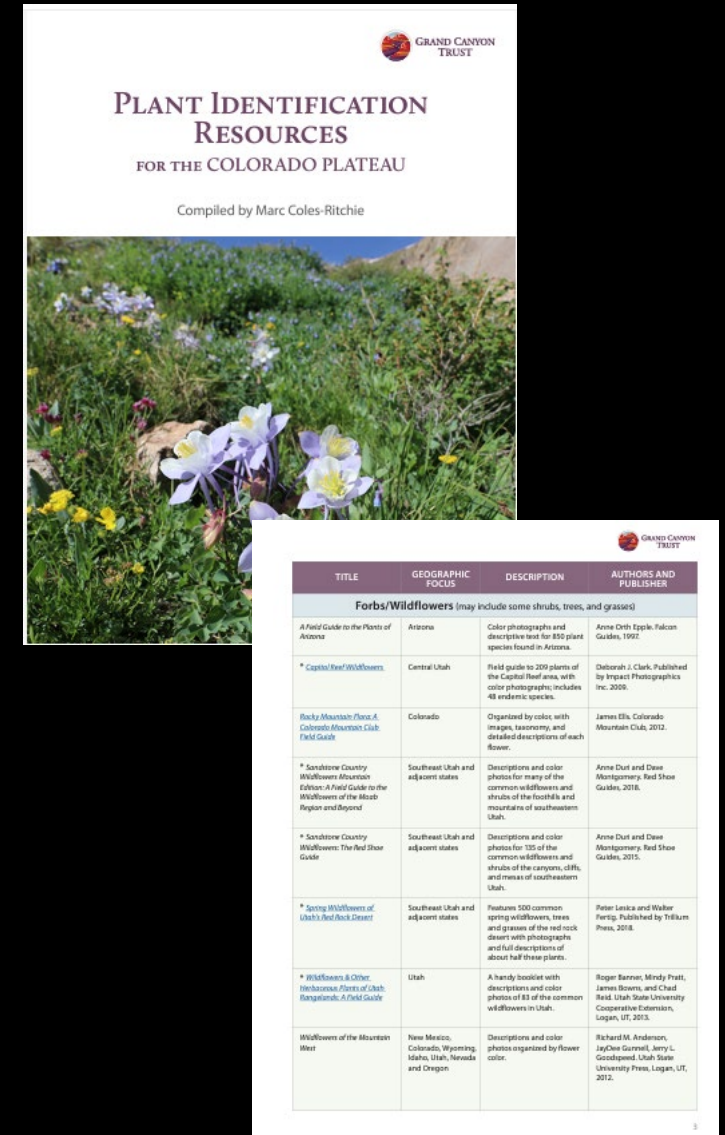
Please stay on the existing roads. Don't drive off the road, if you do you may damage or destroy this rare plant. In the winter and early spring, it won't have above-ground stems, but it does have living below-ground roots and rhizomes that could be damaged if you drive on the sand.





# Plant Identification Tools

- iNaturalist – post and others will identify (try live demo)
- List of books, apps and websites:  
<https://www.grandcanyontrust.org/plant-identification-resources>
- Send me photos





# Engagement with Grand Staircase Landscape

- GSENM Citizen Science website:  
<https://www.blm.gov/working-us> -
- GSENM Science & Research website:  
<https://www.blm.gov/programs/national-conservation-lands/utah/grand-staircase-escalante-national-monument/science-research> -





# Upcoming Events

- Amazing Earthfest, plant events
  - Scotch thistle removal: May 9 morning (me)
  - Growing native plants (Orderville): May 9 at 12:30pm
  - Botany walk at Tilted Mesa: May 10 at 8am (me)
  - Growing Native plants (Kanab): May 10, at 10:30am
- My future talks on shrubs, trees, cactus, grasses, and perhaps landscaping with native plants





These plant photos are in Flickr album  
called “[Plants of Grand Staircase-  
Escalante National Monument](#)”

within [Marc Coles-Ritchie Flickr  
collections](#)

