

Landscaping with Native Plants in Southern Utah

Marc Coles-Ritchie, BLM Ecologist

Tim Clarke, Landscape Designer

Kanab Public Library, April 2025



Recognizing Indigenous People and knowledge of nature

- Tribes with connection to this land include Paiute, Hopi, Zuni, Pueblo, Dine' (Navajo), Ute and others.
- Indigenous people lived off this land!



NOT covered in this presentation

- Lawns
- Vegetable gardens
- Fruit trees
- 'Zero-scaping' (gravel, concrete) ... but YES to 'Xeriscaping'
- Drip irrigation
- Surface water drainage
- Heavy equipment

What is a native plant landscape?

- Not only one approach a gradient of options:
‘Ecological’ using locally-native species ... to ... ‘Naturalistic’ with introduced species suited to local conditions
- Utilize the benefits of native plants:
 - Locally-adapted
 - Waterwise
 - Biodiverse (plants and wildlife)
 - Low maintenance
 - Sustainability
 - Low carbon footprint



‘Ecological’ - natural, wild, native species diversity



Natural Area (not altered)





Natural Recovery after
construction 2023 to 2024



‘Naturalistic’ - a stylized vision of nature



Key principles

- Minimize soil disturbance
 - Disturbed soil promotes dormant and windblown seed growth
- Promote native plant diversity
 - Keep existing & volunteer native plants
 - Remove weeds
 - Add appropriate plants
- Learn botany
- Establish structural diversity: tall, short, etc.
- Work with nature, not against it
- Be patient ... it takes time ... landscapes evolve season by season

What plants to use

Get to know plant requirements and characteristics:

- Soils (sand, loam, clay)
- Climate (USDA Zone, rainfall)
- Microclimate variation
- Water requirements (xeric / riparian)
- Exposure (sun / part-sun/ part-shade/ shade)
- Growth form (tree, shrub, perennial, cactus, grass)
- 'Architectural' form (groundcover, fountain, globe, columnar, etc)
- Height x spread (mature size)
- Color (flower, leaves, seedheads)
- Seasonal variations (winter especially)

☐ In Stock Only

Please [Sign In](#) or [create an account](#) to view pricing.

Name: **Apache Plume** X

[< Prev](#) [Next >](#)


Fallugia paradoxa

Apache Plume

The plant blooms with single white flowers that set fluffy pink seed heads. Pink, silky plumed seed heads cover the tips of the branches for many months.

USDA Zone: 4
 Height: 4'
 Spread: 4'
 Growth Rate: Moderate
 Exposure: Full Sun to Part Shade (3 to 6+ hours Sun)
 Water Use Once Established: Low
 Flower Color: Pink shades
 Foliage Color: Green

[Shrubs](#), [Native](#), [Waterwise](#), [Deer Resistant](#), [Summer Blooming](#),
[Low Maintenance](#), [Utah Lake Secondary Water Systems](#), [Red Butte Garden](#),
[Conservation Garden Park](#), [Rock Mulch Tolerant](#), [Plant Select](#)

Size
[Learn About Sizes](#)

Price Available (Approx.) Order

#5
 Location(s)

\$39.99

52 [Want more?](#)

0 

Plant schedule

TROPIC MAIN ST.		SIZE		FLOWER COLOR	FLOWERING SEASON	FRUITS / SEED	FALL COLOR	YEAR-ROUND	SEMI-EVGRN.	EVERGREEN	SUN	SHADE	GROWTH RATE	WATERING (PER MONTH)	COMPANION PLANTS	NOTES
PROPER NAME	COMMON NAME	HEIGHT	SPREAD													
TREES:																
ACER TARTARICUM	TARTARIAN MAPLE	20'	-													Yellow-reddish brown fall color
CRATGEUS PHAENOPYRUM	WASHINGTON THORN	25'	20' W													Orange-red fall color.
PYRUS 'ARISTOCRAT'	ARISTOCRAT PEAR		W													Pyramidal w/ upcurving branches
'REDSPIRE'	REDSPIRE PEAR		W													Ditto w/ yellow-red fall color
'CLEVELAND SELECT'	CLEVELAND PEAR		W													
ROBINIA 'PURPLE ROBE'	PURP. ROBE LOCUST	40'														
SHRUBS:																
ARCTOSTAPHYLOS 'PONCHITA'	PONCHITA MANZANITA	2-3'	2-3'													Water to establish. Morning sun
CHIMAPHILIFERA MILLETOLIMUM	FERNBUSH	5'	4' W													Spicy fragrance
FALLUGIA PARADOXA	APACHE PLUME	5'	6'													Mounding
MAHONIA REPENS	CREEPING OREGON GRAPE	1 1/2'	3/4'													Groundcover
PEROVSKIA ATRIPICIFOLIA	RUSSIAN SAGE	4'	3 1/4'													Lean silver foliage
PRUNUS BESSEYI 'SELECT SPREADER'	WESTERN SAND CHERRY	4'	4' W													Red new bark; fragrant fls. before lvs.
SALVIA DORR	DORR SAGE	2'	2-3'													Silvery lvs. South/west fog. Rain
PERENNIALS:																
ACHILLEA 'CORONATION GOLD'	CORONATION GOLD YARROW	3'	2'													Russian Sage
ACHILLEA x 'MOONSHINE'	MOONSHINE YARROW	18"	24"													Russian Sage
AGASTACHE RUPESTRIS	SUNSET HYSSOP	3'+	18"													" - Moonshine Yarrow
AMORPHA CANESCENS	LEAD PLANT	2-4'	3'													Spicy fragrance; blue lvs
COREOPSIS GRANDIFLORA 'SUNRAY'	SUNRAY COREOPSIS	24"	18"													Grey foliage
DALEA PURPUREUM	PURP. PRAIRIE CLOVER	18"	18"													Stiff upright stems
HESPERALOE PARVIFLORA	TEXAS RED YUCCA	5'	3'													Blue-green lvs. Spring/Summer
LINUM LEWISII 'APPAR'	APPAR BLUE FLAX	18"	18 1/2"													Blue + yellow
NEPETA FAAS 'SELECT BLUE'	CATMINT	12"	18"													Beds + meadows
PENSTEMON MEX. 'RED ROCKS'	RED ROCKS PENST.	18"	15"													Grey-green lvs.
P. PINIFOLIUS	PINELEAF PENST.	15"	18"													
P. STRICTUS	ROCKY MTN. PENST.	24"	36"													Rounded shrublet
POTENTILLA FRUT. V. PURDOMII	FOREVER GOLD POTENT.	2-4'	2-4'													
SALVIA 'MAY NIGHT'	MAY NIGHT SAGE	18-24"	18-24"													Flax, contrast for contrast. Borders, massing.
CALAMAGROSTIS 'KARL FORSTER'	FEATHER REED GRASS	4-5'	2'													Underplant species. Muleh roots.
NOLINA TEXANA	BEARGRASS	2'	3'													Aromatic, grey-green lvs. Notes

What plants to use: artistic vision (intentionality)

- Purpose: define your parameters (hands-on or visual, children, pets)
- Plants as geometry (specimen, groups, masses) for layering and creating focal points, direction, enclosure, etc.
- Relationships of form and seasonal color: “painting with plants”
- Framing the vegetation:
 - Buildings (style, windows, entrances, materials and color)
 - Views (to keep or to screen?)
 - Trails (dirt, gravel, stone, etc.)
- Surroundings (mountains, cliffs, valley, water, etc.) ... Japanese “borrowed landscape”

Plant communities



Buckwheat (*Eriogonum*)
& Mormon Tea (*Ephedra*)

Artemisia

Salvia

Penstemon

Agave

Yucca

Blue Fescue

Achillea

Plant 'palette': preliminary list and order

SHRUBS

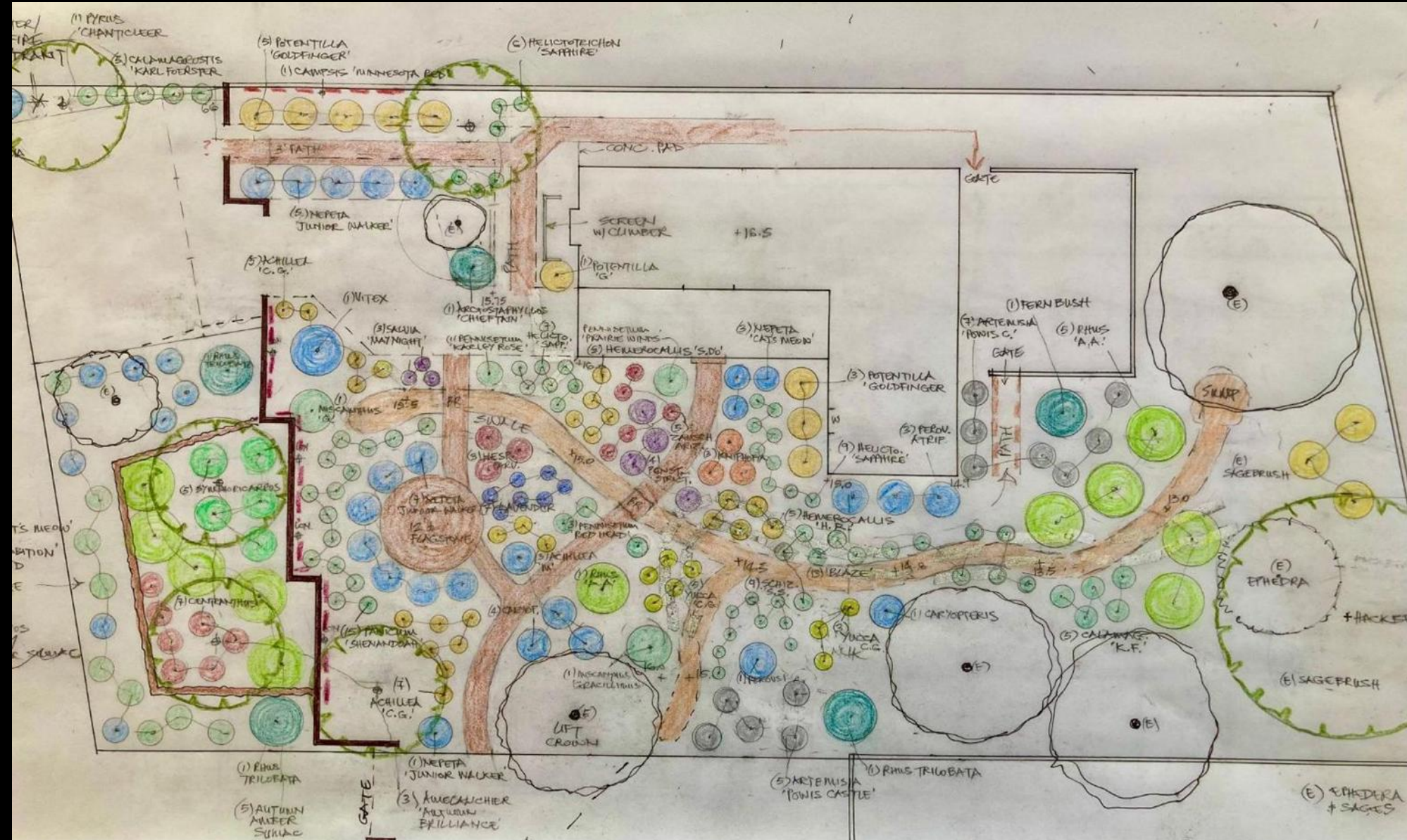
Artemisia 'Powis Castle'	Powis Castle Artemisia
<u>Caryopteris x clandonensis</u>	Blue Mist Spiraea
'Dark Knight', 'Grand Bleu'	
<u>Chamaebatiaria millefolium</u>	Fernbush
<u>Chilopsis linearis</u>	Desert Willow
<u>Chitalpa tashkentensis</u>	Chitalpa
<u>Fallugia paradoxa</u>	Apache Plume
<u>Foresteria neomexicana</u>	New Mexico Privet
<u>Hesperaloe parviflora</u>	Red Yucca
Lonicera 'Major Wheeler'	Major Wheeler Honeysuckle
<u>Perovskia atriplicifolia</u> vars.	Russian Sage
<u>Potentilla fruticosa</u> 'Goldfinger'	Shrubby Cinquefoil
<u>Rhus trilobata</u> 'Low-Gro'	Low-Gro Threelobed Sumac
<u>Salvia greggii</u>	Autumn Sage
<u>Santolina chamaecyparissus</u>	Lavender Cotton

PERENNIALS

Achillea 'Moonshine'	Moonshine Yarrow
<u>Centranthus ruber</u>	Red Valerian
<u>Coreopsis</u> 'Moonbeam', 'Zagreb'	Threadleaf Coreopsis
<u>Helianthus maximiliani</u>	Maximilian Sunflower
<u>Hemerocallis</u> 'Stella d'Oro'	Stella d'Oro Daylily
Kniphofia vars	Red Hot Poker
<u>Lavandula angustifolia</u> vars.	English Lavender
<u>Nepeta faassenii</u> vars.	Catmint
<u>Salvia sylvestris</u> 'Caradonna', 'May Night'	Meadow Sage

Quantity	Search List (Botanical- Common Name Size/Attributes; Category Price	Latin Name ~ Common Name	Size	Unit Price	Extended Price
1	Zelkova serrata Musashino ~ Zelkova : #25; Rewholesale; 2" ; Deciduous Trees \$305	Zelkova serrata Musashino ~ Zelkova	#25; Rewholesale; 2" ; Deciduous Tree	\$305	\$ 305.00
1	Celtis occidentalis ~ Common Hackberry : B&B; Rewholesale; 1.75" ; Deciduous Trees \$299		B&B; Rewholesale; 1.75" ; Deciduous Tree	\$299	\$ 299.00
1	Campsis radicans Minnesota Red ~ Trumpet Vine : #5 ; Vines \$27	Campsis radicans Minnesota Red ~ Trumpet Vine	#5 ; Vine	\$27	\$ 27.00
1	Chamaebatiaria millefolium ~ Fern Bush : #5 ; Shrubs \$25.5	Chamaebatiaria millefolium ~ Fern Bush	#5 ; Shrub	\$25.5	\$ 25.50
1	Vitex agnus-castus SMVACBD PP26614 Blue Diddle® ~ Chaste Tree : #3 ; Shrubs \$22.75	Vitex agnus-castus SMVACBD PP26614 Blue Diddle® ~ Chaste Tree	#3 ; Shrub	\$22.75	\$ 22.75
3	Rhus trilobata ~ Three Leaf Sumac : #5 ; Shrubs \$25.5	Rhus trilobata ~ Three Leaf Sumac	#5 ; Shrub	\$25.5	\$ 76.50
11	Rhus trilobata Autumn Amber ~ Three Leaf Sumac : #5 ; Shrubs \$29.5	Rhus trilobata Autumn Amber ~ Three Leaf Sumac	#5 ; Shrub	\$29.5	\$ 324.50
12	Artemisia Powis Castle ~ Wormwood : #1 ; Perennials/Ferns \$6.85	Artemisia Powis Castle ~ Wormwood	#1 ; Perennials/Fern	\$6.85	\$ 82.20
2	Caryopteris x clandonensis Dark Knight ~ Bluebeard, Blue Mist or False Spirea : #5 ; Shrubs \$23	Caryopteris x clandonensis Dark Knight ~ Bluebeard, Blue Mist or False Spirea	#5 ; Shrub	\$23	\$ 46.00
3	Hesperaloe parviflora ~ Red Yucca : #5; Rewholesale ; Shrubs \$27	Hesperaloe parviflora ~ Red Yucca	#5; Rewholesale ; Shrub	\$27	\$ 81.00
4	Lonicera sempervirens 'Major Wheeler' : #1	Lonicera sempervirens 'Major Wheeler'			\$ -□□
5	Perovskia atriplicifolia ~ Russian Sage : #1 ; Shrubs \$7.75	Perovskia atriplicifolia ~ Russian Sage	#1 ; Shrub	\$7.75	\$ 38.75
9	Potentilla fruticosa Goldfinger ~ Yellow Shrubby Cinquefoil : #5 ; Shrubs \$23	Potentilla fruticosa Goldfinger ~ Yellow Shrubby Cinquefoil	#5 ; Shrub	\$23	\$ 207.00
5	Achillea Moonshine ~ Yellow Yarrow : #1 ; Perennials/Ferns \$6.85	Achillea Moonshine ~ Yellow Yarrow	#1 ; Perennials/Fern	\$6.85	\$ 34.25
7	Centranthus ruber Coccineus ~ Red Valerian : #1 ; Perennials/Ferns \$6.85	Centranthus ruber Coccineus ~ Red Valerian	#1 ; Perennials/Fern	\$6.85	\$ 47.95
11	Coreopsis verticillata Zagreb ~ Threadleaf Tickseed : #1 ; Perennials/Ferns \$6.85	Coreopsis verticillata Zagreb ~ Threadleaf Tickseed	#1 ; Perennials/Fern	\$6.85	\$ 75.35
5	Hemerocallis Stella DOro ~ Golden Yellow Daylily, Early Summer, Rebloomer : #1 ; Perennials/Ferns \$6.85	Hemerocallis Stella DOro ~ Golden Yellow Daylily, Early Summer, Rebloomer	#1 ; Perennials/Fern	\$6.85	\$ 34.25
3	Kniphofia Jackpot PP31283 ~ Red Hot Poker, Torch Lily : #1 ; Perennials/Ferns \$11	Kniphofia Jackpot PP31283 ~ Red Hot Poker, Torch Lily	#1 ; Perennials/Fern	\$11	\$ 33.00
7	Lavandula angustifolia Hidcote Blue ~ Lavender : #1 ; Perennials/Ferns \$6.85	Lavandula angustifolia Hidcote Blue ~ Lavender	#1 ; Perennials/Fern	\$6.85	\$ 47.95
13	Nepeta x faassenii Novanepjun Junior Walker™ PP23074 ~ Catmint : #1 ; Perennials/Ferns \$6.85	Nepeta x faassenii Novanepjun Junior Walker™ PP23074 ~ Catmint	#1 ; Perennials/Fern	\$6.85	\$ 89.05
7	Salvia nemorosa Caradonna ~ Meadow or Woodland Sage : #1 ; Perennials/Ferns \$6.85	Salvia nemorosa Caradonna ~ Meadow or Woodland Sage	#1 ; Perennials/Fern	\$6.85	\$ 47.95
7	Bouteloua gracilis Blonde Ambition PP22048 ~ Blue Grama Grass : #1 ; Grasses \$9.5	Bouteloua gracilis Blonde Ambition PP22048 ~ Blue Grama Grass	#1 ; Grasse	\$9.5	\$ 66.50
8	Calamagrostis acutiflora Karl Foerster ~ Feather Reed Grass : #1 ; Grasses \$6.95	Calamagrostis acutiflora Karl Foerster ~ Feather Reed Grass	#1 ; Grasse	\$6.95	\$ 55.60
2	Miscanthus sinensis Gracillimus ~ Maiden Grass : #5 ; Grasses \$24.5	Miscanthus sinensis Gracillimus ~ Maiden Grass	#5 ; Grasse	\$24.5	\$ 49.00
9	Panicum virgatum Shenandoah ~ Switch Grass : #1 ; Grasses \$6.95	Panicum virgatum Shenandoah ~ Switch Grass	#1 ; Grasse	\$6.95	\$ 62.55
1	Pennisetum alopecuroides PRAIRIE WINDS® Desert Plains PP20751 ~ Dwarf Fountain Grass : #1 ; Grasses \$11.25	Pennisetum alopecuroides PRAIRIE WINDS® Desert Plains PP20751 ~ Dwarf Fountain Grass	#1 ; Grasse	\$11.25	\$ 11.25
7	Schizachyrium scoparium Blaze ~ Little Bluestem : #1 ; Grasses \$7.75	Schizachyrium scoparium Blaze ~ Little Bluestem	#1 ; Grasse	\$7.75	\$ 54.25

Planting plan









Trees (not Kanab)



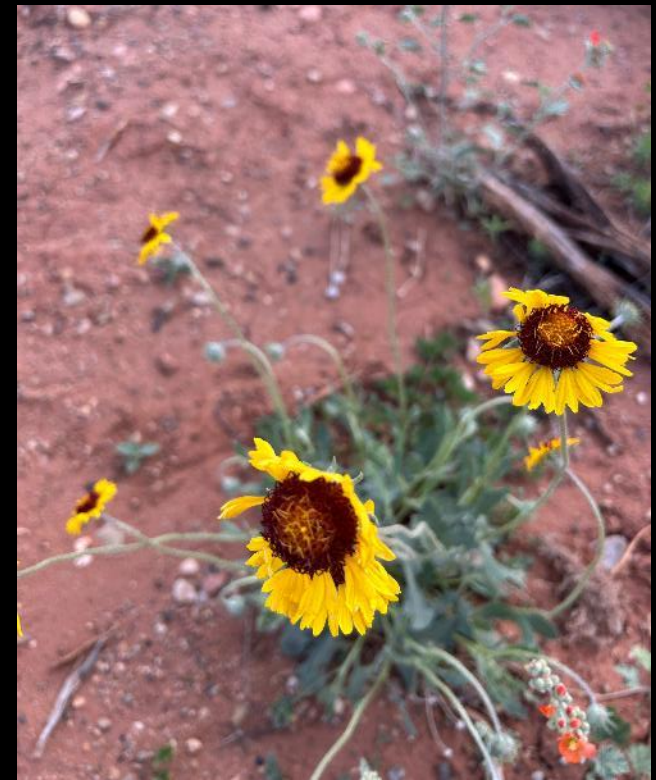
Shrubs



Cactus



Wildflowers



Grasses (not our yard)



Grasses (Kanab yard)



How increase native plants

- Gather seeds from nearby native plants
 - With gloves or scissors and bag
 - Scatter in yard
 - Cover some seeds with sticks
- Pull up native plants to transplant
 - Where allowed! Such as your yard, friend's yard, roadside that will be mowed
 - Best when ground is wet



EXISTING:

Juniper
Mountain Mahogany
Rabbitbrush
Sand Sagebrush
Globemallow
Beebalm
Evening Primrose
Datura
Sand Dropseed

ADDED:

Viburnum
Fernbush
Apache Plume
Butterfly Bush
Oregano
'Blaze' Little Bluestem



Minimize soil disturbance



- Don't clear vegetation
 - Bare soil invites annual weeds (tumbleweed, storksbill, cheatgrass, etc.)
 - Leave standing plant stems ; they trap seeds that blow in wind
- Don't rake
- Create paths so you don't trample everywhere
- Allow biological soil crust to thrive
 - It quickly forms and reduces weed seed establishment

Weed Control

- Remove seeds: flowers and seedheads
- Let succession happen, from annuals to perennials
- Manual removal works well for small area, like yards
 - Prefer not to use chemicals
- Annuals
 - Cut when young, and leave on ground if no seeds
 - After seeds are produced, cut and bag flowers
 - No need to dig up annuals because they die anyway; better not to create more soil disturbance
- Perennials
 - Dig up, or cut repeatedly (slow the growth and flower/seed development); last resort is chemicals



Wildlife

- You are supporting habitat for many animals
 - Birds – quail, sparrows, meadowlark, etc.
 - Mammals – deer, mice, rabbits, ground squirrels, etc.
 - Insects – pollinators
 - Gophers – don't try to exterminate them
- Enjoy the wildlife ... and accept their impacts
- Animals will use (eat, damage, etc.) some of your plants; and that is natural and OK







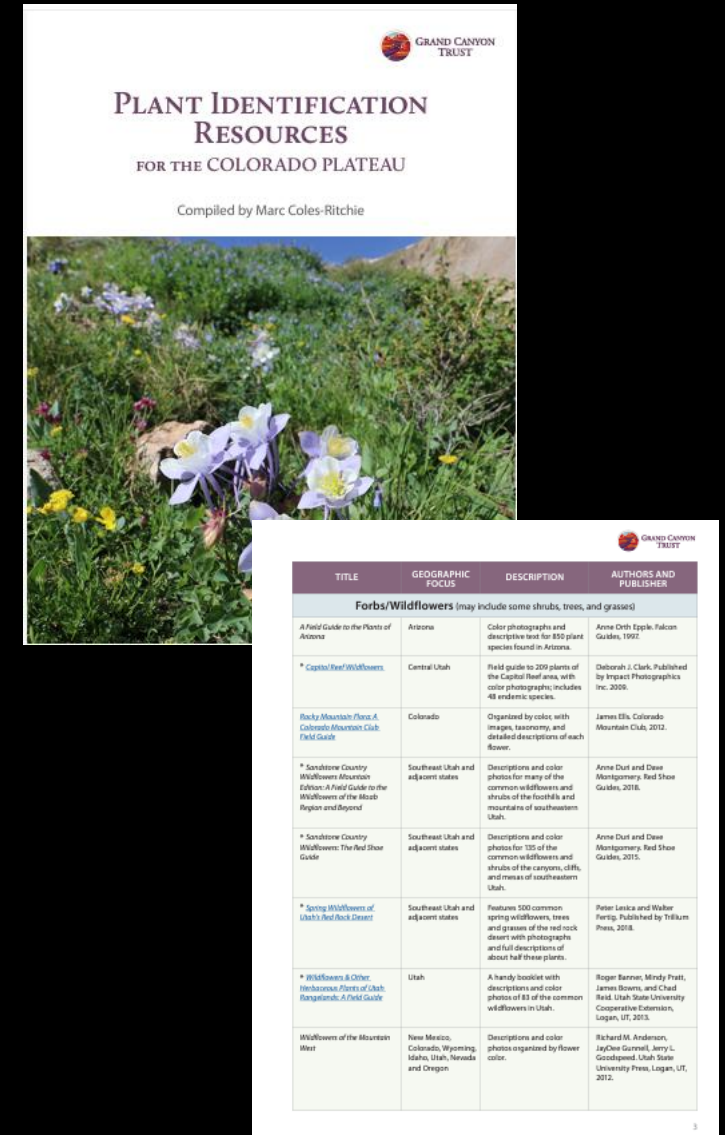
Have Fun & Learn

- Observe
- Spend time in yard
- See how plants change
- Don't expect static landscape
- Excitement of new arrivals
- Share info & plants with friends & neighbors

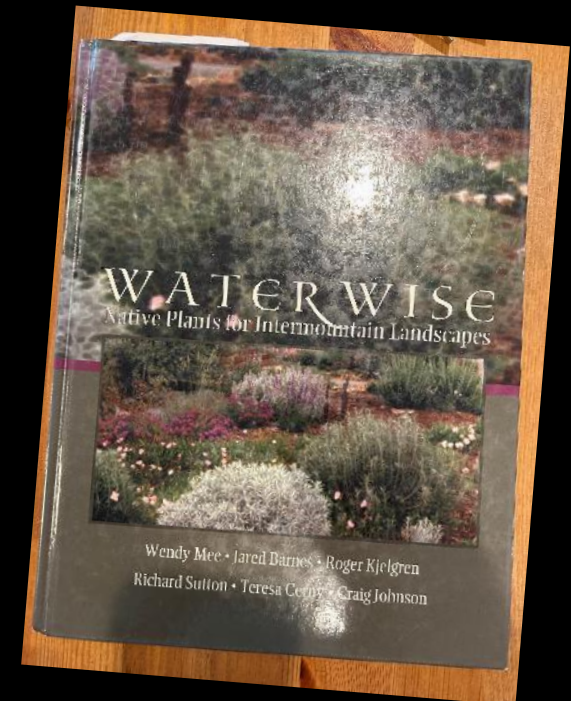
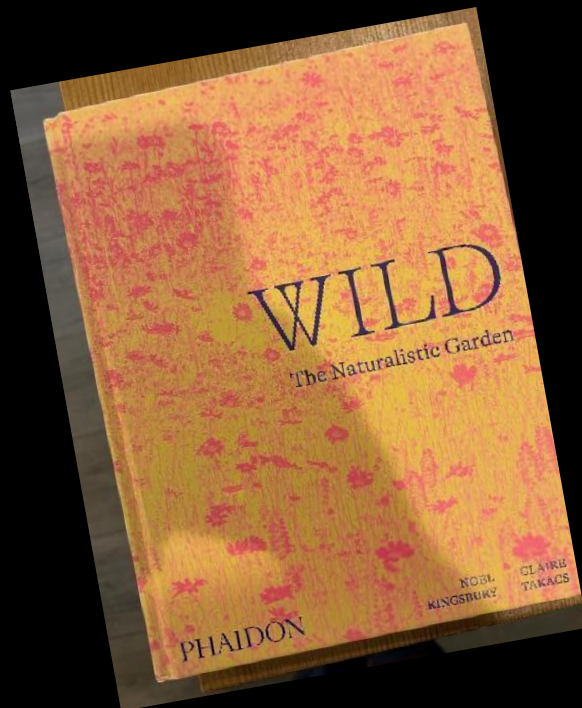
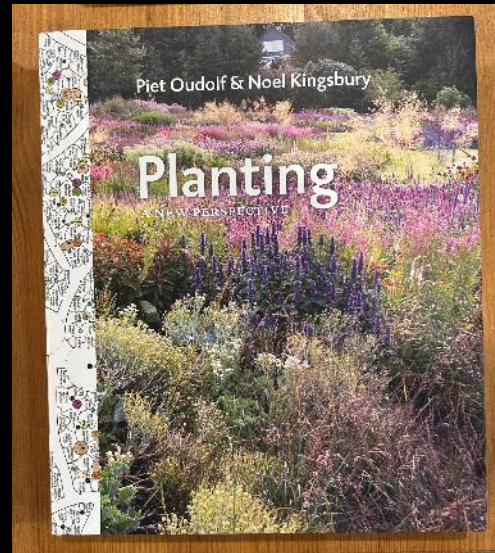
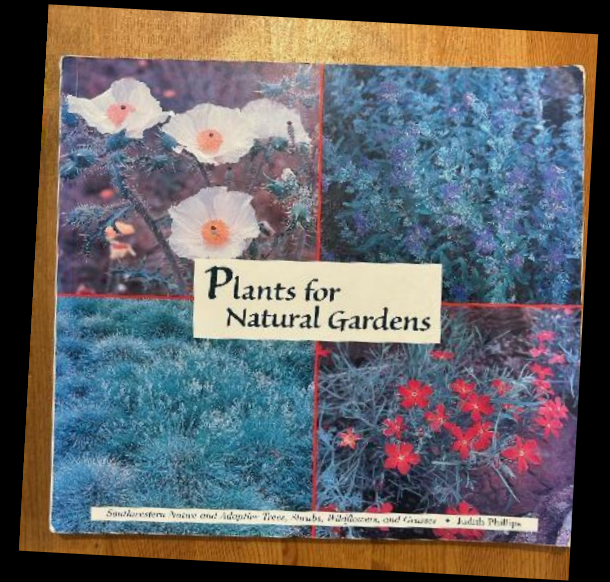
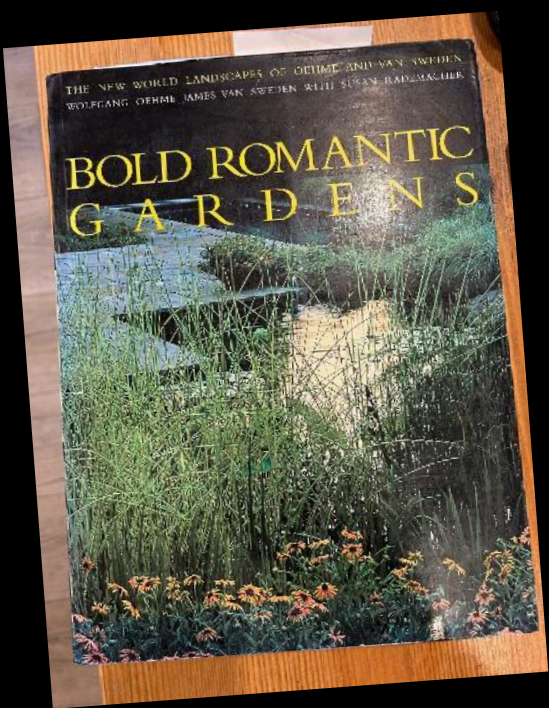


Plant Identification Tools

- iNaturalist – post and others will identify
- List of books, apps and websites:
<https://www.grandcanyontrust.org/plant-identification-resources>
- Send me photos



Book resources (listed on next slide)



- 'Wild - The Naturalistic Garden' Noel Kingsbury & Claire Takacs
- 'Planting - A New Perspective' Piet Oudolf & Noel Kingsbury
- 'Bold Romantic Gardens' Wolfgang Oehme & James van Sweden
- 'Plants for Natural Gardens - Southwestern Native & Adaptive Trees, Shrubs, Wildflowers & Grasses' Judith Phillips
- 'Waterwise - Native Plants for Intermountain Landscapes' Wendy Mee et al
- 'The Xeriscape Flower Gardener' - A Waterwise Guide for the Rocky Mountain Region' Jim Knopf
- 'Native Plants for Southwestern Landscapes' Judy Mielke
- 'Canyon Country Wildflowers - A Field Guide to Common Wildflowers, Shrubs, and Trees' Damian Fagan
- 'Weeds of the West' Tom Whitson (editor)
- 'Noxious Weed Field Guide for Utah' Joel Merritt et al
- 'Monument Plant List'

Online resources

- Progressive Plants (www.progressiveplants.com) Click on 'Catalog' for excellent plant information and availability.
- High Country Gardens (www.highcountrygardens.com) Waterwise plants for the Southwest, including sustainable lawns.
- Monrovia (www.monrovia.com) Great for plant information and ideas.
- Western Native Seed (www.westernnativeseed.com) Native grass and wildflower seed mixes for Southwest habitats, and individual seeds.
- Dripworks (www.dripworks.com) Mail order drip irrigation supplies.

Past Presentations at Kanab Library

- Wildflowers
- Grasses
- Lichens
- Shrubs
- Cactus
- Riparian plants

Here pdf's are available



Nature Talks in Kanab

File Edit View Insert Format Tools Extensions Help

100% Normal text Arial 15

Science and Nature Talks in Kanab in 2024 and beyond

The Grand Staircase-Escalante National Monument [science program](#) hosts a lecture series at the Kanab Library (374 N Main Street) that is open to all. Times are 6pm unless noted otherwise. If you have ideas for topics or speakers contact Marc Coles-Ritchie (mcolesritchie@blm.gov).

Upcoming Talks (2025)

- February 12: Riparian and wetland plants (by Marc Coles-Ritchie)
- February 26: Bighorn sheep in GSENM and other Treasured Areas of Southern Utah ([Joel Berger](#))
- March 12: Walking with Tyrants: Grand Staircase-Escalante's Tyrannosaur Renaissance (by Dr. Alan Titus)
- April 9: Landscaping with Native Plants (by Marc Coles-Ritchie & Tim Clarke)
- April 16: Bumblebees & Citizen Science (Amy Dolan)
- May: many nature talks at
 - [Amazing Earthfest](#) May 8-11, 2025 in Kanab
 - Grand Staircase-Escalante region symposium March 20-22, 2025 in Escalante; [agenda will be here](#)
- Fall: ?

Past Presentations (link to pdf [here](#) and below)

- January 15, 2025: [Cactus](#) (by Marc Coles-Ritchie & Jared Higgs)
- December 11, 2024: [Lichens](#) (by Steve Leavitt)
- November 13, 2024: [Cultural site stewardship](#) (Lexi Little & Caitlyn McCallister)
- October 9: [Shrubs](#) (by Marc Coles-Ritchie)
- August,: [Grasses](#) (by Marc Coles-Ritchie)
- April 2024: [Wildflowers](#) (by Marc Coles-Ritchie)
 - Related presentations [here](#) and [here](#).
- March 2024: Wildlife (by Joel Berger)
 - Related presentation [here](#)

Upcoming Events

Talks at Kanab Library on Science (6pm)

- April 16: Bumblebees & Citizen Science (Amy Dolan)

--- Summer Break ---

- Sept. 10: Cup and Channel Petroglyphs (Michael Terlep)
- Oct. 8: Bats (Jackie Grant)
- Nov. 12: Native Buckwheat Plants (Web Staley & Marc Coles-Ritchie)
- Dec. 9, 2025: Mountain lions (Joshua Lisbon)

- 2026 topics: trees, river restoration, prairie dogs, ethnobotany, nature photography...

Other ecology events

- Amazing Earthfest May 8-11 in Kanab

End



Photos

- Marc's online Flickr albums have many native plants:
 - <https://www.flickr.com/photos/marcecology/collections>

