



Utah
SHPO



UTAH CULTURAL SITE STEWARDSHIP





Introductions

Lexi Little

Operations Coordinator for the Utah Cultural Site Stewardship Program

State Historic Preservation Office

- Born and raised in Salt Lake City
- Previously worked for the Division of Outdoor Recreation within the DNR
- Bachelor's degree in Parks, Recreation, and Tourism from the University of Utah
- Runs freakishly long distances and up mountains for fun with my two dogs and husband



Introductions

Caitlyn McAllister

Grand Staircase-Escalante National Monument
Archaeologist

Bureau of Land Management

- Born in Salt Lake City and raised in Tooele
- Graduated in 2022 with a bachelor's degree in Anthropology with an emphasis in Archaeology from the University of Utah
- Previously interned with the BLM Utah State Office and Paria River District Office
- Loves crafting, video games, and my two cats



Tonight's Agenda

- How the UCSS Program came to be
- Why a centralized program?
- What stewards do
- How the program works & getting involved
- Land manager support
- Local steward impacts
- Why the program is so valuable

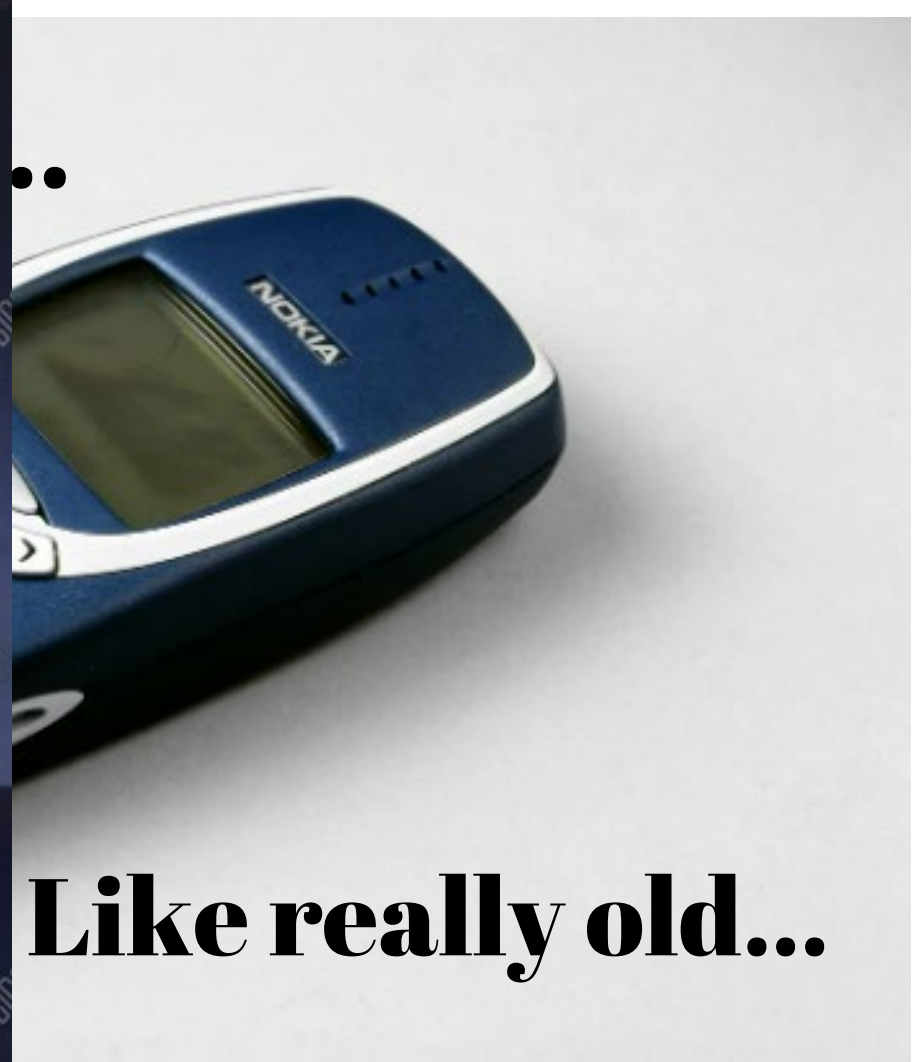




INDUSTRY

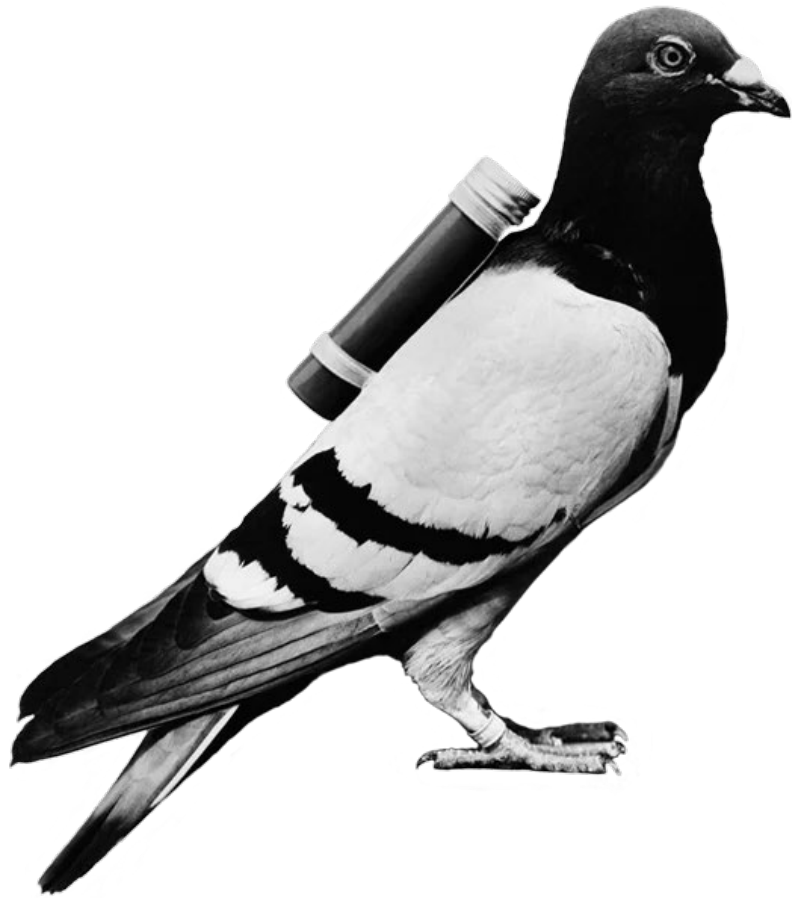


The Utah Cultural Site Stewardship Program



...

Like really old...



**Utah is even
older than this**

UTAH ARCHAEOLOGY

12,000 Years Ago

8,000 Years Ago

2,000 Years Ago

700 Years Ago

100 Years Ago

11,000 BC

Paleoindian



Climate
Warms
Up

Ice Age
Ends



7,000 BC

Archaic



300 BC

Ancestral Puebloan



500 BC

Fremont



AD 1300

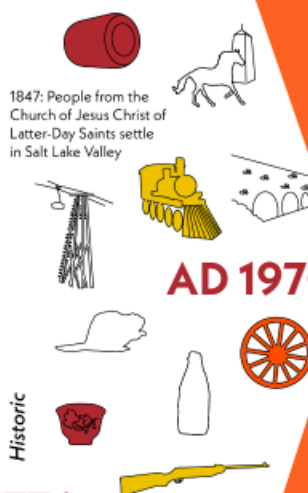
Late Prehistoric



Utes Acquire
Horses

AD 1250

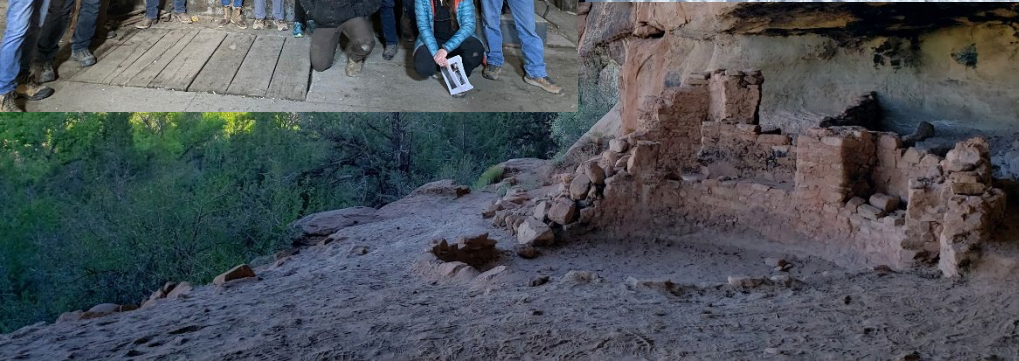
AD 1776



1847: People from the
Church of Jesus Christ of
Latter-Day Saints settle
in Salt Lake Valley

AD 1970

** See Timeline Key For Detailed Descriptions



Archaeology 101



The study of human activity through the recovery and analysis of material culture.



Why do archaeology & cultural sites matter?

The background image shows a rustic stone building, possibly a well or a small house, constructed from large, flat, tan-colored stones. The building has a wooden door and a window. It is situated in a dry, desert-like environment with sparse vegetation and a clear blue sky with some clouds. A semi-transparent grey triangular overlay covers the right side of the image, containing the text.

**How the
program came
to be**

More Visitors

Greater
Impacts

Public Outcry



Birthing Panel - Near Moab

UCSS Legislated
Into State Code

Statewide Centralized
Stewardship Effort

State Historic
Preservation Office



SHPO at Capitol Hill

UCSS - Legislated Into State Code



UTAH STATE
LEGISLATURE

Legislators

Bills

Code

Committees

Audits

Budget

Research and Legal

[Index Utah Code](#)

Title 9 Cultural and Community Engagement

Chapter 8a State Historic Preservation Office

Part 2 State Historic Preservation Office

Section 205 Cultural Site Stewardship Program -- Definitions -- Creation -- Objectives -- Administration -- Activities. (Effective 7/1/2023)

Effective 7/1/2023

9-8a-205. Cultural Site Stewardship Program -- Definitions -- Creation -- Objectives -- Administration -- Activities.

(1) As used in this section:

(a) (i) "Cultural site" means a significant archaeological or paleontological site in the state as determined by the office.

(ii) "Cultural site" may include a:

(A) site as defined in Section 9-8a-302; and

(B) site as defined in Section 79-3-102.

(b) "Stewardship program" means the Cultural Site Stewardship Program created in this section.

(c) "Vandalism" means to damage, destroy, or commit any other act that defaces or harms a cultural site without the consent of the governmental agency, including inscribing, marking, etching, scratching, drawing, painting on, or affixing to the cultural resource a

(2) There is created within the office the Cultural Site Stewardship Program.

(3) The office shall seek to accomplish the following objectives through administration of the stewardship program:

(a) protect cultural sites located in the state;

(b) increase public awareness of the significance and value of cultural sites and the damage done to cultural sites by vandalism;

(c) discourage vandalism and the unlawful sale and trade of archaeological artifacts and paleontological artifacts;

(d) support and encourage improved standards for investigating and researching cultural sites in the state;

(e) promote cooperation among governmental agencies, private landowners, Native American tribes, industry groups, and interested parties to cultural sites; and

(f) increase the inventory of cultural sites maintained in accordance with Subsections 9-8a-304(2)(b) and 79-3-202(1)(m).

(4) The office shall:

(a) maintain a position to oversee the operation of the stewardship program; and

(b) provide administrative services to the stewardship program.

Utah Stewardship Program Centralization With SHPO



Archaeology
Records

Compliance

Historic
Preservation

Human
Remains

Public
Archaeology



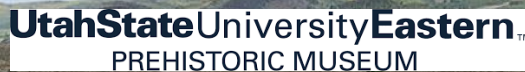
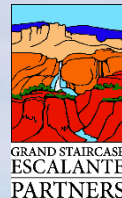
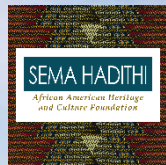
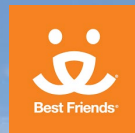
National Historic Preservation Act 1966 SHPO Mandate


Presenting a collective front

Nonprofit/
Corporate

State

Federal



A man with a receding hairline, wearing a dark suit, white shirt, and a striped tie, is speaking directly to the camera. He has a small American flag pin on his lapel. The background is an ornate room with a large American flag and a blue flag with a seal on the left, and a patterned armchair and a window with curtains on the right. The lighting is warm and focused on the man.

It's a remarkable legacy
of human endurance and adaptation.



0:14 / 1:46



Why A Cultural Site Stewardship Program?

A photograph of three people standing on a rocky cliff edge, looking out over a vast canyon. The person on the left is a man in a black jacket and khaki pants. The person in the middle is a woman wearing a green and blue striped vest over a blue shirt and dark pants. The person on the right is a man in a plaid shirt, brown pants, and a green cap. They are standing next to a metal tripod structure. The background shows a deep canyon with layered rock formations and snow-capped mountains in the distance under a cloudy sky.

150,297+
Sites

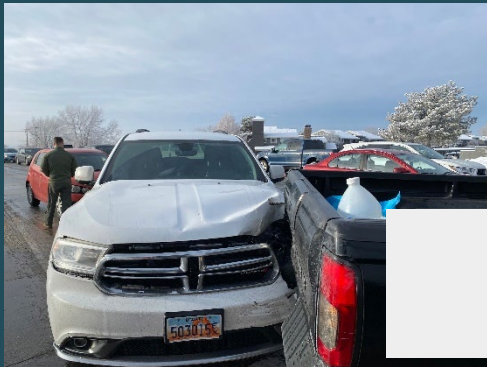
World
Renowned

Quality
of Life

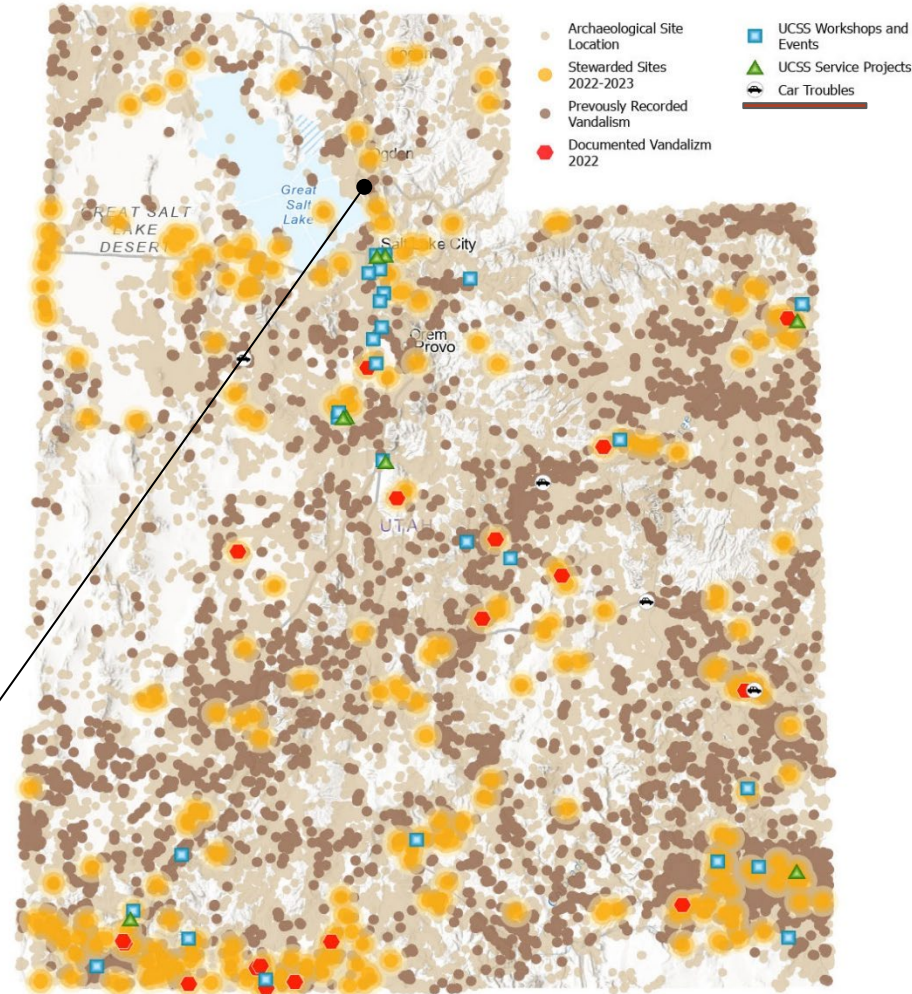
Loss of
History

7,000 Archaeological
sites vandalized

Land Managers Need Your Help!



Our latest car
trouble...



Change of thinking

Gatekeeping



Public
Participation





Primary drivers for stewardship

Safeguard Cultural Heritage

Building a Network of Support

Effective Public Involvement

Correcting & Preventing

BLM Fillmore Field Office






UCSS core pillars

- Public involvement in safeguarding Utah's cultural heritage
- Correcting & preventing inappropriate behavior
- Public education through training, events and projects
- Land manager support

**There are many ways to be
good stewards**





Public
Volunteers

Support
Land
Managers

How we Steward

Site Monitoring

Report
Any
Change

Monitor
Sites
(Using an app)

How we Steward

A photograph of three people working at a large wooden table in a library or archive. A woman on the left is smiling and looking at a document. A man in the middle is looking at a document. A man on the right is looking at a large map. There is a laptop on the table. In the background, there are bookshelves, a clock, and a person working at a desk. The room has wooden walls and shelves.

Project Involvement

A photograph of a magazine titled "History News" in the foreground. The cover features a woman's face and the text "Reconciliation, Race, and Recovery" and "MAKING HISTORY MATTER". The magazine is part of a collection on a table. The background shows the same library or archive setting as the first image.

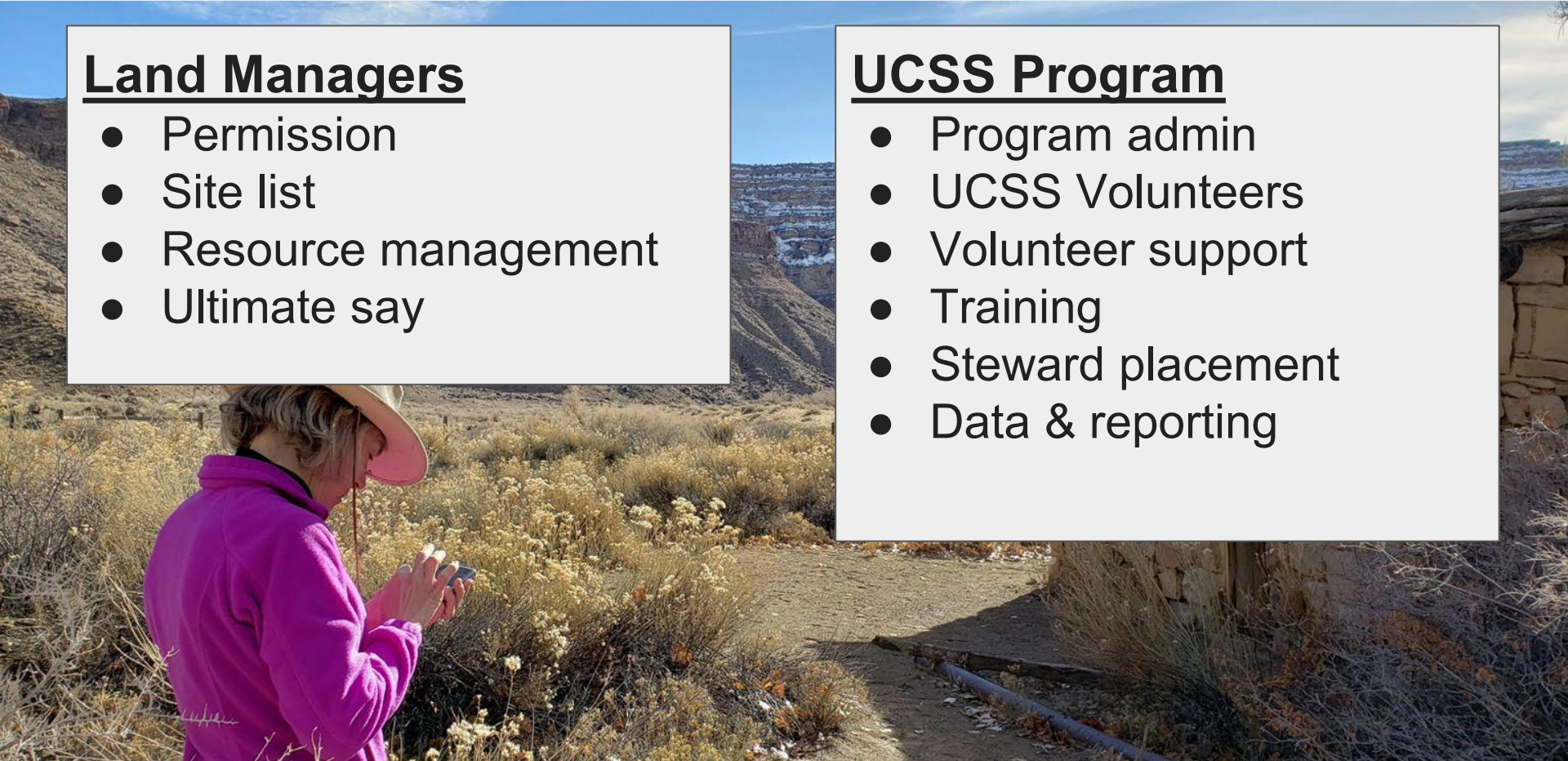
How UCSS Works

Land Managers

- Permission
- Site list
- Resource management
- Ultimate say

UCSS Program

- Program admin
- UCSS Volunteers
- Volunteer support
- Training
- Steward placement
- Data & reporting



The background image shows a rustic stone building, possibly a well or a small structure, constructed from large, flat, light-colored stones. The building is situated in a dry, desert-like environment with sparse vegetation and a clear blue sky with scattered white clouds. A semi-transparent blue triangular overlay is positioned over the right side of the image, containing the text.

Getting involved in the UCSS Program

First - In Class Training

Price River Ranger/BLM Staff UCSS New Steward Training

It's kind of Like basic training but not!

- In's and out's of being a site steward
- Some archaeology
- Important changes to monitor
- Stewarding safely & responsibly
- Confidentiality



Ability
Level

Historical
Interest

Preferred
Counties

Type of
Vehicle



Assigning Monitoring Locations

Baseline Visit

- First site visit
- Meet Land Manager
- Establish baseline
- Monitoring specifics for that site
- Review site info
- Survey123 app
- Ensure ability
- Questions



Ingestion of Monitoring Data



1) Stewards collect data on the Survey123 app in the field



2) Data is uploaded by SHPO into Marriot Library Database



TRUST LANDS
ADMINISTRATION



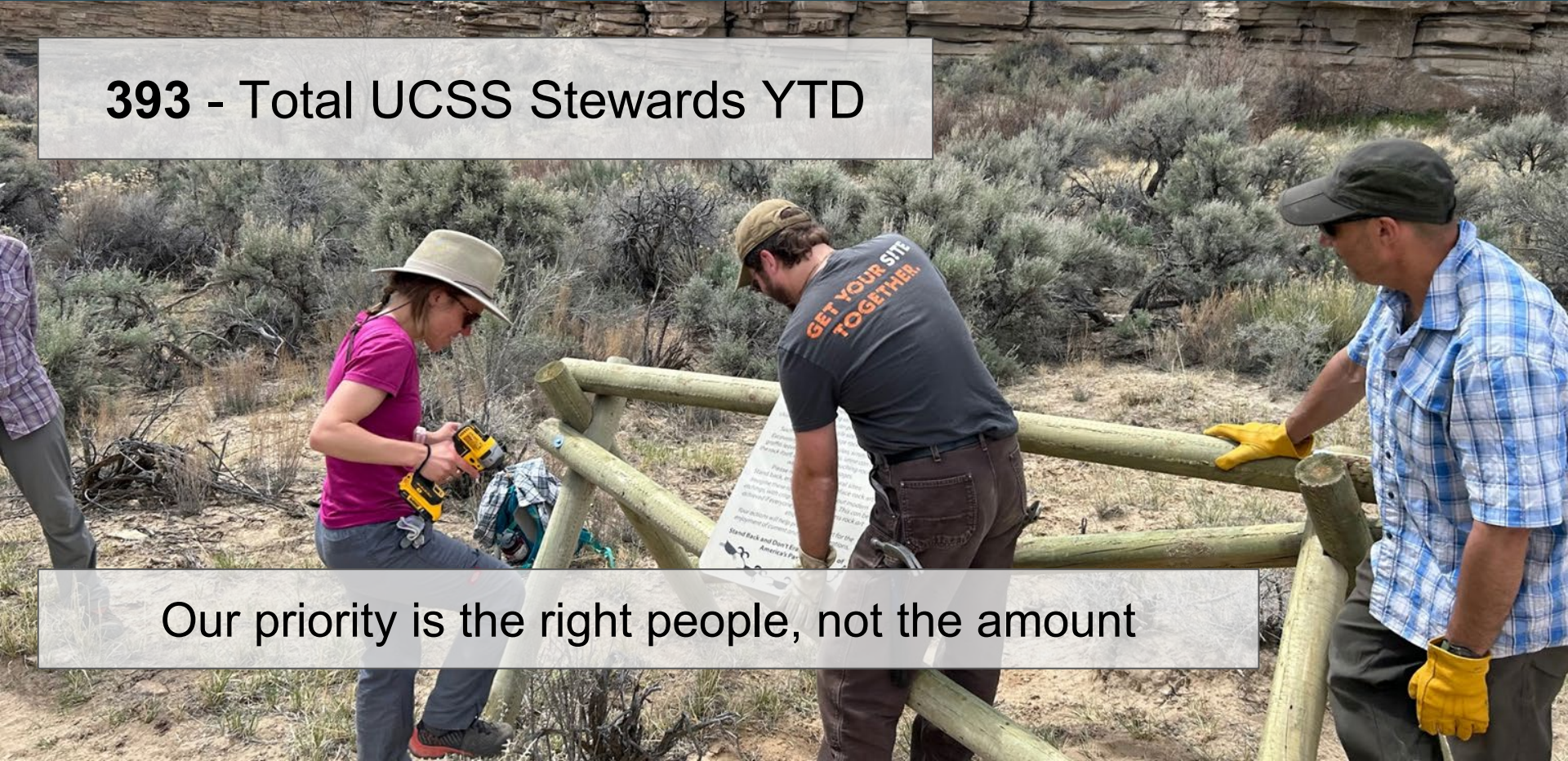
3) Data can be shared to all land managing partners -

Those with proper licensing can access data on own time

UCSS stewards operating statewide

393 - Total UCSS Stewards YTD

Our priority is the right people, not the amount



UCSS regional coordinators assist with volunteer placements, events & more



**Mike
Wingert**

San Juan & Grand
Counties



**Emery
Blanchard**

Kane, Garfield &
Washington Counties



**Ryan
Moreau**

Sanpete, Sevier &
Paiute Counties



**Kelly
Lynch**

Uintah, Carbon
& Daggett Counties



**Joan
West**

Grand
& Wayne Counties

Stewards are effective at supporting Utah's land managers

UCSS Stewards work with 153 individual Land Managers and partners

Land Manger Turnover 49

Support during Government Shutdowns/emergencies: 1'ish

Service Projects designed to supporting Land Managers: 7

Local Connections



UCSS Stewards & SHPO Staff Assisting BLM to record the historic Silver Reef Chinatown

Land manager support & partnerships

- What do cultural land managers do?
- How is the UCSS program beneficial to land managers?



Land manager support & partnerships



- Local steward impacts on the GSENM
- My experience with stewards so far...

Who are these stewards - Steven Cox



Who are these stewards - Katie Wallace




Who are these stewards - Susanne Stadler



The background image shows a rustic stone building with a wooden door, set in a dry, desert-like environment under a blue sky with scattered clouds. A semi-transparent grey triangular overlay covers the right side of the image, containing the text.

Why our stewards monitor

BLM Law Enforcement Officer working
with Stewards Uintah County



“Stewards are invaluable in Monument efforts to safeguard, protect and preserve irreplaceable cultural sites for current and future generations”.

Dinosaur National Monument Archaeologist



Technical Brief 22: Developing and Implementing Archeological Site Stewardship Programs

Sophia Kelly, Arizona State University

Site stewardship programs are effective at preventing the destruction of archeological sites through vandalism and looting.

Documentation of negative impacts



30 Significant negative impacts
reported by UCSS Stewards this year

BLM Archaeologist
Box Elder County

Stewardship assists with litigation

7/12/22, 10:10 AM

Stewardship P

New Digging Noticed Photos



new_dig_phot-20220711-171720.jpg



UCSS Monitoring Reports can and are currently being used in several ongoing litigations cases



6/13/24, 12:44 PM
Site Overview Photo

UCSS Monitoring Form



M2halftracklookingne.jpg



overview_photo-20240809-223025.jpg



Facingwest.jpg



Facingnorth.jpg

KSL.com News Sports Utah Travel Brandview TV Radio Video Obituaries Weather 86°

SAVE UP TO 10% MORE
EVERY GALLON, EVERY DAY

Mystery solved: Rangers recover military vehicle illegally taken from national forest

By Carter Williams, KSL.com | Posted - Aug. 27, 2024 at 5:32 p.m.



A photo of the half-track vehicle that was illegally taken from Dixie National Forest around June 22. U.S. Forest Service officials reported Tuesday that it was recovered. (U.S. Forest Service)

Fostering a unified front



Recreation & history overlap everywhere



- Recreation and history overlap everywhere
- Stewardship essential for protecting access
- Provides an avenue to give back
- Enhanced experience

A photograph of a rustic stone building in a desert landscape. The building is constructed from stacked, light-colored stones and has a wooden door and a window. The scene is set against a blue sky with white clouds. A semi-transparent blue triangle is overlaid on the right side of the image, containing the text "Our community".

Our community

We support & participate in local community events



Bears Ears Marathon - Aid station 21, City of Blanding

We like to give back



Site Documentation in Uintah County

We seek out educational opportunities



Old Spanish Trail Book Club Event

We support one another



Ferron Box Project - Multiple agencies

We are effective & consistent communicators



Image created by Lexi Little 2023

Utah Cultural Site Stewardship December 2023 Insider

2023 Event Recap Video

UCSS Program 2023 Recap



UCSS accomplished a lot this year and this video only covers a handful of our year wouldn't have been possible without our amazing volunteers and partners

2023 Event Recap Video

Upcoming Events

We have some great opportunities coming up. Check out the links below to learn more and to register for the events that are headed your way.

If you have any questions about events, please reach out to Lexi Little at lmittle@utah.gov



Survey123 Monitoring Report Virtual Refreshers

Thursday, January 18th at 5:00 PM

Virtual via Google Meet

Open to UCSS Stewards

[REGISTER HERE](#)

UCSS Book Club - Quarter 1

Thursday, March 21st from 5:30 PM - 6:15 PM

Virtual via Google Meet

Open to UCSS Stewards

[REGISTER HERE](#)



Dino - Excellence in Volunteerism Award



Happy Friday from #OneUtah, a weekly update from the office of Gov. Spencer J. Cox. Here's your recap of what we did this week, what's on the horizon, and



Volunteer to Protect

A team of cultural site volunteer stewards who safeguard archaeological and cultural sites in Utah's Dinosaur National Monument have earned a prestigious



Stewardship builds community out of diverse networks



**Utah Trails Forum Workshop
Partnership with BLM, Forest Service, State
Parks & SHPO**

Stewardship drives public education & awareness

UCSS has supported & organized 72 events for volunteers & the public over the last year





UTAH CULTURAL SITE
STEWARDSHIP

Thank You!

Ian Wright
iwright@utah.gov

Lexi Little
lmlittle@utah.gov