



U.S. Department of the Interior  
Bureau of Land Management

## Sloan Canyon April Newsletter

*April is like a secret whispered in the woods, a hush of green and bustling life.* -Sarah L. Wildes

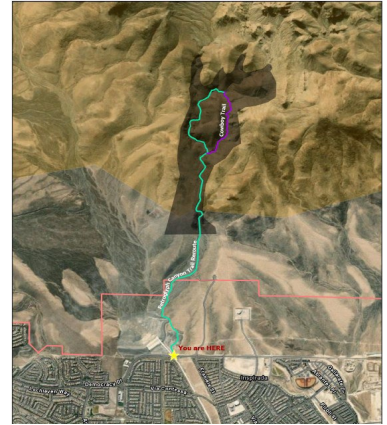
The construction is in full swing for the Sloan Canyon Visitor Contact Station! Nawghaw Poa Road, paved pedestrian trail, and Petroglyph trailhead parking lot are CLOSED to all pedestrian, bike, and vehicle traffic. Those who enter the closure area have and will be ticketed. Petroglyph trail and Sloan 101 trail have been rerouted with the new parking and trailhead [here](#). For more information on the temporary closure and reroutes please visit [here](#) for closure notice and [here](#) for up-to-date information. We thank you all for your patience and look forward to welcoming you to the new visitor contact station!

**Education Tip:** Join us on **April 17th at 10:30am at the West Henderson Library** for Looks that Kill: The Risks of Landscaping with Non-Native Plants at the Wildland-Urban Interface. Sign-up for the event [here](#).

**Fun Fact:** Temperatures are warming which mean reptiles will be more active and might be spotted on the trail. One reptile that you may spot on the trails is the Great Basin Collared Lizard. This dapper looking lizard is easily identified with its black collar, or rings, around its neck. These lizards are fast runners and can even run using their back legs. If you spot one with orange spots on its side, you are looking at pregnant female. Help protect wildlife by keeping your distance and taking only photos.

**Friendly Reminders:** Spring weather is here. Flowers are beginning to bud and wildlife is active. It is the perfect time of year to recreate at Sloan Canyon. Please remember there are no services at the rerouted Petroglyph and 101 trailhead. Plan to bring plenty of water and snacks. Use restrooms at nearby parks like Aventura Park and Montagna Park.

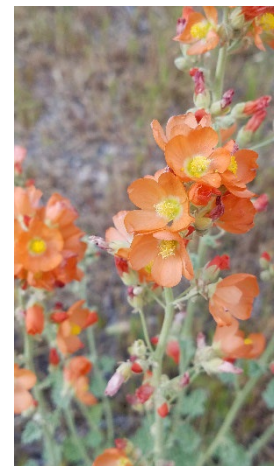
**Etiquette Principle:** As spring wildflowers begin to bloom, please remember to take only pictures. Picking and removing flowers from Sloan Canyon not only takes the beauty away from other visitors but also impacts wildlife. Flowers are important source of food for bugs, birds, and reptiles. Love the beauty of native plants? Head to your local nursery and see what native plants you can add to your yard. Some of our favorite native wildflowers are Brittlebush, Globemallow, and Firecracker Penstemon.



Petroglyph Trail Reroute Map



Great Basin Collared Lizard



Globemallow Flower