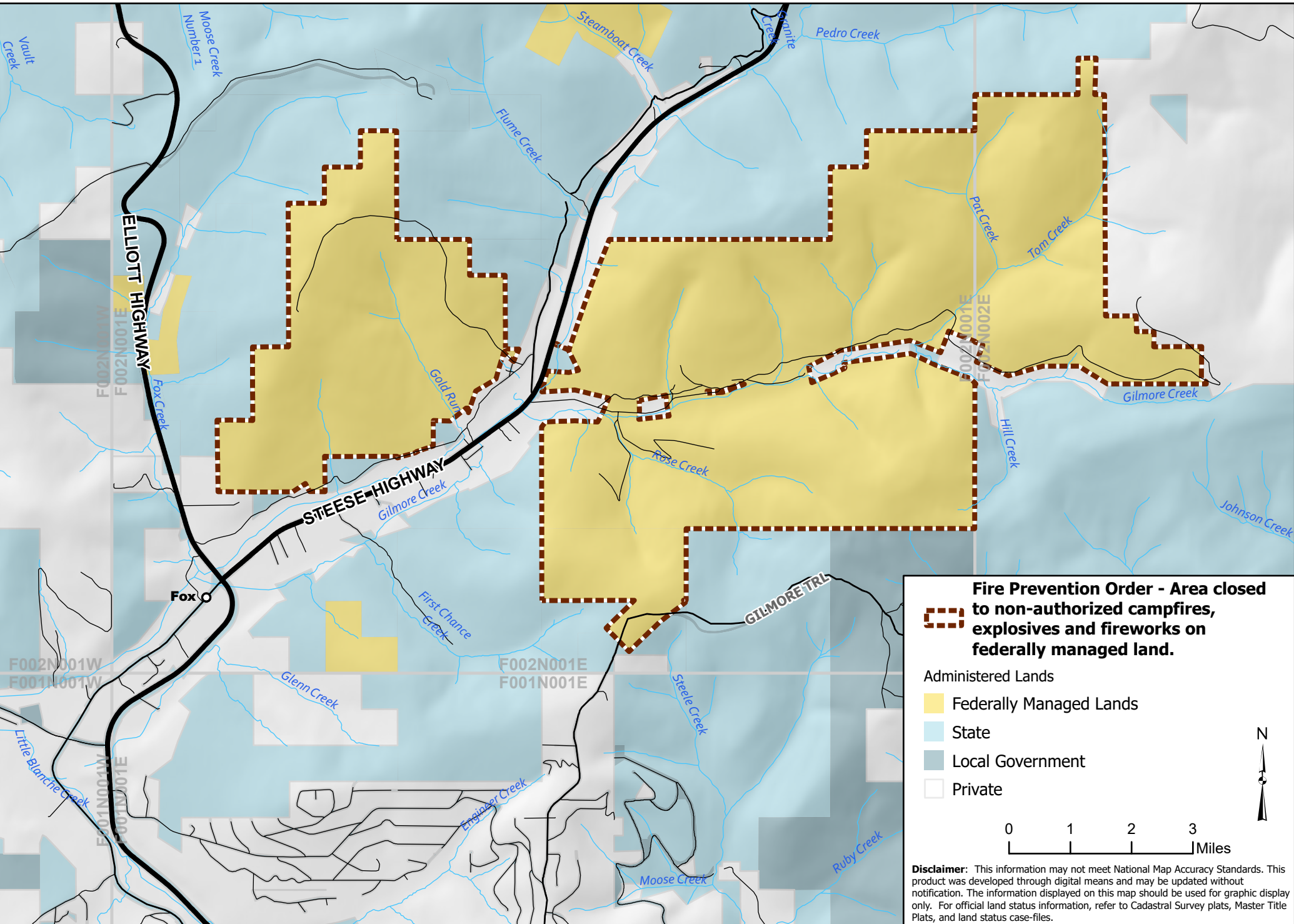




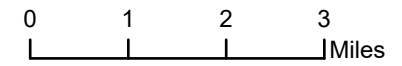
# Gilmore Creek Fire Prevention Order #AK020-025-001

U.S. DEPARTMENT OF THE INTERIOR | BUREAU OF LAND MANAGEMENT | ALASKA | EASTERN INTERIOR FIELD OFFICE



**Fire Prevention Order - Area closed to non-authorized campfires, explosives and fireworks on federally managed land.**

- Administered Lands
- Federally Managed Lands
  - State
  - Local Government
  - Private



**Disclaimer:** This information may not meet National Map Accuracy Standards. This product was developed through digital means and may be updated without notification. The information displayed on this map should be used for graphic display only. For official land status information, refer to Cadastral Survey plats, Master Title Plats, and land status case-files.