



**NATIONAL
CONSERVATION
LANDS**

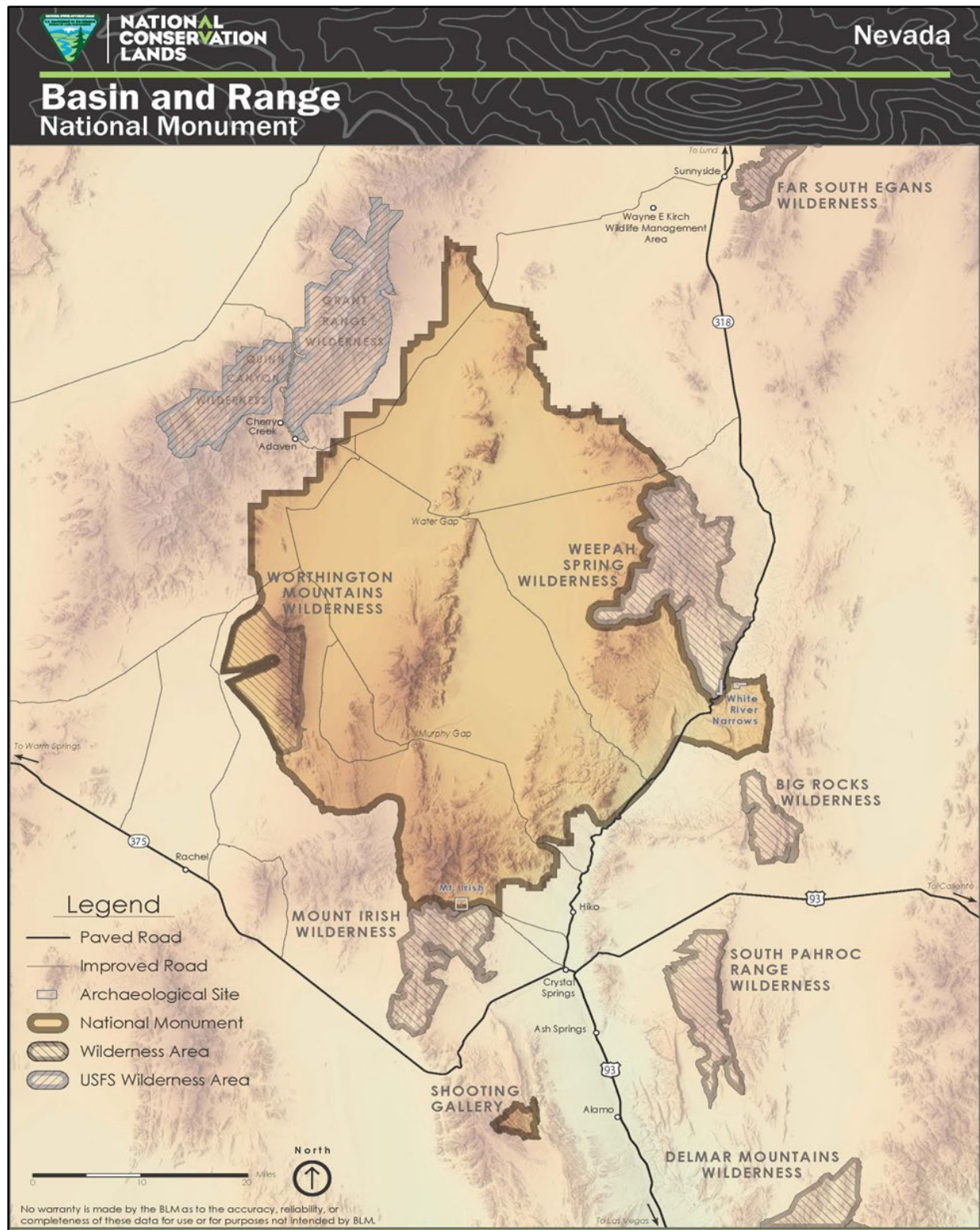
Nevada
2024: Annual Manager's Report

Basin and Range

National Monument



Map



Accomplishments

The year 2024 was full of events, partnerships, and accomplishments in Basin and Range National Monument. A map and brochure of the area were created by local staff in collaboration with the National Operations Center. On National Public Lands Day, volunteers installed signs at the north, south (photo below), and west boundaries. In September, a BatBlitz, led by Eastern Nevada Landscape Coalition and Nevada Department of Wildlife, recorded over 100 individuals of nine species of bats during four nights of monitoring. A geological inventory and associated geologic guide were completed. An Interdisciplinary Team continued to work on the NEPA document for the John Uhalde & Co. Outcome Based Grazing project in 2024 with an estimated public comment period in 2025.



Challenges

Drought conditions in 2024 were challenging. Undesirable non-native plant species, like Russian thistle and horehound (shown below), were problematic for resource conditions in some portions of the monument. Staffing shortages across the Ely District made an impact as monument staff assumed additional workload and projects beyond those within the monument. Litigation prioritized some projects and issues as higher and more pressing than other Bureau priority projects.



Visitors

The estimated visitation for Basin and Range National Monument in 2024 was 12,574 visits and 6,397 visitor days. These numbers were higher than the previous year due to adjustments to the visitation formulas used in conjunction with traffic counters. Almost half of monument visitors spent time at public cultural sites, such as White River Narrows, Shooting Gallery, and Mt. Irish. Visitor responses were positive to new amenities (vault toilet and camp sites) constructed to protect cultural resources at Mt. Irish. A new visitor brochure (shown below) and map were produced for the area in March 2024. In July, recreation focus group meetings were held in Caliente Field Office, where the monument staff is co-located.

Basin and Range National Monument

U.S. Department of the Interior
Bureau of Land Management

Basin and Range NATIONAL MONUMENT

Established in 2015, Basin and Range National Monument protects and preserves a valuable part of the nation's natural and cultural heritage. The 704,000-acre (2,850-square-kilometer) monument showcases iconic western landscapes, geology, ecology, and cultural history. Located more than 2 hours from any major population center, visitors to the monument can experience remoteness and space on a grand scale. They can see rugged mountains, explore vast valleys, and witness clear examples of cultural history that connect us to priceless parts of our national heritage.

HOME FOR MANY CULTURES

People have lived in the area of Basin and Range National Monument for at least the last 13,000 years. Cultural artifacts preserved in the monument give visitors a glimpse into the lives of the indigenous cultures, and historical and modern inhabitants of the Basin and Range region. They help us understand how landscapes shape past, present, and future human experiences.

This area was first inhabited by nomadic Paleo-Indian cultures who hunted and foraged for food on the shores of Pleistocene lakes and marshes. As the climate became increasingly warm and dry, foraging groups used the area's springs, caves, and rock shelters. Cultural groups like the Fremont and Virgin Ancestral Puebloans frequented the area, leaving behind their distinctive rock art styles. The Southern Paiute and Western Shoshone tribes consider the area in and around the monument as a part of their ancestral homelands. Your help conserving and protecting this landscape honors the tribes who call this area home.

In the mid-19th century, European settlers moved into the area for mining and ranching. Livestock grazing is a permitted use in the monument. Visitors may see range improvements or livestock.

Coal Valley Lake

Basin and Range National Monument

Las Vegas

Pleistocene lakes of southern Nevada, 16,000 BP

GREAT BASIN NATIONAL MONUMENT timeline

1800-1850: Paleo-Indian cultures (Clovis, Folsom, etc.)

1850-1900: Fremont and Virgin Ancestral Puebloans

1900-1950: Southern Paiute and Western Shoshone

1950-2000: Basin and Range National Monument established

2000-2024: Basin and Range National Monument

Partnerships

BLM began a new partnership with Southern Utah University in 2024 to offer a practicum to undergraduate students studying Outdoor Recreation. The practicum included 30 hours of work by the students within Basin and Range National Monument, learning about visitor use data, trail maintenance, environmental review process, and visual resource management. Students helped obscure off-route vehicle tracks in an area not open to motorized travel (shown below). BLM partnered with Friends of Basin and Range, U.S. Geological Survey, Nevada Department of Wildlife, College of Southern Nevada, Nevada Division of Natural Heritage, National Park Service, Conservation Lands Foundation, Desert Research Institute, and Eastern Nevada Landscape Coalition in 2024. Volunteer hours totaled 971 hours from 60 volunteers in 2024. Volunteers participated in the BatBlitz, National Public Lands Day sign installation project, monitoring cultural sites through the Nevada Site Steward Program, monitoring wilderness and recreation sites, removing abandoned mine markers, and removing graffiti.



Science

One of the cultural research projects in 2024 analyzed starch granules from bedrock milling features and ground stone artifacts (shown below) in the Mt. Irish Range. The project, conducted by G2 Archaeology and the Natural History Museum of Utah, gathered field data, including starch residues, vegetation descriptions, and grinding surface morphology to investigate prehistoric settlement and subsistence patterns. The project integrated existing obsidian sourcing, rock art studies, and ethnographic data to develop a comprehensive understanding of land use in the area. Additionally, botanical studies expanded to adjacent mountain ranges, such as Timpahute and Golden Gate, to enrich the understanding of available ethnographic plant species.



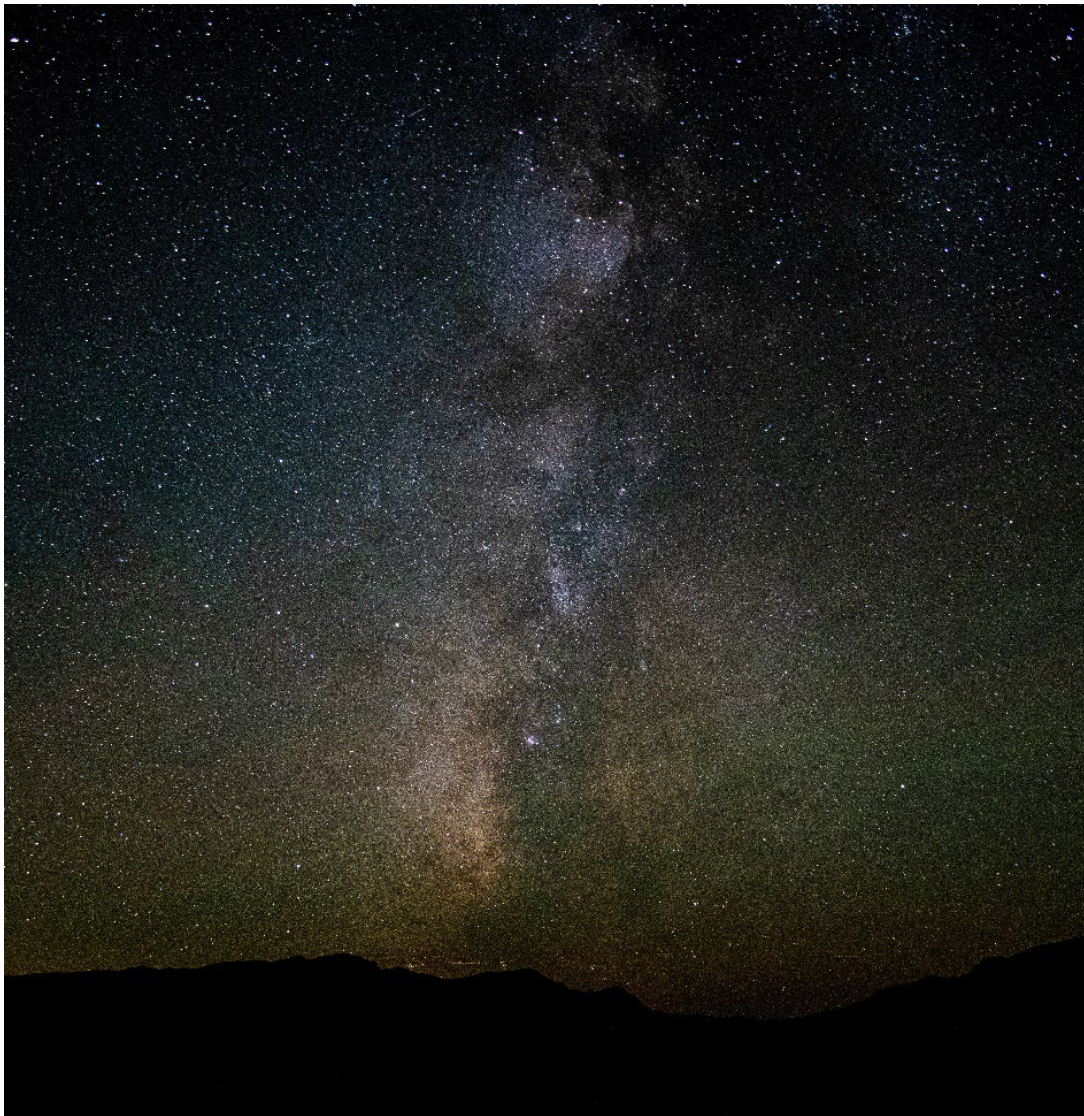
Outreach and Special Events

BLM staff from the monument and Nevada State Office participated in the Government Career Fair at Southern Utah University in Cedar City, Utah in February 2024. Other events included National Public Lands Day volunteer event and a BatBlitz, both in September 2024. Volunteers and members of Friends of Basin and Range presented on night sky lore, nature journaling (pictured below), and night sky photography in the evening after National Public Lands Day. Outreach programs were presented at local elementary, middle, and high schools as well as at Labor Day in the local community of Pioche. Staff from the monument presented at local high school career day activities and trained cultural site stewards at monitoring locations across the monument.



Words from the Staff

From students learning about land management to a new map and brochure, plus visitor programs about night skies, 2024 has been an incredible year. A heartfelt thank you to the folks who volunteer tirelessly and partners who give their time and energy to Basin and Range National Monument. We appreciate all that you do to support this gem of a place with many unique natural, cultural, and geologic resources in rural Nevada. Our small but amazing staff could not accomplish all the wonderful things in this report without your support. In the coming year 2025, we look forward to celebrating the 10-year anniversary of Basin and Range National Monument.





**NATIONAL
CONSERVATION
LANDS**

Basin and Range National Monument

Bureau of Land Management
1400 South Front Street, PO Box 237
Caliente, NV 89008
Phone: 775-726-8100

<https://www.blm.gov/programs/national-conservation-lands/nevada/basin-and-range-national-monument>
<https://www.flickr.com/photos/mypubliclands/albums/72157655302466798/>

Report compiled by:

Alicia Styles (Monument Manager)
Daniel Condie (Rangeland Management Specialist)
Robert (Jake) Hickerson (Archaeologist)

The mention of company names, trade names, or commercial products does not constitute endorsement or recommendation for use by the federal government.