



The Bureau of Land Management's Grazing Program

Lands available for grazing

About **245 million** acres of BLM-managed public lands

155 million acres authorized for grazing

There is no cattle grazing in Alaska, where the BLM manages 71 million acres.

21,000 allotments

Fun fact:

The BLM has 41 grazing permits for bison

and 8 for reindeer!



18,000 permits and leases



12 million animal unit months (AUMs)

1 AUM = 1 month of forage for



The number of livestock permitted does not equal the number of livestock actually grazing on BLM public lands each year because, for example, the same livestock may be permitted for more than one allotment or some allotments may not be used. Also, some allotments will only be used for a limited number of months.

- TAYLOR GRAZING ACT OF 1934
- NATIONAL ENVIRONMENTAL POLICY ACT OF 1969
- ENDANGERED SPECIES ACT OF 1973
- FEDERAL LAND POLICY AND MANAGEMENT ACT OF 1976
- PUBLIC RANGELANDS IMPROVEMENT ACT OF 1978

10 year grazing permit

terms and conditions for healthy rangelands

If permittees meet the terms and conditions over the 10-year period, the BLM will renew the permit.

Economic Contributions

\$2.7 billion total economic output

35,000 total jobs

\$693.6 million total labor income



Fees



Public Rangelands Improvement Act of 1978
contains the formula used to determine the grazing fee

\$1.35 for 2024
per AUM

Grazing Fee Receipts
\$12.9 million

U.S. Treasury

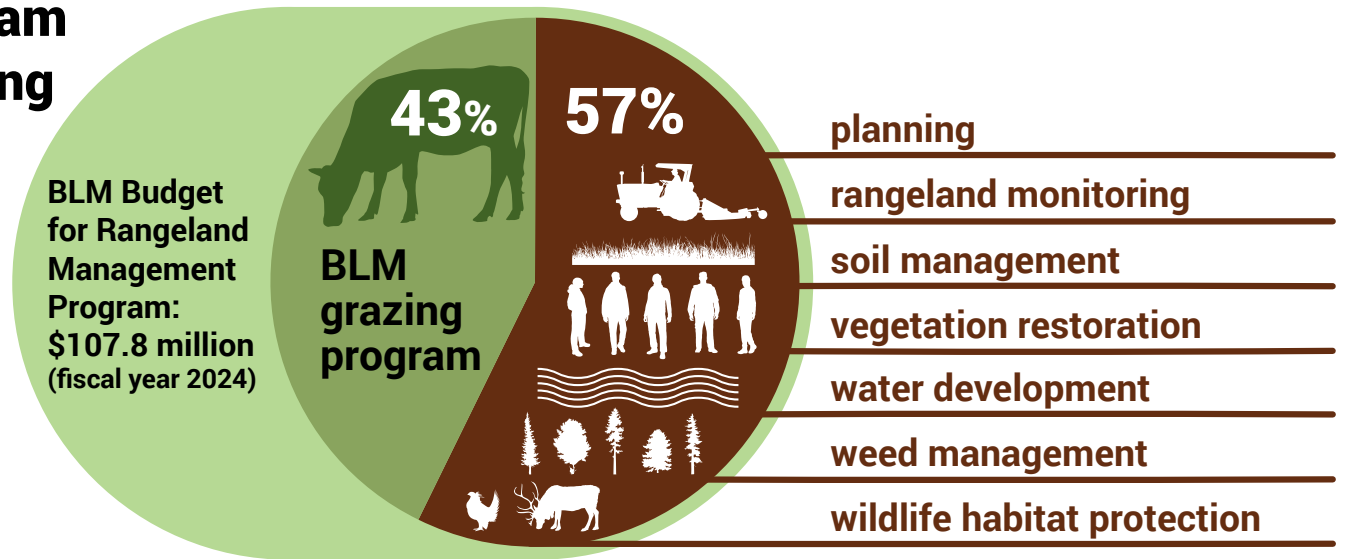


Range Improvements

Counties

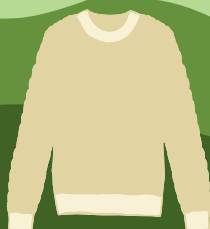


Program Funding



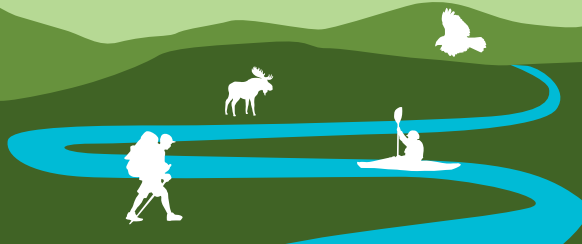
Well-Managed, Healthy Rangelands

Provide meat and fiber



Support national economies

Support healthy watersheds,
recreational opportunities,
and wildlife habitat

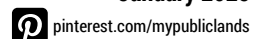
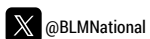


Support rural economies



Preserve open spaces

For more information,
visit www.blm.gov



January 2025