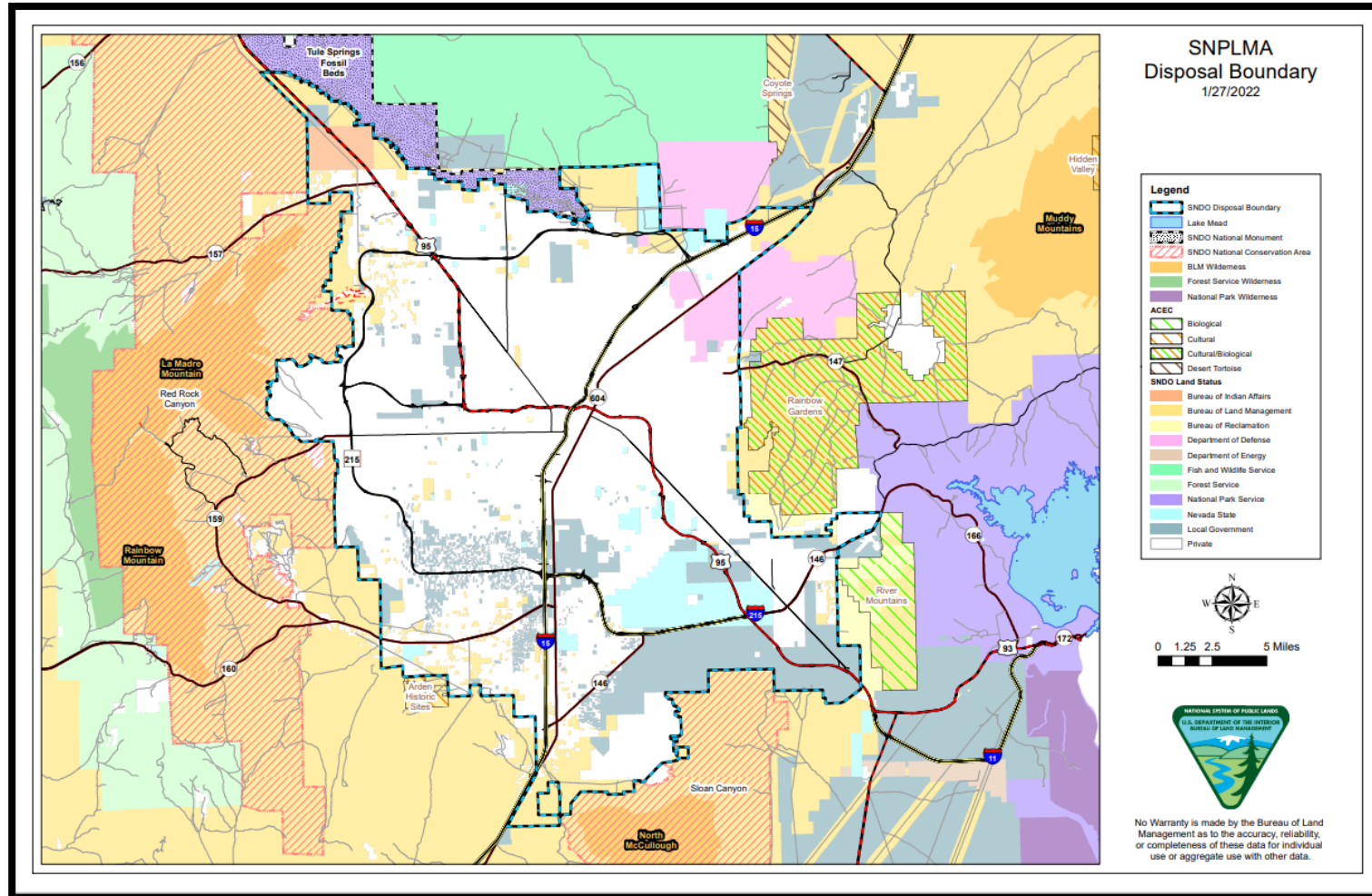




Southern Nevada Public Land Management Act (SNPLMA) Disposal Boundary Maps





Key Facts

Disclaimer: This document is provided for general informational purposes only. While every effort has been made to ensure the information is accurate and up-to-date, we cannot guarantee its completeness or precision. Use of this information is at your own discretion, and we accept no liability for any errors or consequences that may result. For specific inquiries or professional advice, please consult a qualified expert.

Description: The Southern Nevada Public Land Management Act (SNPLMA) Disposal Boundary line refers to a designated area in Southern Nevada where public lands are eligible for disposal through sale or other means to facilitate economic development, environmental restoration, and other public purposes. The act aims to generate funding for various projects, including parks, trails, and conservation efforts, by allowing the sale of federal lands within the specified boundary. It primarily focuses on lands surrounding Las Vegas and neighboring regions, balancing development needs with preservation efforts.

Purpose: The following aerial maps of the SNPLMA boundary line show where land can be disposed within Las Vegas. They help everyone see the specific areas where development is allowed, making it easier to manage and plan the land wisely. This way, we can keep track of where things can be built while also protecting our environment!

Resources: [SNPLMA | Bureau of Land Management](#) (BLM Website with more Information)
[SNPLMA Disposal Boundary 2022_01_27.pdf](#) (Contains Larger Image of the SNPLMA Boundary Line)

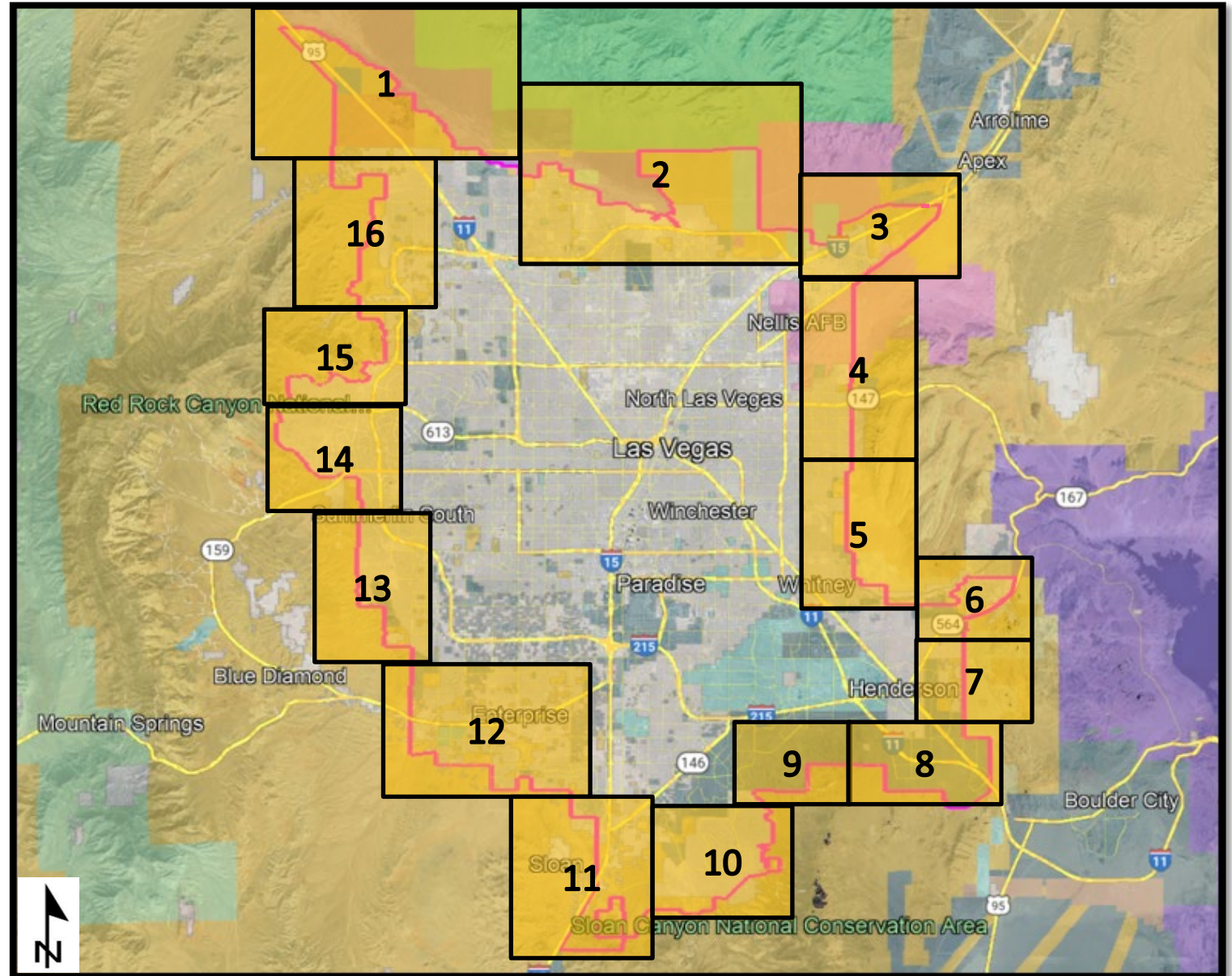
Thank you for reviewing this information—we hope you find it helpful!

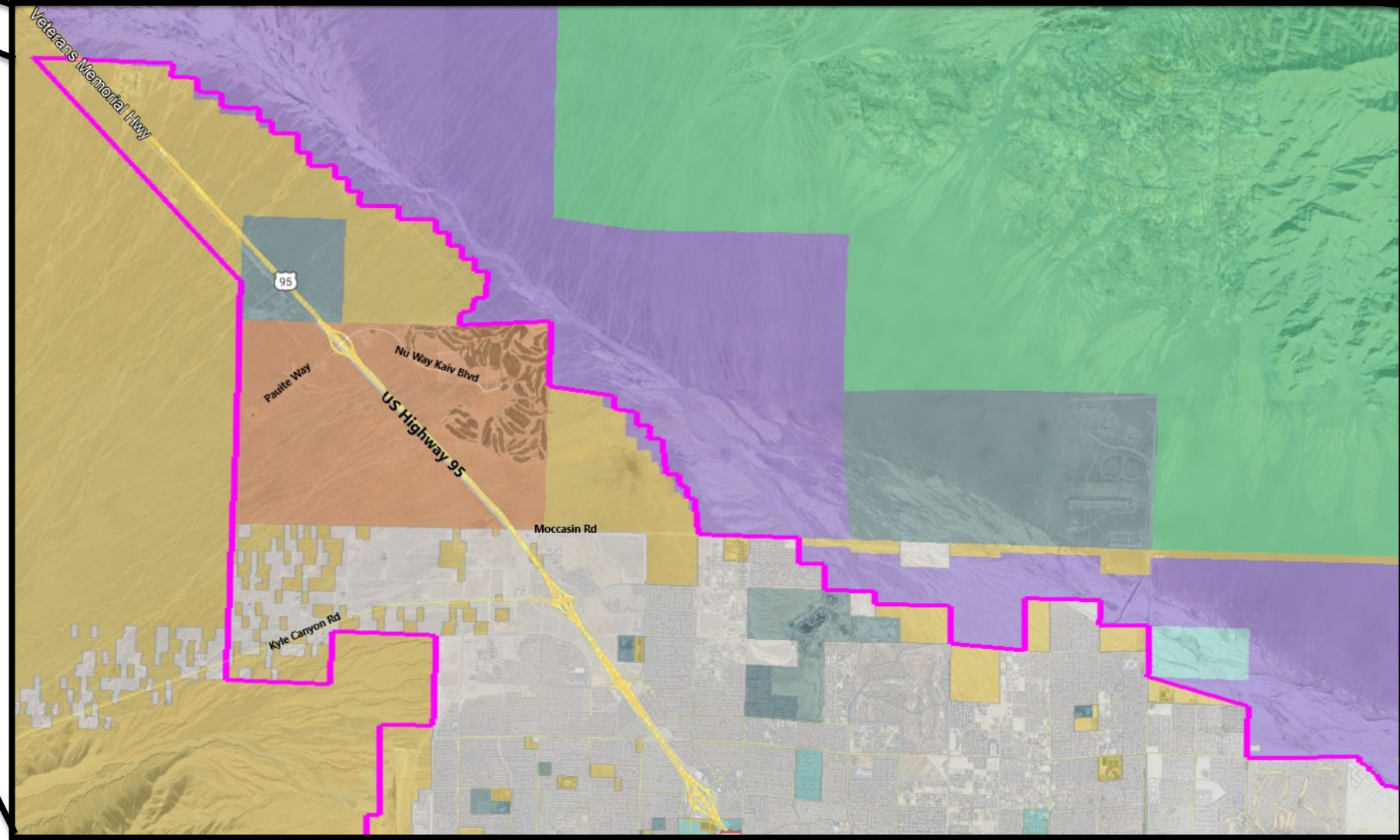
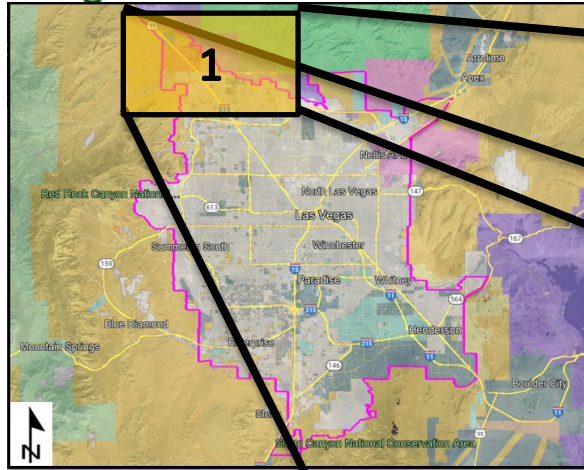


SNPLMA Boundary












MAP LEGEND

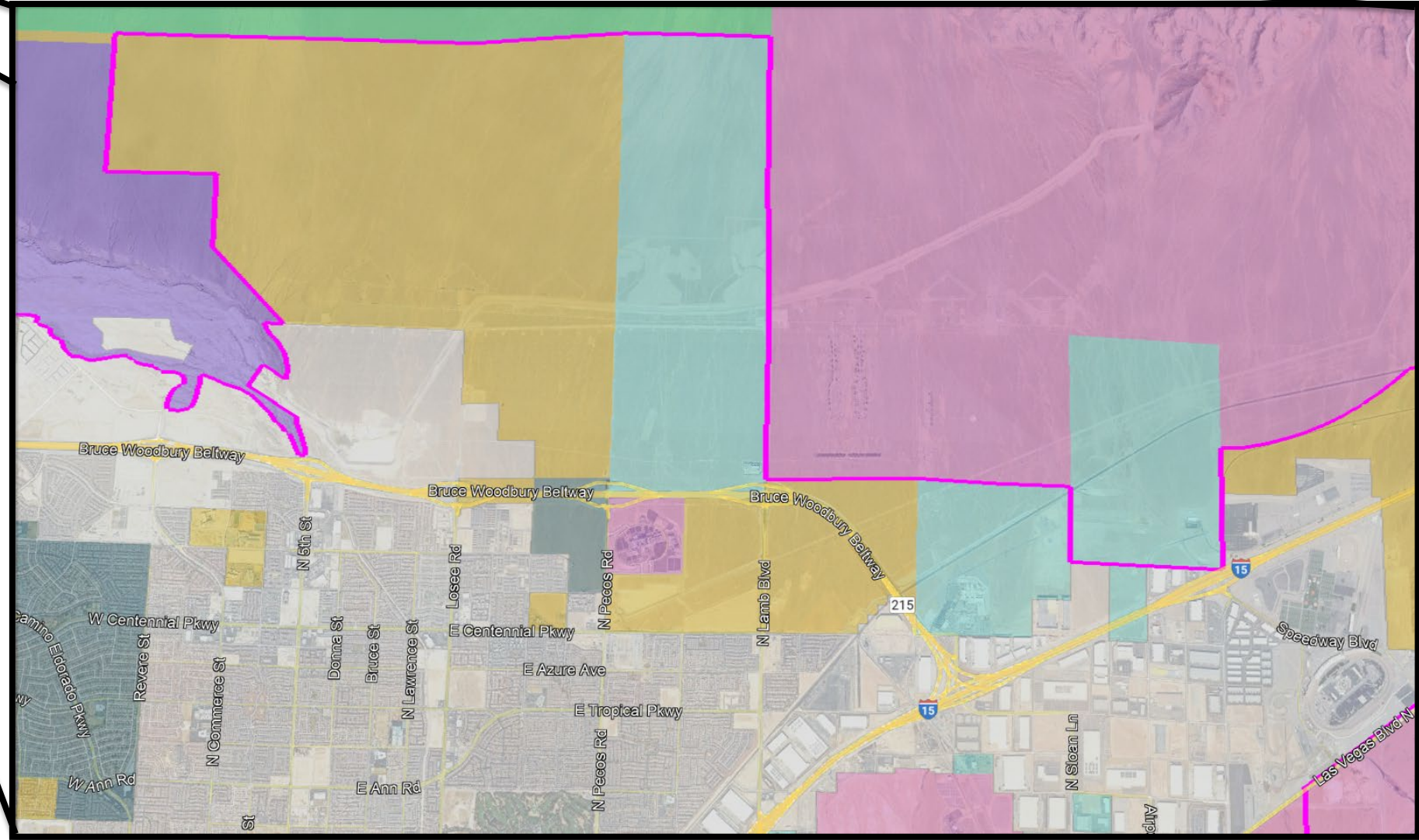
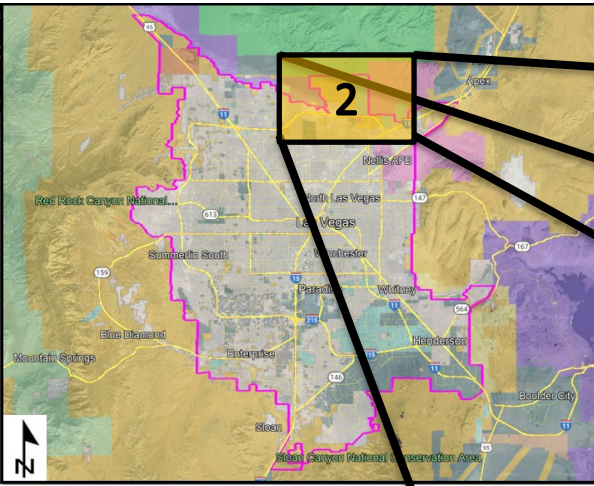
-  SNPLMA Disposal Boundary Line
-  Bureau of Indian Affairs
-  Bureau of Land Management
-  Bureau of Reclamation
-  Department of Defense
-  Department of Energy
-  Fish and Wildlife Service
-  Forest Service
-  Local Government
-  National Park Service
-  Nevada State
-  Private














MAP LEGEND

-  SNPLMA Disposal Boundary Line
-  Bureau of Indian Affairs
-  Bureau of Land Management
-  Bureau of Reclamation
-  Department of Defense
-  Fish and Wildlife Service
-  Forest Service
-  Local Government
-  National Park Service
-  Nevada State
-  Private

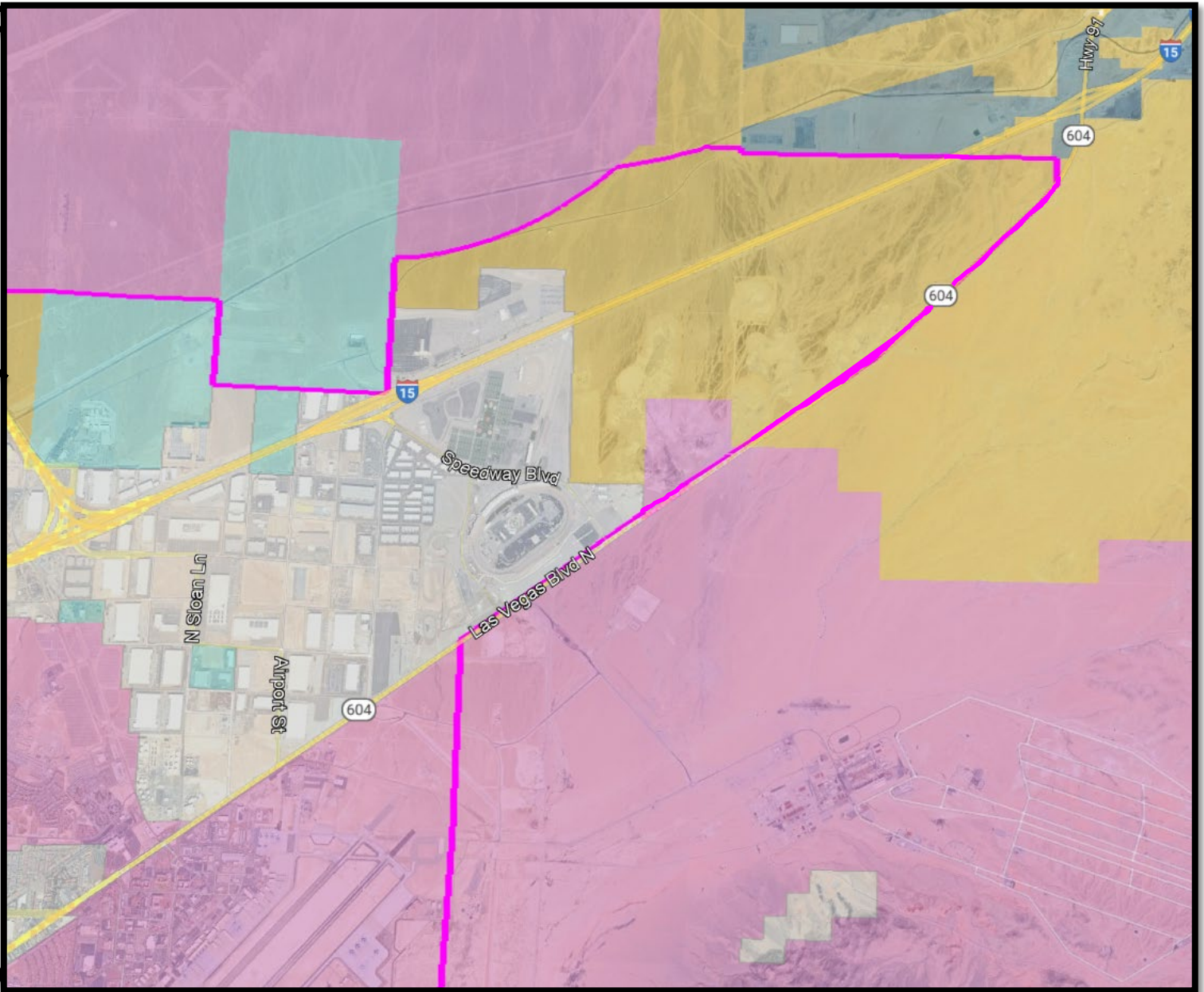
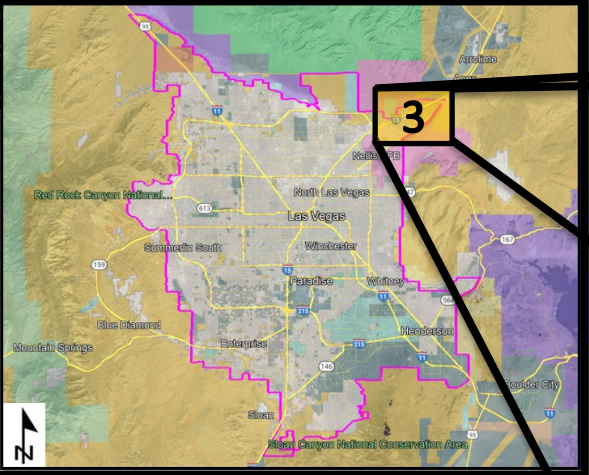


MAP LEGEND

-  SNPLMA Disposal Boundary Line
-  Bureau of Land Management
-  Bureau of Reclamation
-  Department of Defense
-  Fish and Wildlife Service
-  Local Government
-  National Park Service
-  Nevada State
-  Private

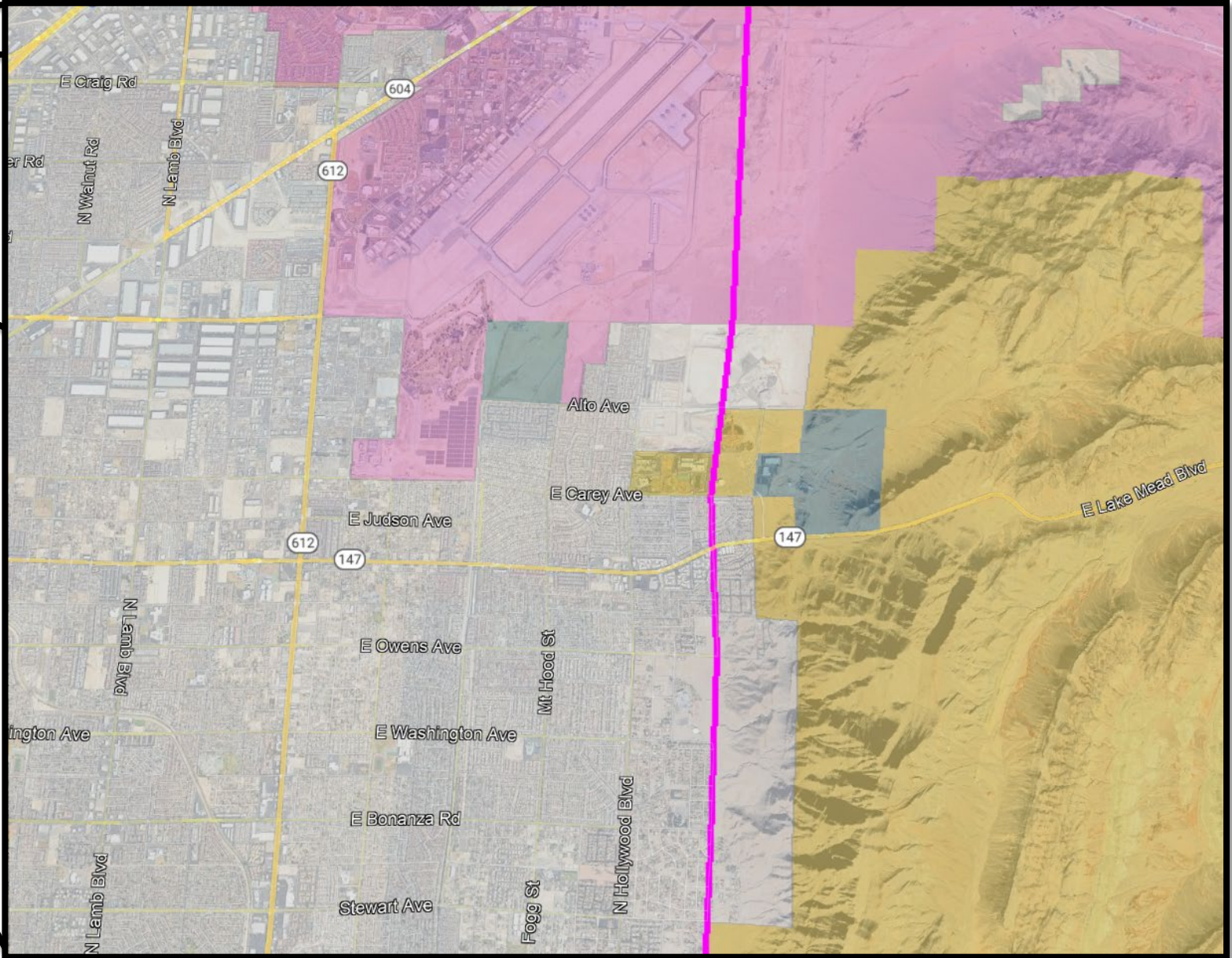
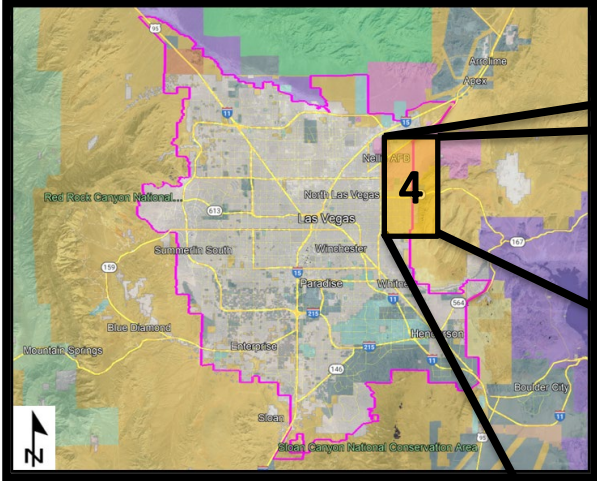


3








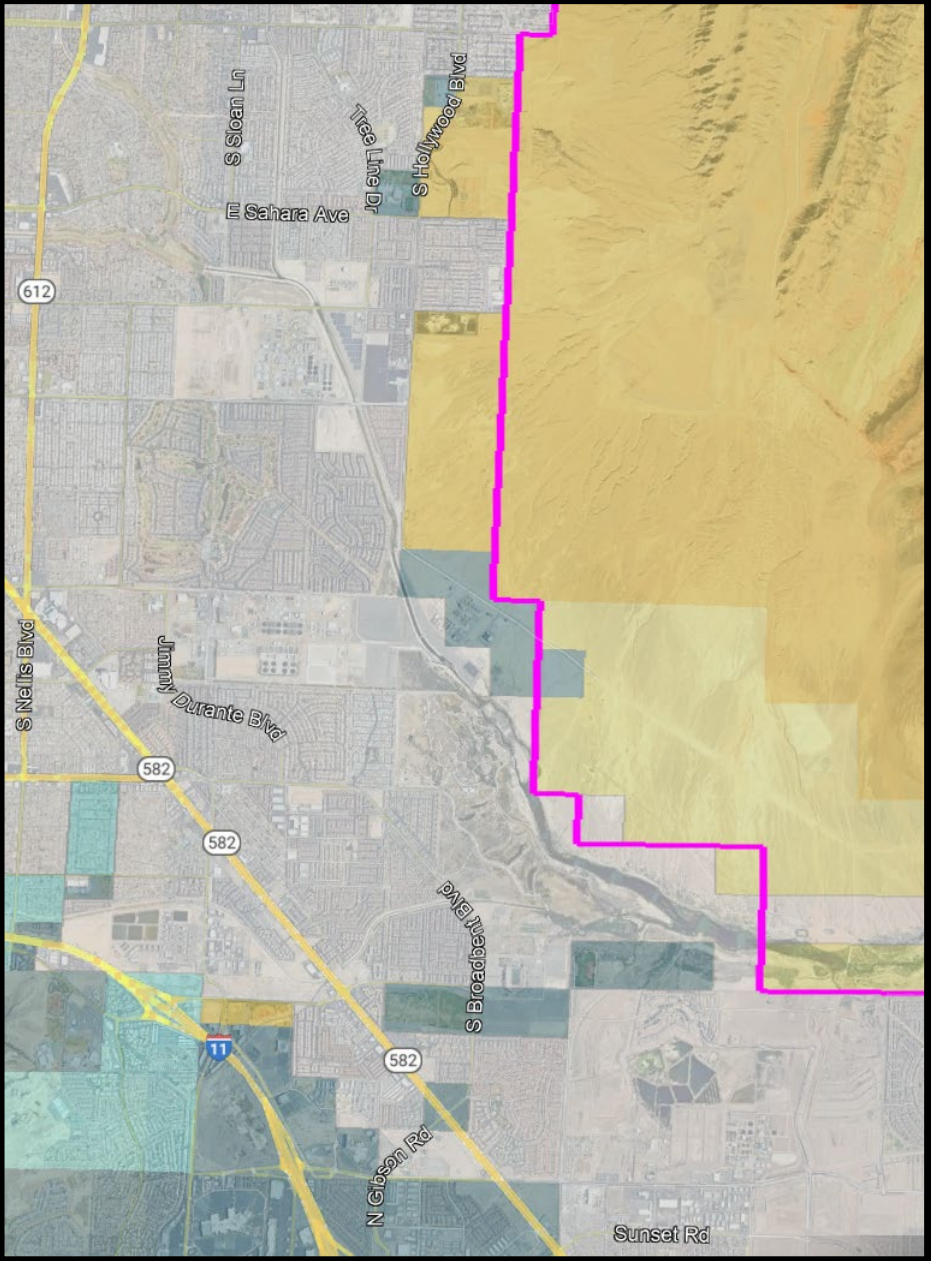
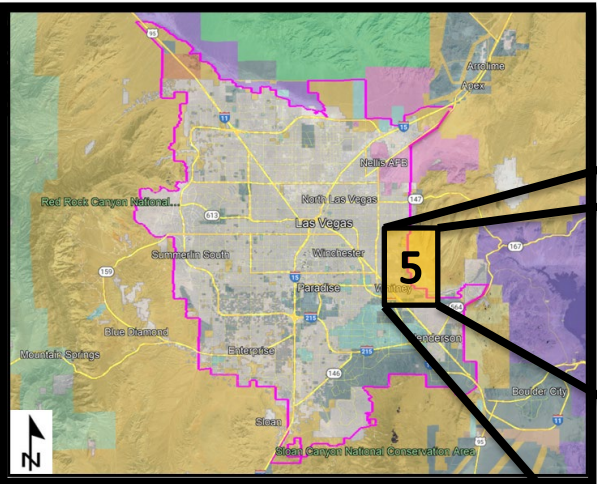
MAP LEGEND

-  SNPLMA Disposal Boundary Line
-  Bureau of Land Management
-  Department of Defense
-  Local Government
-  Nevada State
-  Private









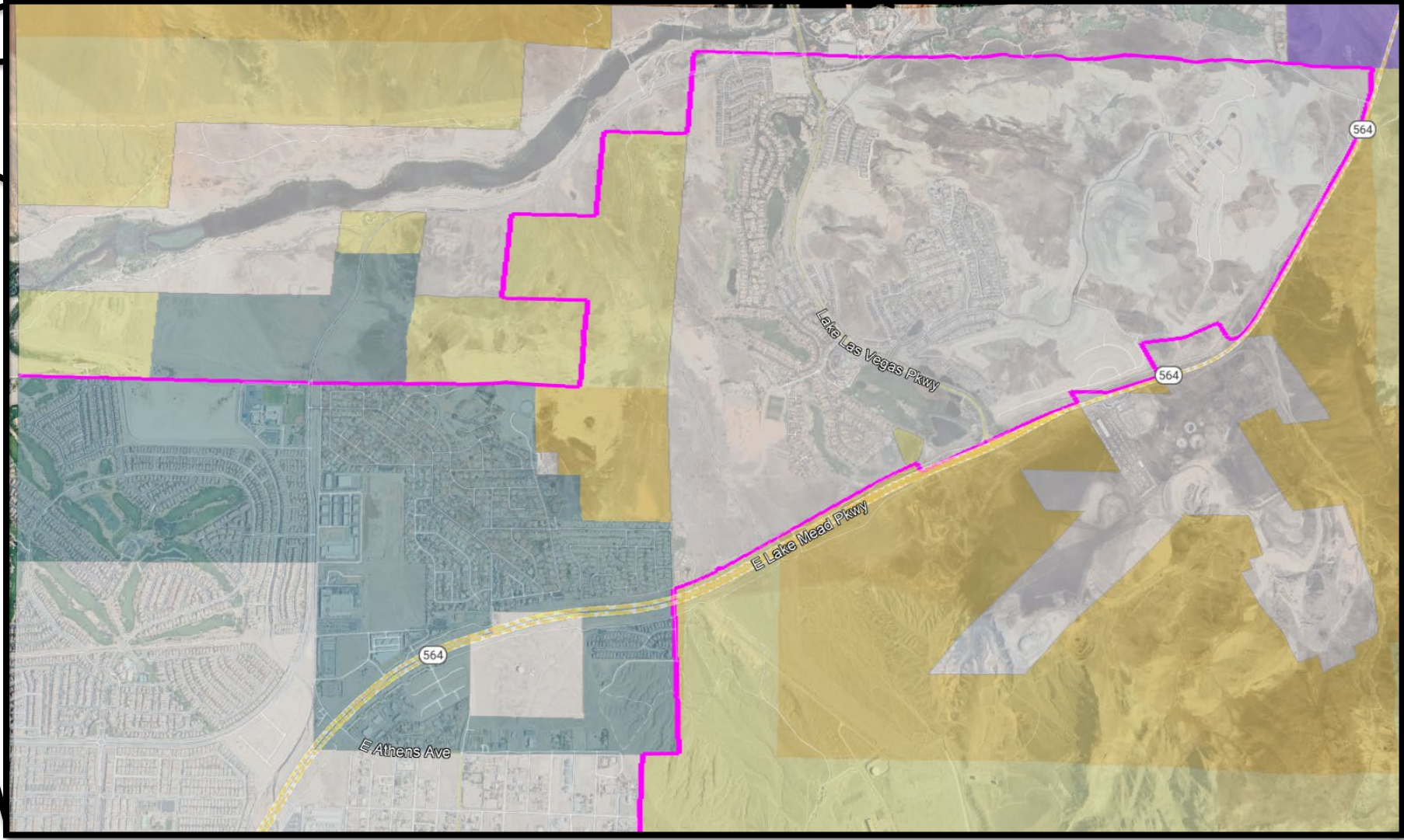
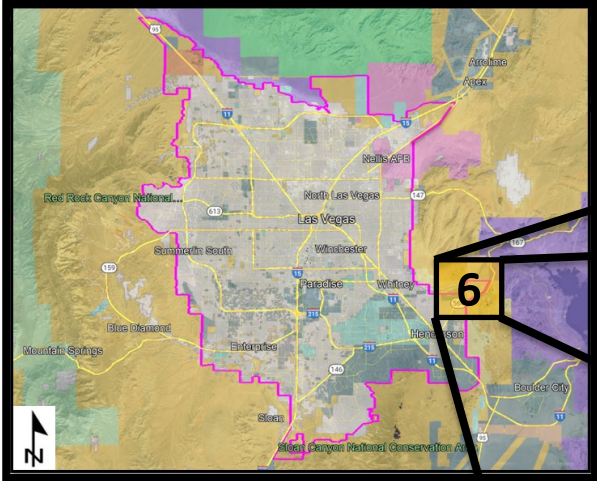
MAP LEGEND

-  SNPLMA Disposal Boundary Line
-  Bureau of Land Management
-  Department of Defense
-  Local Government
-  Private








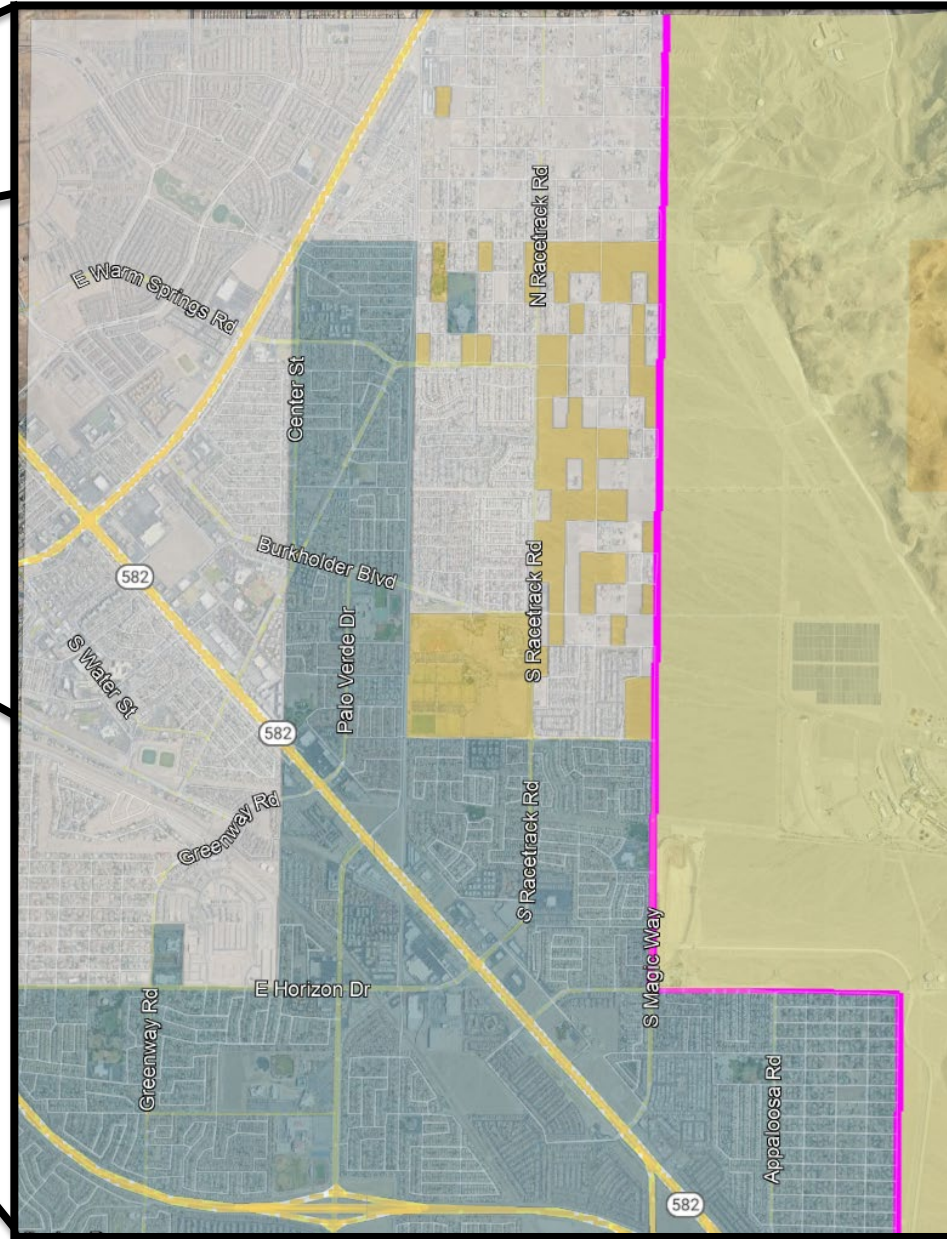
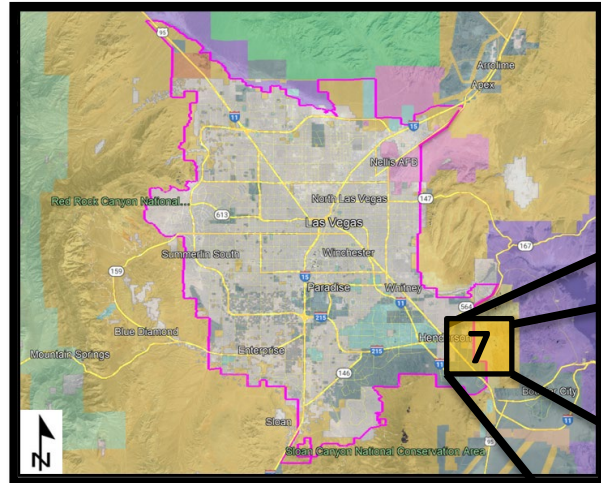
MAP LEGEND

-  SNPLMA Disposal Boundary Line
-  Bureau of Land Management
-  Bureau of Reclamation
-  Local Government
-  Nevada State
-  Private








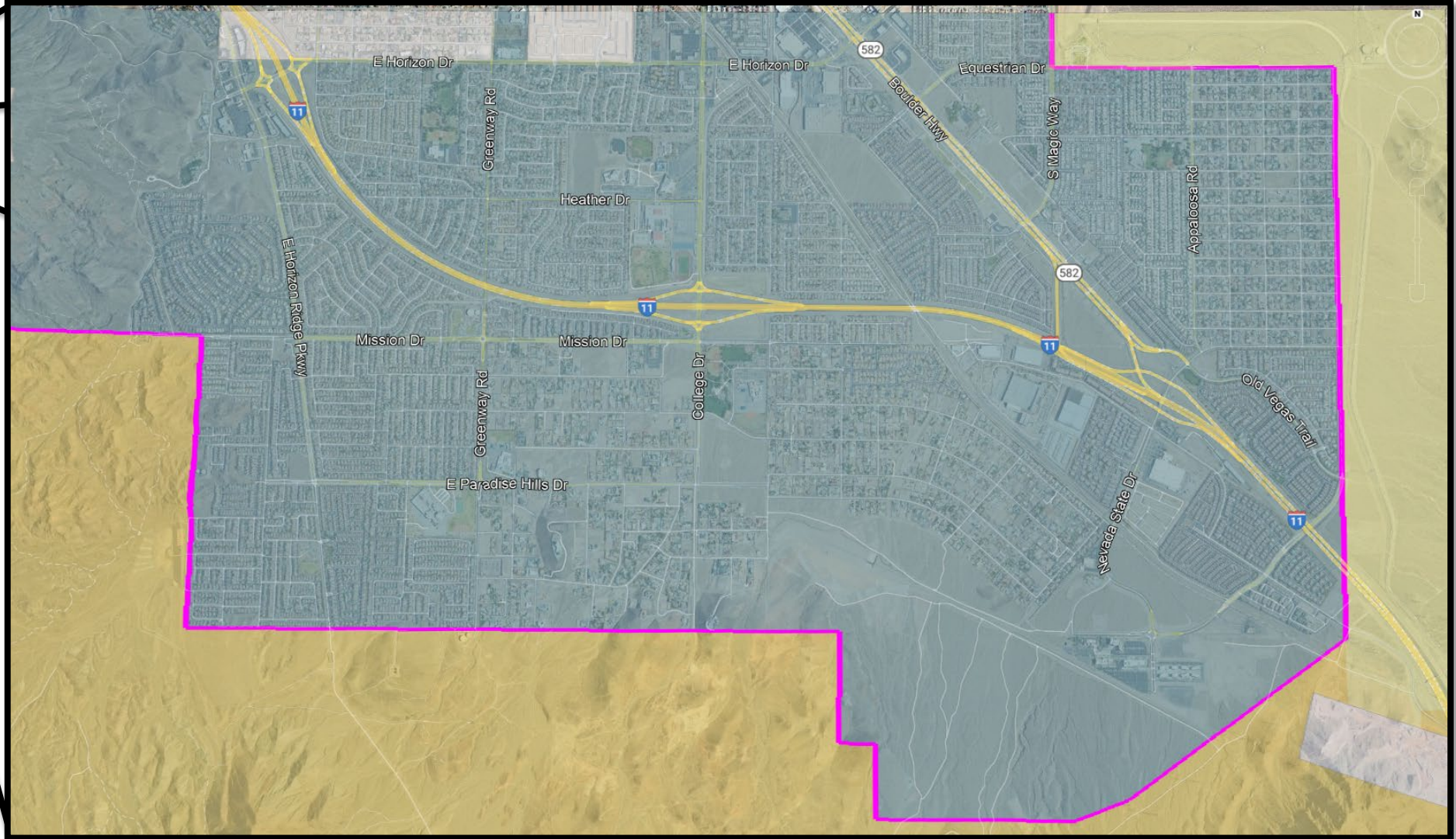
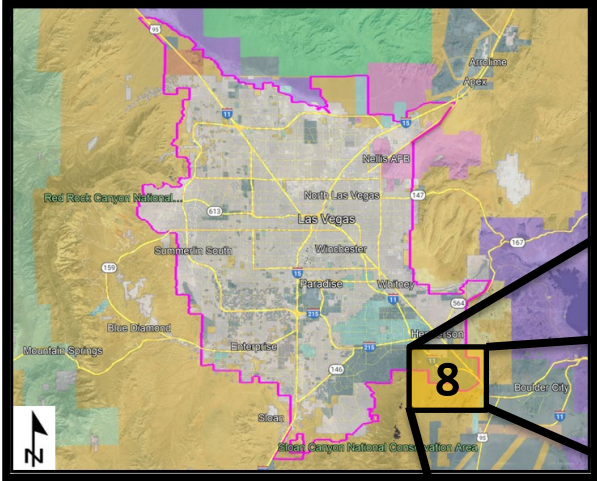
MAP LEGEND

-  SNPLMA Disposal Boundary Line
-  Bureau of Indian Affairs
-  Local Government
-  National Park Service
-  Private








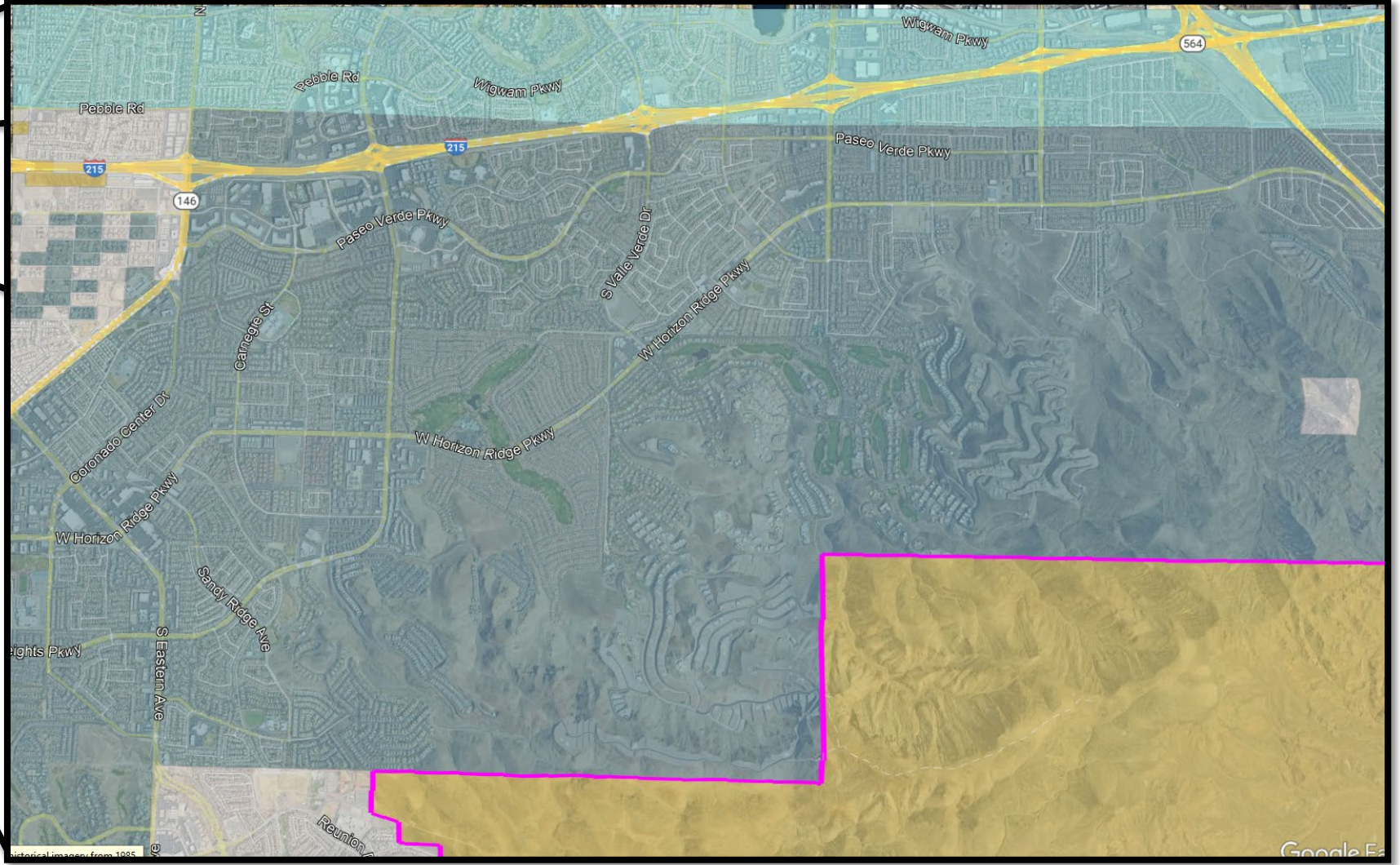
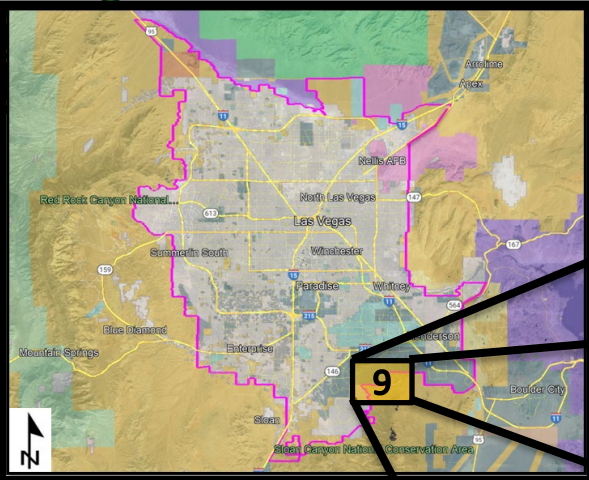
MAP LEGEND

-  SNPLMA Disposal Boundary Line
-  Bureau of Land Management
-  Bureau of Reclamation
-  Local Government
-  Private




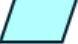



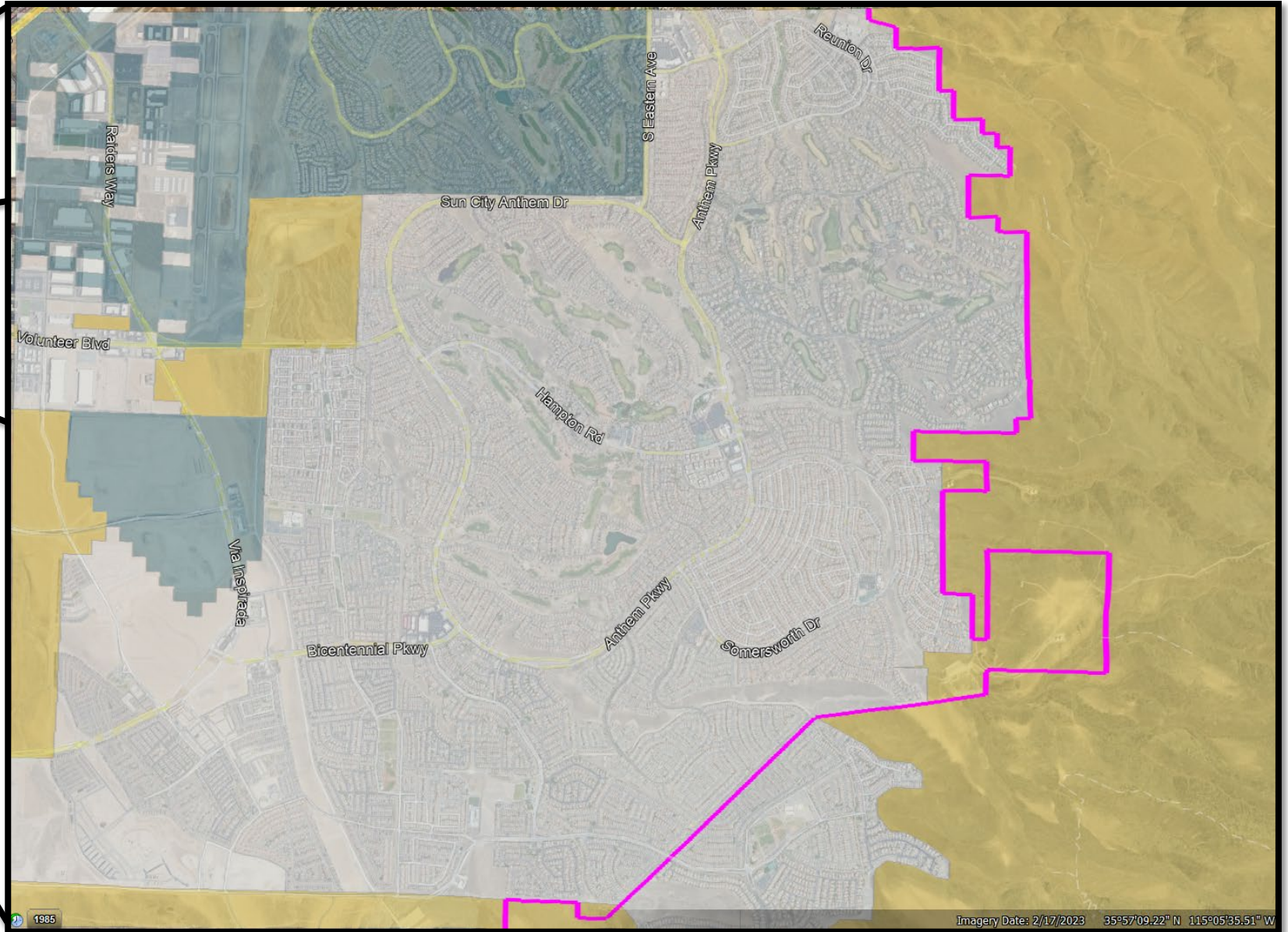
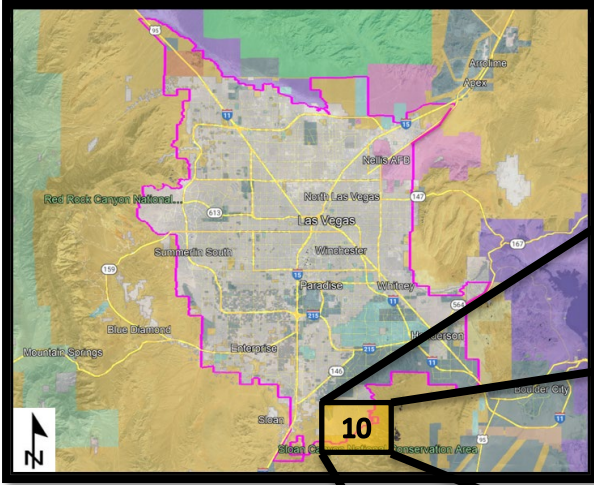
MAP LEGEND

-  SNPLMA Disposal Boundary Line
-  Bureau of Land Management
-  Bureau of Reclamation
-  Local Government
-  Private







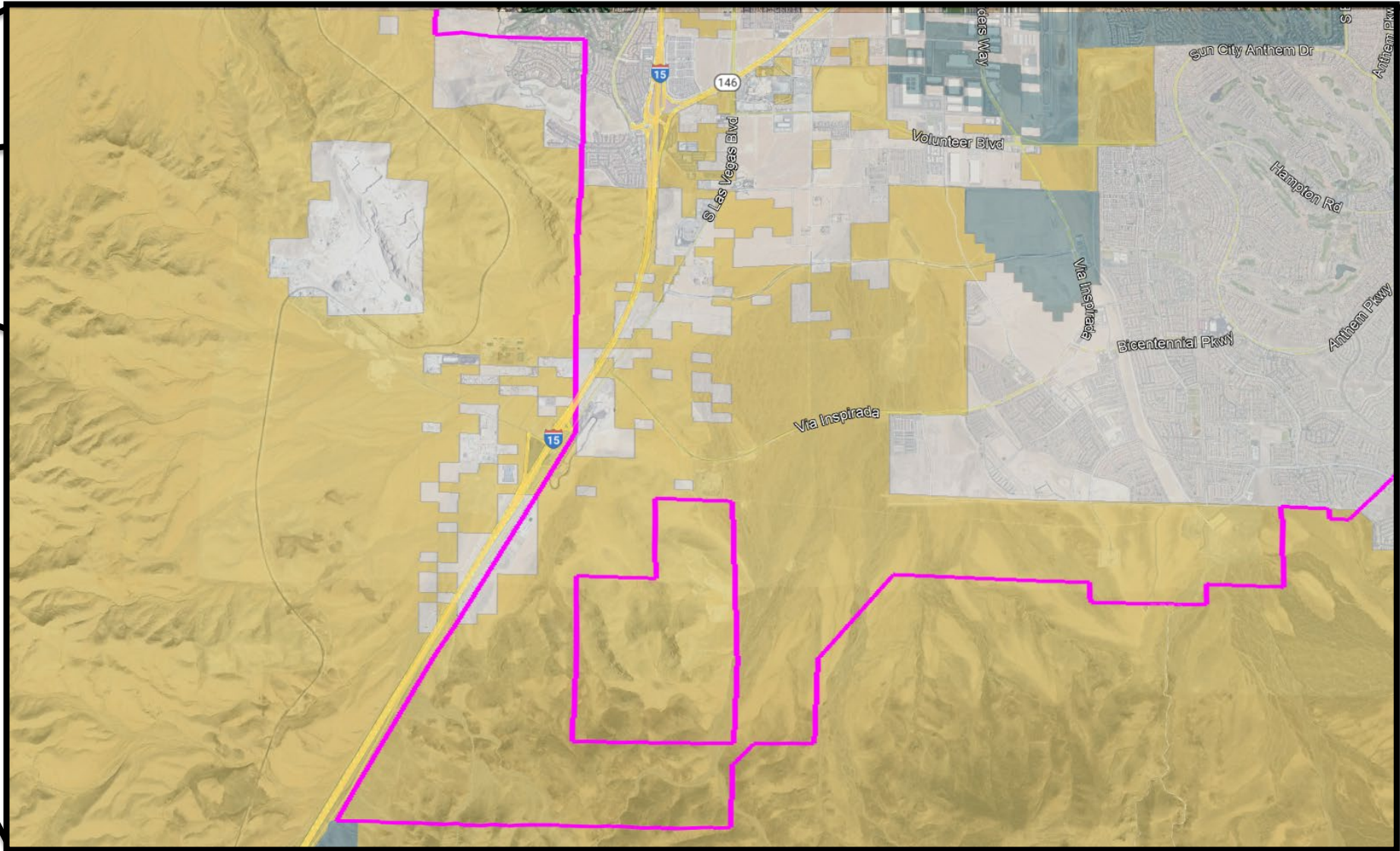
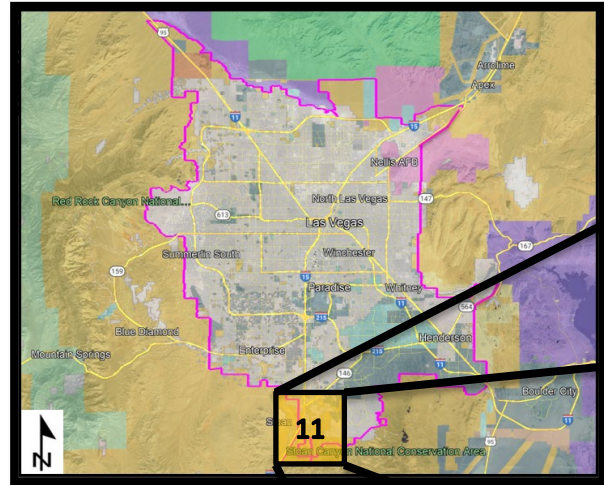
MAP LEGEND

-  SNPLMA Disposal Boundary Line
-  Bureau of Land Management
-  Local Government
-  Nevada State
-  Private







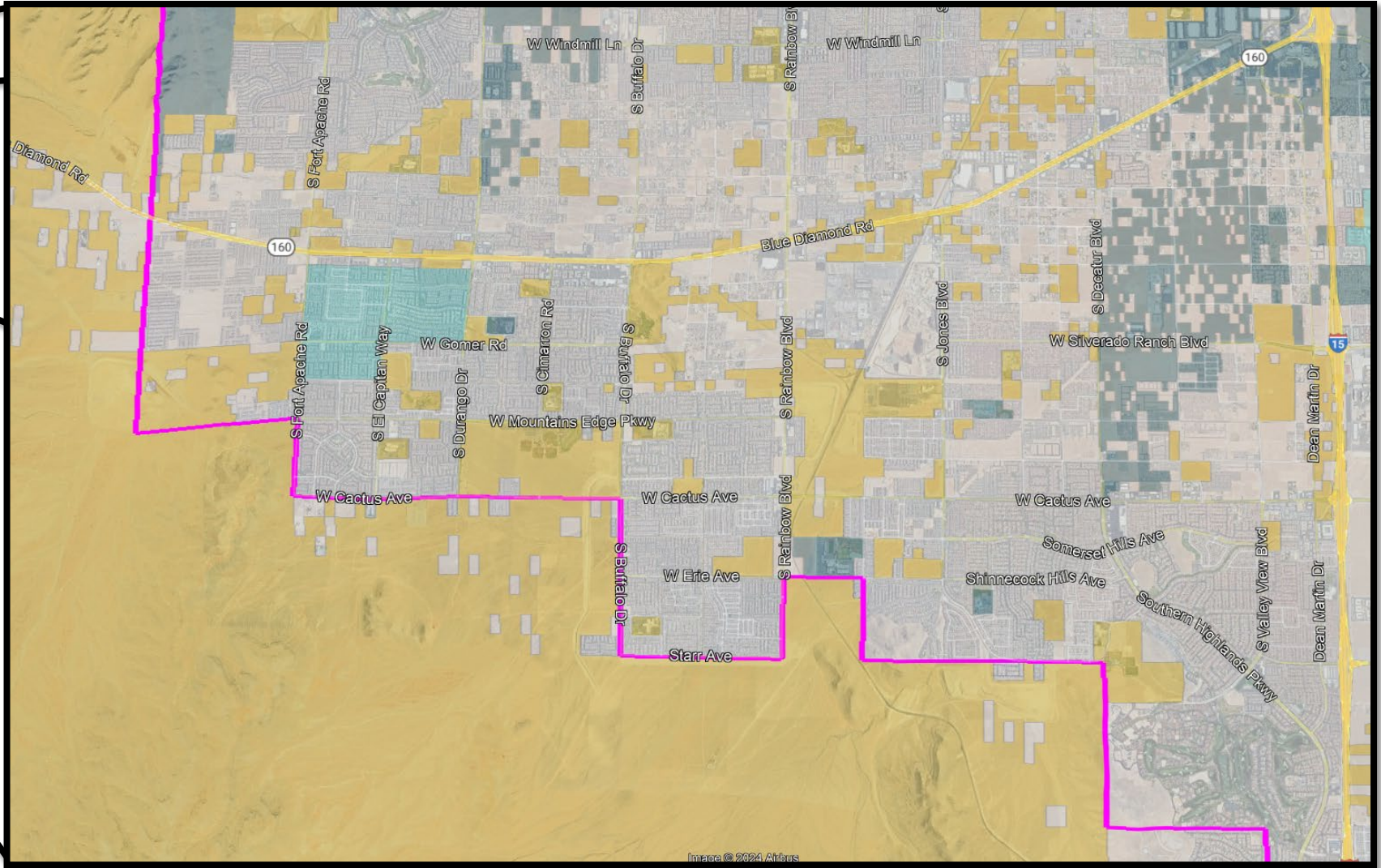
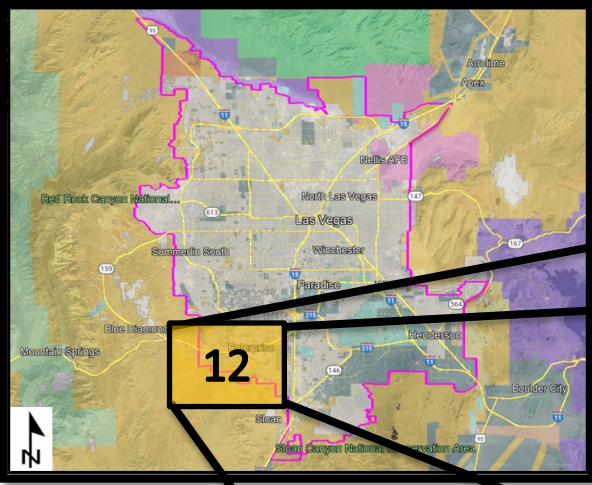
MAP LEGEND

-  SNPLMA Disposal Boundary Line
-  Bureau of Land Management
-  Local Government
-  Private








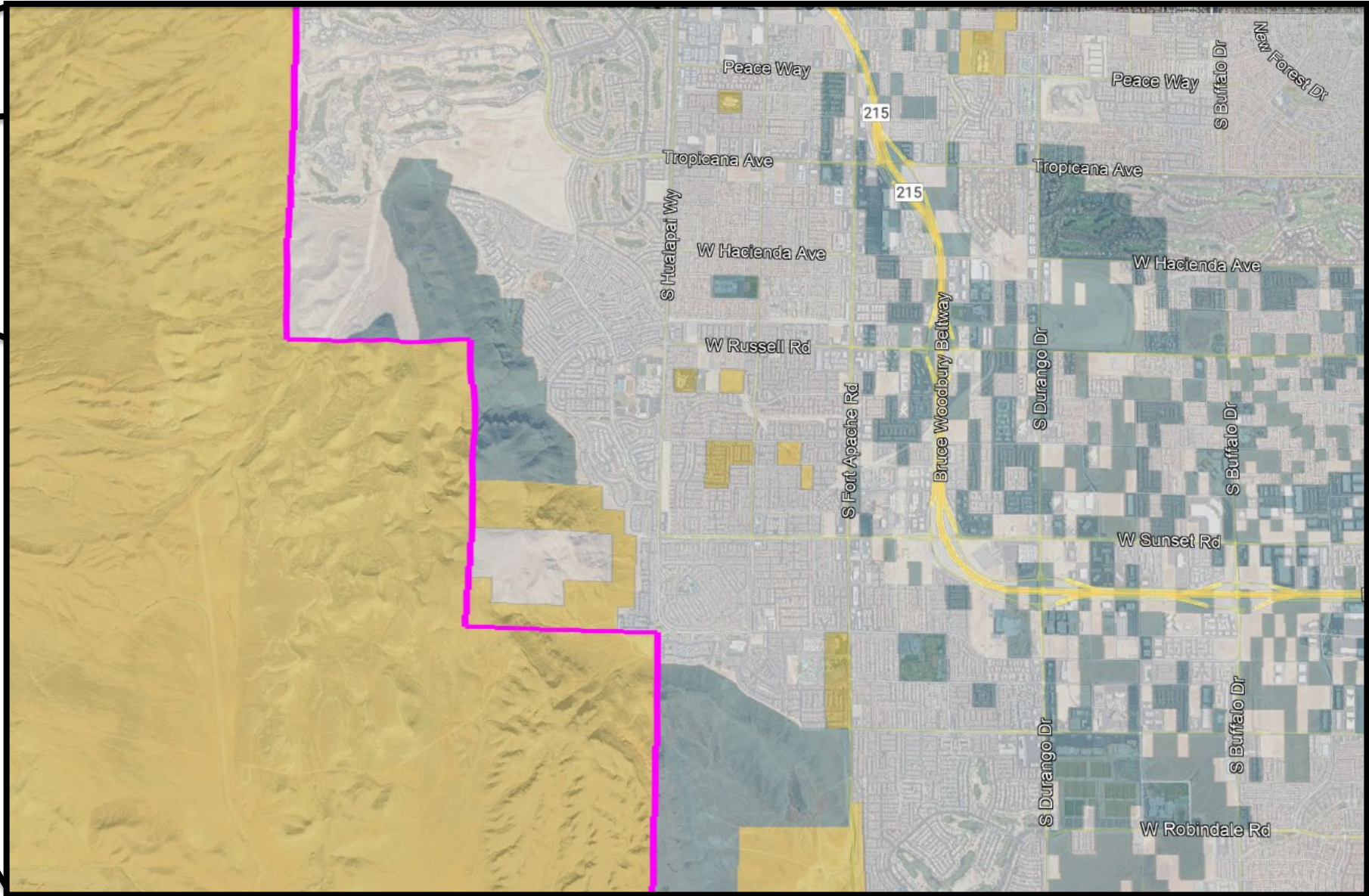
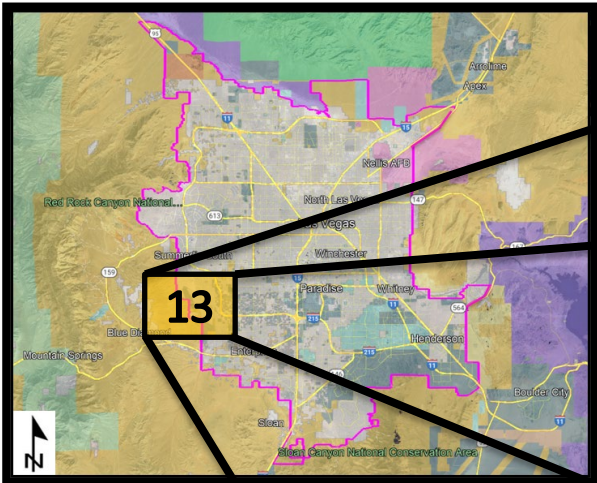
MAP LEGEND

-  SNPLMA Disposal Boundary Line
-  Bureau of Land Management
-  Local Government
-  Private



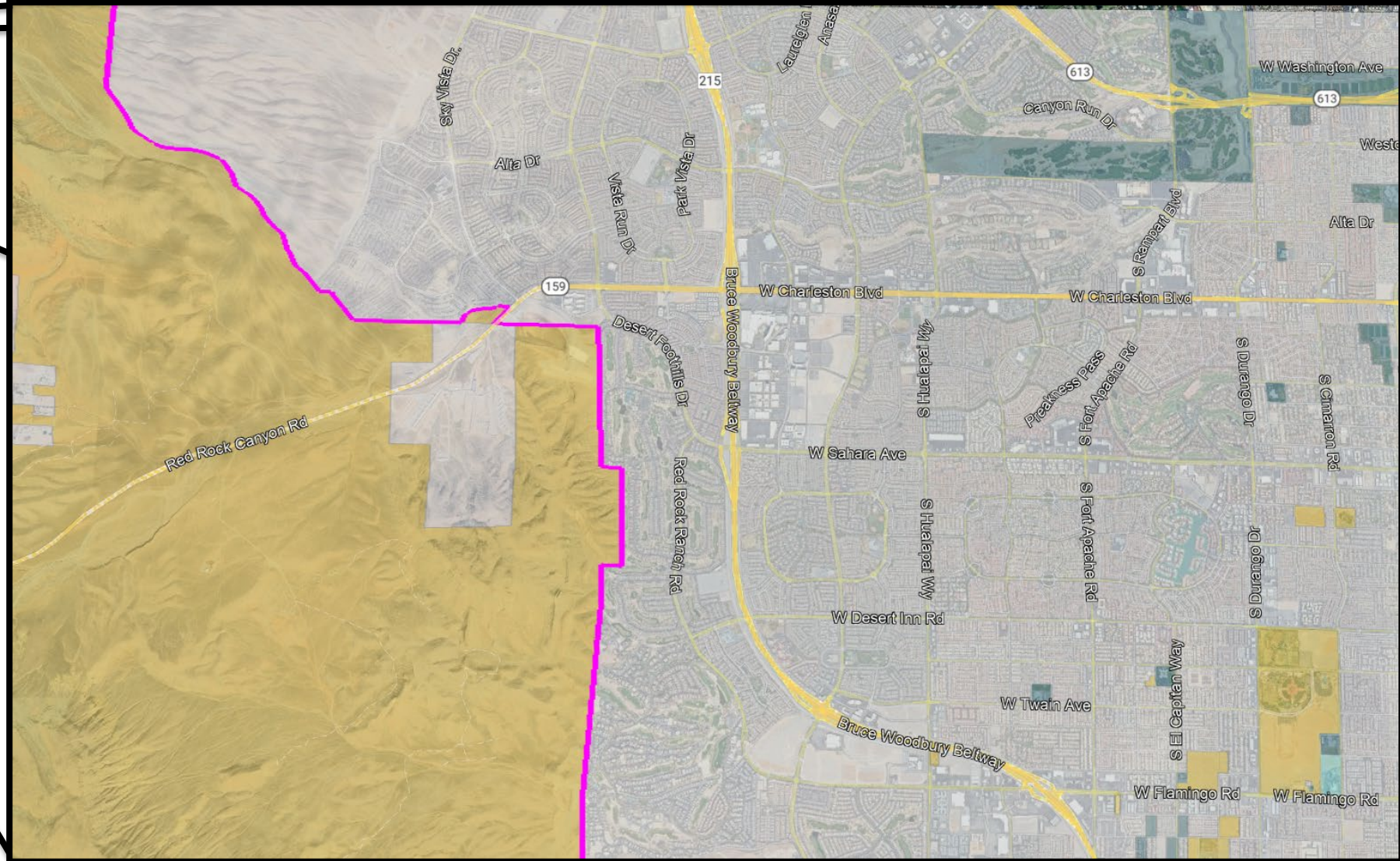
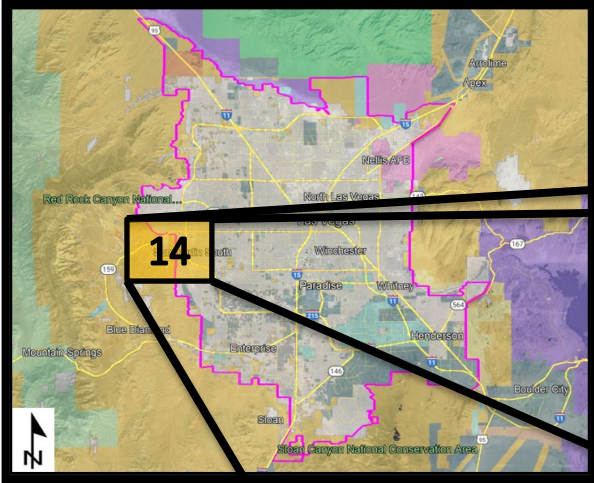
MAP LEGEND

-  SNPLMA Disposal Boundary Line
-  Bureau of Land Management
-  Local Government
-  Nevada State
-  Private








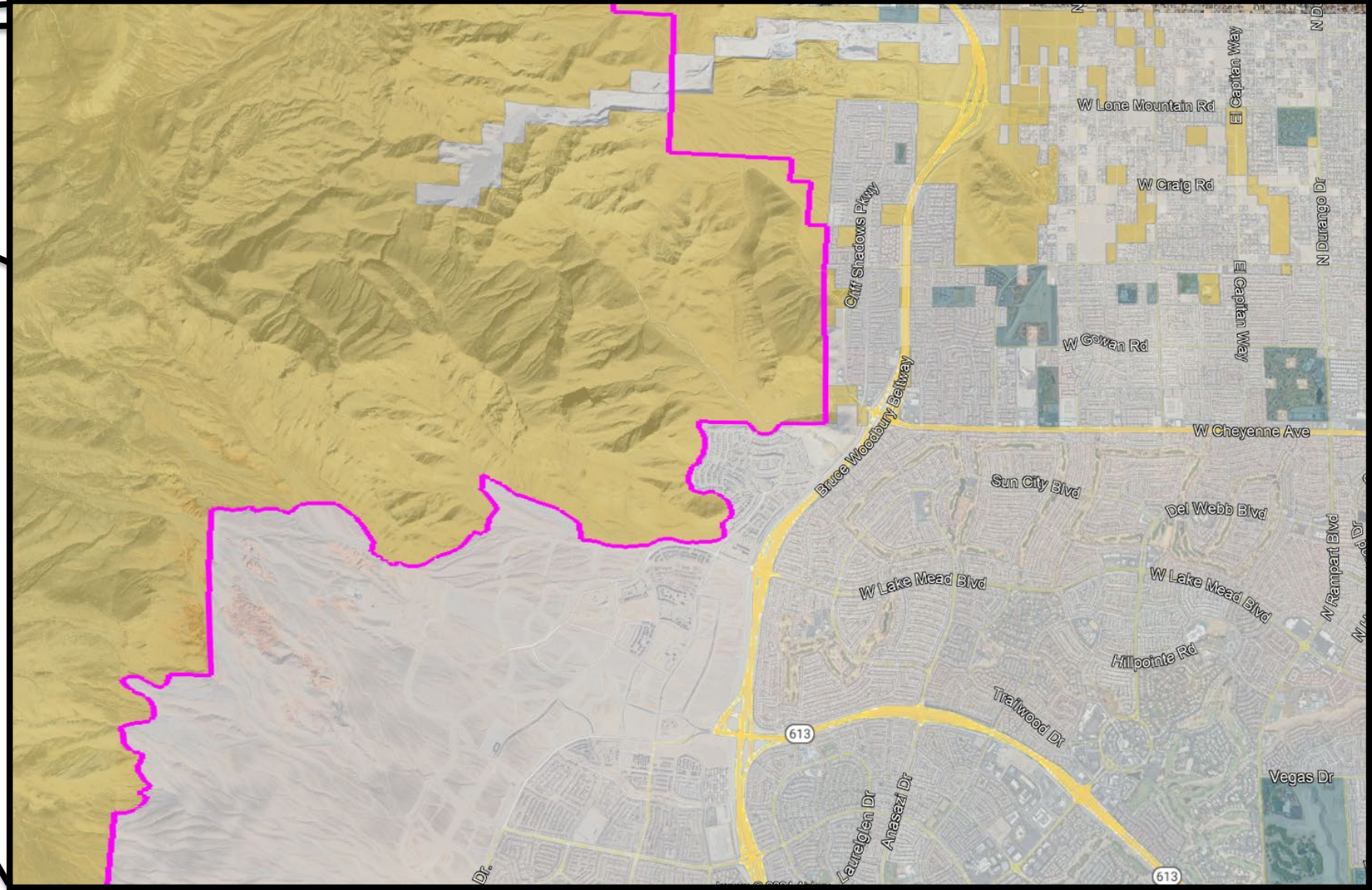
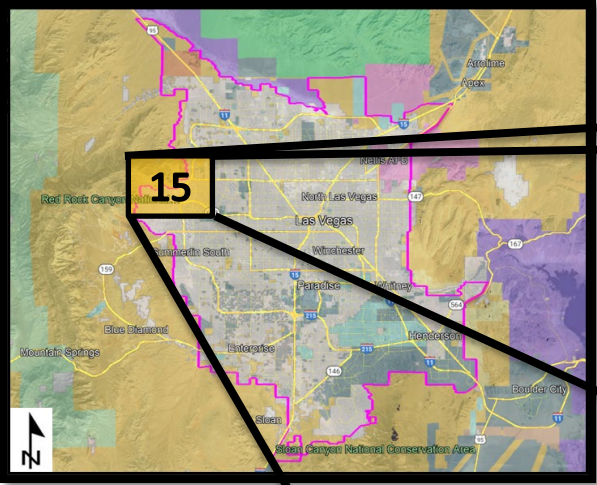
MAP LEGEND

- SNPLMA Disposal Boundary Line
- Bureau of Land Management
- Local Government
- Private







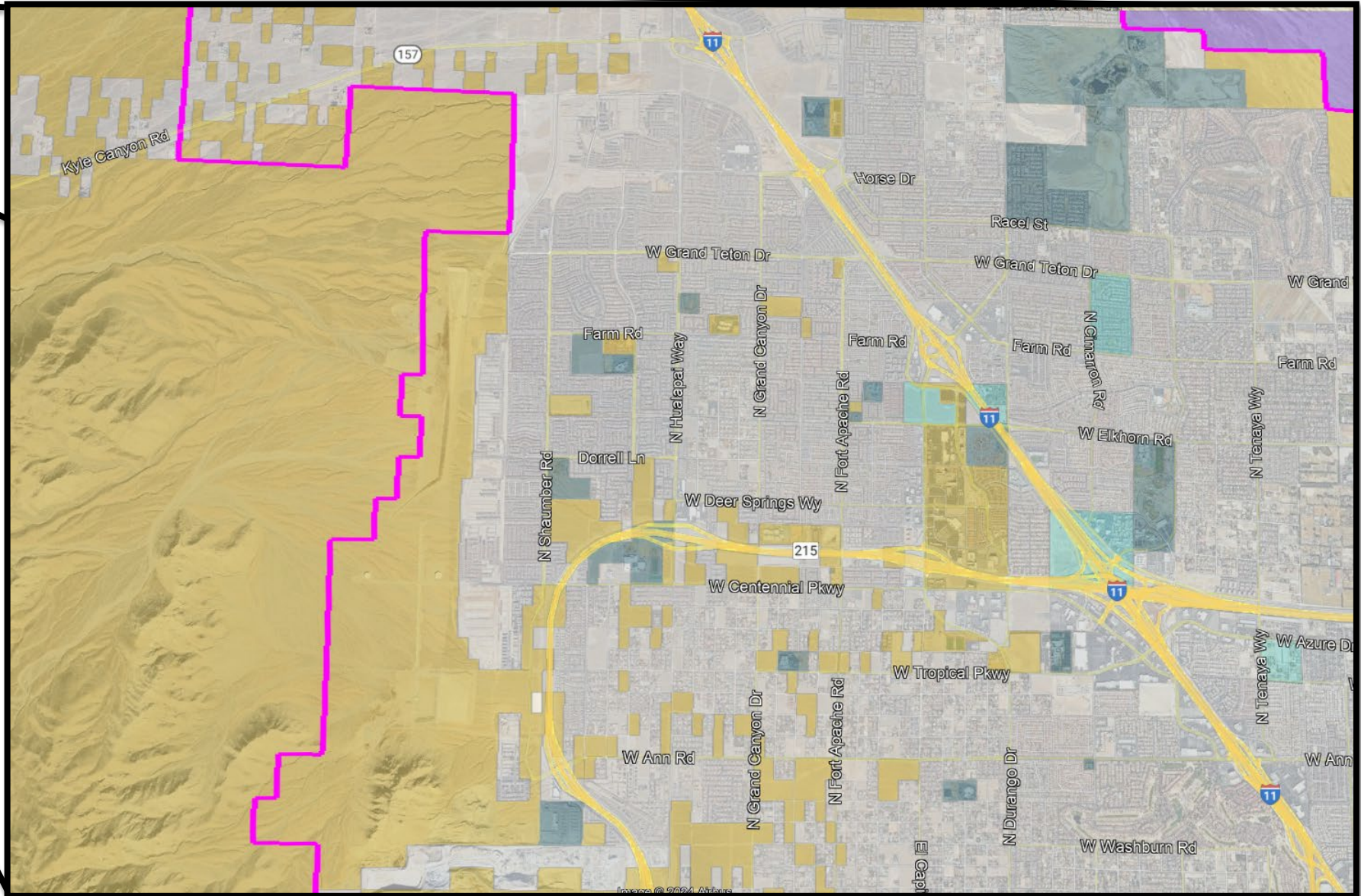
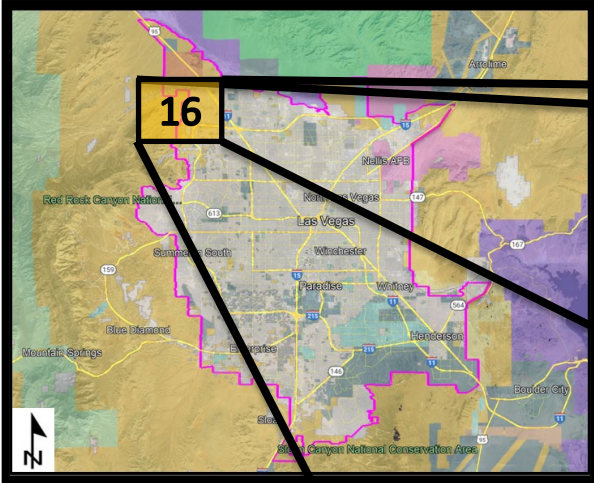
MAP LEGEND

-  SNPLMA Disposal Boundary Line
-  Bureau of Land Management
-  Local Government
-  Nevada State
-  Private









MAP LEGEND

-  SNPLMA Disposal Boundary Line
-  Bureau of Land Management
-  Local Government
-  Private



MAP LEGEND

-  SNPLMA Disposal Boundary Line
-  Bureau of Land Management
-  Local Government
-  National Park Service
-  Nevada State
-  Private



Thank You

Please continue to check our website at <http://www.blm.gov/snplma> for the latest upcoming sales information or call (702)515-5000 and ask to speak with the Realty Specialist currently on Public Contact (PC). We can also be reached by email at BLM_NV_LVFOlands@blm.gov