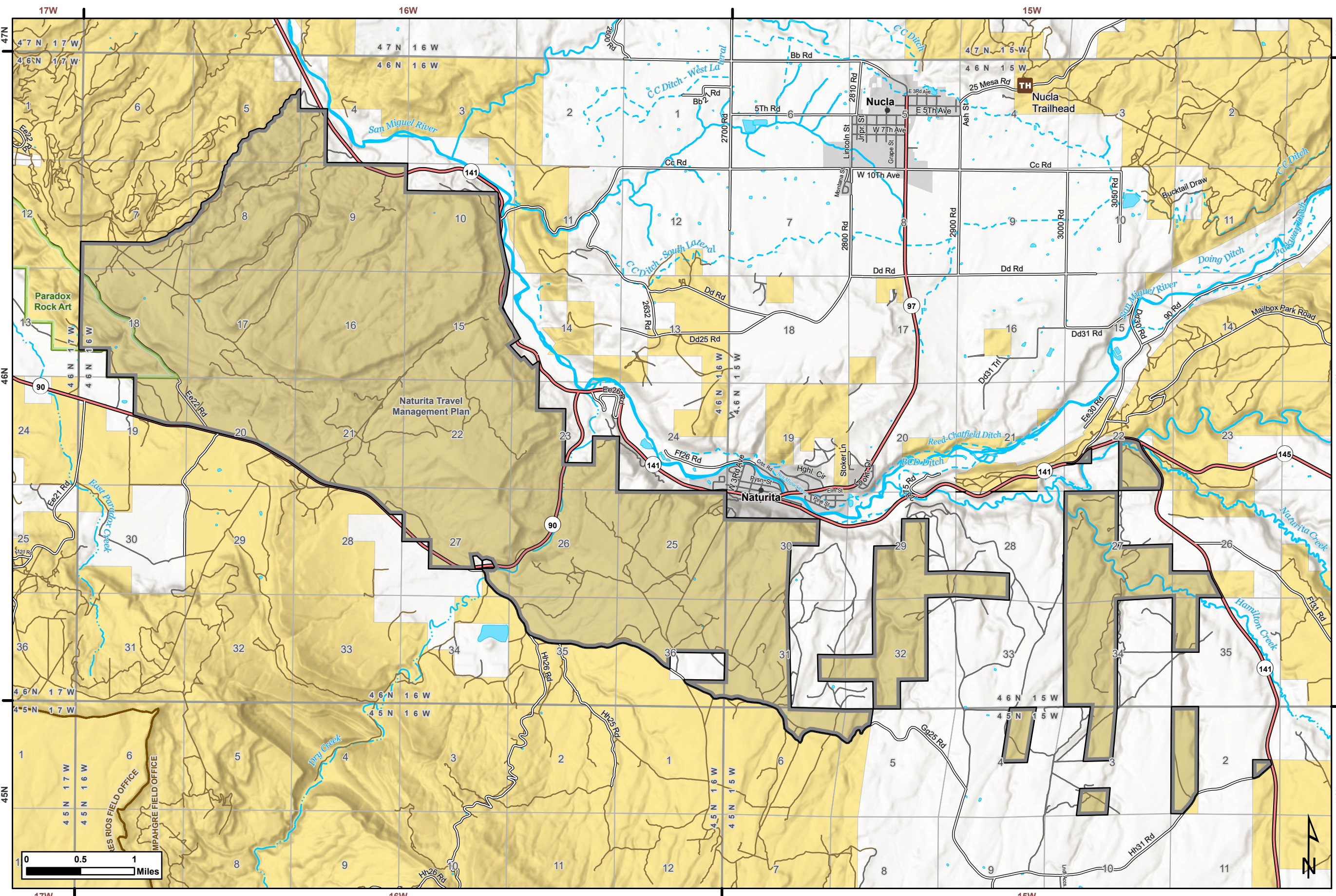




Naturita Travel Management Plan

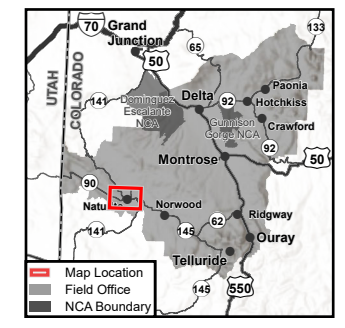
Proposed Project Area

BLM CO | Southwest District
 Uncompahgre Field Office
 2465 S Townsend Ave
 Montrose, CO 81401
 (970) 240-5300



- Naturita Travel Management Plan**
- Naturita TMP Boundary
- BLM Colorado Recreation Points**
- TH Trailhead
- BLM Routes**
- BLM Primitive Road
 - BLM Route (Not Assessed)
- Non-BLM Routes**
- State Highway
 - County Road
 - Local or Private Road
- Areas of Critical Environmental Concern**
- ACEC Boundary
- Cadastral**
- Township and Range
 - Section
- Hydrography**
- Canal / Ditch
 - Stream / River; Perennial
 - Stream / River; Intermittent
- Surface Management**
- Bureau of Land Management
 - Private
 - Incorporated Area

Map Produced by BLM Uncompahgre Field Office Staff
 File: 2025_NaturitaTMP
 Date: 1/21/2025
 Map Scale: 1:55,000
 Coordinate System: NAD 1983 UTM Zone 13N
 CO Reference System: U.S. PLSS NMM / 6th M



DISCLAIMER: No warranty is made by the Bureau of Land Management as to the accuracy, reliability, or completeness of these data for individual use or aggregate use with other data. Decisions in this document only apply to BLM lands. Routes depicted on non-BLM lands are displayed for information purposes only and do not grant access to non-BLM lands.

