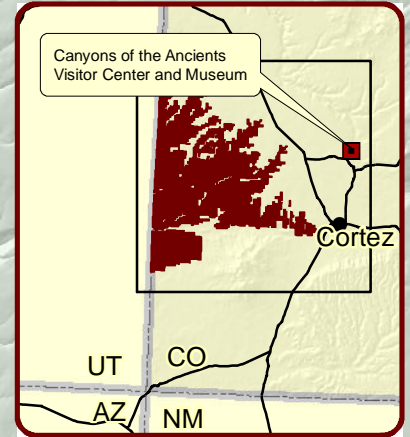
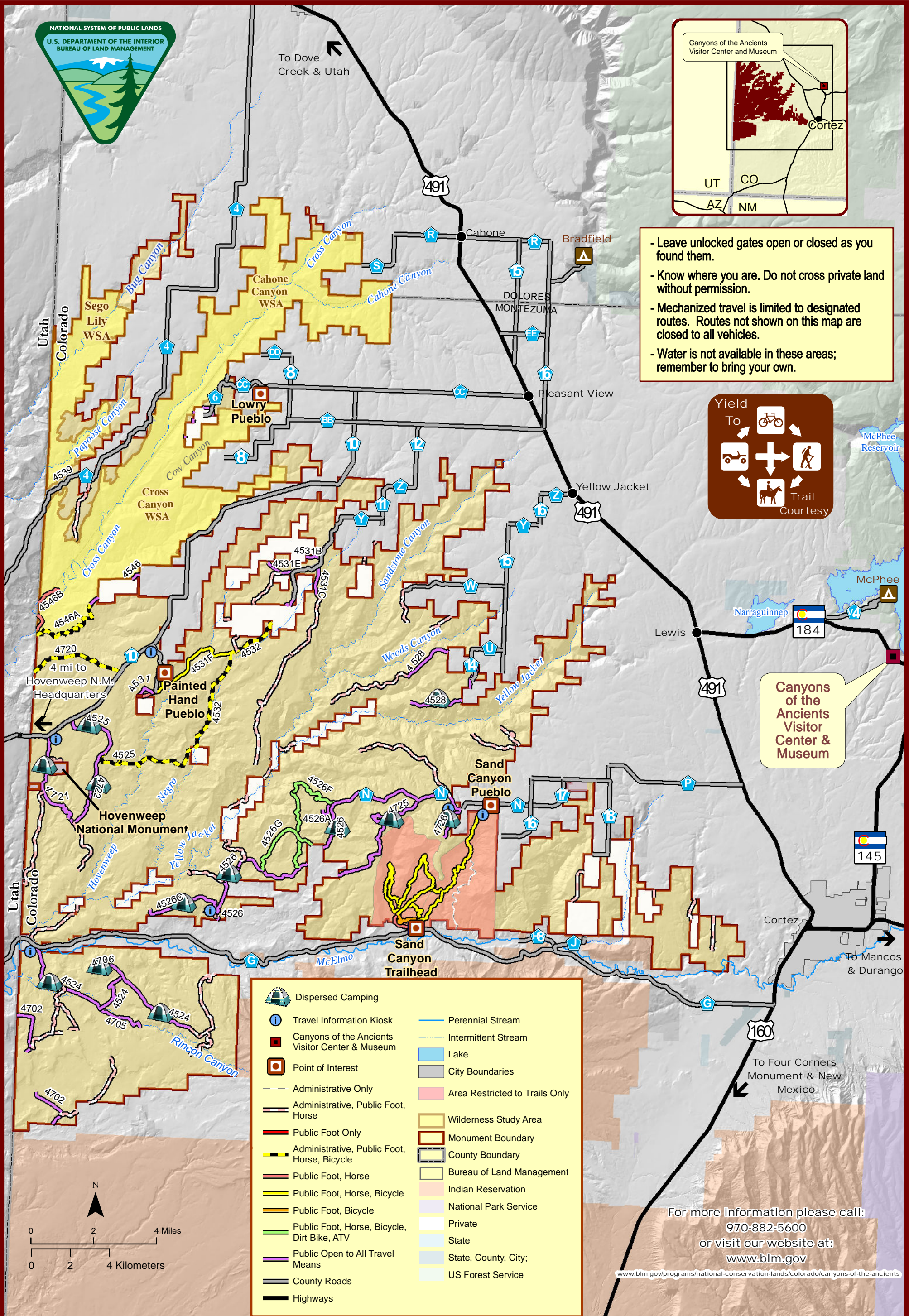


Canyons of the Ancients National Monument

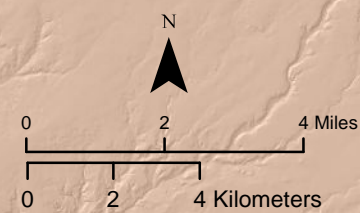


- Leave unlocked gates open or closed as you found them.
- Know where you are. Do not cross private land without permission.
- Mechanized travel is limited to designated routes. Routes not shown on this map are closed to all vehicles.
- Water is not available in these areas; remember to bring your own.



Canyons of the Ancients Visitor Center & Museum

	Dispersed Camping		Perennial Stream
	Travel Information Kiosk		Intermittent Stream
	Canyons of the Ancients Visitor Center & Museum		Lake
	Point of Interest		City Boundaries
	Administrative Only		Area Restricted to Trails Only
	Administrative, Public Foot, Horse		Wilderness Study Area
	Public Foot Only		Monument Boundary
	Administrative, Public Foot, Horse, Bicycle		County Boundary
	Public Foot, Horse		Bureau of Land Management
	Public Foot, Horse, Bicycle		Indian Reservation
	Public Foot, Horse, Bicycle		National Park Service
	Public Foot, Horse, Bicycle, Dirt Bike, ATV		Private
	Public Open to All Travel Means		State
	County Roads		State, County, City; US Forest Service
	Highways		



For more information please call:
970-882-5600
or visit our website at:
www.blm.gov