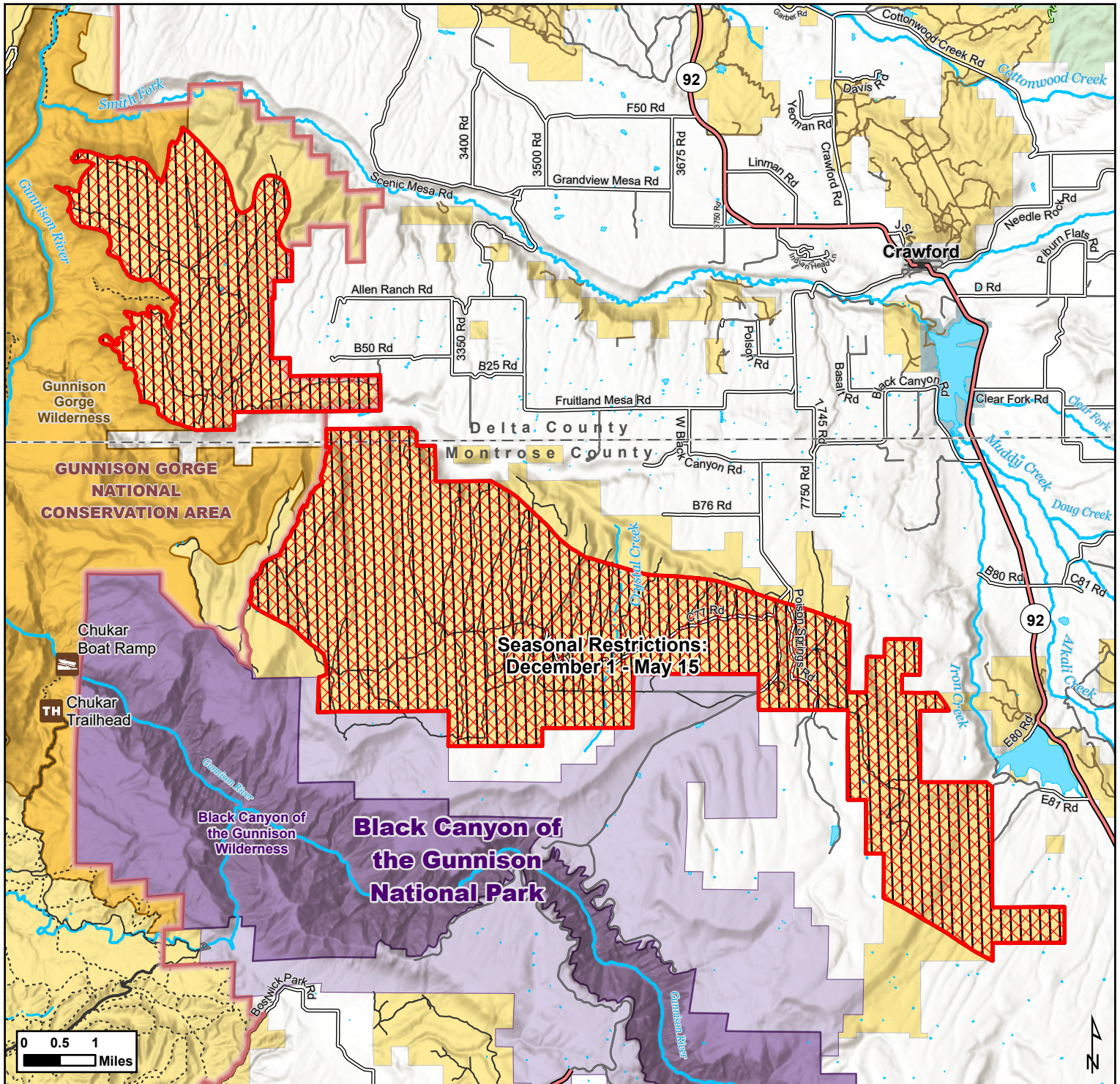




# Map 5: Gunnison Gorge NCA

BLM CO | Southwest District  
 Uncompahgre Field Office  
 2465 S Townsend Ave  
 Montrose, CO 81401  
 (970) 240-5300



- Closed to all uses (March 15 to May 15)
- Closed to motorized and mechanized uses (foot/horse allowed) (December 1 to March 15)
- Boat Launch; Boat Ramp; Boat Takeout
- Trailhead
- State Highway
- BLM Road

- BLM Primitive Road
- BLM Trail (Single Track)
- BLM Route (Not Assessed)
- County Road
- Local or Private Road
- Forest Service Route
- BLM Wilderness
- National Conservation Area Boundary

- Bureau of Land Management
- Bureau of Reclamation
- National Park Service
- Private
- State, County, City Areas
- US Forest Service
- Incorporated Area

Map Produced by BLM Uncompahgre Field Office Staff

Date: 1/22/2025  
 Map Scale: 1:125,000  
 Coordinate System: NAD 1983 UTM Zone 13N  
 CO Reference System: U.S. PLSS NMM / 6th M

**DISCLAIMER:** No warranty is made by the Bureau of Land Management as to the accuracy, reliability, or completeness of these data for individual use or aggregate use with other data. Decisions in this document only apply to BLM lands. Routes depicted on non-BLM lands are displayed for information purposes only and do not grant access to non-BLM lands.

