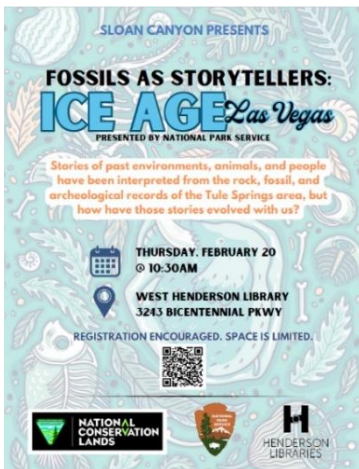




## Sloan Canyon February Newsletter

"Welcome the shortest month, but never underestimate its power to transform." — Unknown

The construction is in full swing for the Sloan Canyon Visitor Contact Station! Nawghaw Poa Road, paved pedestrian trail, and Petroglyph trailhead parking lot are CLOSED to all pedestrian, bike, and vehicle traffic. Petroglyph trail and Sloan 101 trail have been rerouted with the new parking and trailhead [here](#). For more information on the temporary closure and reroutes please visit [here](#) for closure notice and [here](#) for up-to-date information. We thank you all for your patience and look forward to welcoming you to the new visitor contact station!



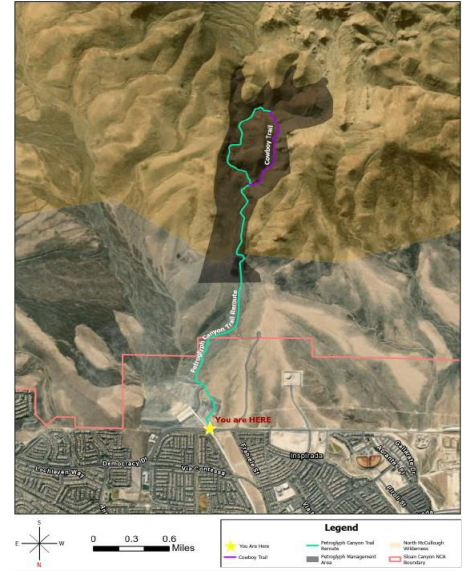
**Education Tip:** Join us on **February 20th at 10:30am at the West Henderson Library** for Fossils as Storytellers: Ice Age Las Vegas. Sign-up for the event [here](#).

**Fun Fact:** Black Mountain/404 trail: This strenuous 7 mile 2,000 vertical foot trek rewards hikers with spectacular views of the Las Vegas Valley on the summit of Black Mountain. The hike begins at Shadow Canyon Trailhead. For a less strenuous hike, take the more popular southern route to the top of the mountain. The northern route provides a more challenging and solitary experience.

**Friendly Reminder:** Sloan Canyon has some fun upcoming events to be on the lookout for:

- On **February 1st** at the McCullough Hills Trails is the mountain bike race Mojave Meltdown. Please be respectful of racers and event staff.
- Love birds? Join Sloan Canyon and the City of Henderson for the Henderson Bird Preserve Clean-Up on **March 1st from 8am -1pm**. Information and sign-up [here](#).
- Sloan Canyon Science Plan kickoff meeting will be **March 26th** at the Gibson Library 5:15-6:45pm. There will also be a virtual session if you cannot attend in person.

**Etiquette Principle:** The portable bathrooms at Petroglyph Trail have been removed. Please plan ahead. Pack out all waste. Visit other near-by restrooms before your hike. The two closest public restrooms can be found at Aventura Park and Montagna Park.



Petroglyph Trail Reroute Map



A scenic view from the top of Black Mountain.