


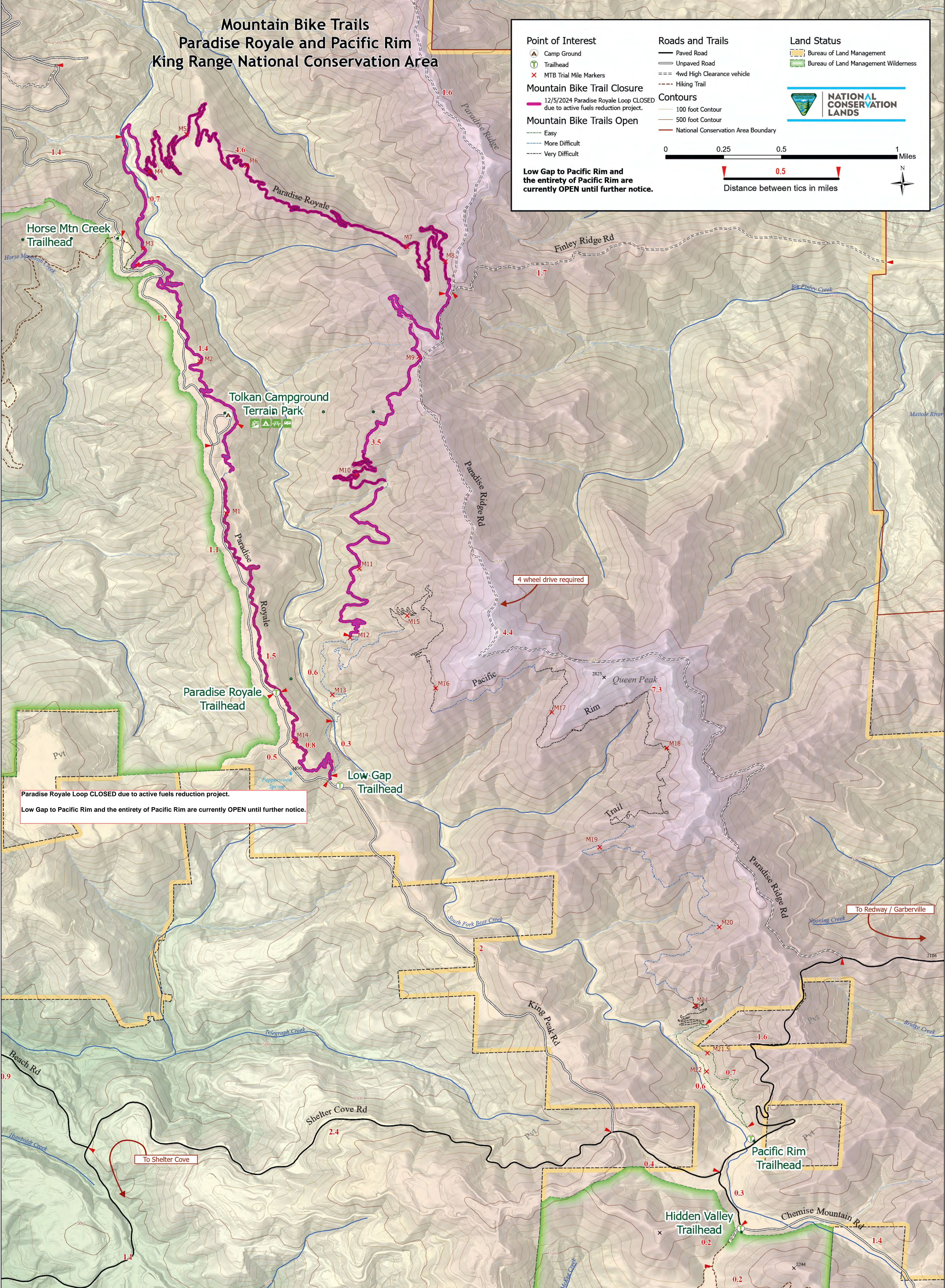
# Mountain Bike Trails Paradise Royale and Pacific Rim King Range National Conservation Area

<b>Point of Interest</b> <ul style="list-style-type: none"> <li>Camp Ground</li> <li>Trailhead</li> <li>MTB Trial Mile Markers</li> </ul>	<b>Roads and Trails</b> <ul style="list-style-type: none"> <li>Paved Road</li> <li>Unpaved Road</li> <li>4wd High Clearance vehicle</li> <li>Hiking Trail</li> </ul>	<b>Land Status</b> <ul style="list-style-type: none"> <li>Bureau of Land Management</li> <li>Bureau of Land Management Wilderness</li> </ul>
<b>Mountain Bike Trail Closure</b> <ul style="list-style-type: none"> <li>12/5/2024 Paradise Royale Loop CLOSED due to active fuels reduction project.</li> </ul>	<b>Contours</b> <ul style="list-style-type: none"> <li>100 foot Contour</li> <li>500 foot Contour</li> </ul>	 <b>NATIONAL CONSERVATION LANDS</b>
<b>Mountain Bike Trails Open</b> <ul style="list-style-type: none"> <li>Easy</li> <li>More Difficult</li> <li>Very Difficult</li> </ul>	<ul style="list-style-type: none"> <li>National Conservation Area Boundary</li> </ul>	

0 0.25 0.5 1 Miles

0.5  
Distance between tics in miles

**Low Gap to Pacific Rim and the entirety of Pacific Rim are currently OPEN until further notice.**



Paradise Royale Loop CLOSED due to active fuels reduction project.  
 Low Gap to Pacific Rim and the entirety of Pacific Rim are currently OPEN until further notice.

4 wheel drive required

To Redway / Garberville

To Shelter Cove