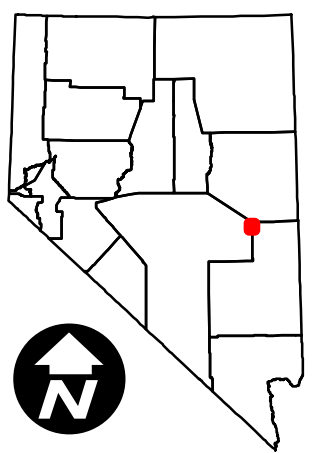
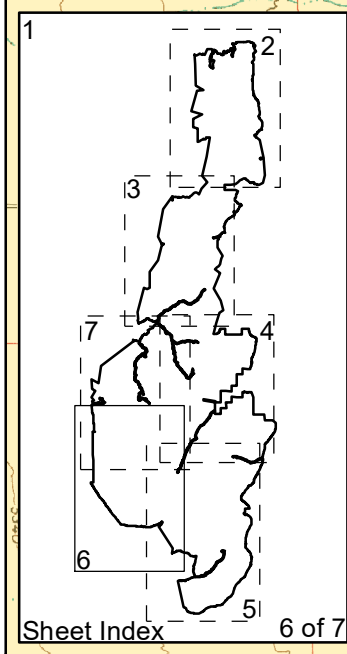
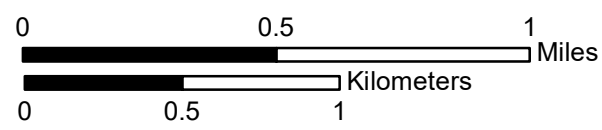


South Egan Range Wilderness



North American Datum 1983
 Universal Transverse Mercator Zone 11 North
 The portions of the wilderness boundary common with the Public Land Survey System (PLSS) were adjusted to the Nevada BLM Cadastral National Spatial Data Infrastructure (CadNSDI).

*The Course Number Indicates the Beginning Point of the Course per the Legal Description Narrative.



- Boundary Change Point*
- Monument with Wilderness Brass Cap*
- Bureau of Land Management Wilderness Boundary
- Bureau of Land Management Wilderness
- Bureau of Land Management
- Private
- County Boundary

U. S. Geological Survey, 7.5 minute quadrangle maps (Nevada):
 Hardy Springs Haggerty Spring
 Shingle Pass Moorman Spring SE

South Egan Range Wilderness

White Pine County, Lincoln County, and Nye County, Nevada
 Bureau of Land Management, Ely District Office

Boundary of Wilderness Area as included in the National Wilderness Preservation System by Public Law No. 109-432, dated December 20, 2006.

Map Completed May 4, 2022

No Warranty is made by the Bureau of Land Management as to the accuracy, reliability, or completeness of these data for individual use or aggregate use with other data.

