



Sloan Canyon January Newsletter

“January is the quietest month in the garden. But just because it looks quiet doesn’t mean that nothing is happening.”-Rosalie Muller Wright

The construction has begun on the Sloan Canyon Visitor Contact Station! The Nawghaw Poa Road and Petroglyph trailhead parking lot are CLOSED to all pedestrian, bike, and vehicle traffic. Petroglyph trail and Sloan 101 trail have been rerouted. For more information on the temporary closure and reroutes please visit [here](#) for closure notice and [here](#) for up-to-date information. We thank you all for your patience and look forward to welcoming you to the new visitor contact station in a couple of years!

Education Tip: Join us on **Jan 16 at 10:30am at the West Henderson Library** for our first Speaker Series of 2025! Visit [our website](#) for more details on this talk.

Fun Fact: Have you ever hiked Park Peak (403)? This moderate five mile long 800 vertical foot hike begins at the Shadow Canyon

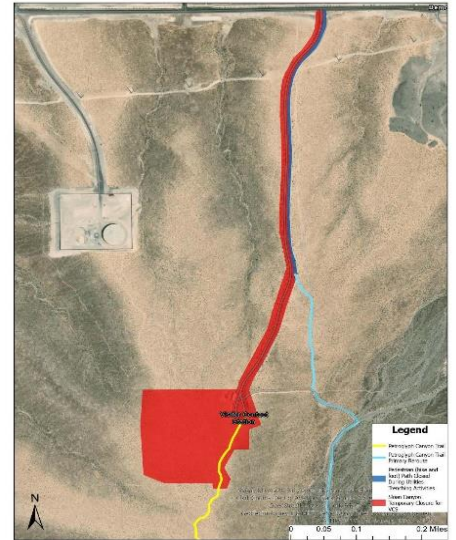


A scenic view from Park Peak (403) trail.

Trailhead. Follow the "403" trail markers to reach the top of Park Peak. Hikers will be rewarded with incredible views of the Las Vegas Valley once the summit is reached. This hike is a good test to see if you are ready to hike to the top of Black Mountain on your next hike.

fined in accordance with 18 U.S.C. 3571, imprisoned no more than 12 months under 43 U.S.C. 1733(a) and 43 CFR 8360.0–7, or both. In accordance with 43 CFR 8365.1–7, State or local officials may also impose penalties for violations of State law.

Etiquette Principle: Whether you are hiking, biking, or horseback riding don’t forget to “pack it in, pack it out”. Bring all the food and water you need for your adventure and always pack it all out, including wrappers, caps, and even food waste like apple cores and banana peels. To learn more about this outdoor principle visit the [Leave No Trace website](#).



Sloan Canyon’s closure map.

Friendly Reminder: Please follow all closure notices and reroute signs. This closure is in effect for your safety during the time of construction. Any person who violates the temporary closures or restrictions may be tried before a United States magistrate and



Volunteer clean-up at Sloan Canyon.