



U.S. Department of the Interior
Bureau of Land Management

EMERGENCY CLOSURE ORDER

Bureau of Land Management California

EMERGENCY CLOSURE OF AREAS of BLM LANDS South of Lubken Canyon Road

November 25, 2024

Action: Pursuant to 43 U.S.C. 1701 et seq., Code of Federal Regulations, 43 CFR 9212.2, the Bureau of Land Management (BLM) hereby provides notice that effective immediately, the public lands described below (Map 1) are closed to all forms of public access, except as described below.

Affected Area: Bureau of Land Management managed lands in Inyo County south of Lubken Canyon Road, north of Carroll Creek Road, west of Horseshoe Meadow Road, and east of Highway 395, as shown in the closure map.

Prohibitions: The public must not enter the closure area. All uses within the closure area are prohibited. Exceptions to these prohibitions are noted below under Supplemental Information.

Dates: This closure is effective immediately and will remain in effect until such time as conditions allow for safe use of the public lands.

Supplemental Information: The following persons are exempt from the provisions of this Order:

1. Any Federal, State, or local officer, or member of an organized medical, rescue or firefighting force engaged in fire, emergency, or law enforcement activities, or public utility employees engaged in emergency repairs.
2. BLM employees, contractors, or agents engaged in official duties.
3. Individuals operating within the scope of their official and legitimate governmental duties.
4. Parties who carry written approval signed by the BLM Authorized Officer allowing access to the described public lands.
5. Parties who require access to Rights of Ways, such as Los Angeles Department of Water and Power.

Penalties: Any person who violates this may be tried before a United States Magistrate and fined in accordance with 18 U.S.C. 3571, imprisoned for no more than 12 months, or both. Vehicles found in violation of this order may be removed.

Effective: This Order is effective immediately upon signature.

Signed by:

SHERRI LISIUS

Digitally signed by SHERRI
LISIUS
Date: 2024.11.25 15:03:38
-08'00'

Field Manager
Sherri Lisius

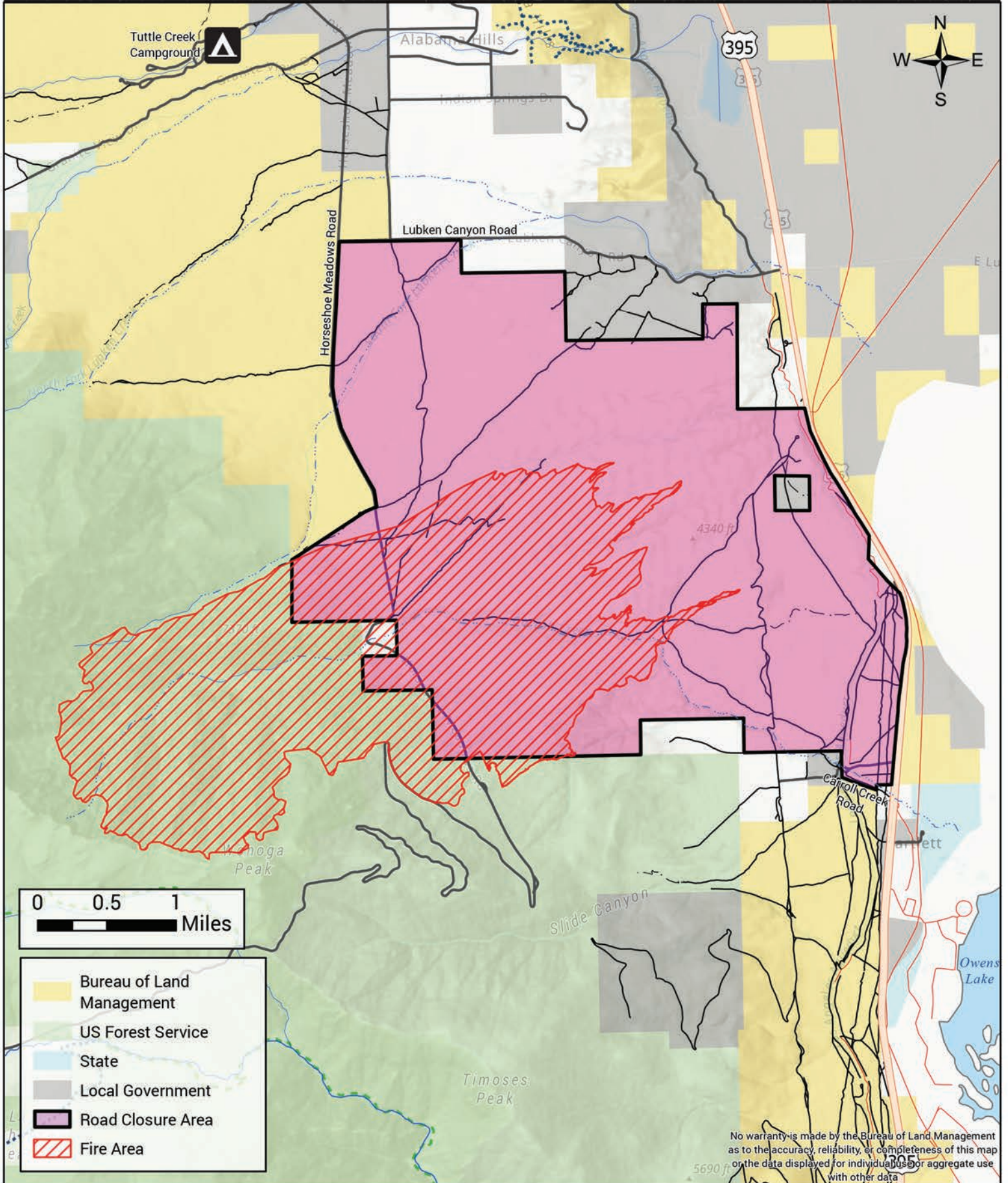
Date



Horseshoe Fire BLM Temporary Closure Area 11/25

Bureau of Land Management
Bishop Field Office
351 Pacu Lane, Suite 100
Bishop, CA, 93514
760-872-5000

California



No warranty is made by the Bureau of Land Management as to the accuracy, reliability, or completeness of this map or the data displayed for individual use or aggregate use with other data.