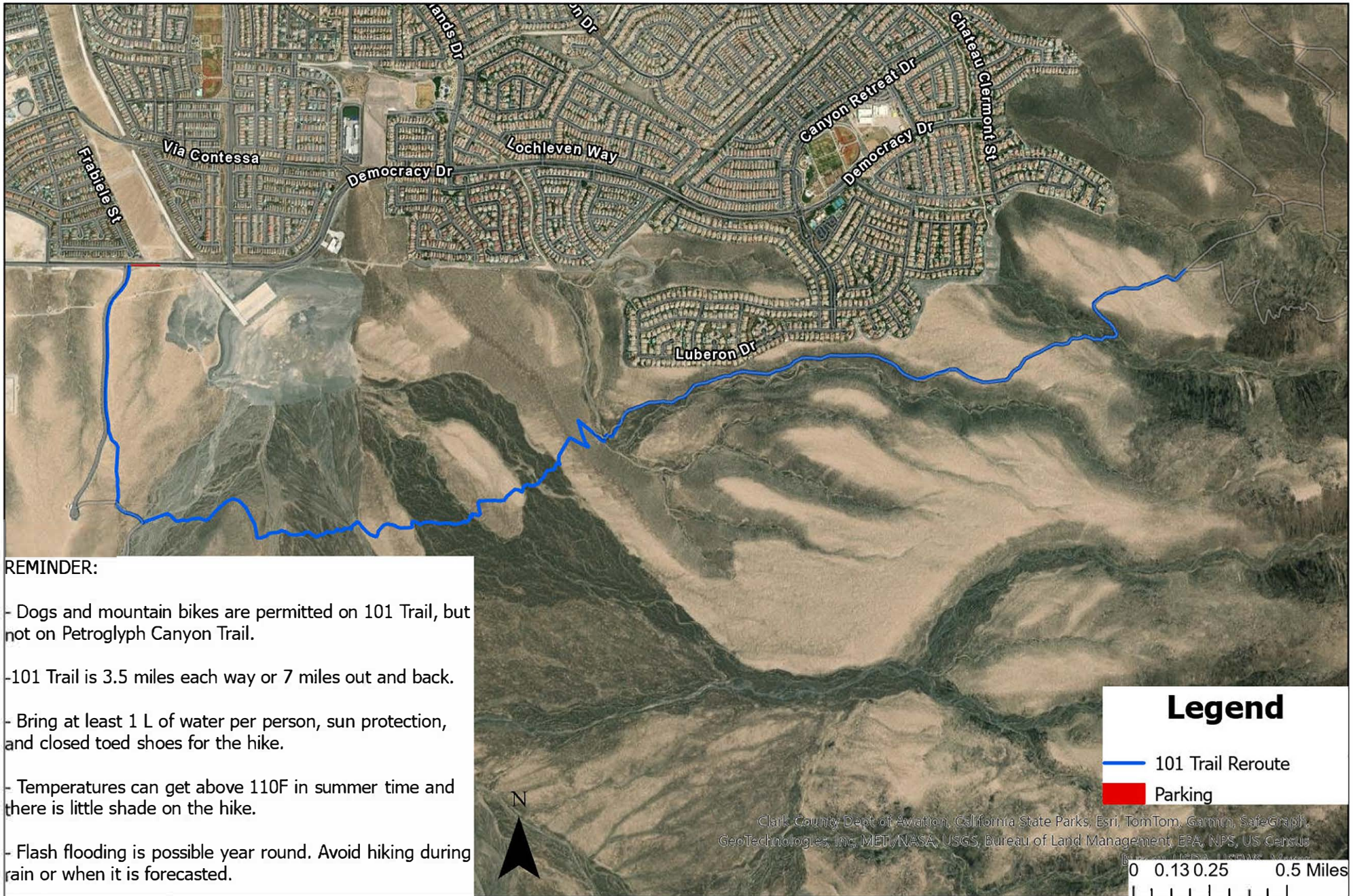




# 101 Trail Reroute



**REMINDER:**

- Dogs and mountain bikes are permitted on 101 Trail, but not on Petroglyph Canyon Trail.
- 101 Trail is 3.5 miles each way or 7 miles out and back.
- Bring at least 1 L of water per person, sun protection, and closed toed shoes for the hike.
- Temperatures can get above 110F in summer time and there is little shade on the hike.
- Flash flooding is possible year round. Avoid hiking during rain or when it is forecasted.