

APPENDIX D

Figures for:
Special Areas Proposal

Appendix D: High resolution maps

Figures included in this appendix:

D-1

Figure 1. Proposed Special Area Expansions and identified significant resource values.

Figure 2. Expansion A – Teshekpuk Lake Special Area (Teshekpuk Caribou Herd Migratory Pathways Expansion).

Figure 3. Approximate coverage area for MPMs A-1.1, A-3.1, B-1.4, B-2.1, B-3.1, and D-1.1.

Figure 4. Approximate coverage area for MPMs A-1.2, A-2.2, and C-2.2.

Figure 5. Approximate coverage area for MPMs A-2.1, A-3.2, B-1.2, B-3.2, and D-1.2.

D-2

Figure 6. Expansion B – Teshekpuk Lake Special Area (Teshekpuk Caribou Herd Calving Grounds Expansion).

Figure 7. Approximate coverage area for MPMs B-1.1 and D-1.3.

Figure 8. Approximate coverage area for MPM B-1.3.

Figure 9. Expansion C – Teshekpuk Lake Special Area (Ikpikpuk River Headwaters Expansion).

Figure 10. Expansion D – Utukok River Uplands Special Area (Western Arctic Herd Calving Grounds Expansion).

Figure 11. Expansion E – Colville River Special Area (Colville River Headwaters Expansion).

Figure 12. Expansion F – Peard Bay Special Area (Peard Bay Watershed Expansion).

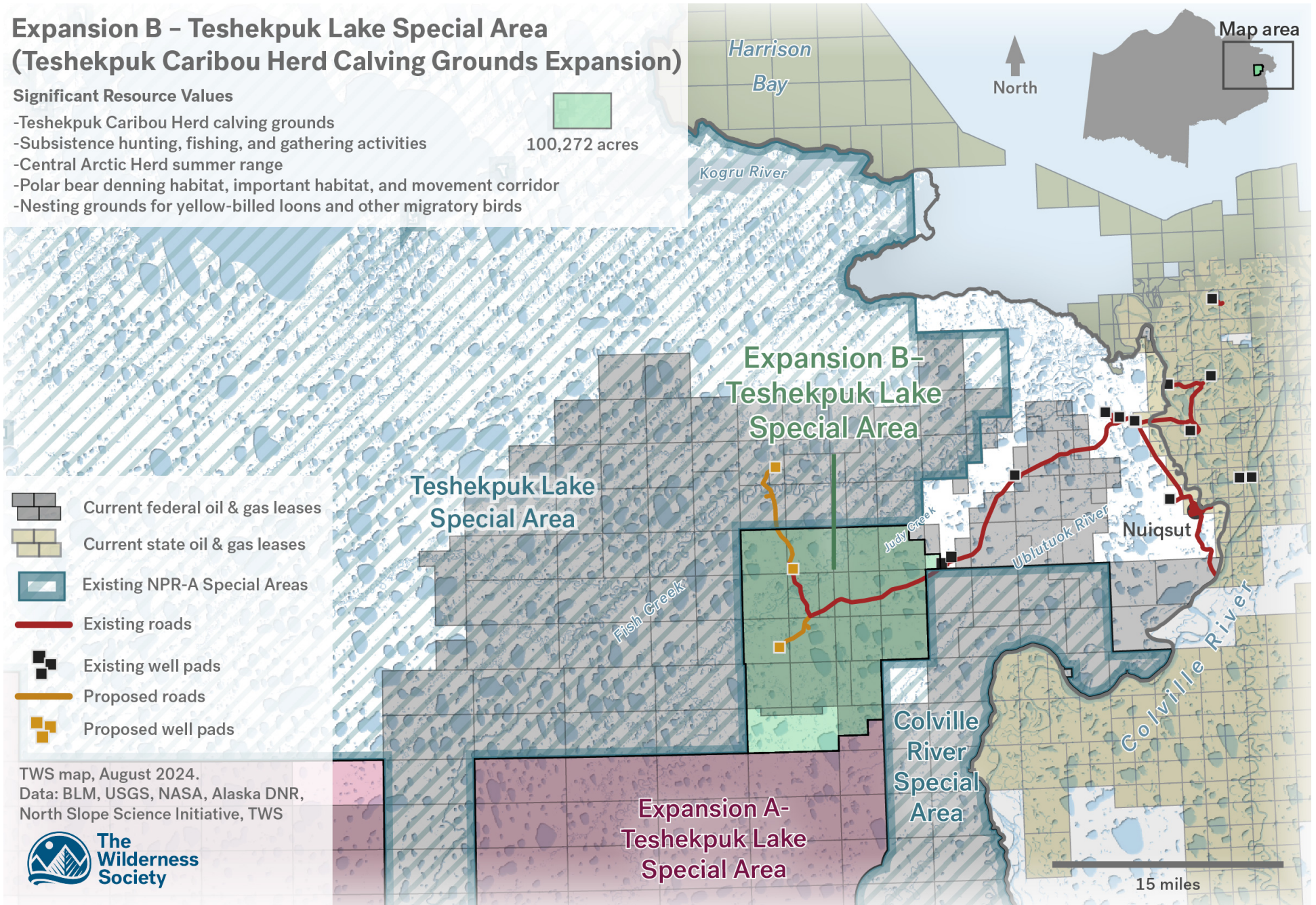
D-2

Expansion B – Teshekpuk Lake Special Area (Teshekpuk Caribou Herd Calving Grounds Expansion)

Significant Resource Values

- Teshekpuk Caribou Herd calving grounds
- Subsistence hunting, fishing, and gathering activities
- Central Arctic Herd summer range
- Polar bear denning habitat, important habitat, and movement corridor
- Nesting grounds for yellow-billed loons and other migratory birds

100,272 acres



TWS map, August 2024.
Data: BLM, USGS, NASA, Alaska DNR,
North Slope Science Initiative, TWS



Figure 6. Expansion B – Teshekpuk Lake Special Area (Teshekpuk Caribou Herd Calving Grounds Expansion).

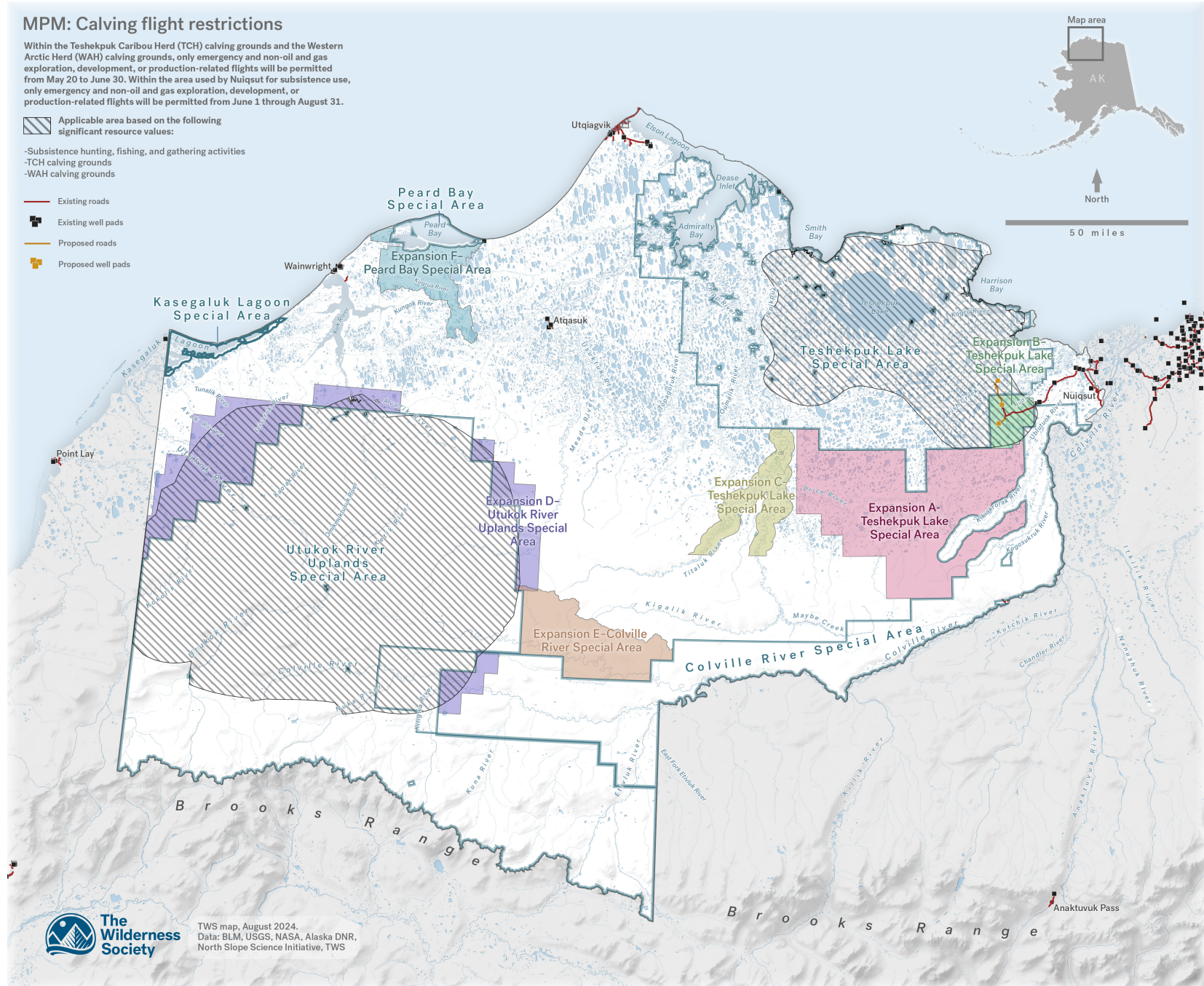
MPM: Calving flight restrictions

Within the Teshekpuk Caribou Herd (TCH) calving grounds and the Western Arctic Herd (WAH) calving grounds, only emergency and non-oil and gas exploration, development, or production-related flights will be permitted from May 20 to June 30. Within the area used by Nuiqsut for subsistence use, only emergency and non-oil and gas exploration, development, or production-related flights will be permitted from June 1 through August 31.

Applicable area based on the following significant resource values:

- Subsistence hunting, fishing, and gathering activities
- TCH calving grounds
- WAH calving grounds

- Existing roads
- Existing well pads
- Proposed roads
- Proposed well pads



TWS map, August 2024.
Data: BLM, USGS, NASA, Alaska DNR,
North Slope Science Initiative, TWS

Figure 7. Approximate coverage area for MPMs B-1.1 and D-1.3.

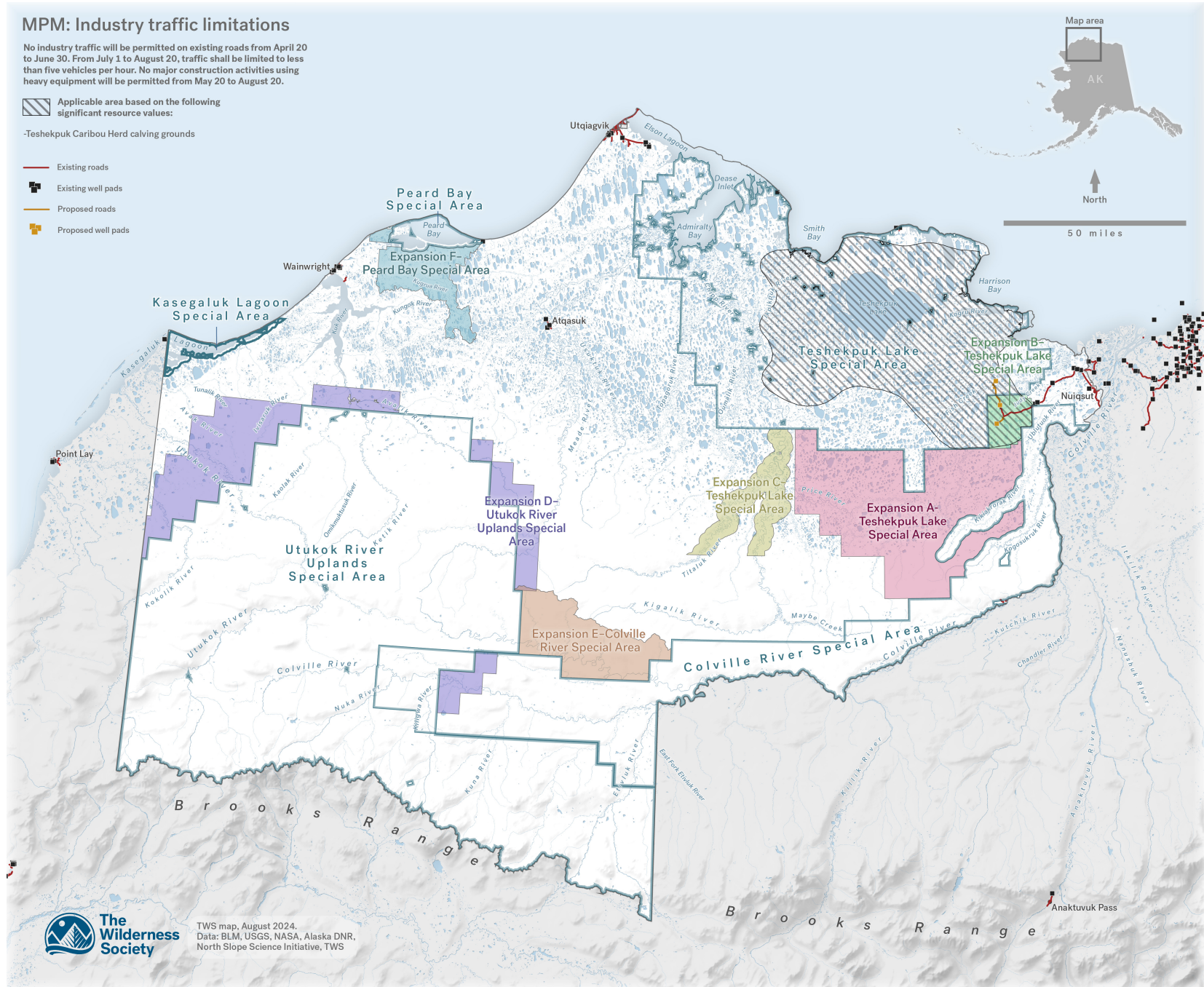
MPM: Industry traffic limitations

No industry traffic will be permitted on existing roads from April 20 to June 30. From July 1 to August 20, traffic shall be limited to less than five vehicles per hour. No major construction activities using heavy equipment will be permitted from May 20 to August 20.

Applicable area based on the following significant resource values:

-Teshkepkuk Caribou Herd calving grounds

-  Existing roads
-  Existing well pads
-  Proposed roads
-  Proposed well pads



TWS map, August 2024.
Data: BLM, USGS, NASA, Alaska DNR,
North Slope Science Initiative, TWS

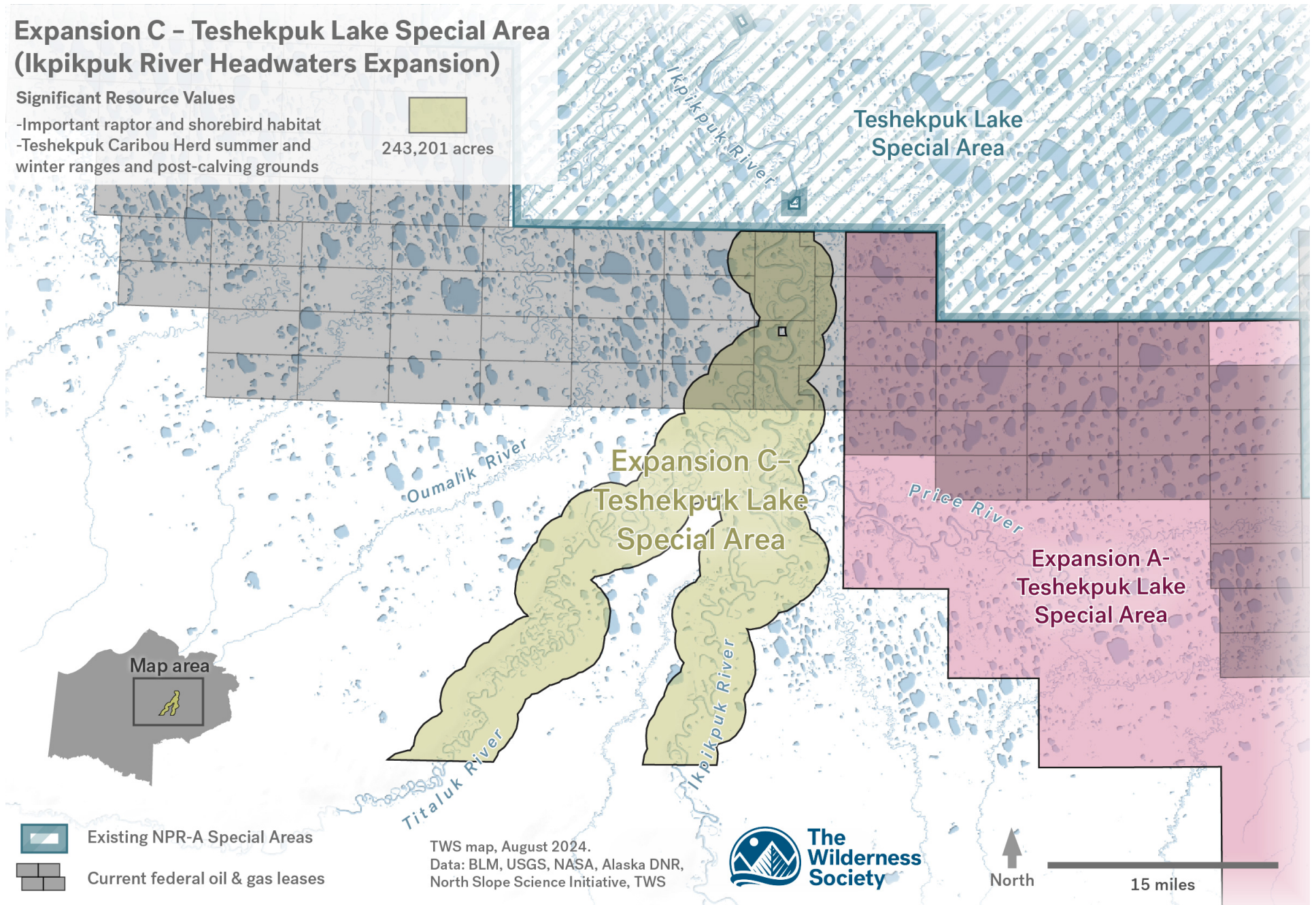
Figure 8. Approximate coverage area for MPM B-1.3.

Expansion C – Teshekpuk Lake Special Area (Ikpikpuk River Headwaters Expansion)

Significant Resource Values

- Important raptor and shorebird habitat
- Teshekpuk Caribou Herd summer and winter ranges and post-calving grounds

243,201 acres



TWS map, August 2024.
Data: BLM, USGS, NASA, Alaska DNR,
North Slope Science Initiative, TWS

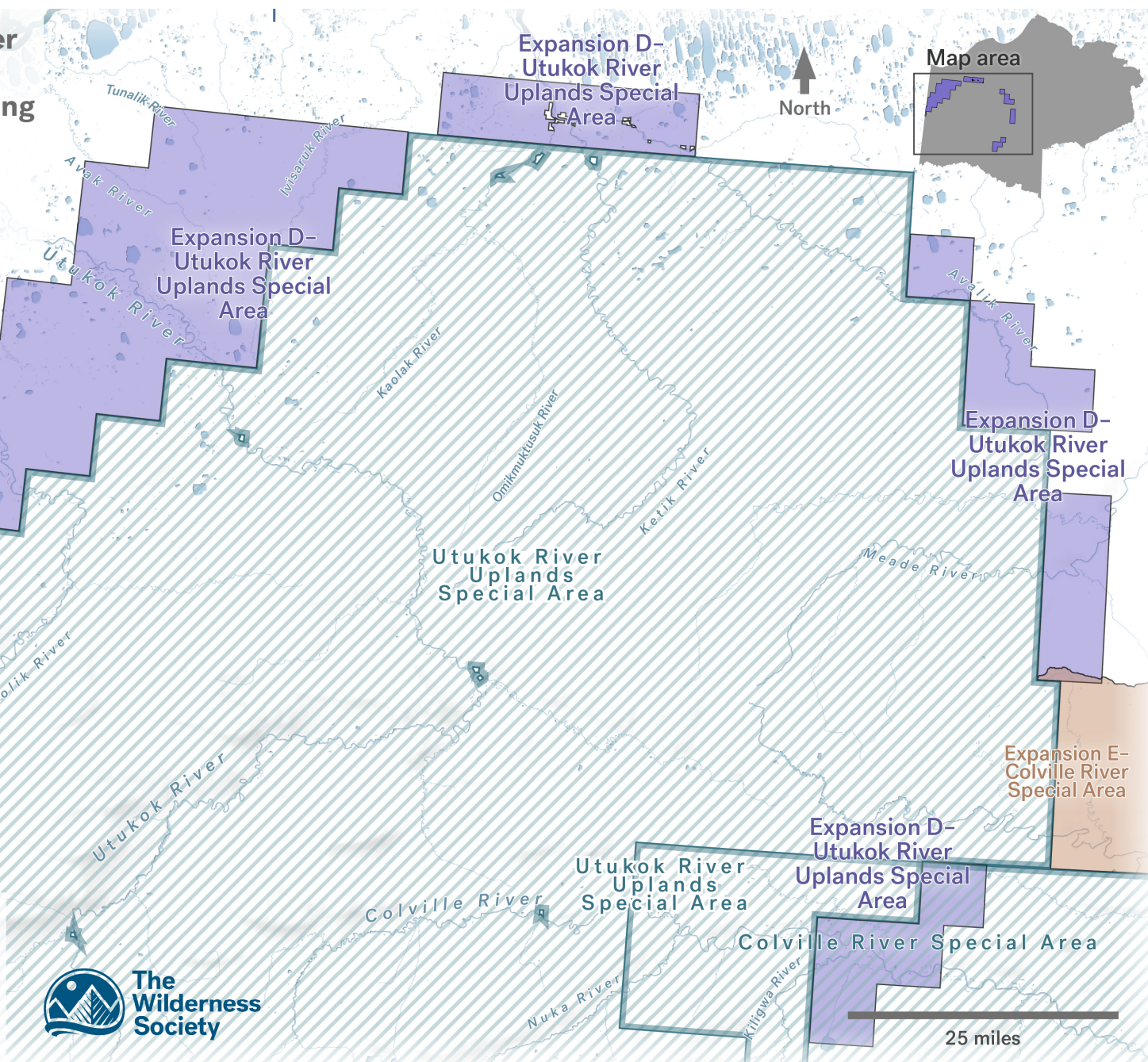
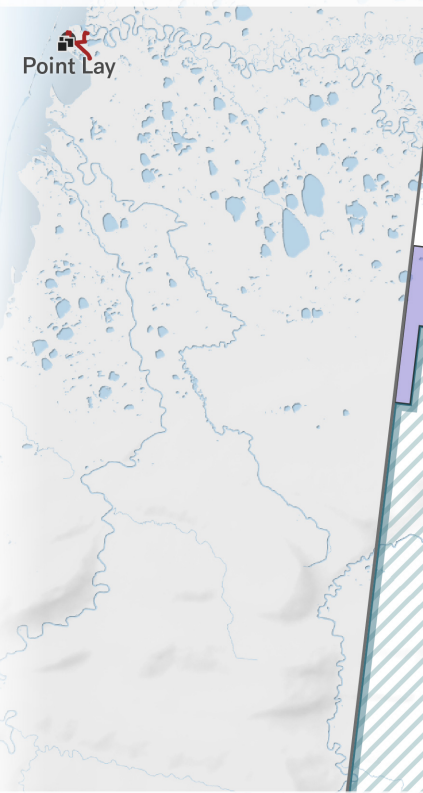


Figure 9. Expansion C – Teshekpuk Lake Special Area (Ikpikpuk River Headwaters Expansion).

Expansion D – Utukok River Uplands Special Area (Western Arctic Herd Calving Grounds Expansion)

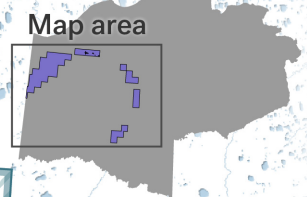
829,934 acres

Significant Resource Values
-Western Arctic Herd calving grounds



Existing NPR-A Special Areas

TWS map, August 2024.
Data: BLM, USGS, NASA, Alaska DNR,
North Slope Science Initiative, TWS



25 miles

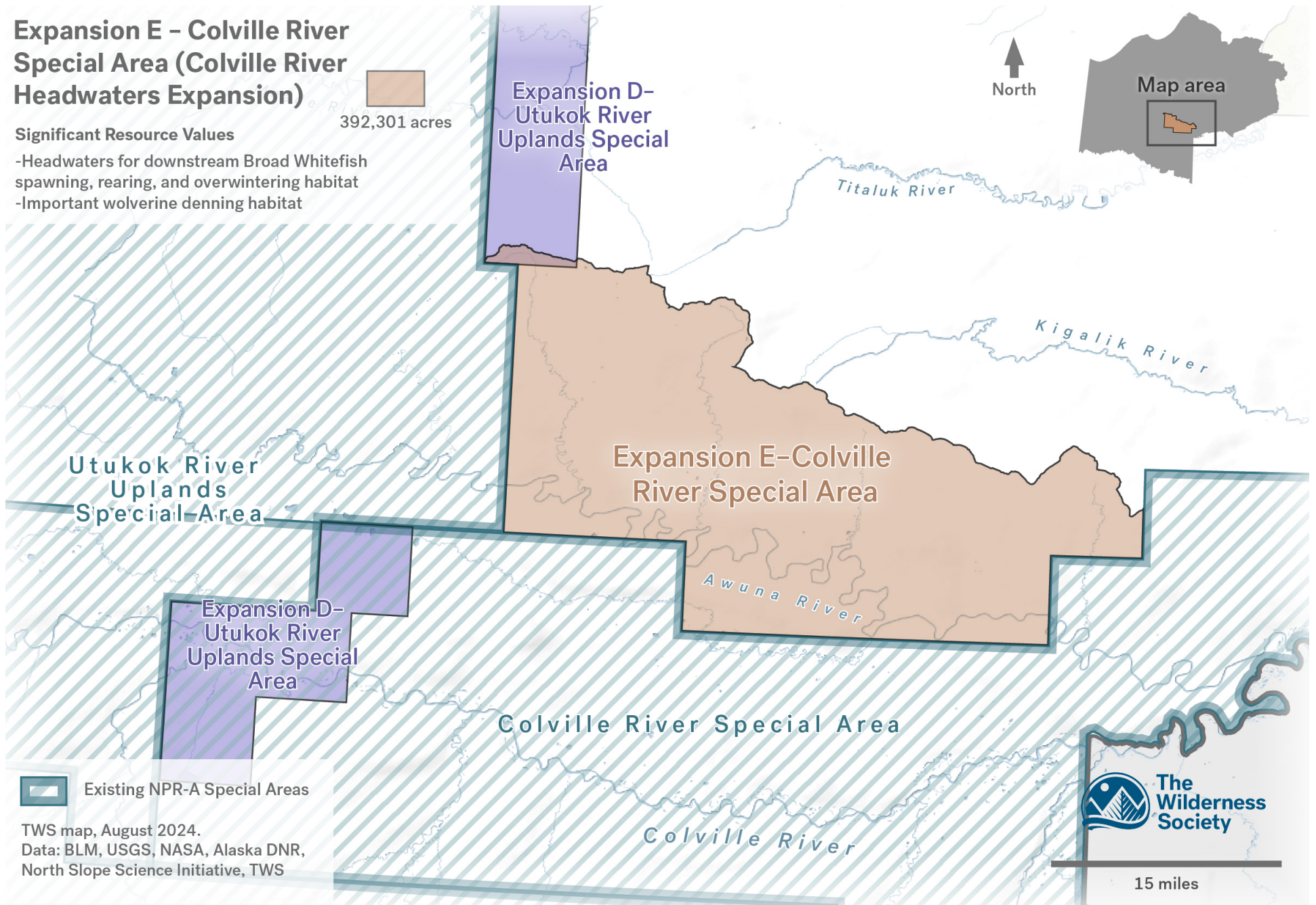
Figure 10. Expansion D – Utukok River Uplands Special Area (Western Arctic Herd Calving Grounds Expansion).

Expansion E – Colville River Special Area (Colville River Headwaters Expansion)

Significant Resource Values

- Headwaters for downstream Broad Whitefish spawning, rearing, and overwintering habitat
- Important wolverine denning habitat

392,301 acres



TWS map, August 2024.
Data: BLM, USGS, NASA, Alaska DNR,
North Slope Science Initiative, TWS



Figure 11. Expansion E – Colville River Special Area (Colville River Headwaters Expansion).

Expansion F – Peard Bay Special Area (Peard Bay Watershed Expansion)

Significant Resource Values

- Important shorebird and waterfowl habitat
- Polar bear denning habitat, important habitat, and movement corridor
- Marine mammal haul-out areas

235,810 acres

Peard Bay
Special Area

Peard
Bay

Expansion F–
Peard Bay Special Area

Wainwright

Kuk River

Kugrua River

Kungok River

Inaru River

Meade River

Atqasuk



Map area



 Existing NPR-A Special Areas

TWS map, August 2024.
Data: BLM, USGS, NASA, Alaska DNR,
North Slope Science Initiative, TWS



15 miles

Figure 12. Expansion F – Peard Bay Special Area (Peard Bay Watershed Expansion).