

# APPENDIX D

Figures for:  
Special Areas Proposal

# **Appendix D: High resolution maps**

*Figures included in this appendix:*

## **D-1**

**Figure 1.** Proposed Special Area Expansions and identified significant resource values.

**Figure 2.** Expansion A – Teshekpuk Lake Special Area (Teshekpuk Caribou Herd Migratory Pathways Expansion).

**Figure 3.** Approximate coverage area for MPMs A-1.1, A-3.1, B-1.4, B-2.1, B-3.1, and D-1.1.

**Figure 4.** Approximate coverage area for MPMs A-1.2, A-2.2, and C-2.2.

**Figure 5.** Approximate coverage area for MPMs A-2.1, A-3.2, B-1.2, B-3.2, and D-1.2.

## **D-2**

**Figure 6.** Expansion B – Teshekpuk Lake Special Area (Teshekpuk Caribou Herd Calving Grounds Expansion).

**Figure 7.** Approximate coverage area for MPMs B-1.1 and D-1.3.

**Figure 8.** Approximate coverage area for MPM B-1.3.

**Figure 9.** Expansion C – Teshekpuk Lake Special Area (Ikpikpuk River Headwaters Expansion).

**Figure 10.** Expansion D – Utukok River Uplands Special Area (Western Arctic Herd Calving Grounds Expansion).

**Figure 11.** Expansion E – Colville River Special Area (Colville River Headwaters Expansion).

**Figure 12.** Expansion F – Peard Bay Special Area (Peard Bay Watershed Expansion).

D-1

# Proposed Expansions

- Expansion A – Teshekpuk Lake Special Area (Teshekpuk Caribou Herd Migratory Pathways Expansion)**  
 1,127,891 acres
- Teshekpuk Caribou Herd spring and fall migration corridors
  - Teshekpuk Caribou Herd summer and winter ranges and post-calving grounds
  - Central Arctic Herd summer range
  - Subsistence hunting, fishing, and gathering activities
  - Polar bear denning habitat, important habitat, and movement corridor
  - Nesting grounds for yellow-billed loons and other migratory birds
  - Headwaters for downstream Broad Whitefish spawning, rearing, and overwintering habitat
  - Important wolverine denning habitat
- Expansion B – Teshekpuk Lake Special Area (Teshekpuk Caribou Herd Calving Grounds Expansion)**  
 100,272 acres
- Teshekpuk Caribou Herd calving grounds
  - Subsistence hunting, fishing, and gathering activities
  - Central Arctic Herd summer range
  - Polar bear denning habitat, important habitat, and movement corridor
  - Nesting grounds for yellow-billed loons and other migratory birds

- Expansion C – Teshekpuk Lake Special Area (Ikpikpuk River Headwaters Expansion)**  
 243,201 acres
- Important raptor and shorebird habitat
  - Teshekpuk Caribou Herd summer and winter ranges and post-calving grounds
- Expansion D – Utukok River Uplands Special Area (Western Arctic Herd Calving Grounds Expansion)**  
 829,934 acres
- Western Arctic Herd calving grounds
- Expansion E – Colville River Special Area (Colville River Headwaters Expansion)**  
 392,301 acres
- Headwaters for downstream Broad Whitefish spawning, rearing, and overwintering habitat
  - Important wolverine denning habitat

- Expansion F – Peard Bay Special Area (Peard Bay Watershed Expansion)**  
 235,810 acres
- Important shorebird and waterfowl habitat
  - Polar bear denning habitat, important habitat, and movement corridor
  - Marine mammal haul-out areas

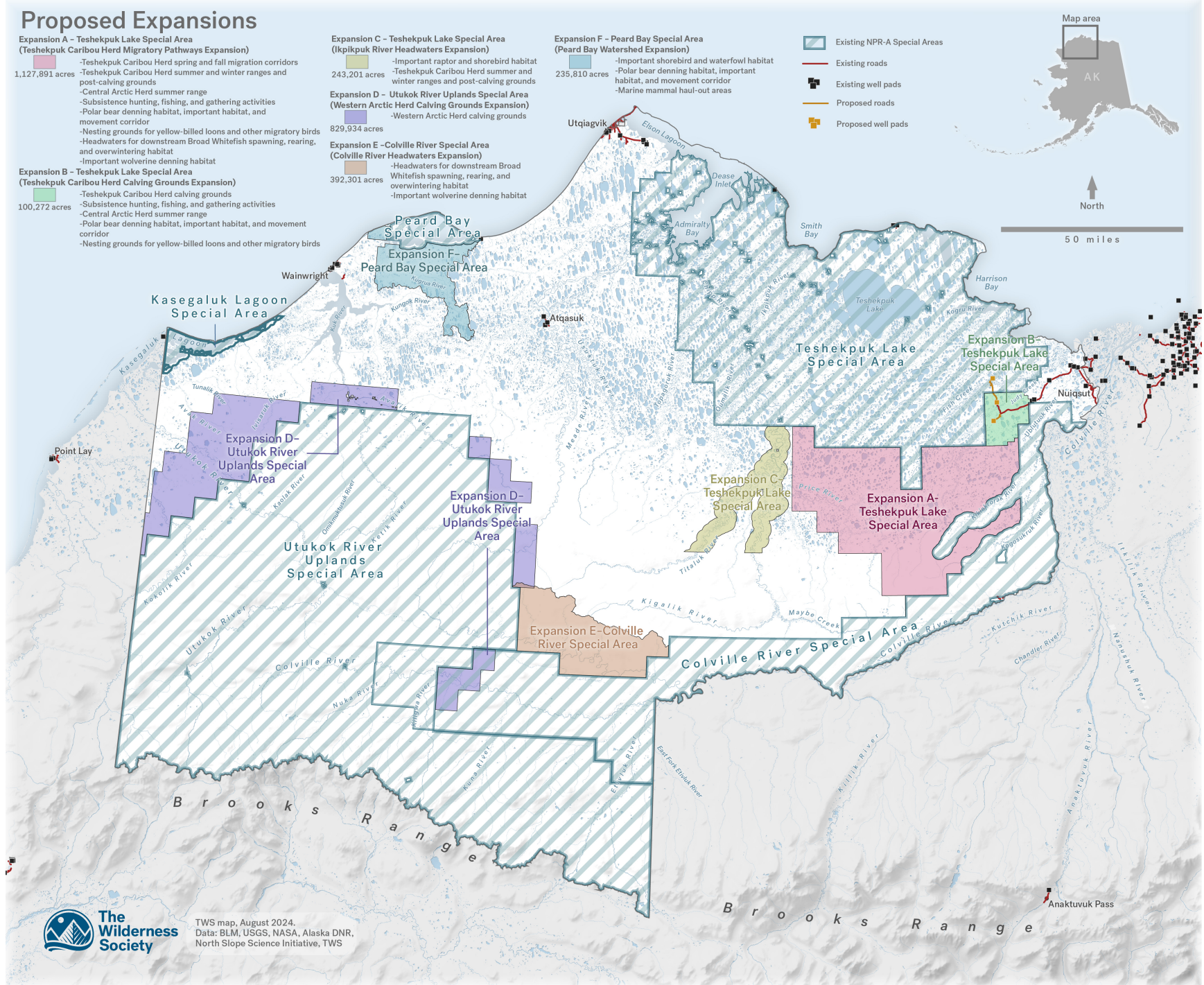
- Existing NPR-A Special Areas
- Existing roads
- Existing well pads
- Proposed roads
- Proposed well pads

Map area

AK



50 miles



TWS map, August 2024.  
 Data: BLM, USGS, NASA, Alaska DNR,  
 North Slope Science Initiative, TWS

Figure 1. Proposed Special Area Expansions and identified significant resource values.



## Expansion A—Teshekpuk Lake Special Area (Teshekpuk Caribou Herd Migratory Pathways Expansion)

### Significant Resource Values

- Teshekpuk Caribou Herd spring and fall migration corridors
- Teshekpuk Caribou Herd summer and winter ranges and post-calving grounds
- Central Arctic Herd summer range
- Subsistence hunting, fishing, and gathering activities
- Polar bear denning habitat, important habitat, and movement corridor
- Nesting grounds for yellow-billed loons and other migratory birds
- Headwaters for downstream Broad Whitefish spawning, rearing, and overwintering habitat
- Important wolverine denning habitat

1,127,891 acres

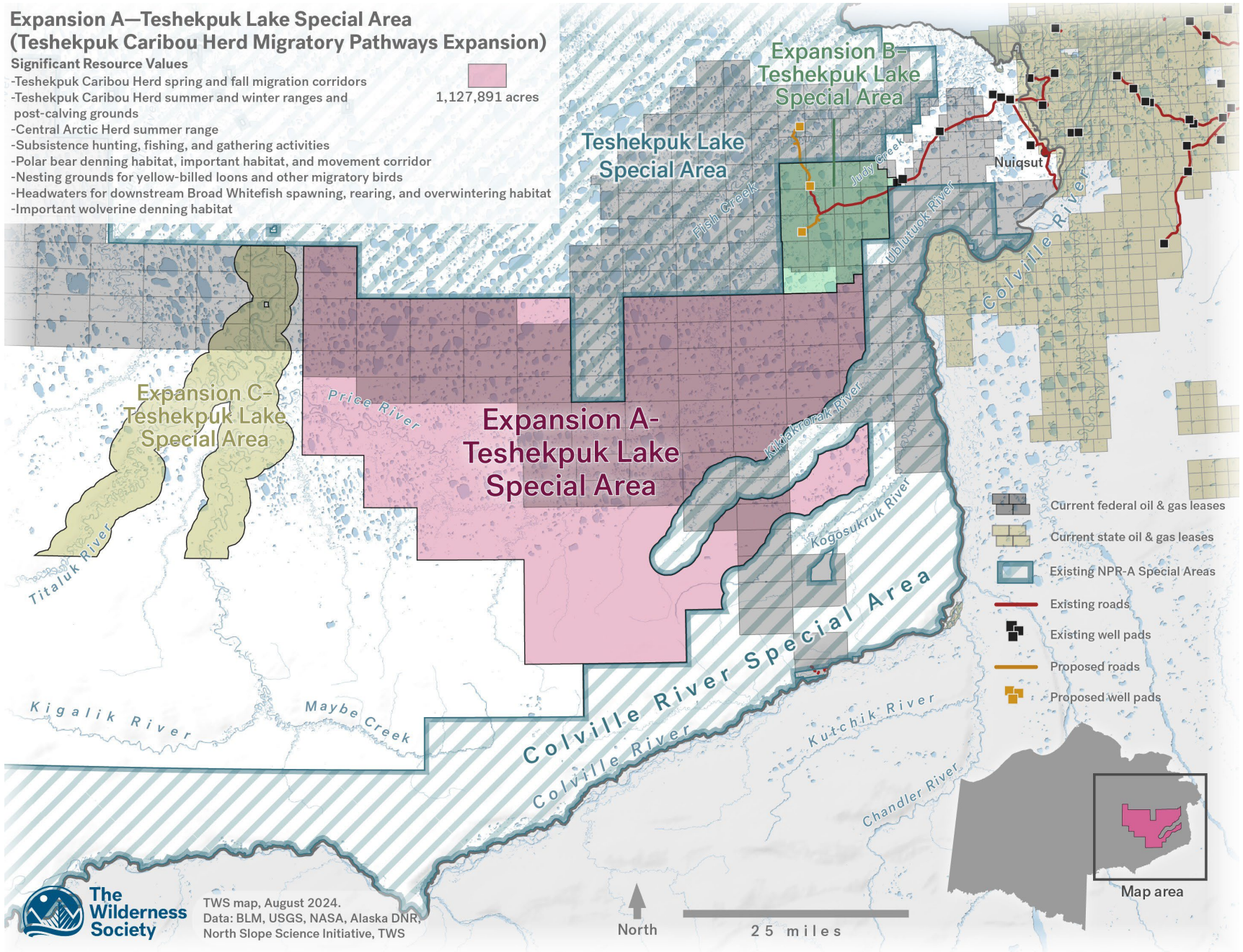
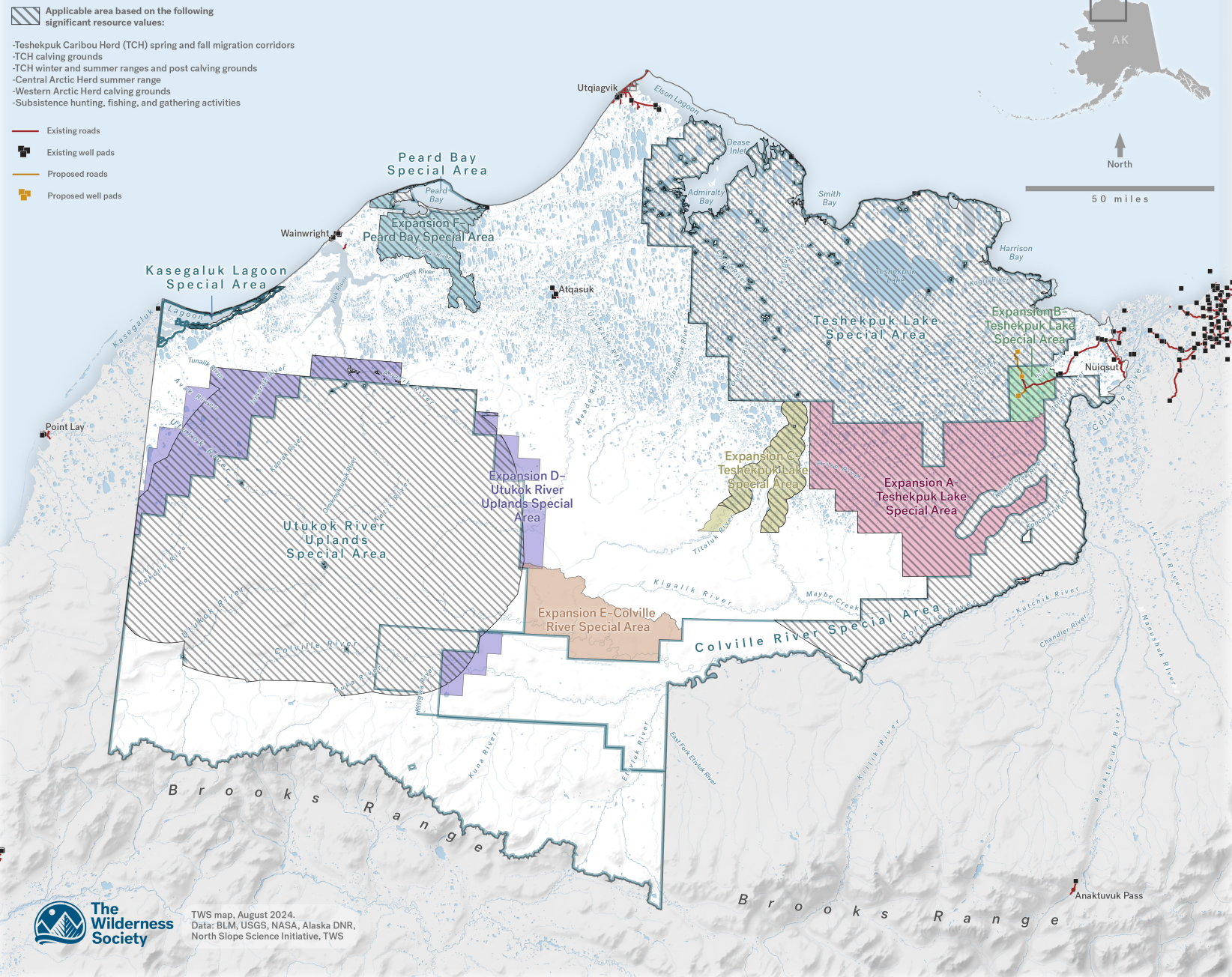


Figure 2. Expansion A – Teshekpuk Lake Special Area (Teshekpuk Caribou Herd Migratory Pathways Expansion).



**MPM: New permanent gravel roads will be prohibited.**



**Figure 3.** Approximate coverage area for MPMs A-1.1, A-3.1, B-1.4, B-2.1, B-3.1, and D-1.1.



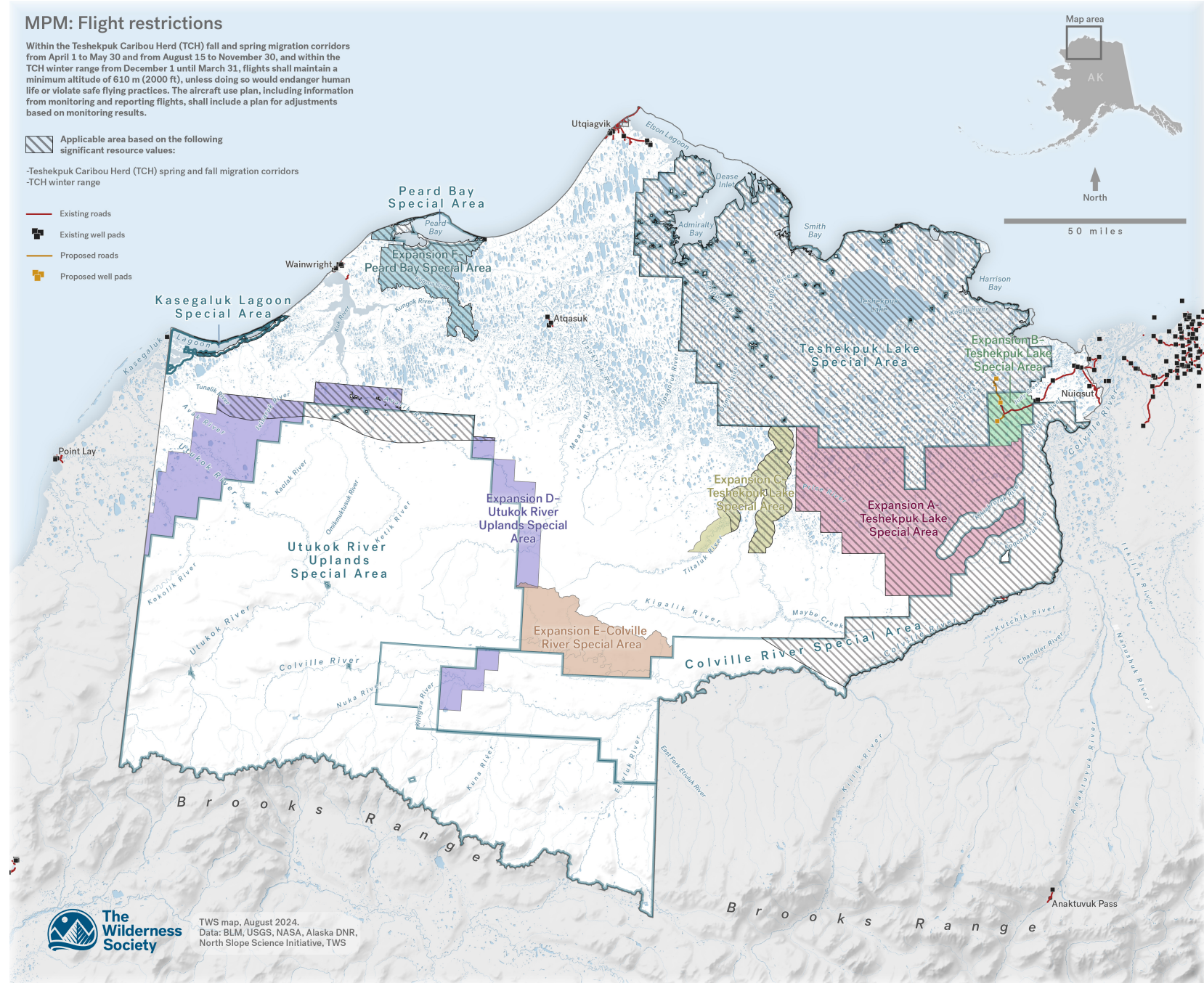
# MPM: Flight restrictions

Within the Teshekpuk Caribou Herd (TCH) fall and spring migration corridors from April 1 to May 30 and from August 15 to November 30, and within the TCH winter range from December 1 until March 31, flights shall maintain a minimum altitude of 610 m (2000 ft), unless doing so would endanger human life or violate safe flying practices. The aircraft use plan, including information from monitoring and reporting flights, shall include a plan for adjustments based on monitoring results.

Applicable area based on the following significant resource values:

-Teshekpuk Caribou Herd (TCH) spring and fall migration corridors  
-TCH winter range

-  Existing roads
-  Existing well pads
-  Proposed roads
-  Proposed well pads



TWS map, August 2024.  
Data: BLM, USGS, NASA, Alaska DNR,  
North Slope Science Initiative, TWS

Figure 4. Approximate coverage area for MPMs A-1.2, A-2.2, and C-2.2.



## MPM: Winter travel restrictions

A snow water equivalent (SWE) greater than 21.6 cm will be required before winter travel is permitted. SWE should be measured at least 15 times each along an "L" where each arm is 50 m long. These measurements should be repeated every 10 km of travel, or every 3 days, whichever occurs first, and will be repeated after rainfall, snowfalls, or windstorms. The measurement sites will be in areas representative of general conditions, and favor neither scoured nor drifted areas. Overland travel will be stopped in areas or at times when minimum snow conditions are not met.

Applicable area based on the following significant resource values:

- Teshekpuk Caribou Herd (TCH) summer and winter ranges and post-calving grounds
- TCH calving grounds
- Western Arctic Herd calving grounds
- Central Arctic Herd summer range

- Existing roads
- Existing well pads
- Proposed roads
- Proposed well pads

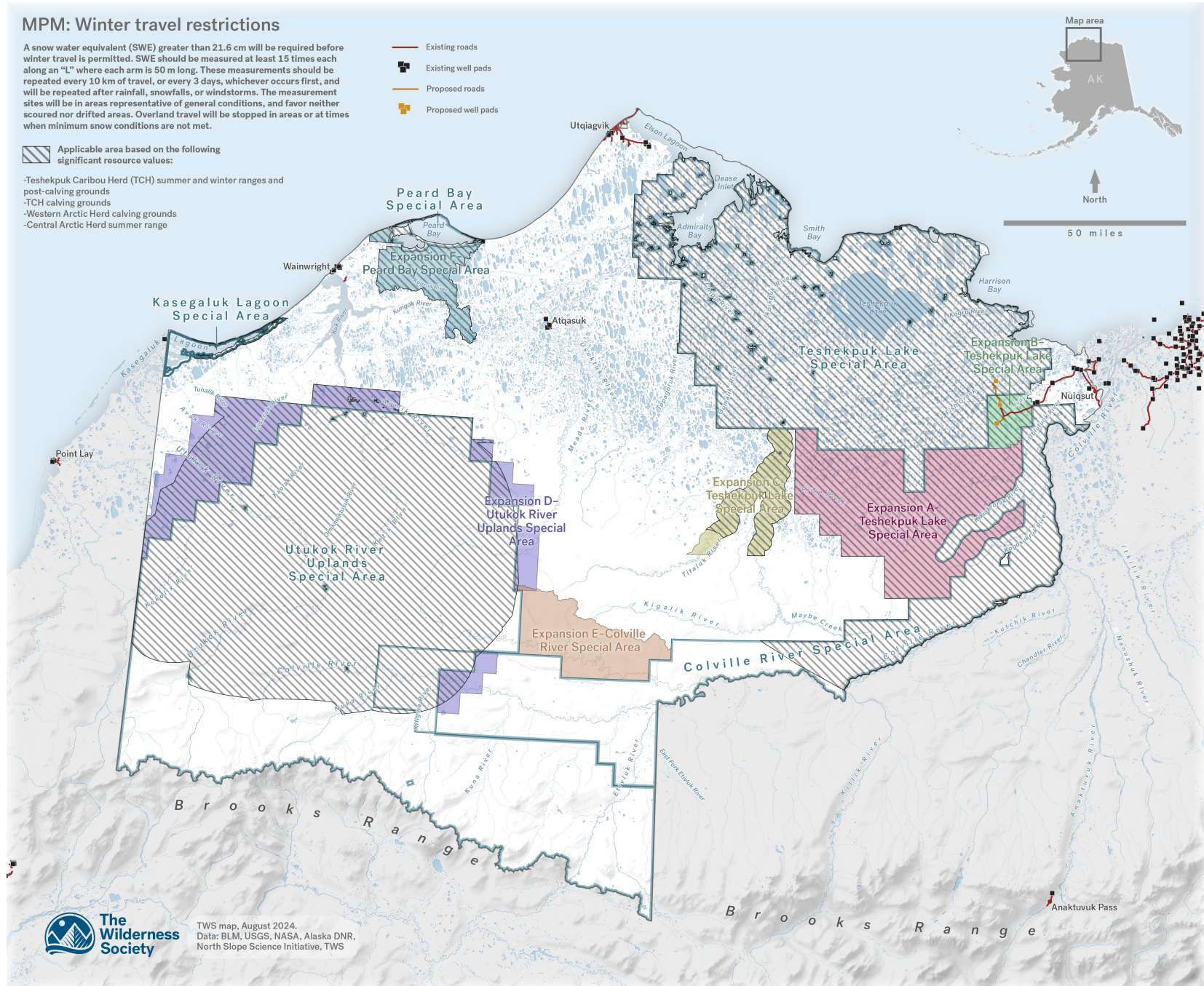


Figure 5. Approximate coverage area for MPMs A-2.1, A-3.2, B-1.2, B-3.2, and D-1.2.