

# APPENDIX B

Figures for:  
Assessment of ecological and  
cultural values within the  
National Petroleum Reserve –  
Alaska

## Appendix B: High resolution maps

*Figures included in this appendix:*

### File B-1

**Figure 2.1.** Land ownership within and surrounding the NPR-A.

**Figure 2.2.** Map of Arctic Iñupiat communities and outposts, tribal lands, Native allotments, and subsistence camps and cabins within and surrounding the NPR-A.

**Figure 2.3.** Existing development and current federal oil and gas leases within the NPR-A and state leases on surrounding lands and waters.

**Figure 2.4.** Generalized geology within the NPR-A and surrounding lands and waters.

**Figure 2.5.** Ecological landscapes within the NPR-A and surrounding lands and waters.

**Figure 2.6.** Land cover types within the NPR-A and nearby areas.

### File B-2

**Figure 2.7.** Major Arctic rivers, lakes, and lagoons within the NPR-A and nearby areas.

**Figure 3a.3.** Seasonal ranges of the three caribou herds that use lands within the National Petroleum Reserve – Alaska.

**Figure 3a.4.** Teshekpuk Caribou Herd primary calving area.

**Figure 3a.5.** Western Arctic Herd calving area.

**Figure 3b.2.** Estimated channel depth for the Colville River watershed.

**Figure 3b.3.** Predicted intrinsic potential (IP) for Broad Whitefish spawning habitat within the Colville River Special Area and the Utukok River Uplands Special Area.

**Figure 3b.4.** Estimated floodplains and terraces for Colville River watershed within the Colville River Special Area and the Utukok River Uplands Special Area.

**Figure 3b.5.** Estimated floodplains and terraces for Colville River watershed within the Colville River Special Area between Umiat and Ocean Point.

**Figure 3b.6.** Predicted IP for Broad Whitefish spawning habitat within the Colville River Special Area.

**Figure 3b.7.** Estimated channel depth for the Colville River watershed within the Colville River Special Area between Umiat and Ocean Point.

**Figure 4.7.** Indigenous lifeways, depicting traditional trade routes with historic and recent subsistence camps.

### File B-3

**Figure 5a.1.** Intact lands within the NPR-A.

**Figure 5a.2.** Intact lands based on combined assessment of the human footprint and mammal intactness.

**Figure 5b.1.** Wildness across the North Slope of Alaska.

**Figure 5b.2.** Wildness within the National Petroleum Reserve – Alaska.

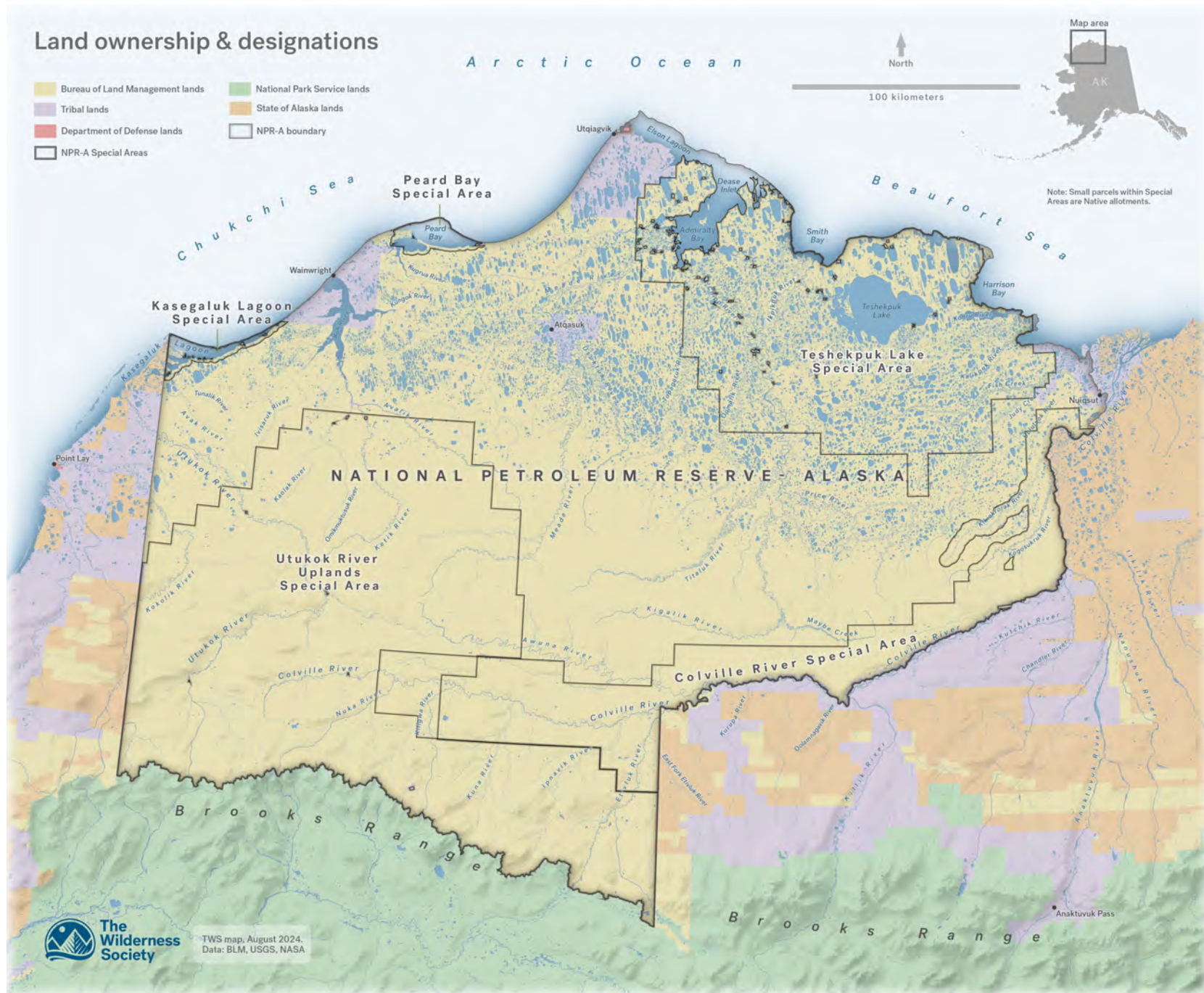
**Figure 5c.1.** Top 20% highest soil carbon locations down to 30-cm depth.

**Figure 5c.2.** Top 10% global areas for soil carbon down to 200-cm depth.

**Figure 5d.1.** Terrestrial ecosystem representation across the North Slope of Alaska.

**Figure 5d.2.** Terrestrial ecosystem representation within the National Petroleum Reserve – Alaska.

**B-1**



**Figure 2.1.** Land ownership within and surrounding the NPR-A. Tribal, State of Alaska, and Bureau of Land Management lands represent the dominant land ownership.

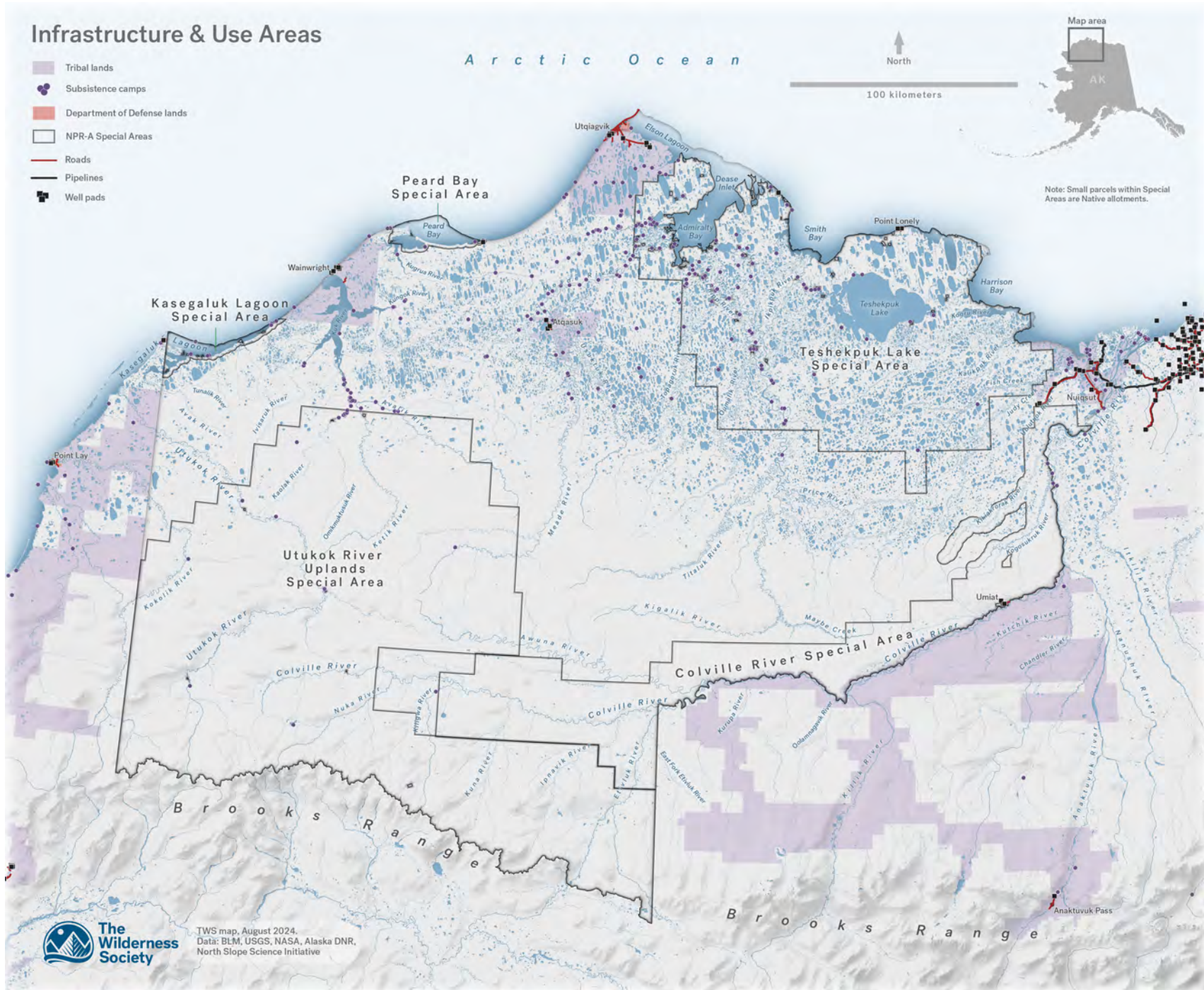
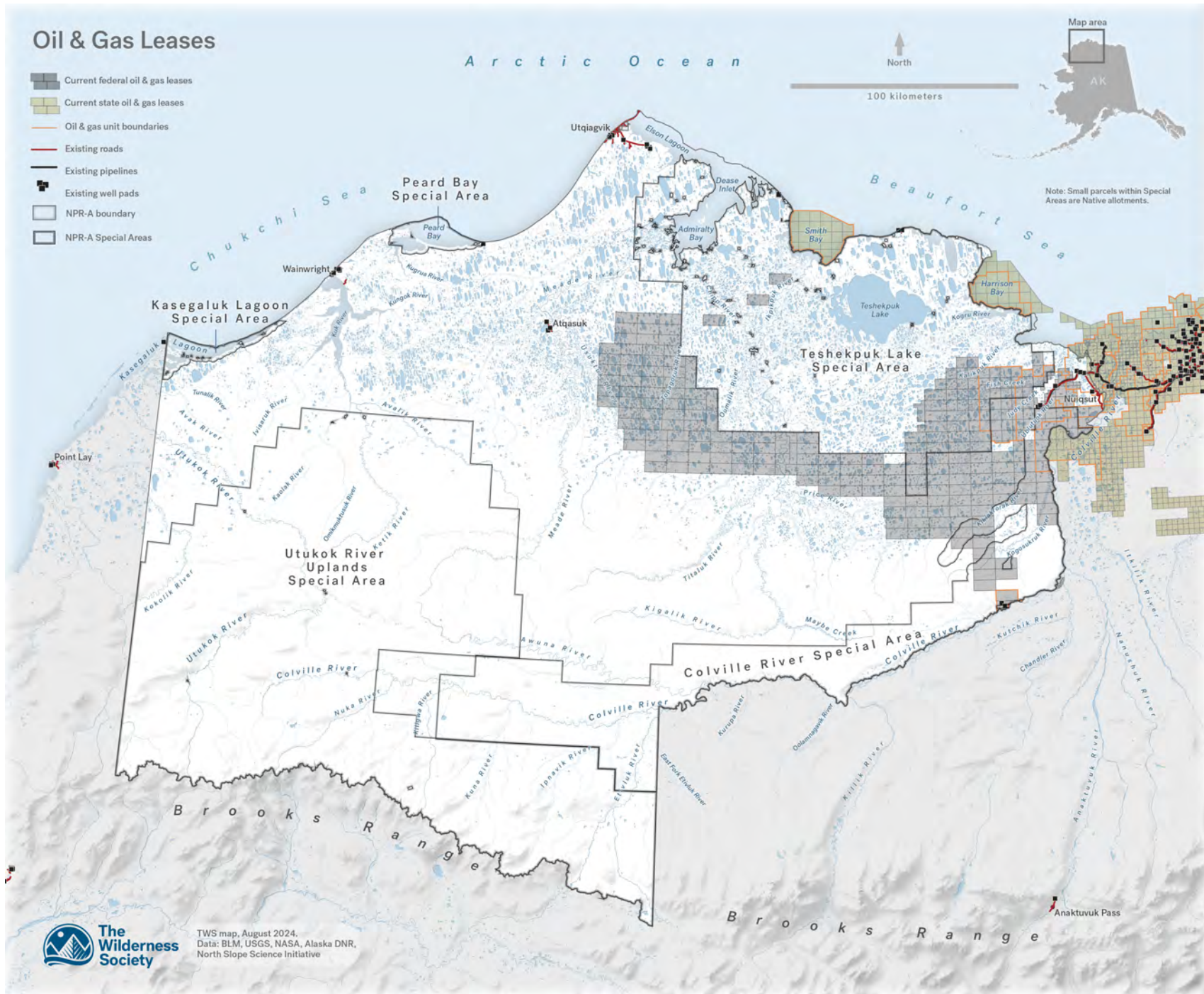
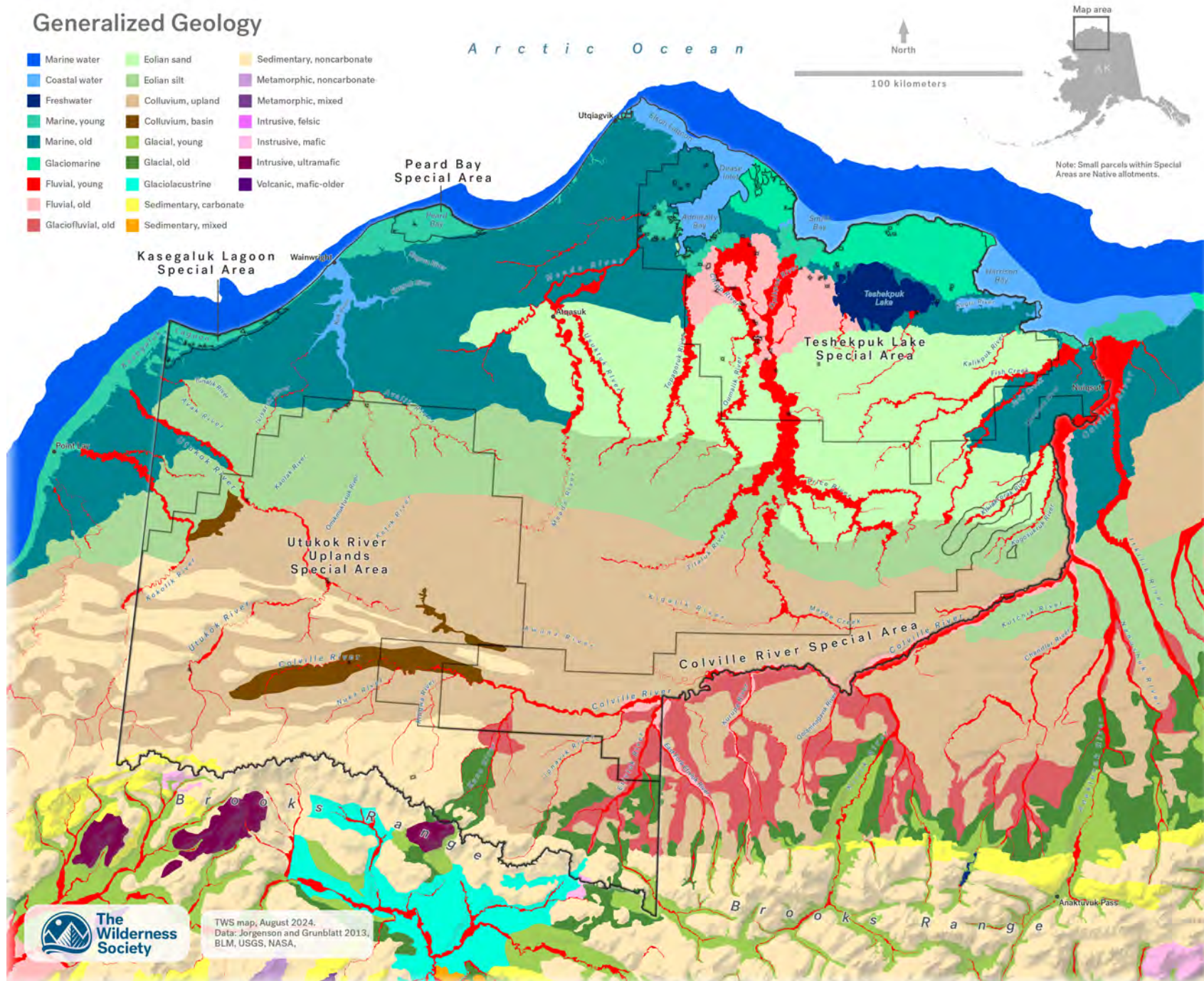


Figure 2.2. Map of Arctic Iñupiat communities and outposts, tribal lands, Native allotments, and subsistence camps and cabins within and surrounding the NPR-A.



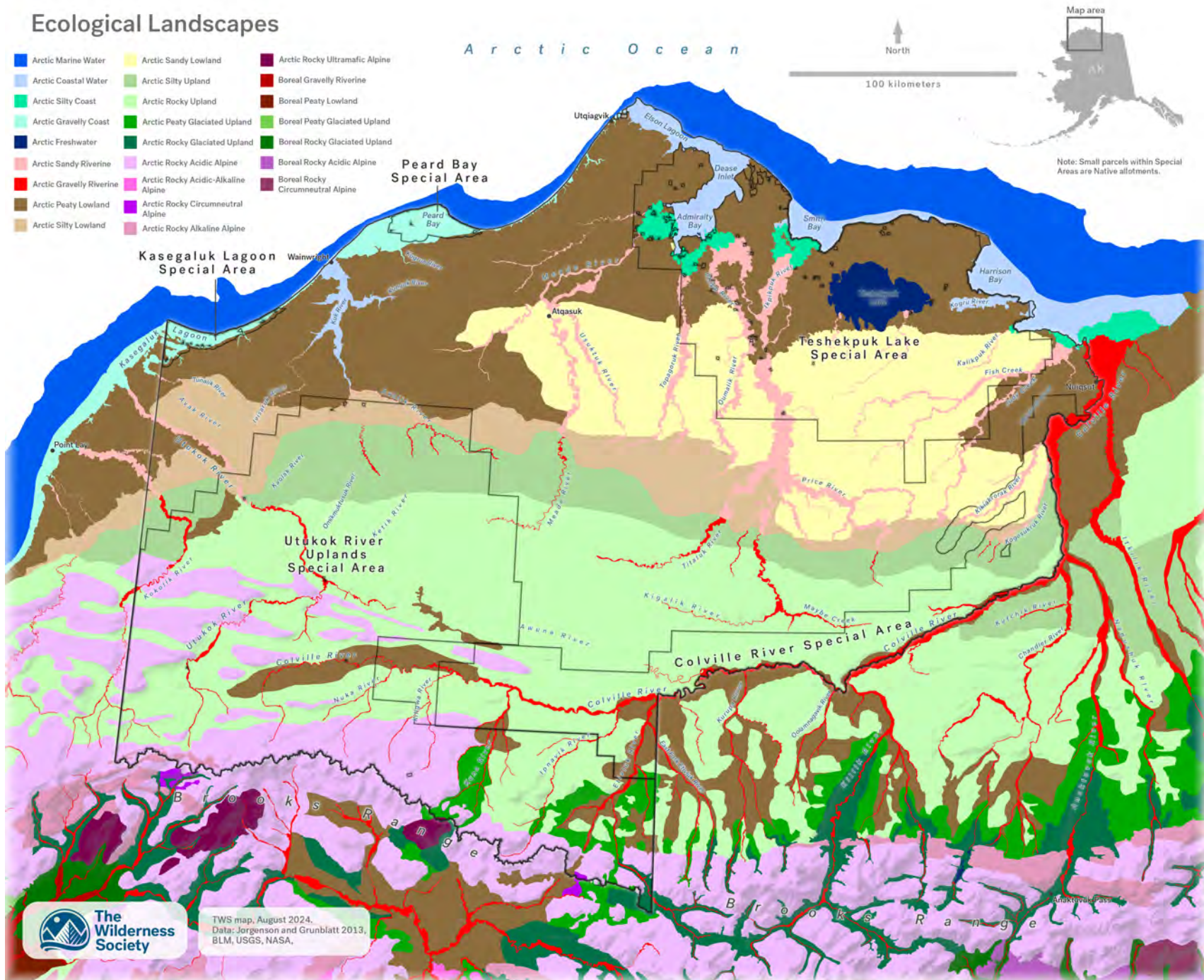
**Figure 2.3.** Existing development and current federal oil and gas leases within the NPR-A and state leases on surrounding lands and waters.



**Figure 2.4.** Generalized geology within the NPR-A and surrounding lands and waters. Data source: Jorgenson and Grunblatt (2013).

# Ecological Landscapes

- |                          |                                     |                                   |
|--------------------------|-------------------------------------|-----------------------------------|
| Arctic Marine Water      | Arctic Sandy Lowland                | Arctic Rocky Ultramafic Alpine    |
| Arctic Coastal Water     | Arctic Silty Upland                 | Boreal Gravelly Riverine          |
| Arctic Silty Coast       | Arctic Rocky Upland                 | Boreal Peaty Lowland              |
| Arctic Gravelly Coast    | Arctic Peaty Glaciated Upland       | Boreal Peaty Glaciated Upland     |
| Arctic Freshwater        | Arctic Rocky Glaciated Upland       | Boreal Rocky Glaciated Upland     |
| Arctic Sandy Riverine    | Arctic Rocky Acidic Alpine          | Boreal Rocky Acidic Alpine        |
| Arctic Gravelly Riverine | Arctic Rocky Acidic-Alkaline Alpine | Boreal Rocky Circumneutral Alpine |
| Arctic Peaty Lowland     | Arctic Rocky Circumneutral Alpine   | Boreal Rocky Circumneutral Alpine |
| Arctic Silty Lowland     | Arctic Rocky Alkaline Alpine        |                                   |



TWS map, August 2024.  
 Data: Jorgenson and Grunblatt 2013,  
 BLM, USGS, NASA.

Figure 2.5. Ecological landscapes within the NPR-A and surrounding lands and waters. Data source: Jorgenson and Grunblatt (2013).



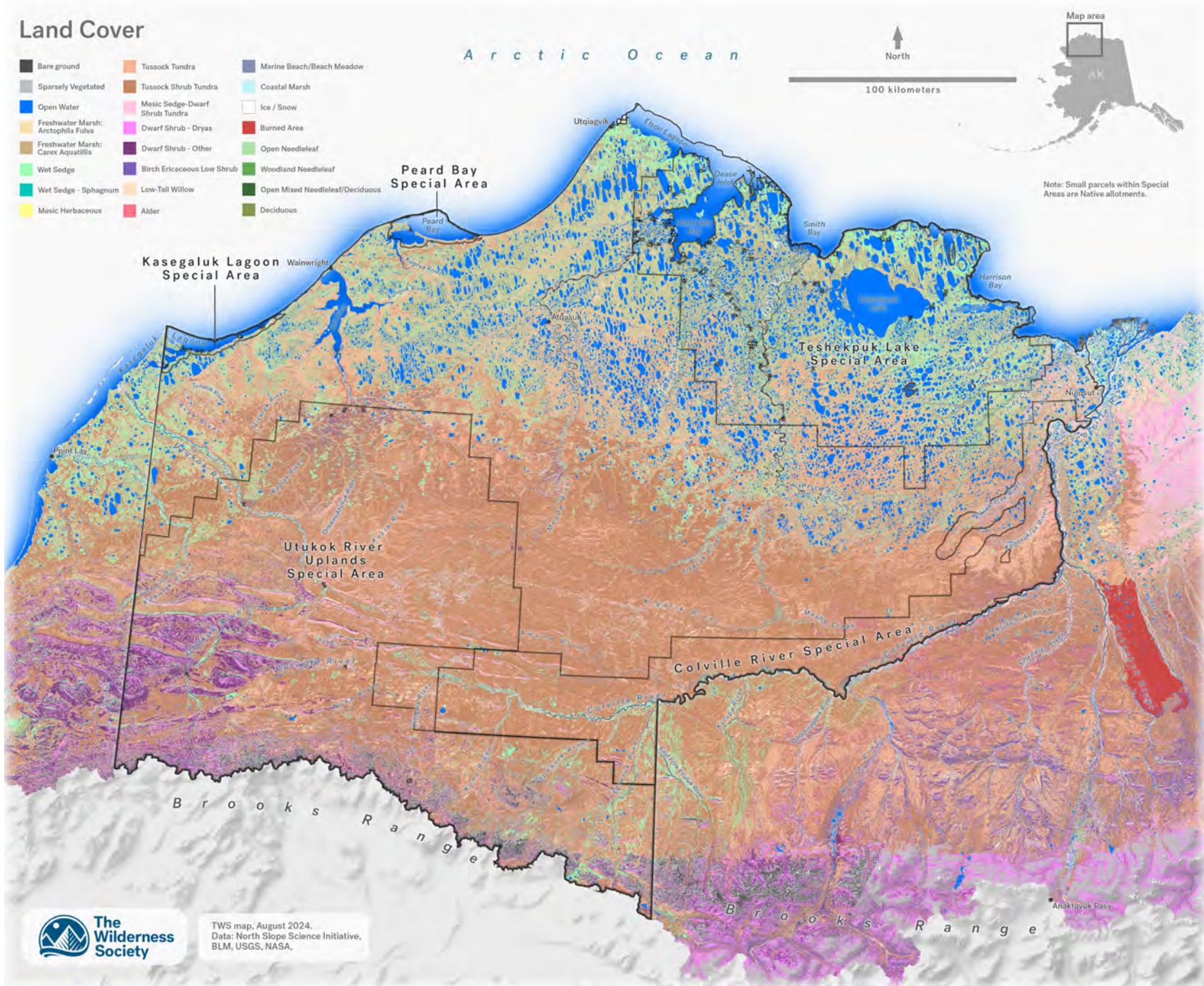


Figure 2.6. Land cover types within the NPR-A and nearby areas. Modified from Ducks Unlimited (2013) and Boggs et al. (2014). See Section 5d for details.