

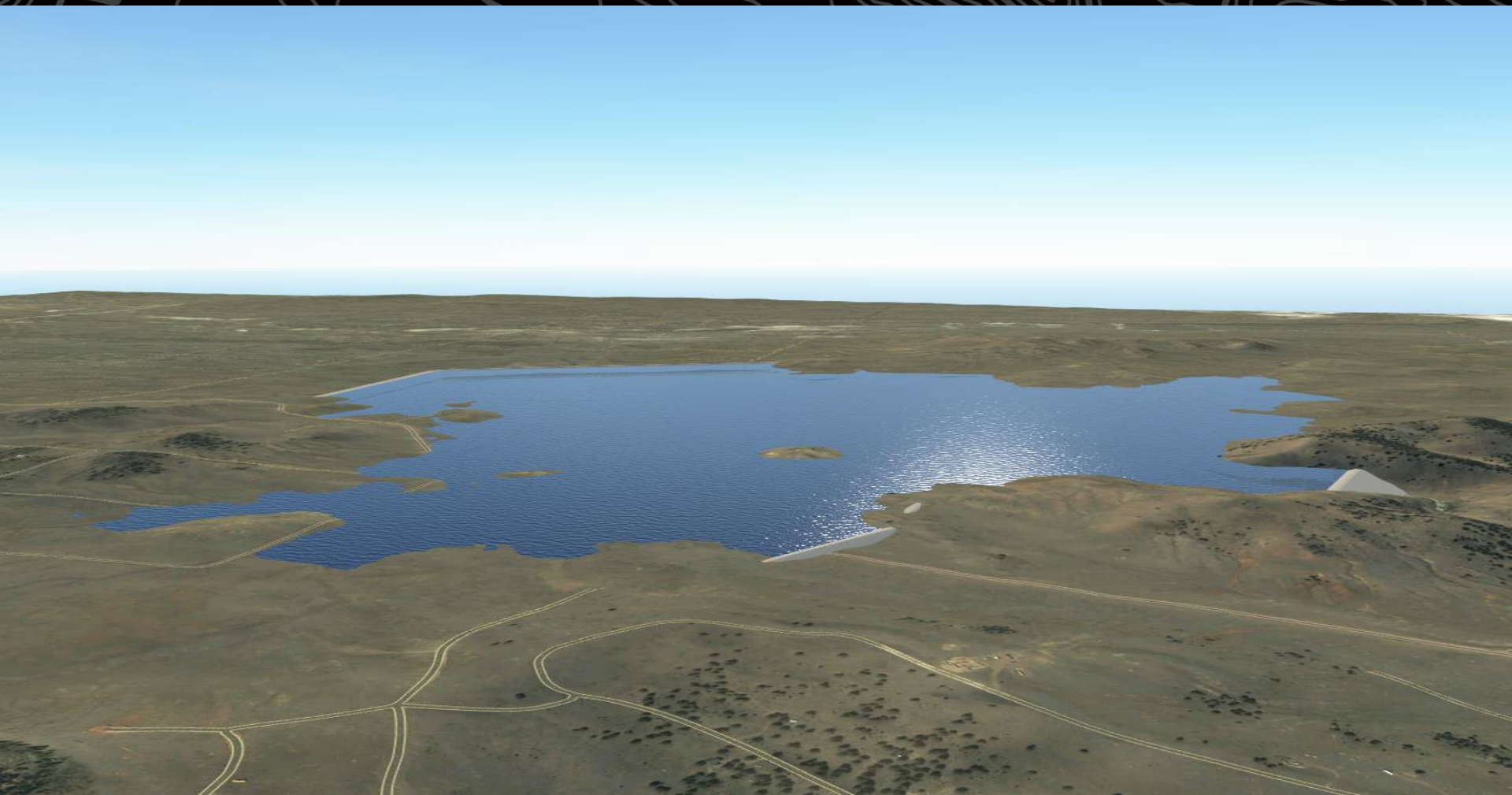


U.S. Department of the Interior
Bureau of Land Management

Royal Gorge Field Office

Wild Horse Reservoir EIS

November 2024 RAC Meeting





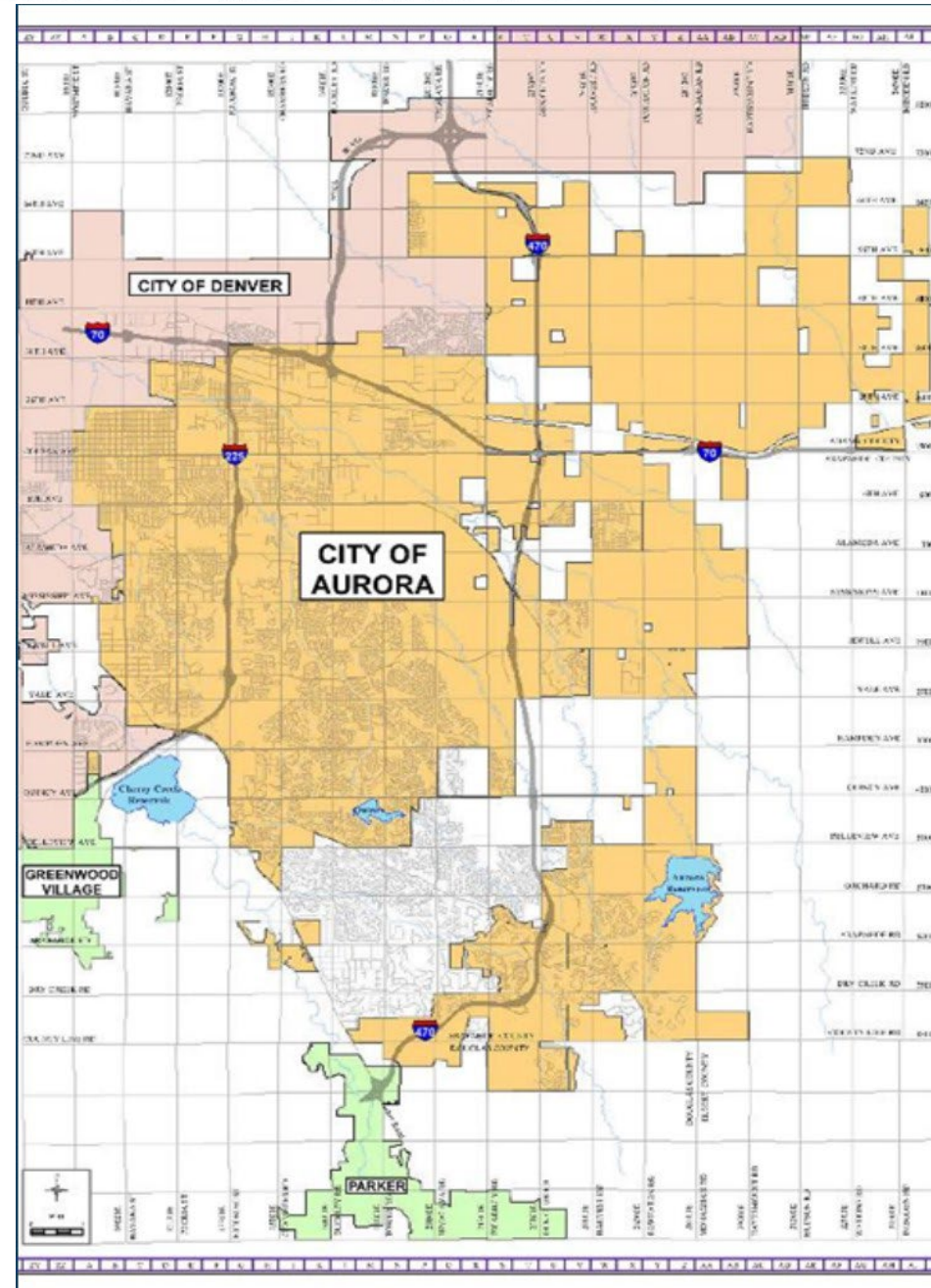
Background

City of Aurora

- Current population: 386,000
- 160 sq. miles and currently half built

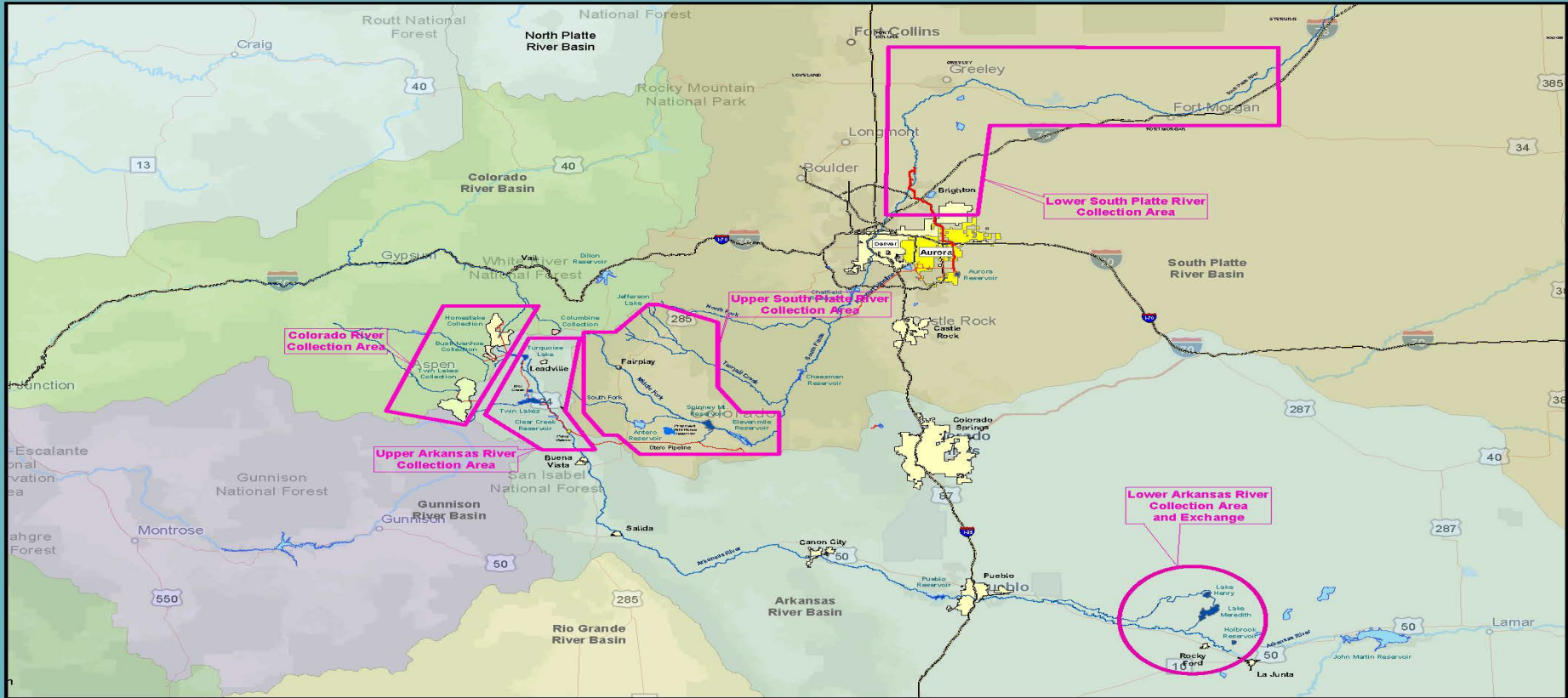
Aurora Water

- Obtains water from three major watersheds:
 - South Platte River – 50%
 - Arkansas River – 25%
 - Colorado River – 25%





Background

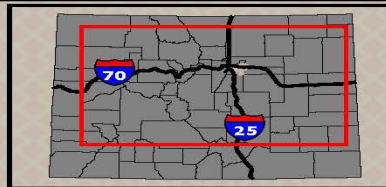


Aurora Water Supply Aurora Water

gwhitney@auroragov.org | 303-579-2990 | www.auroragov.org
15151 E. Alameda Pkwy, Aurora, CO 80012 USA

February 9, 2022

Aurora is Worth Discovering!



Legend

- Delivery Infrastructure
- Streams/Rivers

Miles 0 1.25 2.5 5

DISCLAIMER: The City of Aurora, Colorado, makes no warranty or guarantee, express or implied, as to the completeness, accuracy, or correctness of this data, nor shall the City incur any liability from any inaccuracy, incompleteness, or misleading information contained therein. The City makes no warranty, either express or implied, of the value, design, condition, title, merchantability, or fitness for a particular purpose. The City shall not be liable for any direct, indirect, incidental, consequential, punitive, or special damages, whether foreseeable or unforeseeable, arising out of the authorized or unauthorized use of this data or the inability to use this data or out of any breach of warranty whatsoever.



Preliminary Purpose and Need

BLMs Purposed and Need:

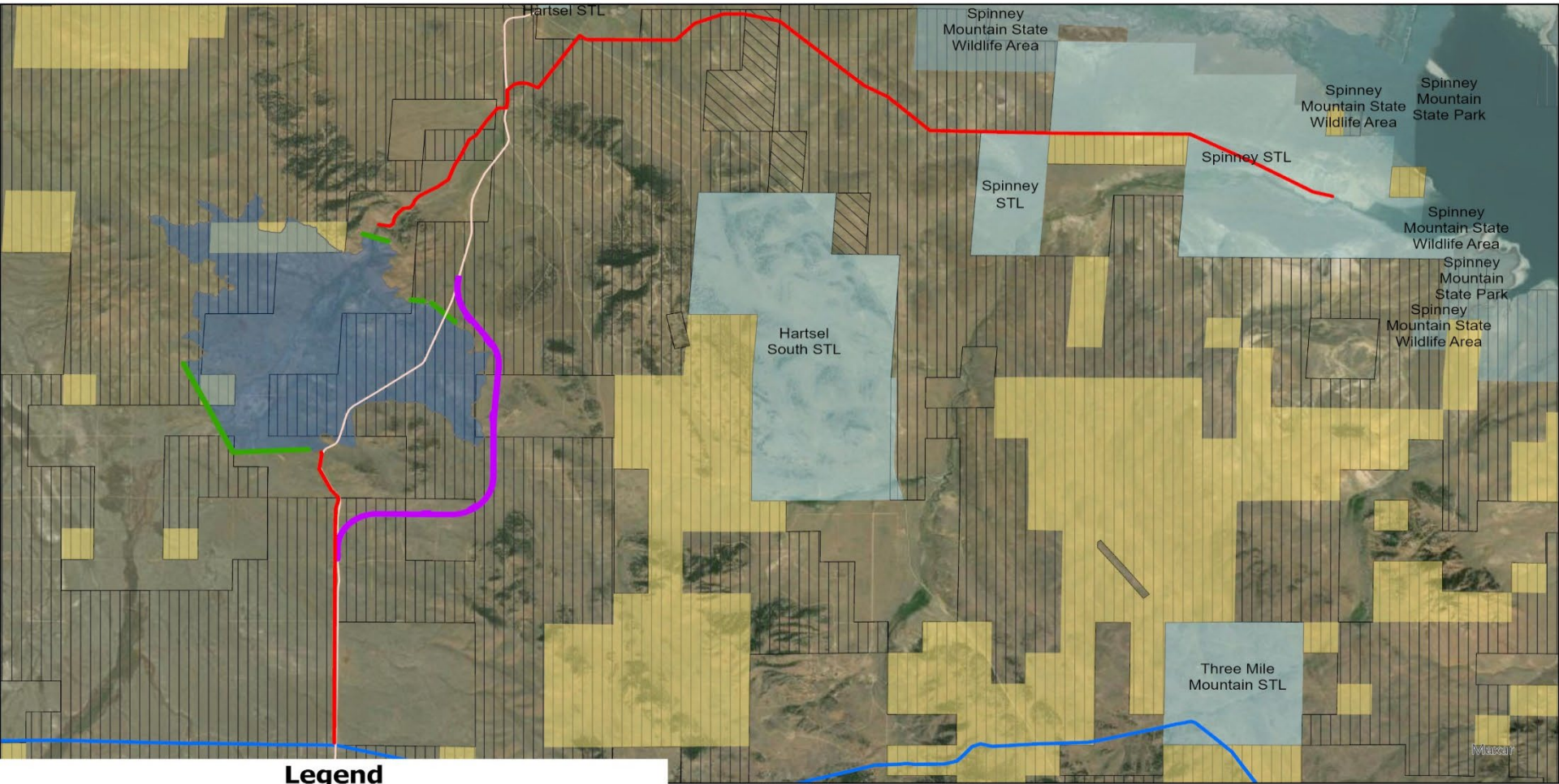
Respond to Aurora Water's SF-299 Application for a Right-of-Way and mineral materials disposal.

Aurora Waters Goals and Objectives:

The Goal and Objective of the Wild Horse Reservoir Project is to meet Aurora Water's 2075 demands while maintaining an accessible emergency reserve.



Proposed Wild Horse Reservoir



Legend

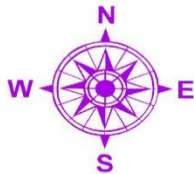
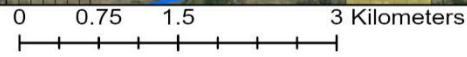
- Proposed Reservoir
- Proposed Dams
- Proposed Pipeline
- Potential CR53 realignment
- Otero Pipeline
- County Road 53

Surface Management

- Bureau of Land Management
- State
- State, County, City: Recreation Areas

Federal Mineral Estate

- All Minerals
- Coal Only
- No Minerals
- Oil and Gas Only
- Oil, Gas and Coal Only
- Other





Proposed Action

- 93,500-acre-foot capacity
- 1,650 acres surface area
- 2.3 miles inlet pipeline
- 8.5 miles outlet pipeline
- Approximately 200 acres public lands Right-of-Way
- Federal mineral material sale for construction
- County road realignment



Cooperating Agencies

Federal and State

Federal

U.S. Army Corps of Engineers
U.S. Bureau of Reclamation
U.S. Environmental Protection Agency

State agencies

Colorado Department of Natural
Resources
Colorado Parks and Wildlife

Local

Park County
Headwater Authority of the South Platte
Southeastern Colorado Water
Conservancy District



Schedule

Target Timeline	Key Milestone
Fall 2025/Winer 2026	Initial Action Notice and Notice of Intent
2026-2027	EIS



U.S. Department of the Interior
Bureau of Land Management

Questions?

