

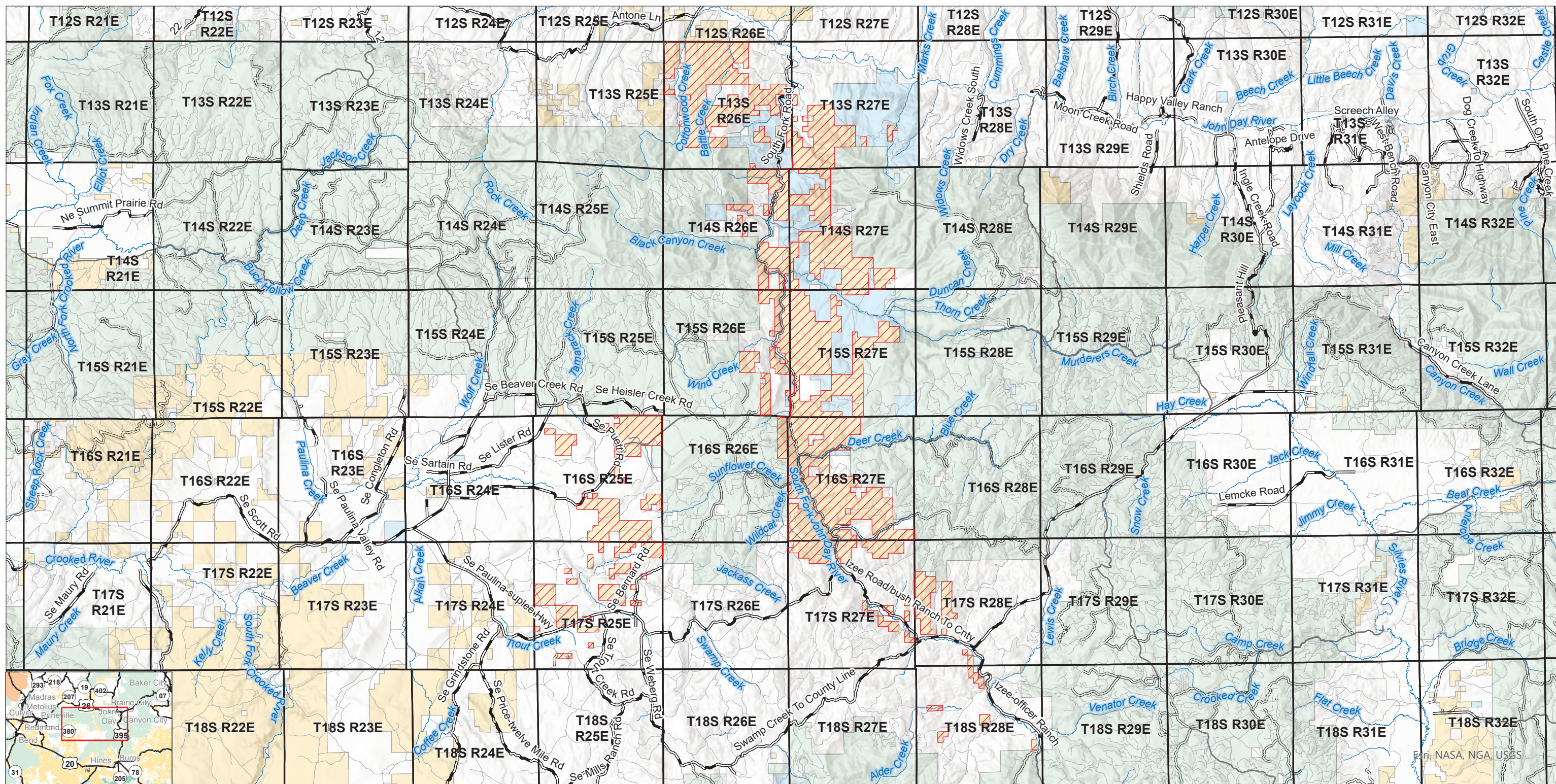


South Fork John Day River - BLM Closure

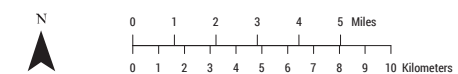
Bureau of Land Management
Prineville District Office
3050 NE 3RD St
Prineville, OR 97754
(541) 416-6700



9/3/2024



- BLM Closure
- Gravel Road
- County Road
- Administered Lands
- USDA Forest Service (USFS)
- Paved Road
- Natural/Unknown Surface
- Bureau of Land Management (BLM)
- State Land
- Private/Other



No warranty is made by the Bureau of Land Management as to the accuracy, reliability, or completeness of this map or the data displayed for individual use or aggregate use with other data.