

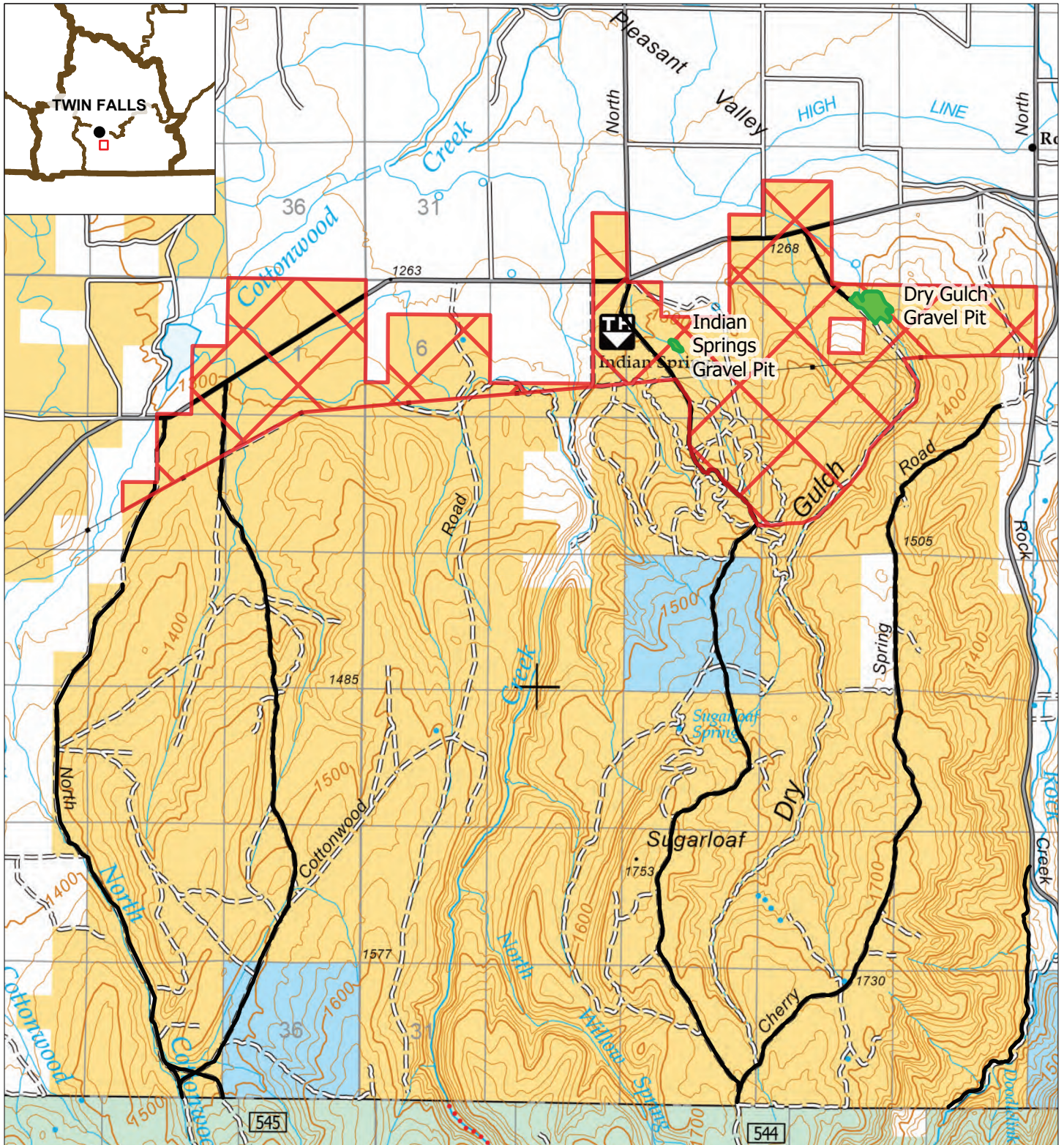


Recreational Shooting Closure

Bureau of Land Management
Burley Field Office
15 E. 200 S.
Burley, ID 83318
208-677-6600



9/12/2024



Surface Management Agency (SMA)

Bureau of Land Management (BLM)

Private

USDA Forest Service (USFS)

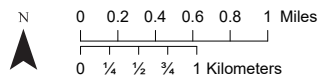
State of Idaho

BLM Closure

Gravel Pits of Concern

Primary BLM Roads

Power Line



No warranty is made by the Bureau of Land Management as to the accuracy, reliability, or completeness of this map or the data displayed for individual use or aggregate use with other data.

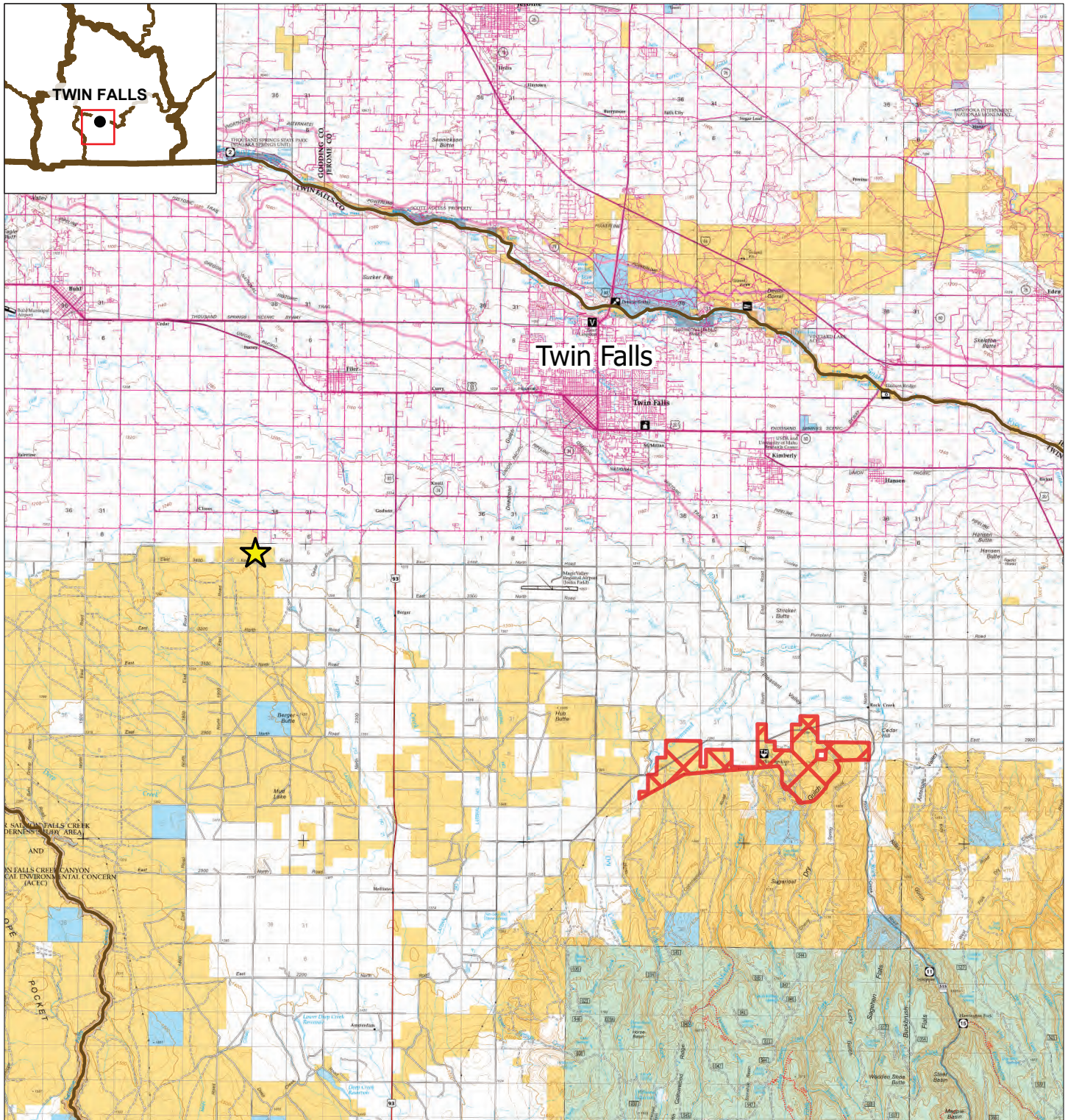




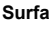
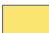


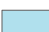



Alternative Shooting Location

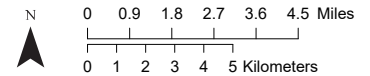
Bureau of Land Management
Burley Field Office
15 E. 200 S.
Burley, ID 83318
208-677-6600



9/12/2024



-  **Alternative Shooting Location**
-  **BLM Closure**
-  **Surface Management Agency (SMA)**
-  **Bureau of Land Management (BLM)**
-  **Private**
-  **USDA Forest Service (USFS)**
-  **State of Idaho**
-  **Bureau of Reclamation**
-  **Military Reservations and Corps of Engineers**
-  **National Park Service (NPS)**



No warranty is made by the Bureau of Land Management as to the accuracy, reliability, or completeness of this map or the data displayed for individual use or aggregate use with other data.