



OREGON_WASHINGTON Grants Pass

Field Office

Recreation Fee Program Spending & Accomplishment Highlights 2023

Overlook Parking Improvements

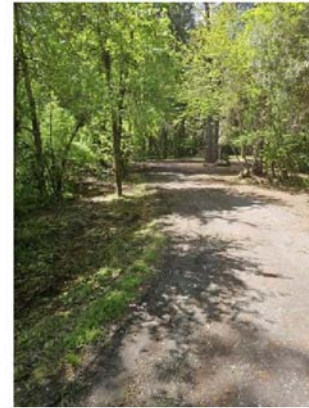
Rainbow Rec Site Improvements



New Grading and Gravel at Hellgate Bridge Overlook

Amount Expended: \$10,000.00

Surrounded by the lush forests and rugged mountains of Southern Oregon, the Rogue Wild and Scenic River is known for its outstanding whitewater and scenic beauty. In addition to rafting the Rogue, there are also numerous access points for day use recreation. BLM used funds from the Recreation Fee Program to improve the parking area and overlook near the Hellgate Bridge. The surface was graded to fix drainage issues and potholes, and a fresh layer of road base was added and compacted.



Brushing Access Road at Rainbow Rec Site

Amount Expended: \$15,000.00

The Rainbow Recreation Site is one of many popular access points along the Rogue Wild and Scenic River. Recreation Fee Program funds were used to improve the existing access road by fixing potholes and adding road base. A tracked skid steer with a masticating head was contracted to trim vegetation along the overgrown access road and surrounding edges of the recreation site to make it safer and more inviting to visitors.

Revenue & Expenditures

FY23 Revenue	
Recreation Use Permits (RUPs)	\$0.00
Special Recreation Permits (SRPs)	\$282,729.00
Individual Special Recreation Permits	\$69,655.00
Interagency Passes	\$120.00
Total Recreation Fee Revenue for FY23	\$352,504.00
Carryover from Prior Years	\$375,601.00
Total Available Funds for FY23	\$728,105.00

FY23 Expenditures	
Repair & Maintenance	\$54,701.35
Visitor Services	\$129,032.16
Law Enforcement	\$0.00
Inventory, Monitoring and Planning	\$323,505.97
Collections/Overhead	\$1,114.93
Total Recreation Fee Expenditures for FY23	\$508,354.41
Total Available Funds for FY24	\$219,750.59



Other Accomplishments

- River Rangers patrolled the Rogue, cleaned up litter, and supported other natural resources staff with surveys.
- Upgraded the water systems at the Rogue River Ranch, and the Rand Visitor Center and administrative facility.
- Carried out emergency roof stabilization of the Rogue River Ranch Museum.
- Fully staffed the Smullin Visitor Center at Rand, providing visitor and river permitting information to the public.
- Routine annual maintenance of all river access sites, including sign installation and replacement.

Vicinity Map



Planned Activities



River Ranger Removing Trash from the Rogue

- Carry out routine annual maintenance at all river facilities, including mowing, sign install and/or replacement
- Improve parking at access points along the river corridor
- Fully staff visitor center, river ranger, and maintenance crews
- Use Northwest Youth Corps to maintain the Rogue River Trail
- Continue to support the other programs that perform work on the river

FY24 Planned Expenditures

Repair & Maintenance	\$120,000.00
Visitor Services	\$80,000.00
Law Enforcement	\$10,000.00
Inventory, Monitoring and Planning	\$120,000.00
Collections/Overhead	\$10,000.00
Total Planned Expenditures for FY24	\$340,000.00
Total Available Funds for FY24	\$219,750.59
FY24 Balance after Planned Expenditures*	\$-120,249.41

*Figure excludes projected revenue for FY24

Grants Pass

Recreation Fee Program Contact

Phone Number: (541) 471-6500

Email: BLM_OR_MD_Mail@blm.gov

Web: <https://www.blm.gov/office/grants-pass-interagency-office>

[Published FLREA Triennial Report](https://doi.sciencebase.gov/flrea/)

<https://doi.sciencebase.gov/flrea/>

[Published FLREA Annual Revenue and Spending Plans](https://www.blm.gov/programs/recreation/permits-and-fees/flrea-revenue)

<https://www.blm.gov/programs/recreation/permits-and-fees/flrea-revenue>

[Bureau of Land Management's Blueprint for 21st Century Outdoor Recreation](https://www.blm.gov/sites/default/files/docs/2023-08/Blueprint%20for%2021st%20Century%20Outdoor%20Recreation508.pdf)

<https://www.blm.gov/sites/default/files/docs/2023-08/Blueprint%20for%2021st%20Century%20Outdoor%20Recreation508.pdf>

Recreation fee dollars are an investment in outdoor recreation. Current and future generations benefit as 100% of the funds collected are reinvested in the facilities and services that visitors enjoy, use, and value.

