



United States Department of the Interior



BUREAU OF LAND MANAGEMENT
Medford District Office
3040 Biddle Road, Medford, Oregon 97504
<http://www.blm.gov>

EMERGENCY CLOSURE OF PUBLIC LANDS

AGENCY: Bureau of Land Management, Medford District, Oregon.

ACTION: Temporary Closure of Public Lands

SUMMARY: Pursuant to 43 CFR 9268.3(d) and 43 CFR 8364.1, the Bureau of Land Management (BLM) hereby provides notice that effective immediately, the public lands described below are closed to all forms of public access. This action is in response to the Salt Creek Fire that is currently active in the area. The BLM is closing public lands in order to reduce conflicts with emergency crews and allow for fire suppression, as well as to ensure public safety.

AFFECTED AREA: Please see attached map. All BLM-managed public lands, roads, sites, and trails in the following Jackson County Evacuation Zones: JAC 316, JAC 317, JAC 319, JAC 321, JAC 325. This area includes BLM lands east of Salt Creek Road, north of Highway 140, south of Butte Falls Highway to the boundary with U.S. Forest Service lands.

All or portions of BLM administered lands in the following sections are affected by this closure: Township 35 south, Range 2 east, Sections 13, 23, 25, 27, 31, 32, 33, 35. Township 35 south, Range 3 east, Sections 19, 31, Township 36 south, Range 2 east, Sections 1-7, 9, 11, 13, 14, 15, 22, 23, 25, 26, Willamette Meridian.

Please see attached map.

DATES: This closure is effective immediately and will remain in effect until such time as conditions allow for safe use of the public lands.

FOR FURTHER INFORMATION CONTACT: Jeanne Klein, Acting Field Manager, Butte Falls Field Office, 3040 Biddle Road, Medford OR 97504, telephone (541) 618-2200. This notice is also available online at <https://www.blm.gov/programs/public-safety-and-fire/fire-and-aviation/regional-info/oregon-washington/fire-restrictions>.

DISCUSSION OF THE RULES: The public must not enter the closure area. All uses within the closure area are prohibited, including hiking, hunting, fishing, camping and driving. Exceptions to these prohibitions are noted below under Exemptions. You must not enter closed areas. This restriction will be rescinded once fire conditions improve and public and firefighter safety can be ensured.

EXEMPTIONS: The following persons are exempt from the provisions of this Order:

1. Any Federal, State, or Local Officer, or member of an organized medical, rescue or firefighting force engaged in fire, emergency, or law enforcement activities, or public utility employees engaged in emergency repairs;

2. BLM employees, contractors, or agents engaged in official duties;
3. Individuals operating within the scope of their official and legitimate governmental duties;
4. Individuals with valid existing rights for access (e.g., Reciprocal and Unilateral Right of Way agreement holders, permit holders, permittees or lease holders, or internal landowners); and
5. Parties who carry written approval by the BLM Authorized Officer (Field Manager or District Manager) allowing access to the described public lands.

PENALTIES: Any person who violates this may be tried before a United States Magistrate and fined in accordance with 18 U.S.C. 3571, imprisoned for no more than 12 months, or both. Vehicles found in violation of this order may be removed.

EFFECTIVE: This Order is effective immediately upon signature.

ELIZABETH
BURGHARD
Digitally signed by
ELIZABETH
BURGHARD
Date: 2024.07.10
21:05:08 -07'00'

Elizabeth Burghard, District Manager

T34S R01E

T34S R02E

T34S R03E

Salt Creek Fire - Public Lands Closure



T34S R01E

T34S R03E

T35S R01E

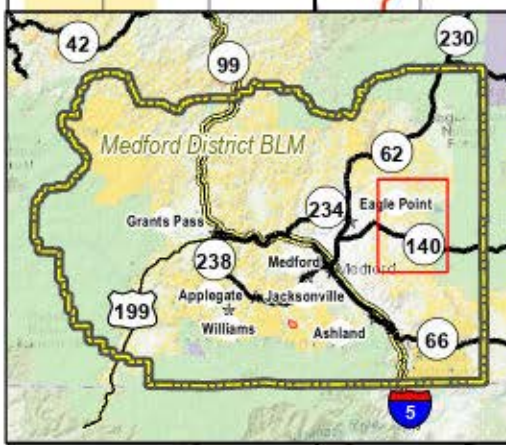
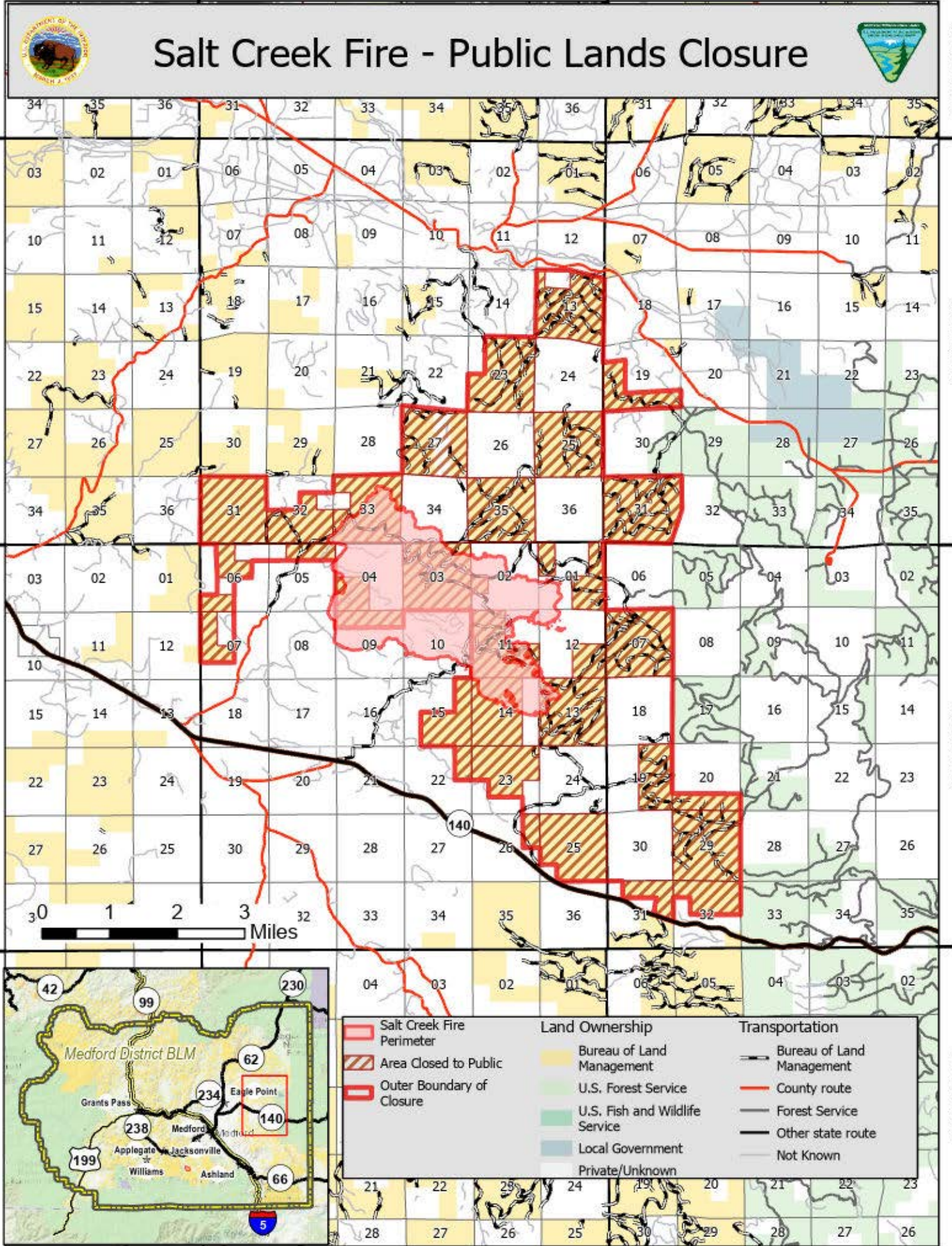
T35S R03E

T36S R01E

T36S R03E

T37S R01E

T37S R03E



Salt Creek Fire Perimeter	Land Ownership	Transportation
Area Closed to Public	Bureau of Land Management	Bureau of Land Management
Outer Boundary of Closure	U.S. Forest Service	County route
	U.S. Fish and Wildlife Service	Forest Service
	Local Government	Other state route
	Private/Unknown	Not Known

T37S R01E

T37S R02E

T37S R03E