



# United States Department of the Interior

BUREAU OF LAND MANAGEMENT  
Northwest Oregon District Office  
1717 Fabry Road SE, Salem, Oregon 97306  
<http://www.blm.gov>



## EMERGENCY CLOSURE OF PUBLIC LANDS: FPO-ORN-00500-2024-01

**AGENCY:** Bureau of Land Management, Northwest Oregon District, Oregon.

**ACTION:** Temporary Closure of Public Lands

**SUMMARY:** Pursuant to 43 CFR 9268.3(d) and 43 CFR 8364.1, the Bureau of Land Management (BLM) hereby provides notice that effective immediately, the public lands described below are closed to all forms of public access. This action is in response to multiple fires currently active in the area. The BLM is closing public lands in order to provide for public safety, reduce conflicts with emergency crews, and allow for fire suppression and burned area site recovery.

**AFFECTED AREA:** All BLM-managed public lands, roads, sites, and trails in T22S, R1W, and T23S, R1W Sections 1-3, 11-14, 22-24, 26-27, 33-34.

**DATES:** This closure is effective immediately and will remain in effect until such time as conditions allow for safe use of the public lands.

**FOR FURTHER INFORMATION CONTACT:** Christopher Finn, Field Manager, 3106 Pierce Parkway, Springfield, OR 97477, telephone (541) 510-6426.

**DISCUSSION OF THE RULES:** The public must not enter the closure area. All uses within the closure area are prohibited. Exceptions to these prohibitions are noted below under Exemptions. Incidents of extreme fire behavior and extreme fire danger have been observed throughout the area. You must not enter closed recreation sites.

**EXEMPTIONS:** The following persons are exempt from the provisions of this Order:

1. Any Federal, State, or Local Officer, or member of an organized medical, rescue or firefighting force engaged in fire, emergency, or law enforcement activities, or public utility employees engaged in emergency repairs.
2. BLM employees, contractors, or agents engaged in official duties:
3. Individuals operating within the scope of their official and legitimate governmental duties.
4. Parties who carry written approval signed by the BLM Authorized Officer (Field Manager or District Manager) allowing access to the described public lands.

**PENALTIES:** Any person who violates this may be tried before a United States Magistrate and fined in accordance with 18 U.S.C. 3571, imprisoned for no more than 12 months, or both. Vehicles found in violation of this order may be removed.

**EFFECTIVE:** This Order is effective immediately upon signature.

CHRISTOPHER FINN  Digitally signed by  
CHRISTOPHER FINN  
Date: 2024.07.19 20:12:58 -07'00'

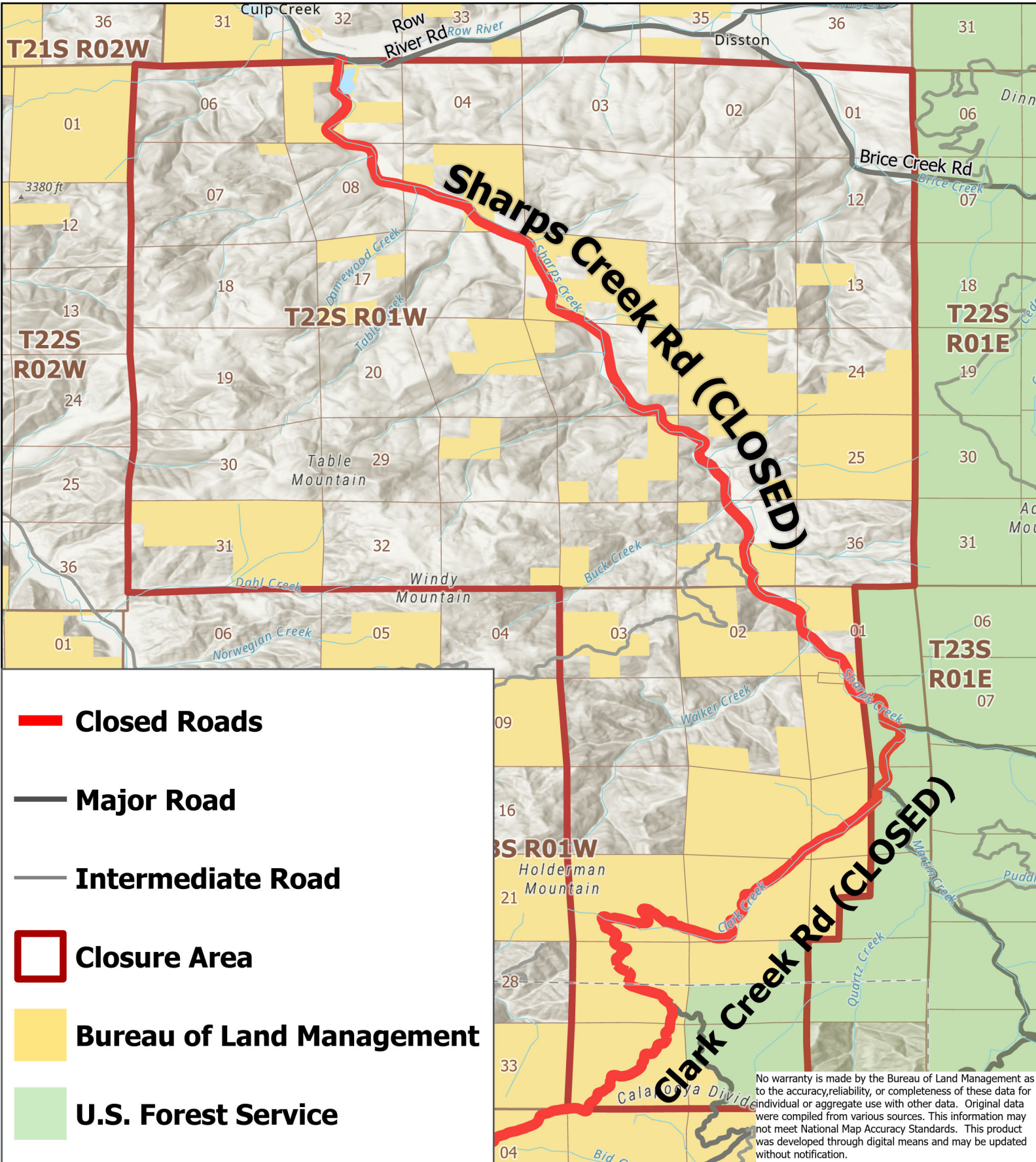
Field Manager, Upper Willamette Field Office

Date: 7/19/2024



# FIRE CLOSURE

Closure Order: FPR-ORN00500-2024-01



No warranty is made by the Bureau of Land Management as to the accuracy, reliability, or completeness of these data for individual or aggregate use with other data. Original data were compiled from various sources. This information may not meet National Map Accuracy Standards. This product was developed through digital means and may be updated without notification.