



U.S. Department of the Interior  
Bureau of Land Management

# BLM Shoshone Field Office Recreation Fee Sites Business Plan



**July 2024**

BLM Shoshone Field Office Recreation Sites Business Plan

**Recommendations, Reviews, and Approvals**

Recommended by:

---

Codie Martin, Shoshone Field Manager Date

Reviewed by:

---

Michael Courtney, Twin Falls District Manager Date

Approved by:

---

Peter Ditton, Idaho State Director Date

This business plan was prepared by the Bureau of Land Management’s Shoshone Field Office pursuant to the Federal Lands Recreation Enhancement Act of 2004 (16 U.S.C. 6801-6814) and BLM recreation fee program policies. It establishes future management goals and priorities for the Wilson Lake, Silver Creek, and Magic Reservoir campsites within the Shoshone Field Office.



# United States Department of the Interior

BUREAU OF LAND MANAGEMENT  
Shoshone Field Office  
400 West F Street  
Shoshone, Idaho 83352



In Reply Refer to:  
2932 (IDI03000)

Dear Reader,

I would like to present for your review and comment the Draft Business Plan for the Shoshone Field Office (SFO) Fee Sites Program. Currently there are no fee sites within the SFO. This draft business plan proposes to charge \$20/night at the Silver Creek and Wilson Lake Campgrounds, at all campgrounds at Magic Reservoir once they have been upgraded, and any campgrounds developed in the future. It also includes a \$10/day or \$75 annual fee for using the BLM boat ramps located at Magic Reservoir, Moonstone and West Magic, and once repaired, East Magic. The proposed fees will support public health and safety needs due to increased visitor use, and the cost of yearly operations and maintenance associated with these facilities. The rationale for the fees, comparison to fees at other campgrounds and boat launches with similar amenities, operating costs, and anticipated revenue is found in this business plan.

The Federal Land Policy and Management Act (FPLMA) authorizes the BLM to regulate the use of public lands, and the Federal Lands Recreation Enhancement Act (FLREA) authorizes the BLM to collect recreational fees when sites and areas meet specific criteria. With the increase in use and necessary facilities, these sites now meet or will meet the criteria outlined in FLREA. Other recreation sites within the SFO may undergo facility upgrades in the future and will then also meet FLREA guidelines.

The proposed fees outlined in this business plan would be initiated May 1, 2025 or 180 days following the publication of a *Federal Register* notice announcing the new fees. The business plan also outlines that future fee increases will be tied to the Western U.S. Consumer Price Index to keep up with any increases in management and maintenance costs.

A public comment period has been established to give you the opportunity to submit feedback on the proposed business plan and associated fee proposal. Comments are due by August 24, 2024. Comments will be accepted through the following means:

Email: [BLM\\_ID\\_ShoshoneOffice@blm.gov](mailto:BLM_ID_ShoshoneOffice@blm.gov)

U.S. Mail: BLM Shoshone Field Office, 400 West F Street, Shoshone, ID, 83352

Thank you for your interest in public lands.

Sincerely,

Codie Martin  
Field Manager

## Table of Contents

|    |   |    |
|----|---|----|
| 1  | Executive Summary.....  | 6  |
| 2  | Background and Authorities .....                                  | 7  |
| 3  | Introduction to the Field Office Recreation Program .....         | 8  |
| 4  | Description of Each Existing or Proposed Fee Site/Area .....      | 9  |
| 5  | Proposed Recreation Expanded Amenity Fee Rates.....               | 15 |
| 6  | Operating Costs.....  | 15 |
| 7  | Revenues.....   | 16 |
| 8  | Priorities for Future Expenditures.....                           | 16 |
| 9  | Analysis of Recreation Fee Rates .....                            | 17 |
| 10 | Impacts from Changing and Non-Changing Recreation Fee Rates ..... | 18 |
|    | i. Impacts of Adopting Proposed Fees .....                        | 19 |
|    | ii. Impacts of Not Adopting Proposed Fees .....                   | 19 |
|    | iii. Fee Discounts.....   | 20 |
| 11 | Public Outreach.....  | 20 |
|    | i. Feedback Mechanisms .....                                      | 20 |

## Tables

|   |    |
|---|----|
| Table 1: Estimated Number of Visitors to Shoshone Field Office, Fiscal Years 2019-2023 .....                                      | 9  |
| Table 2: Expanded amenity fee sites for developed campgrounds must provide at least the majority of the identified amenities..... | 9  |
| Table 3: 2023 estimated recreation fee site expenditures.....   | 16 |
| Table 4: Estimated revenues from fee sites.....   | 16 |
| Table 5: Campground amenity and fee comparisons .....   | 17 |
| Table 6: Boat ramp amenity and fee comparisons .....  | 17 |

## Figures

|   |    |
|---|----|
| Figure 1: Silver Creek North Campsite .....             | 9  |
| Figure 2: Silver Creek South Campsite .....             | 10 |
| Figure 3: Silver Creek Campground Location Map.....     | 10 |
| Figure 4: Wilson Lake Campground .....                  | 11 |
| Figure 5: Wilson Lake Campground Location Map .....     | 11 |
| Figure 6: Magic Reservoir Location Map .....            | 12 |
| Figure 7: Lava Creek Campground Conceptual Design ..... | 12 |

Figure 8: Lava Cove Campground Conceptual Design ..... 13  
Figure 9: Myrtle Point Campground Conceptual Design ..... 13  
Figure 10: Richfield Diversion Campground & Boat Ramp Conceptual Design ..... 14  
Figure 11: Moonstone Campground & Boat Ramp Conceptual Design ..... 14  
Figure 12: West Magic Boat Ramp & Parking Conceptual Design ..... 15

# 1 Executive Summary

The Bureau of Land Management (BLM) Shoshone Field Office (SFO) prepared this recreation fee business plan pursuant to the Federal Lands Recreation Enhancement Act (FLREA) of December 2004 (P.L. 108-477, as amended) and BLM recreation permit and fee program policy. FLREA provides the BLM the authority to charge and collect recreation fees for benefits and services provided to visitors. FLREA also authorizes the BLM to retain collected fees locally, outlines how revenues may be used, and identifies specific limitations on recreation fees. Collected revenue may be expended for benefits and services such as facility repair, maintenance, enhancement, interpretation, visitor information and services, visitor needs assessments, signs, restoration, law enforcement related to public use and recreation, and operating or capital costs directly associated with the recreation fee program.

BLM Manual 2930 requires field offices to produce a business plan when establishing new fee areas and sites and developing or changing recreation fees. The business plan outlines the fee program for the identified location and thoroughly discusses and explains how fees are consistent with the criteria set forth in FLREA. Business plans assist offices in determining appropriate fee rates, outlining the costs of administering fee programs, and identifying priorities for future fee program expenditures. The plan also serves as the outreach document to provide the public with opportunities to participate in the development of or modification of recreation fees.

The SFO manages two campgrounds and two boat ramps that meet the fee collection criteria established by FLREA. This business plan describes the recreation fee sites, planned fee revenue expenditures, a financial analysis of fee charges for other similar recreation facilities, and impacts of proposed fee changes.

After careful consideration of the anticipated revenues and expenditures, and comparison with other regional recreation providers, the SFO proposes the following fees:

- Establish an expanded amenity fee of \$20/night at the Silver Creek and Wilson Lake Campgrounds and future developed campgrounds at Magic Reservoir.
- Establish an expanded amenity fee of \$10/day or \$75 annual pass for Moonstone or West Magic Reservoir boat launches.

The proposed fees are necessary to meet the growing expenses of the recreation fee sites program especially the rising cost of annual maintenance and the associated increase in public use. Developed campgrounds and boat ramps are management tools used to prevent further resource damage and to provide better visitor services. Recreation fees are also considered a way to ensure that those who actively use developed recreation opportunities make a reasonable contribution towards protecting and enhancing those opportunities.

## 2 Background and Authorities

This business plan has been prepared to meet the criteria defined in the Federal Lands Recreation Enhancement Act of 2004 (Public Law 108-447; Title VIII, Section 801; 16 U.S.C. 6801–6814). The authorities and regulations for this business plan are:

- **The Federal Land Policy and Management Act (FLPMA) of 1976** (Public Law 94-579; 43 U.S.C. 1701–1787), contains BLM’s general land use management authority over the public lands, and establishes outdoor recreation as one of the principal uses of those lands. Section 302 (b) of FLPMA directs the Secretary of the Interior to regulate through permits or other instruments the use of the public lands. Section 303 of FLPMA contains BLM’s authority to enforce the regulations and impose penalties.
- **The Federal Lands Recreation Enhancement Act (FLREA) of 2004** repealed applicable portions of the Land and Water Conservation Fund Act and replaced BLM’s authority to collect recreation fees. This current law authorizes BLM to collect recreation fees at sites that meet certain requirements, allows BLM to keep the fee revenues at the local offices where they were collected, and directs how BLM will manage and utilize these revenues. FLREA also established the America the Beautiful – The National Parks and Federal Recreational Pass Program.
- **Title 43 Code of Federal Regulations, Part 2930 (43 CFR 2930) Permits for Recreation on Public Lands** contains the regulations governing BLM’s recreation permitting program.

This business plan has also been prepared pursuant to all applicable BLM recreation fee program policies and guidance, including:

- BLM Manual 2930, Recreation Permits and Fees, Rel. 2-296 dated October 22, 2007
- BLM Handbook 2930-1, Recreation Permit and Fee Administration Handbook, Rel. 2-300 dated November 17, 2014

Definitions of Standard and Expanded Amenities taken from FLREA and the BLM recreation fee program policy and manual for the area covered under this business plan:

- **Expanded Amenity Recreation Fees** cover specialized outdoor recreation sites and services including but not limited to developed campgrounds with at least a majority of the following amenities: (1) tent or trailer spaces, (2) picnic tables, (3) drinking water, (4) access roads, (5) fee collection by an employee or agent of the BLM, (6) reasonable visitor protection, (7) refuse containers, (8) toilet facilities, (9) simple devices for containing a campfire (Sec. 803.(g)(2)(A) of REA).
- **Additional Expanded Amenity** recreation facilities or services include rental of cabins, group day-use or overnight sites, binoculars or other equipment (Sec.803.(g)(2)(C) of REA); use of hookups for electricity, cable, or sewer (Sec.803.(g)(2)(D) of REA); use of sanitary dump stations (SEC.803.(g)(2)(E) of REA); and use of reservation services (Sec.803.(g)(2)(G) of REA).
- **Use of highly developed boat launches** with specialized facilities or services such as mechanical or hydraulic boat lifts or facilities, multi-lane paved ramps, paved parking, restrooms and other improvements such as boarding floats, loading ramps, or fish cleaning stations.

The BLM strives to manage recreation and visitor services to serve the diverse visitor outdoor recreation demands while helping to maintain sustainable setting conditions needed to conserve the public lands, so the visitors’ desired recreation choices remain available. The BLM’s goals for providing recreation

opportunities on BLM-administered lands and waters to the American people and their communities are to:

- Improve access to appropriate recreation opportunities,
- Ensure a quality experience and enjoyment of natural and cultural resources, and
- Provide for and receive fair value in recreation.

This business plan will assist the SFO in meeting these recreation and visitor service goals. This plan covers both existing campgrounds and boat ramps operated by the field office and establishes a business plan framework if additional facilities are built and/or upgraded to the level outlined by FLREA. Additional recreation sites were analyzed and included in the Programmatic Shoshone Field Office Recreation Site Upgrades Environmental Assessment and Decision Record. This business plan would be updated in the future if fees were to be considered at any new developed recreation site within the SFO.

### **3 Introduction to the Field Office Recreation Program**

The SFO offers stunning scenery, peaceful solitude and outstanding opportunities for year-round recreation including hiking, camping, hunting, fishing, alpine and Nordic skiing, snowmobiling, motorized and non-motorized trails, and scenic viewing.

The Shoshone Field Office is in south-central Idaho and manages approximately 1.7 million acres of public lands within Blaine, Lincoln, Gooding, Jerome, Minidoka, Camas, Elmore, Power and Butte Counties. It is home to the largest known density of caves within BLM and manages nearly 40% of the Bald Mountain Ski Area in Sun Valley. In this region, the BLM co-manages the Craters of the Moon National Monument and Preserve (CRMO) with the National Park Service, which features some of the best examples of recent basaltic volcanic flows on the mainland. Another unique feature to the Shoshone Field Office is Black Magic Canyon, where the Big Wood River has carved a narrow path of exquisite, swirling rock sculptures into the surrounding black basalt. The four-mile section of complex carvings and potholes is one of the best and most beautiful examples of eroded river bedrock in the United States. Recreation opportunities attracted 1,260,500 visits (Recreation Management Information Systems) to the SFO and CRMO in 2023.

The SFO manages seven non-fee campgrounds. Silver Creek and Wilson Lake campgrounds are developed with sufficient amenities to allow the BLM to charge expanded amenity fees. The five others are considered semi-developed campgrounds at Magic Reservoir and, according to FLREA's requirements, do not currently have sufficient amenities to charge fees. These semi-developed campgrounds have been authorized through the National Environmental Policy Act (NEPA) and associated decision record to be upgraded and meet the FLREA requirements. These sites are Moonstone, Lava Creek, Lava Cove, Myrtle Point and Richfield Diversion. Once a semi-developed campground has been upgraded and meets FLREA's requirements of expanded amenities, fees could be charged at those sites as well. In addition to the campgrounds at Magic Reservoir there are two developed boat launches at Magic with sufficient amenities that qualify the BLM to charge expanded amenity fees. The boat launch amenities include paved ramps, parking, access to restrooms and other improvements such as boat docks, lifejacket loaner station, and kiosk. One additional boat launch at East Magic does not currently have sufficient amenities to charge fees.



Table 1: Estimated Number of Visitors to Shoshone Field Office, Fiscal Years 2019-2023

| Fiscal Year | Shoshone Field Office Estimated Number of Visitors (Use dramatically changes based on reservoir/water levels and snow conditions on Bald Mountain.) |
|-------------|---|
| FY2019      | 810,976   |
| FY2020      | 837,335   |
| FY2021      | 792,933   |
| FY2022      | 906,968   |
| FY2023      | 1,260,584   |

## 4 Description of Each Existing or Proposed Fee Site/Area

The table below lists the campgrounds and the types of amenities offered or proposed to be offered prior to implementing an expanded amenity fee.

| Camp-ground         | Tent/trailer space | Picnic tables | Drinking Water | Access roads | Fee Collection | Visitor protection | Refuse containers | Toilet | Fire ring |
|---------------------|--------------------|---------------|----------------|--------------|----------------|--------------------|-------------------|--------|-----------|
| Silver Creek        | Yes                | Yes           | No             | Yes          | Proposed       | Yes                | No                | Yes    | Yes       |
| Wilson Lake         | Yes                | Yes           | No             | Yes          | Proposed       | Yes                | No                | Yes    | Yes       |
| Lava Creek          | Proposed           | Proposed      | No             | Yes          | Proposed       | Yes                | No                | Yes    | Proposed  |
| Lava Cove           | Proposed           | Proposed      | No             | Yes          | Proposed       | Yes                | No                | Yes    | Proposed  |
| Myrtle Point        | Proposed           | Proposed      | No             | Yes          | Proposed       | Yes                | No                | Yes    | Proposed  |
| Richfield Diversion | Proposed           | Proposed      | No             | Yes          | Proposed       | Yes                | No                | Yes    | Proposed  |
| Moonstone           | Proposed           | Proposed      | No             | Yes          | Proposed       | Yes                | No                | Yes    | Proposed  |

Table 2: Expanded amenity fee sites for developed campgrounds must provide at least the majority of the identified amenities.



Figure 1: Silver Creek North Campsite

### Silver Creek Campground

Silver Creek Campground is a proposed expanded amenity fee site. It is a three-site campground located 9 miles southwest of Carey, Idaho. . It meets the FLREA expanded amenity requirements, see Table 2. It meets the FLREA expanded amenity requirements, see Table 2. The sites see consistent use spring – fall. Silver Creek North was upgraded in 2019 and Silver Creek South was upgraded in

2017. The Silver Creek campground is immediately downstream of the world-class trout stream fishery that flows through the Nature Conservancy’s Silver Creek Preserve.



Figure 2: Silver Creek South Campsite

## Silver Creek Campground

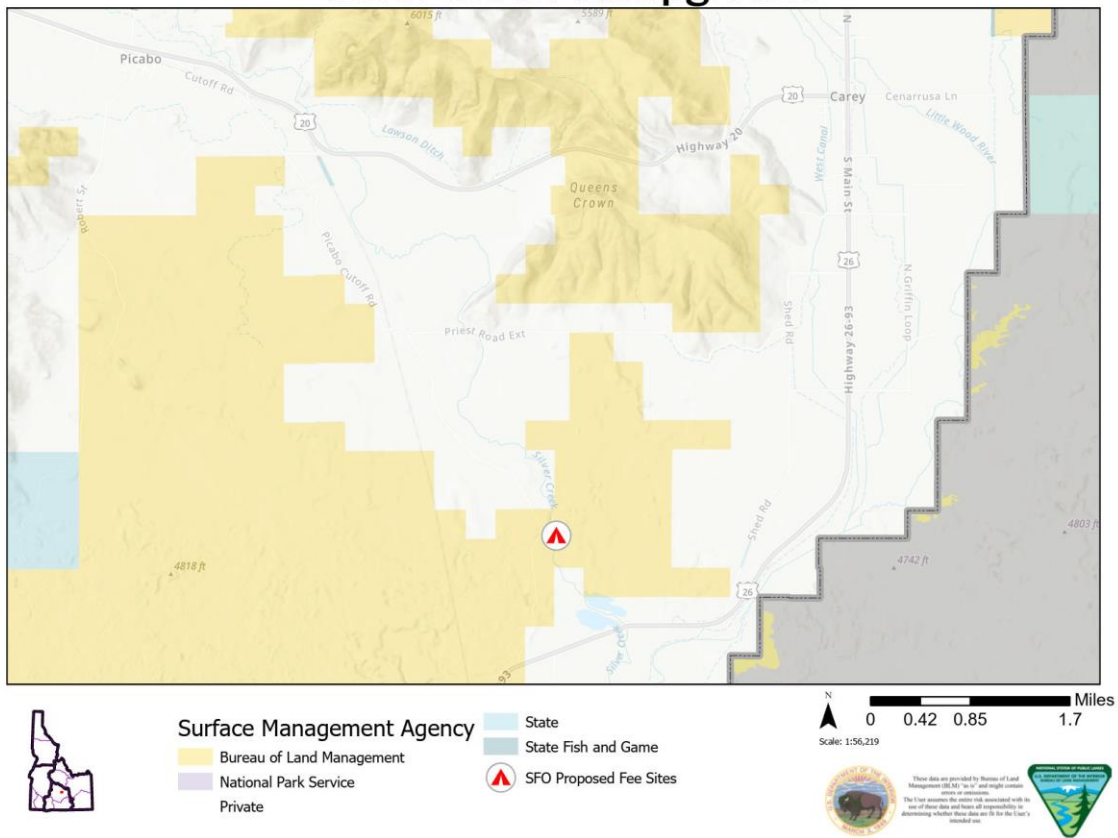


Figure 3: Silver Creek Campground Location Map



Figure 4: Wilson Lake Campground

### Wilson Lake Campground

Wilson Lake Campground is a proposed fee site. It is an eight-site campground located 1.5 miles north of Hazelton, Idaho. It meets the FLREA expanded amenity requirements, see Table 2. The sites will see consistent use spring – fall. The campground was constructed in 2023. Wilson Lake provides opportunities for motorized and non-motorized water-based recreation as well as wildlife watching and birding.

## Wilson Lake Campground

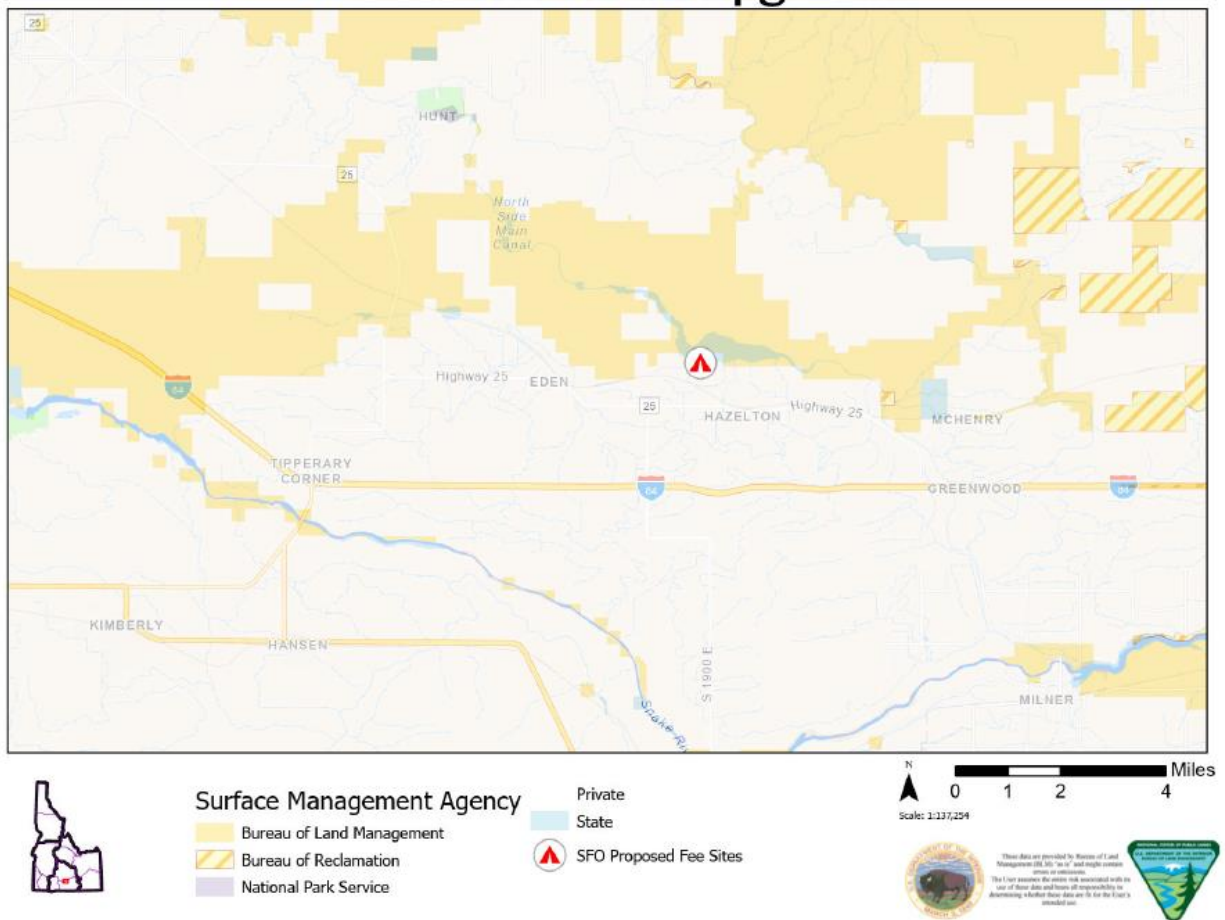


Figure 5: Wilson Lake Campground Location Map

**Magic Reservoir Campgrounds and Boat Ramps**

**Magic Reservoir Campgrounds & Boat Ramps**

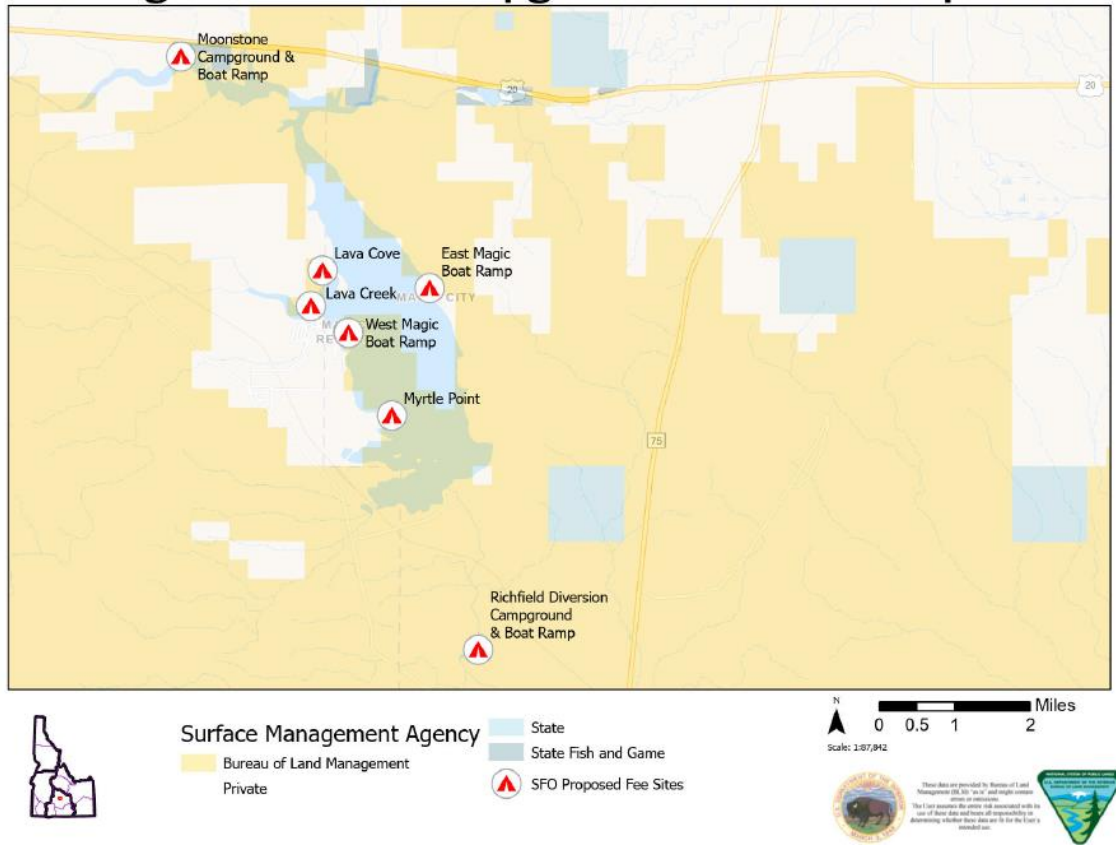


Figure 6: Magic Reservoir Location Map

**Lava Creek Campground**

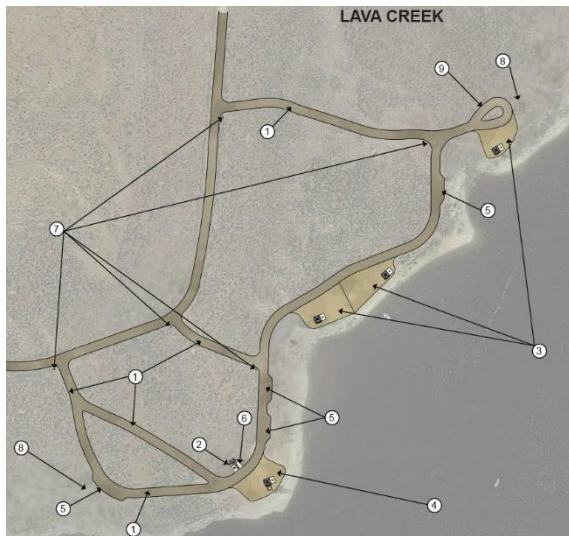


Figure 7: Lava Creek Campground Conceptual Design

Lava Creek Campground is located approximately 30 miles north of Shoshone, Idaho. It currently does not meet the FLREA expanded amenity requirements, see Table 2. However, prior to implementing an expanded amenity fee the campground will be upgraded to meet FLREA requirements. The sites will see consistent use spring – fall. The campground is expected to be upgraded within the next 3-5 years.

### Lava Cove Campground

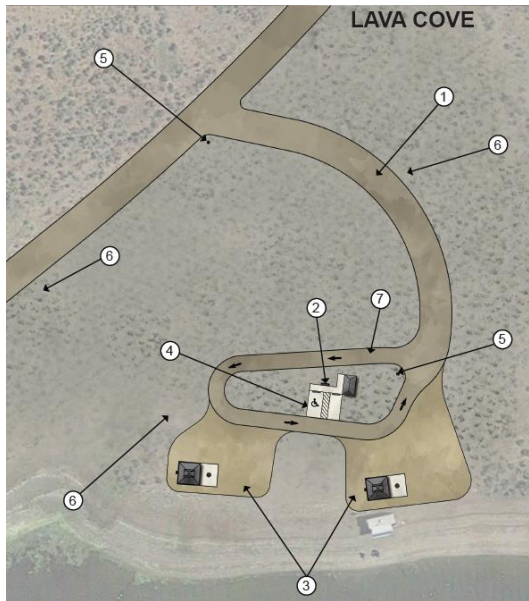


Figure 8: Lava Cove Campground Conceptual Design

Lava Cove Campground is located approximately 30 miles north of Shoshone, Idaho. It currently does not meet the FLREA expanded amenity requirements, see Table 2. However, prior to implementing an expanded amenity fee the campground will be upgraded to meet FLREA requirements. The sites will see consistent use spring – fall. The campground is expected to be upgraded in 3 – 5 years.

### Myrtle Point Campground

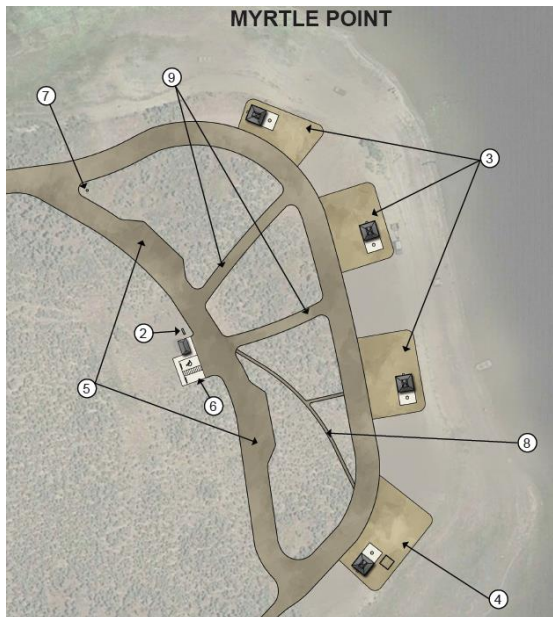


Figure 9: Myrtle Point Campground Conceptual Design

Myrtle Point Campground is located approximately 30 miles north of Shoshone, Idaho. It currently does not meet the FLREA expanded amenity requirements, see Table 2. However, prior to implementing an expanded amenity fee the campground will be upgraded to meet FLREA requirements. The sites will see consistent use spring – fall. The campground is expected to be upgraded within the next 3-5 years.

### Richfield Diversion Campground and Boat Ramp

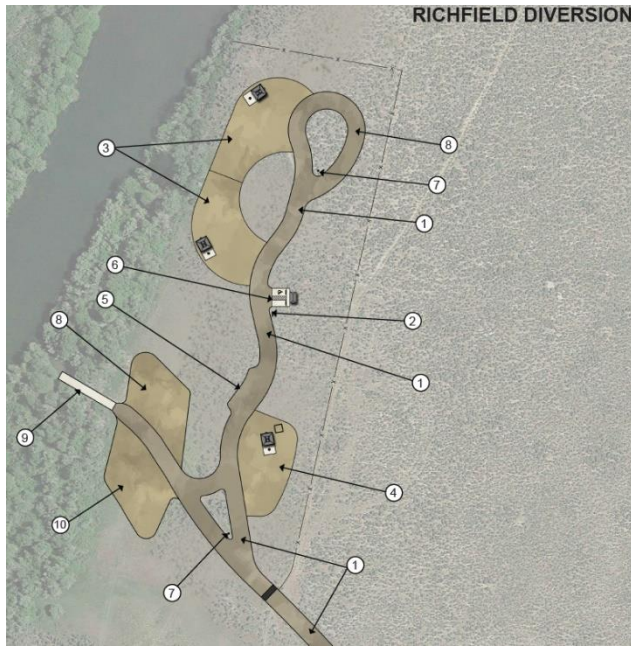


Figure 10: Richfield Diversion Campground & Boat Ramp Conceptual Design

Richfield Diversion Campground is located approximately 30 miles north of Shoshone, Idaho. It currently does not meet the FLREA expanded amenity requirements, see Table 2. However, prior to implementing an expanded amenity fee the campground will be upgraded to meet FLREA requirements. The sites will see consistent use spring – fall. The campground is expected to be upgraded in the next 3-5 years. The boat ramp does not meet the FLREA expanded amenity fee requirements and there are no plans to upgrade it to meet them therefore, no fees are being proposed to use this facility.

### Moonstone Campground and Boat Ramp

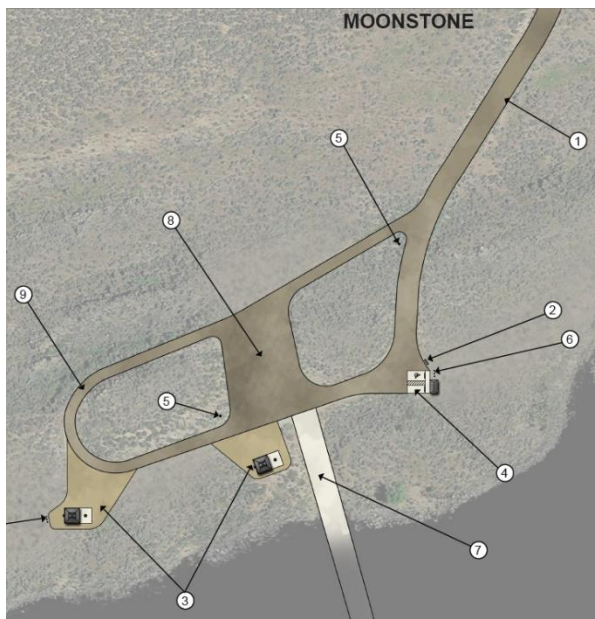


Figure 11: Moonstone Campground & Boat Ramp Conceptual Design

Moonstone Campground is located approximately 18 miles southwest of Bellevue, Idaho. It currently does not meet the FLREA expanded amenity requirements, see Table 2. However, prior to implementing an expanded amenity fee the campground will be upgraded to meet FLREA requirements. The sites will see consistent use spring – fall. The campground is expected to be upgraded in the next 3-5 years.

Moonstone boat ramp meets the FLREA expanded amenity fee requirements. It is a concrete ramp accessed by gravel road, access to a toilet gravel parking, and visitor protection. These amenities are all in good to fair condition.

## West Magic Boat Ramp

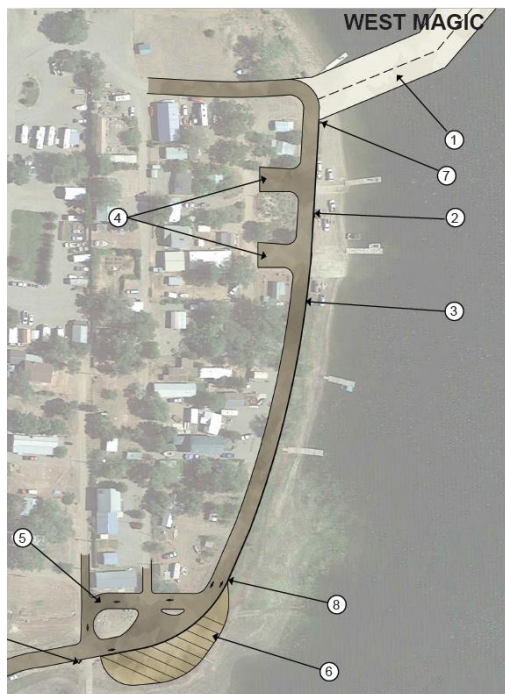


Figure 12: West Magic Boat Ramp & Parking Conceptual Design

West Magic boat ramp is located approximately 30 miles north of Shoshone, Idaho and is a very busy boat ramp when the reservoir is full or partially full. It meets the FLREA expanded amenity fee requirements. It is a concrete ramp is accessed by gravel road, gravel parking, visitor protection, kiosk, and a life-jacket loaner station. These amenities are all in fair condition.

## 5 Proposed Recreation Expanded Amenity Fee Rates

These sites will be managed on a first-come, first-served basis. The SFO will use various e-commerce technologies as directed in BLM Instruction Memorandum 2022-010, to provide recreation visitors opportunities to find, reserve and pay for campsites and day use within the field office. Most of these options are provided through the interagency reservation service Recreation.gov. If the SFO decides to add reservation services or other types of e-commerce options available in the future, an expanded amenity fee for reservation services would be charged in addition to any other standard or expanded amenity fees in accordance with 16 U.S.C. 6802(g)(2)(G).

If the SFO decides to add reservation services, then reservation service fees are charged and could range from \$0.50 to \$10.00 depending on the type of service provided. The reservation service fee is subject to contracting requirements and will be adjusted with contract changes or with future updates to the business plan. The field office would provide a blend of reservation and first-come, first served options at each of the campgrounds and day use areas. This accommodates visitors who do not desire to pay the expanded amenity fee for reservation services. Other payment options may also be considered in the future as technology and software develops.

## 6 Operating Costs

The SFO expends considerable resources in managing the recreation sites. Direct costs for recreation management include BLM labor, toilet cleaning and pumping, vehicles and vehicle maintenance, law enforcement, maintaining signage, maintenance materials and supplies. The SFO spends approximately \$59,340 each year to operate and maintain these recreation sites. The table below is a breakdown of approximate costs associated with managing these sites. These expenditures represent a typical year, although some years may be higher due to unforeseen circumstances.

Table 3: 2023 estimated recreation fee site expenditures.

| <b>Expenditure</b>             | <b>Amount</b>   |
|--------------------------------|-----------------|
| Labor – Park Ranger (6 months) | \$25,000        |
| Toilet pumping                 | \$2,000         |
| Maintenance Supplies           | \$2,000         |
| Vehicles/Fuel                  | \$3,000         |
| Road grading                   | \$2,340         |
| <b>Total Expenditure</b>       | <b>\$34,340</b> |

## 7 Revenues

Visitors camping overnight at the fee campgrounds within the SFO will be required to obtain a recreational use permit (RUP). This will be accomplished using the Scan & Pay feature on Recreation.gov to obtain a RUP for any of the SFO fee campgrounds or boat launches. Estimated revenue for these sites are based on 50% occupancy (campgrounds) and use (boat ramps) from May 15 – October 1<sup>st</sup> (135 days).

Table 4: Estimated revenues from fee sites.

| <b>Campground</b>  | <b>Amount</b>   |
|--|-----------------|
| Wilson Lake (4 sites @ \$20/night)                               | \$10,800        |
| Silver Creek (1.5 sites @ \$20/night)                            | \$4,050         |
| Magic Reservoir sites (7.5 sites@ \$20/night)                    | \$20,250        |
| Magic Reservoir boat ramps combined (10 launches/day@ \$10/boat) | \$6,750         |
| <b>Total estimated revenue</b>                                   | <b>\$41,850</b> |

To keep up with rising management and maintenance costs, the SFO will lean on the average annual Western U.S. Consumer Price Index (CPI) to make future fee adjustments, starting the year after fees are initially charged. When the increase or decrease in the CPI reaches a \$2 increment the fees would be adjusted accordingly. For example, with a \$20 fee for individual campsites, a 10 percent increase in the Western U.S. CPI would lead to a \$2 increase in fees to \$22. Typically, the Western U.S. CPI increases approximately 3 percent a year. Thus, it would likely take 4 years to increase the fees by \$2. The BLM would inform the BLM Idaho Resource Advisory Council (RAC) before each fee increase and provide an update on successes and challenges in using the Western U.S. CPI.

## 8 Priorities for Future Expenditures

Revenue would be used to support expenditures and any carryover would be used to supplement deferred maintenance projects such as road grading, toilet repairs, picnic table replacement, visitor information upgrades, etc.

The SFO’s primary goal for recreation fee sites is to provide high-quality recreation opportunities for all visitors. Recreation fee revenue will support operations of the sites. The following is an initial list of priority expenditures that recreation fee site revenue will continue to be used for:

- Supplies including but not limited to cleaning supplies, toilet paper, paint, etc.
- Maintain, improve, and replace recreation site infrastructure such as signage, fire rings, picnic tables, restroom buildings, information kiosks, etc.



- Government vehicles and trailers.
- Labor.
- Interpretive materials.
- Construction of additional recreational facilities.

## 9 Analysis of Recreation Fee Rates

The SFO determined the new proposed expanded amenity fees for new recreation fee sites by comparing the BLM facilities to other facilities that offer similar recreation activities, access, services, and amenities in south-central Idaho. These include facilities managed by adjacent BLM field offices, United States Forest Service (USFS), National Park Service (NPS), and Idaho Department of Parks and Recreation (IDPR).

Table 5: Campground amenity and fee comparisons

| Campground     | Agency | Location                          | Amenities   | Fee/Night |
|----------------|--------|-----------------------------------|---|-----------|
| Lava Flow      | NPS    | Craters of the Moon               | Water & flush toilets or vault toilet, picnic table, charcoal grill, trash collection.  | \$15      |
| Easley         | USFS   | 14 miles North of Ketchum, ID.    | River access, vault toilet, water, fire pit, picnic table, gravel road and parking areas.   | \$18      |
| North Fork     | USFS   | 10 miles North of Ketchum, ID.    | River access, vault toilet, water, fire pit, picnic table, gravel road and parking areas.   | \$20      |
| Milner         | BLM    | 12 miles West of Burley, ID.      | River access, fire rings, picnic tables, paved and maintained road access, vault toilets, trash disposal, shade cabanas, boat ramp. | \$15      |
| Lake Walcot    | IDPR   | 20 miles Northeast of Burley, ID. | River access, boat ramp, restrooms, picnic tables, fire rings, paved access, dump station, disc golf, visitor center                | \$14      |
| Massacre Rocks | IDPR   | 45 miles East of Burley, ID.      | River access, boat ramp, restrooms, picnic tables, fire rings, paved access, dump station, disc golf, visitor center                | \$21      |

Table 6: Boat ramp amenity and fee comparisons

| Boat Ramp                  | Agency | Location                        | Amenities  | Fee                          |
|----------------------------|--------|---------------------------------|--|------------------------------|
| Smokey Bear (Alturas Lake) | USFS   | 25 miles South of Stanley, ID.  | Concrete boat ramp and boat trailer parking area, vault toilet     | \$10/day or \$75 annual pass |
| Anderson Ranch Reservoir   | USFS   | 40 miles East of Fairfield, ID. | Concrete boat ramps with dirt parking area and vault toilet nearby | \$5/day                      |

|             |     |                                       |   |  |
|-------------|-----|---------------------------------------|---|--|
| Milner      | BLM | 12 miles West of Burley, ID.          | Concrete boat ramp, gravel parking area, vault toilet, picnic area, hiking trail. | \$5/day or \$50 Milner/Lud Drexler annual pass |
| Lud Drexler | BLM | 36 miles Southwest of Twin Falls, ID. | Concrete boat ramp, gravel parking area, vault toilet.                            | \$5/day or \$50 Milner/Lud Drexler annual pass |

The comparison camping rates listed above are for basic (non-electric) campsites with access to picnic tables, barbecue grates, and vault restrooms. These campgrounds were chosen for comparison because they are the geographically closest public campgrounds with similar amenities to the BLM SFO campgrounds. Private campgrounds were not analyzed because the rates they charge are usually higher based on access to more amenities. Based on the above comparisons, the BLM SFO campgrounds and boat ramp proposed rates are comparable and reasonable.

## 10 Impacts from Changing and Non-Changing Recreation Fee Rates

Consistent with the Department of the Interior and BLM priorities, the BLM Shoshone Field Office seeks to achieve environmental justice, equity, diversity, inclusion, and accessibility and make a difference in surrounding communities through expanding recreational access and opportunities and providing for natural resource interpretation. This will:

- encourage, facilitate, and improve partnership with and access for youth, tribes, and underserved communities to public lands through recreation partnerships and collaborations;
- improve public health and safety at developed recreation sites and areas by updating and modernizing infrastructure—including meeting accessibility standards for people with disabilities;
- invite education, interpretation, and recreational access for all Americans, especially for diverse populations and those near urban areas to encourage enjoyment of BLM-managed public lands and waters;
- collaborate with community members, government organizations, nonprofit organizations, academic institutions, and other stakeholders to address environmental and health-related challenges for recreation management;
- enhance understanding of environmental and health-related issues at the community level;
- improve methods for identifying, addressing, tracking, and measuring progress toward achieving environmental justice;
- develop and support youth education and outreach programs.

The goal of the SFO Recreation Sites fee proposal is to financially support maintaining the developed recreation facilities. The purpose of the BLM recreation fee program is not to maximize revenue but to help protect natural resources, provide for public health and safety, and facilitate access to public lands and waters. BLM Manual 2930 – Recreation Permits and Fees outline that fees should be balanced and affordable for all members of the public, rather than an impediment. Recreation fees are also generally considered a way to ensure that those who actively use developed recreation sites make a reasonable

contribution towards protecting and enhancing those opportunities. The proposed and projected revenue is similar to the anticipated annual operating costs associated with the recreation sites. If implemented the fee proposal would then meet the desired goal.

#### i. Impacts of Adopting Proposed Fees

High quality recreation opportunities are valued locally, statewide, and nationally by the public. The SFO expects the demand for camping, launching boats and the associated recreation activities on public lands to continue increasing. As visitation increases, so does the maintenance and operating costs associated with the facilities in this business plan. Implementing the fee proposal would improve the quality of the visitor experience by supporting more campground and boat ramp amenities, increasing recreation staff presence, and improving overall visitor experiences and satisfaction.

Implementing the proposed fees would give the SFO more flexibility in relation to funding for maintenance and operating costs associated with fee sites and avoid sole dependence on appropriated funding. If the proposed fee increases were adopted, current services would continue. New projects identified in the Expenditures and Planned Future Projects section could be implemented as needed. Site infrastructure, cleanliness, and visitor services and information would also benefit. All these combined would improve the overall visitor experience.

It is imperative to the local economy to keep recreation site infrastructure in good condition, clean, and serviced to high standards. Maintaining these high standards and creating new opportunities improve the overall recreational experience for current and future visitors.

#### ii. Impacts of Not Adopting Proposed Fees

New and existing facilities represent a substantial public investment. Without fees visitors could expect to see a loss of functionality and use of these facilities as maintenance capacity will be reduced due to insufficient funding or staffing. As costs are anticipated to increase, maintenance might not happen as quickly or as often as needed, and some services might be reduced.

If fees are not charged the costs to operate and maintain the proposed fee sites would continue to rely on fluctuating appropriated funding and therefore might face challenges implementing the BLM's recreation strategy. As mentioned earlier, not implementing the proposed fees could lead to limited cleaning and maintenance services at the sites. If sites are not appealing to visitors, they might stop recreating in this region, thereby affecting the local economy.

This fee proposal may have a negative impact on low-income or minority populations. There are numerous free dispersed camping opportunities throughout the SFO as well as adjacent State and federal lands. There are also opportunities for discounted camping fees for the campgrounds included in this business plan, see details below. With the opportunities for free or discounted fees, implementing the fee proposal is expected to have no significant impact to low-income or minority populations considering the availability of non-fee campgrounds and fee discounts. Fees will not be charged for any Tribal Member who has a right of access for hunting or fishing privileges under a specific provision of law or treaty, or for any person who is engaged in the conduct of official Federal, State, Tribal, or local government business.

### iii. Fee Discounts

Section 5 of FLREA provided for the establishment of a single interagency national pass known as the America the Beautiful Pass—the National Parks and Federal Recreational Lands Pass. This pass as well as Every Kid Outdoors pass do not apply to expanded amenity fee sites such as campgrounds.

Holders of the Interagency Senior and Access passes may receive half-off of expanded amenity fees at individual sites only. This includes overnight camping at all SFO campgrounds. No other fee discounts, passes or waivers are allowed.

The BLM offers Fee-Free Days at standard amenity sites and day-use fee sites. This offer will be honored at the Magic Boat ramps.

## 11 Public Outreach

The BLM’s “Blueprint for 21<sup>st</sup> Century Outdoor Recreation” provides a vision to proactively manage for exceptional and one-of-a kind recreational experiences that invite all to share in the enjoyment and stewardship of their public lands and waters. As part of this blueprint the SFO seeks engagement and partnerships with local stakeholders to accomplish mutual public access and recreation objectives.

Public Communication and Marketing Plan:

- Public notice of the proposed fee system, including fee details and calling for public comments, will be posted at the recreation sites included in this business plan and at the SFO.
- News release detailing the fee proposal and calling for public comments will be issued to all local newspapers and posted on BLM social media.
- The business plan will be published on the BLM website with links to submit comments. <https://www.blm.gov/programs/recreation/permits-and-fees/business-plans>
- A Notice of new Recreation Fee Collection, along with a call for public comments, will be published in the Federal Register.

The SFO will present the Shoshone Field Office Recreation Fee Sites fee proposal to the BLM Idaho Resource Advisory Council (RAC) for advice, feedback and, recommendations in October 2024. FLREA mandates that the appropriate RAC be consulted and given the opportunity to provide recommendations to BLM for all recreation fee proposals prior to implementation. Comments received from the public and BLM Idaho RAC will be considered prior to implementation of the fee proposal.

### i. Feedback Mechanisms

The BLM will provide a 30-day minimum public review period during which the public will have the opportunity to learn about the proposal and to submit comments for consideration.

The public may submit comments on the proposed recreation use fee changes utilizing the following methods:

- Email to: [BLM\\_ID\\_ShoshoneOffice@blm.gov](mailto:BLM_ID_ShoshoneOffice@blm.gov)
- U.S. Postal Mail to: BLM Shoshone Field Office, 400 West F Street, Shoshone, ID, 83352.