



**DEPARTMENT OF THE INTERIOR**  
**Bureau of Land Management**

**Notice of Temporary Closure for Wildfire Suppression Efforts on BLM-managed Public Lands in Lemhi County, ID**

**AGENCY:** Bureau of Land Management (BLM), Interior.

**ACTION:** Notice of Temporary Closure for Wildfire Suppression Efforts

**SUMMARY:** Notice is hereby given that BLM-managed public lands south of the Williams Creek Road, and west and north of the Williams Lake Road in Lemhi County, Idaho administered by the BLM Salmon Field Office will be temporarily closed to all entry by members of the public. In addition, BLM-managed public lands north and west of Lakeview Drive will be temporarily closed, including the Williams Lake Campground.

**DATES:** This partial closure will be effective at noon on Friday, July 26, 2024.

**FOR FURTHER INFORMATION CONTACT:** Linda Price, Salmon Field Manager, (208) 756-5410. Persons who use a telecommunications device for the deaf (TDD) may call the Federal Information Relay Service (FIRS) at 1-800-877-8339 to contact the above individual during normal business hours. The FIRS is available 24 hours a day, 7 days a week, to leave a message or question with the above individual. You will receive a reply during normal hours.

**SUPPLEMENTARY INFORMATION:** The legal description of this temporary closure affects BLM-managed public lands in T20N R21E. This temporary closure is necessary to provide protection to visitors given the fire behavior of the Thunder Fire.

This closure will be posted at the Salmon Field Office and closure signs will be posted at the Henry Creek and Dry Gulch access points, as well as at the junction of the Williams Creek and Williams Lake Roads and the junction of the Williams Lake Road and Lakeview Drive.

**EXEMPTION:** The following persons are exempt from this order: Federal, state, and local officers and employees in the performance of their official duties; members of organized rescue or fire-fighting forces in the performance of their official duties; and persons with written authorization from the BLM.

Linda R. Price  
Field Manager  
Salmon Field Office

**AUTHORITY:** 43 CFR Section 9212.2



# Temporary Public Closure

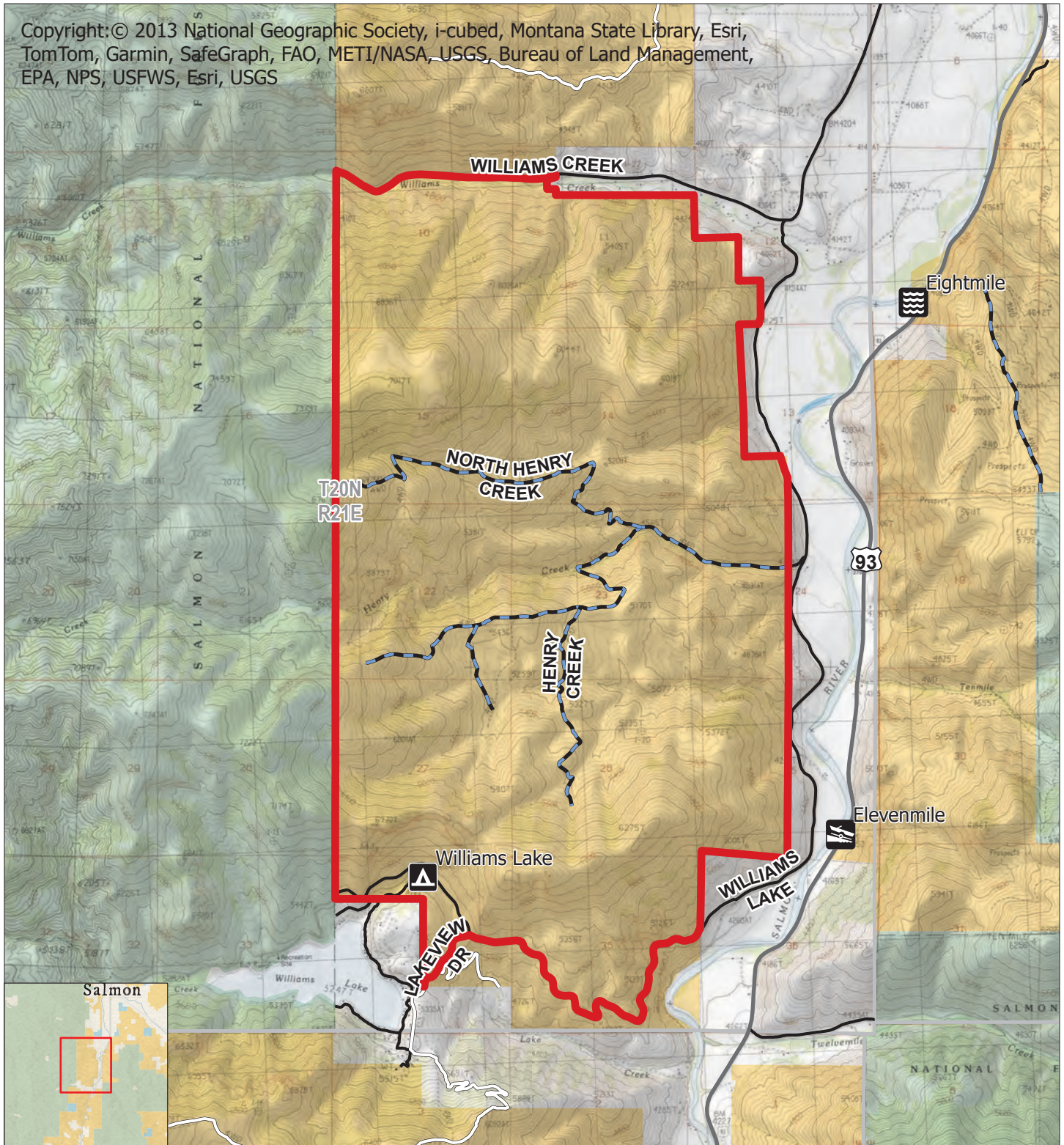
For Thunder Wildfire Suppression Efforts

Bureau of Land Management  
Salmon Field Office  
1206 South Challis Street  
Salmon, ID 83467  
208-756-5400



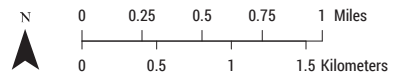
7/26/2024

Copyright: © 2013 National Geographic Society, i-cubed, Montana State Library, Esri, TomTom, Garmin, SafeGraph, FAO, METI/NASA, USGS, Bureau of Land Management, EPA, NPS, USFWS, Esri, USGS



- Closure Area
- PRIMITIVE ROAD
- BLM ROADS
- TRAIL
- ROAD
- Bureau of Land Management (BLM)

- USDA Forest Service
- State Land
- Private Land / Unknown Ownership



No warranty is made by the Bureau of Land Management as to the accuracy, reliability, or completeness of this map or the data displayed for individual use or aggregate use with other data.