



Temporary Public Closure

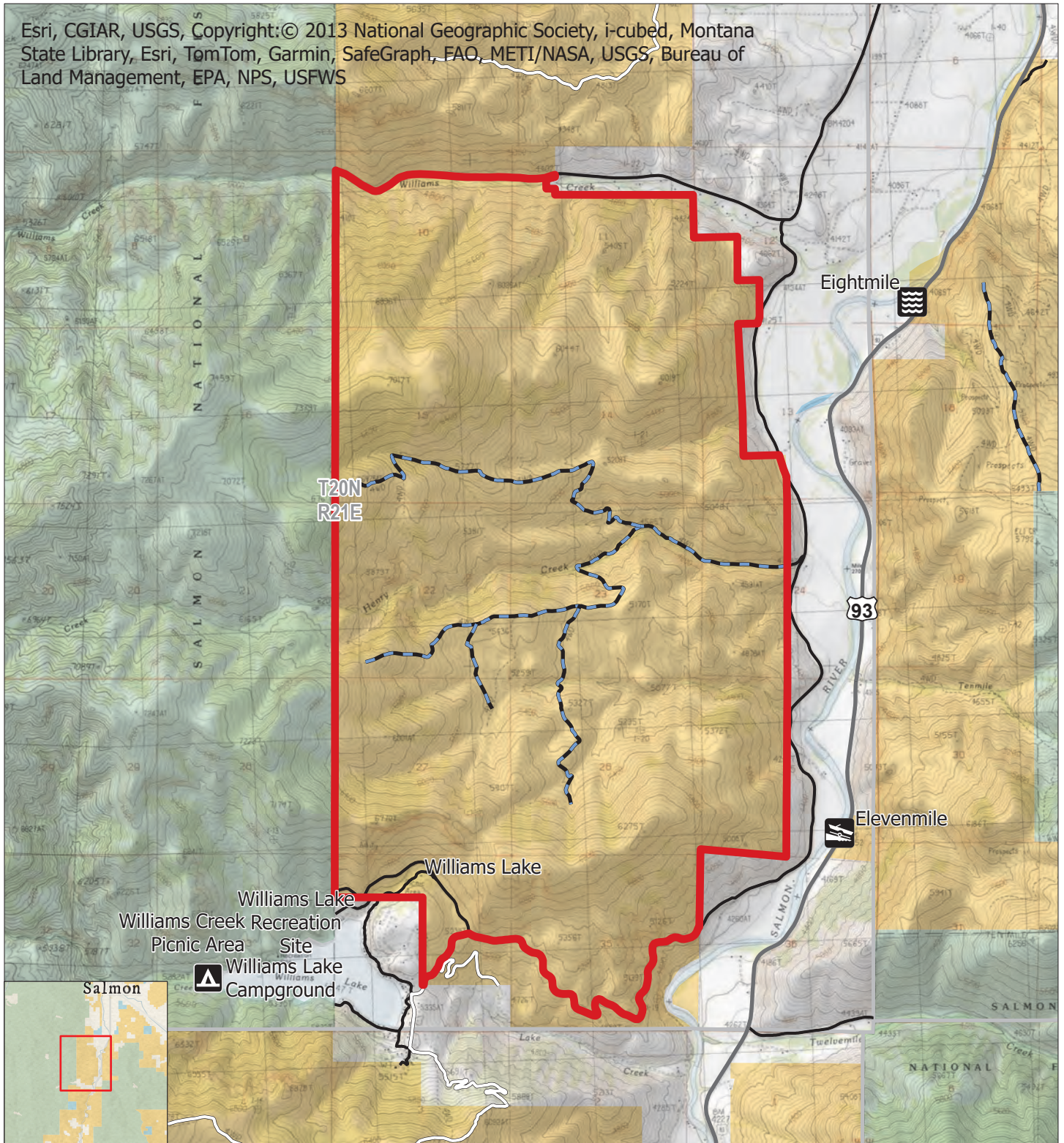
For Thunder Wildfire Suppression Efforts

Bureau of Land Management
Salmon Field Office
1206 South Challis Street
Salmon, ID 83467
208-756-5400

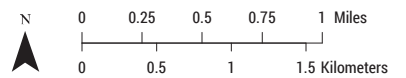


7/26/2024

Esri, CGIAR, USGS, Copyright:© 2013 National Geographic Society, i-cubed, Montana State Library, Esri, TomTom, Garmin, SafeGraph, FAO, METI/NASA, USGS, Bureau of Land Management, EPA, NPS, USFWS



- Closure Area
- PRIMITIVE ROAD
- USDA Forest Service
- State Land
- TRAIL
- Private Land / Unknown Ownership
- ROAD
- Bureau of Land Management (BLM)



No warranty is made by the Bureau of Land Management as to the accuracy, reliability, or completeness of this map or the data displayed for individual use or aggregate use with other data.