



Pinyon Jays and Pinyon-Juniper Woodlands

John D. Boone
&
Kelly Colegrove

Great Basin Bird
Observatory
Reno NV

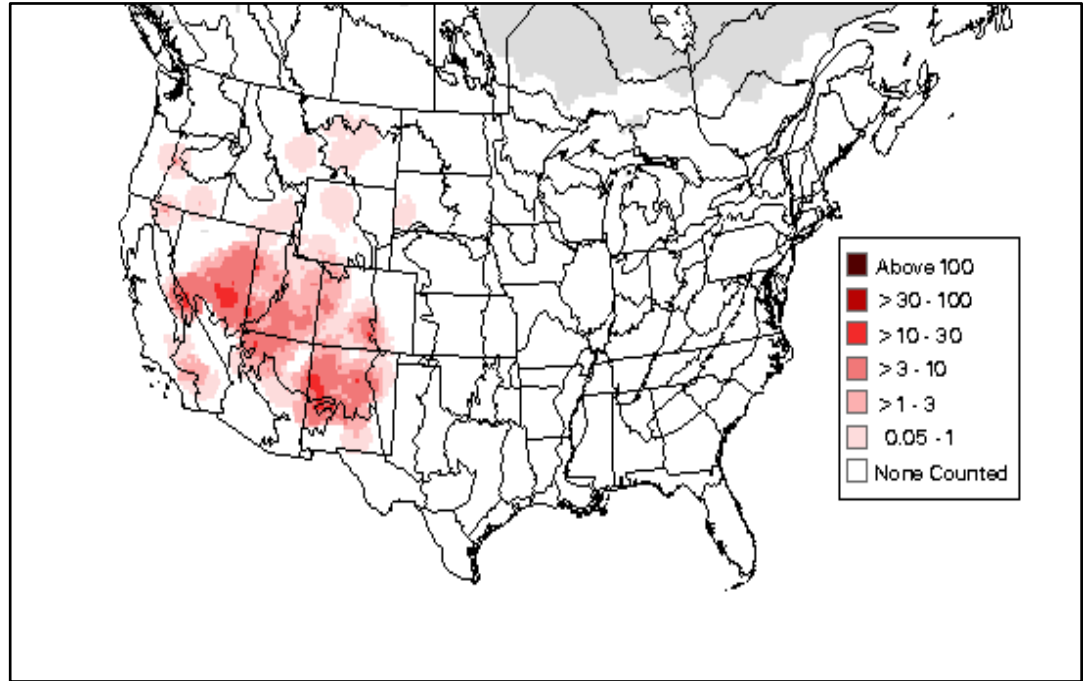
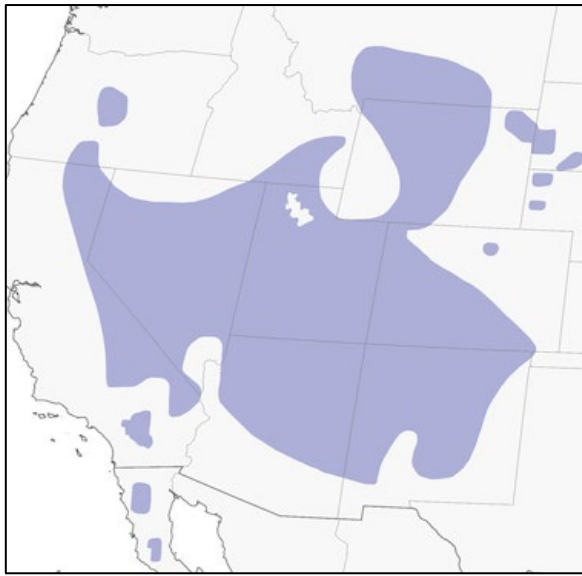


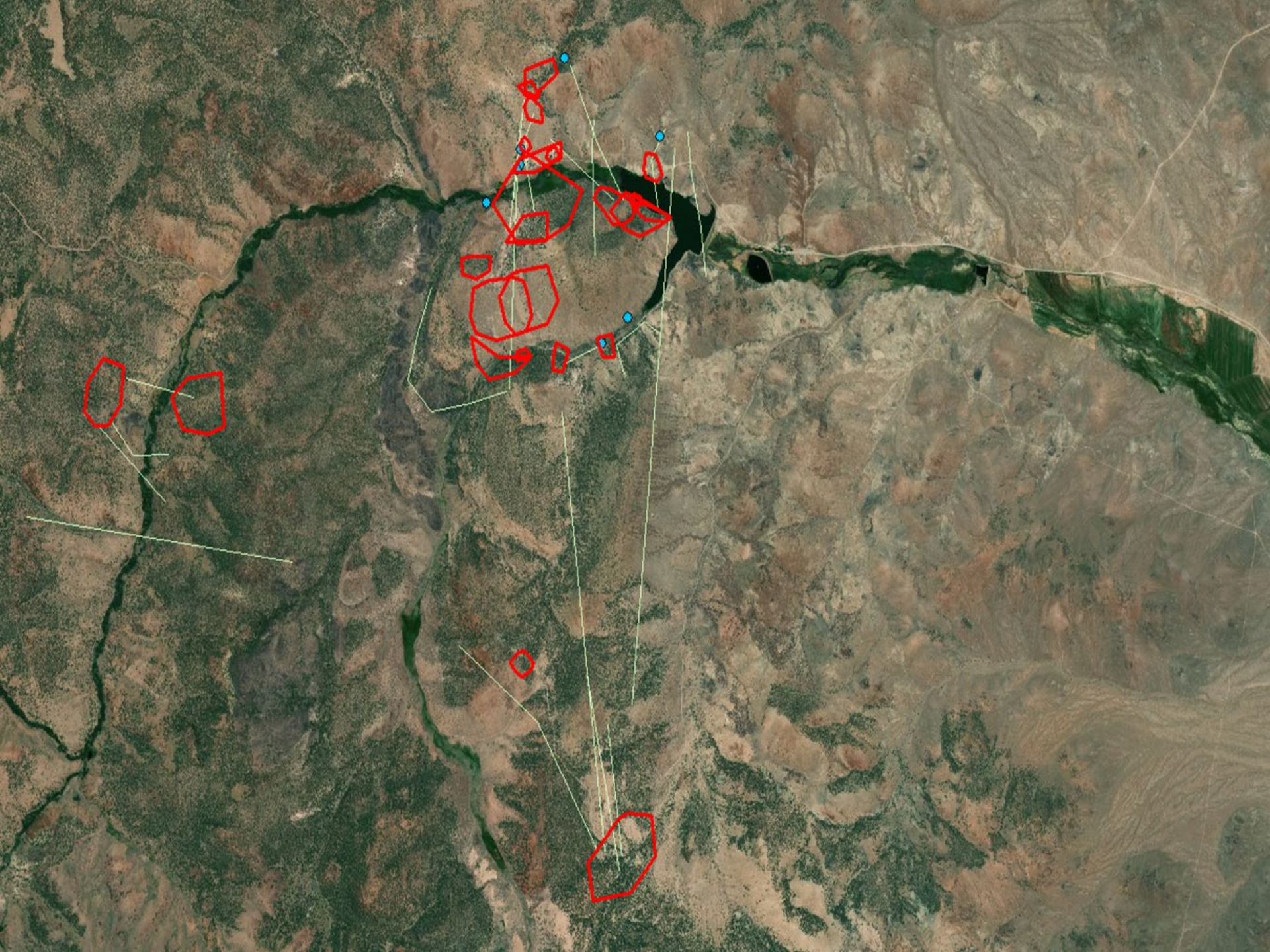


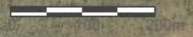
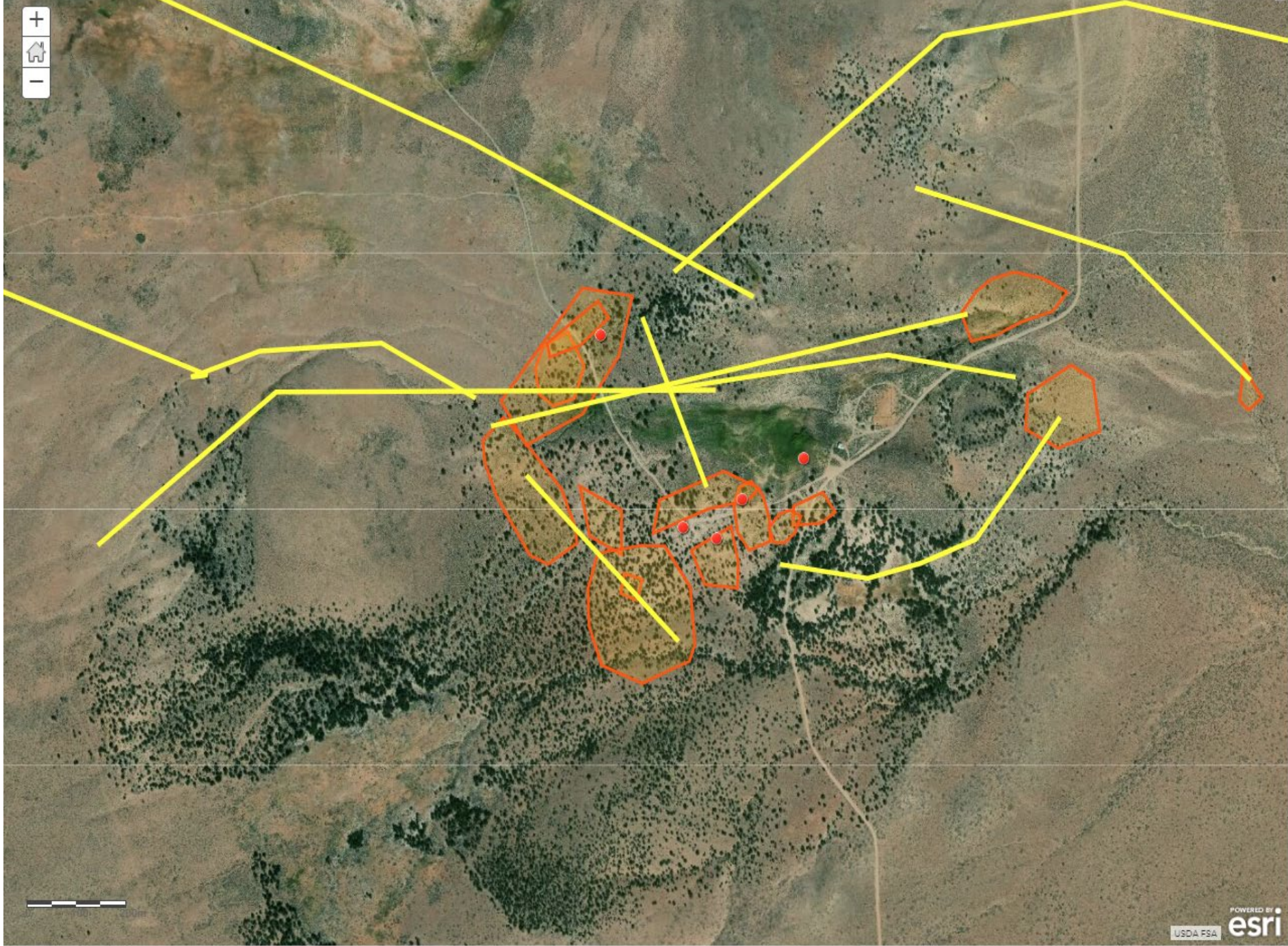


Natural History









PIJA_PineNuts_StoryMap

gbbo.maps.arcgis.com/home/webmap/viewer.html?webmap=ec114dfcdf94c4fa6a115155dcef2c5

Apps | Inbox - Pers | Inbox - Comm | Facebook | AGOL - GBBO | AGOL - DCCC | Gmail | YouTube | Maps | Reading list

Home ▾ PIJA_PineNuts_StoryMap [✎](#) [Open in new Map Viewer](#) [New Map](#) [Create Presentation](#) John ▾

[Details](#) [Add ▾](#) [Basemap](#) [Analysis](#) [Save ▾](#) [Share](#) [Print ▾](#) [Directions](#) [Measure](#) [Bookmarks](#)

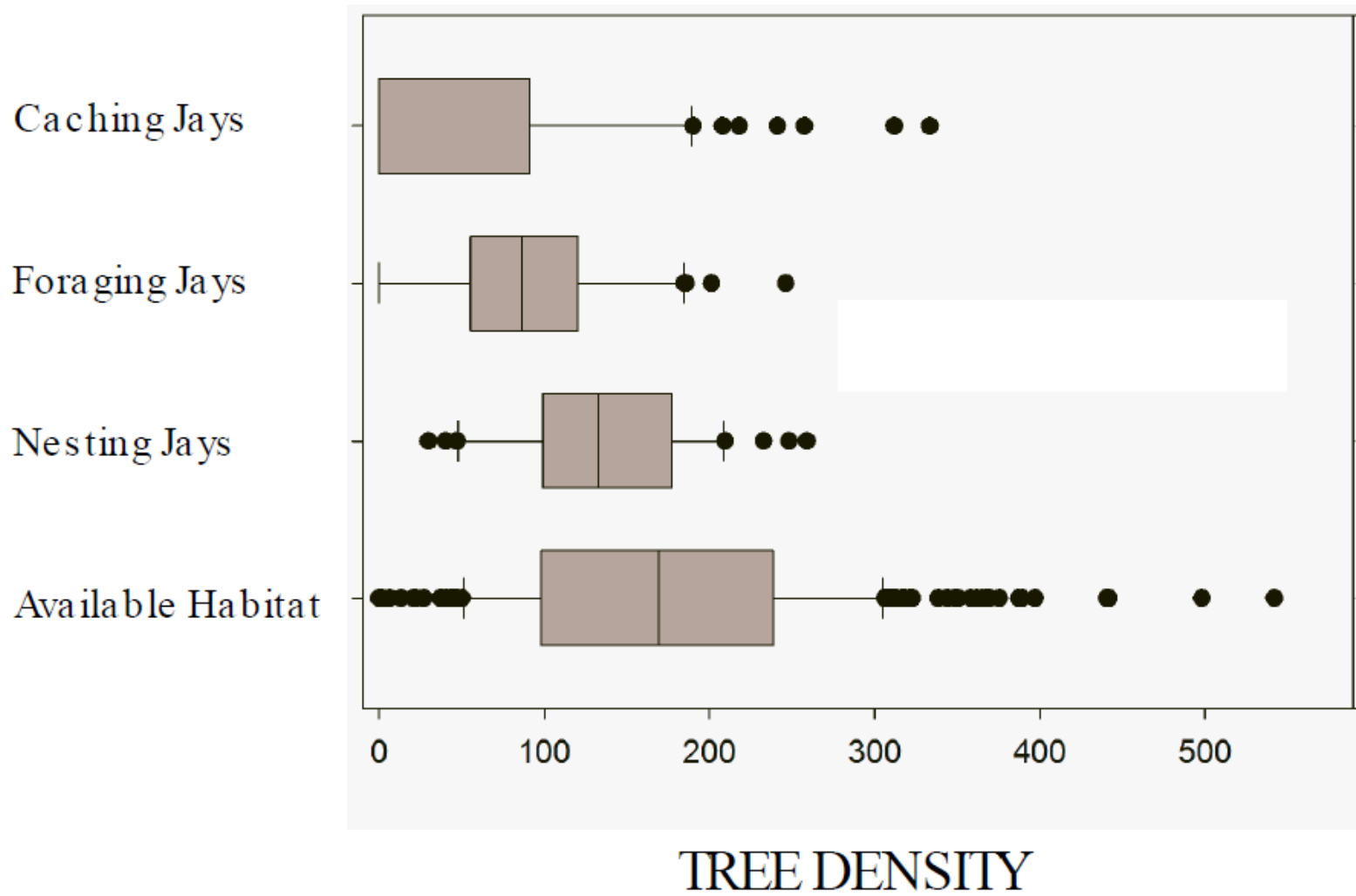
[About](#) [Content](#) [Legend](#)

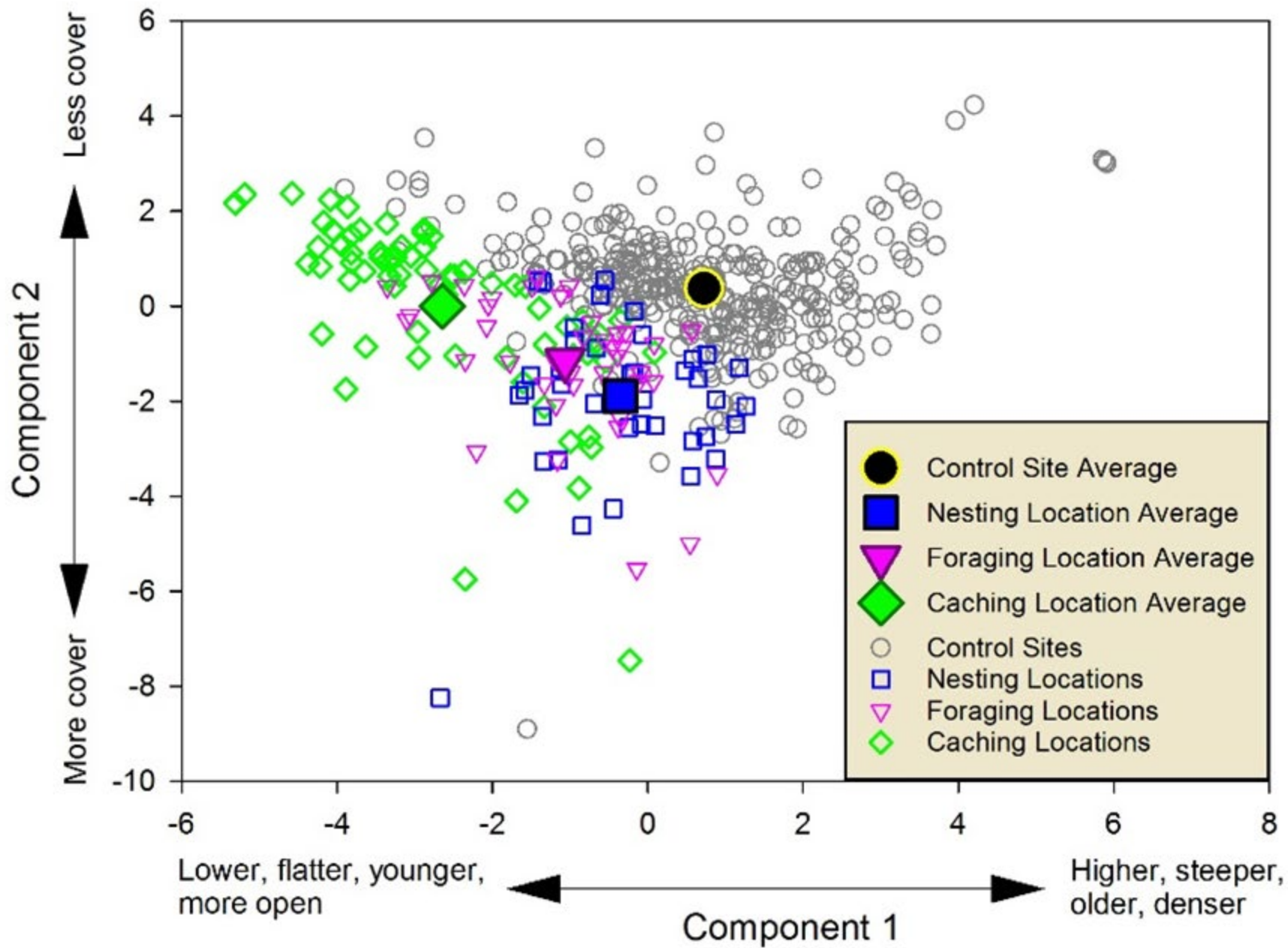
Contents

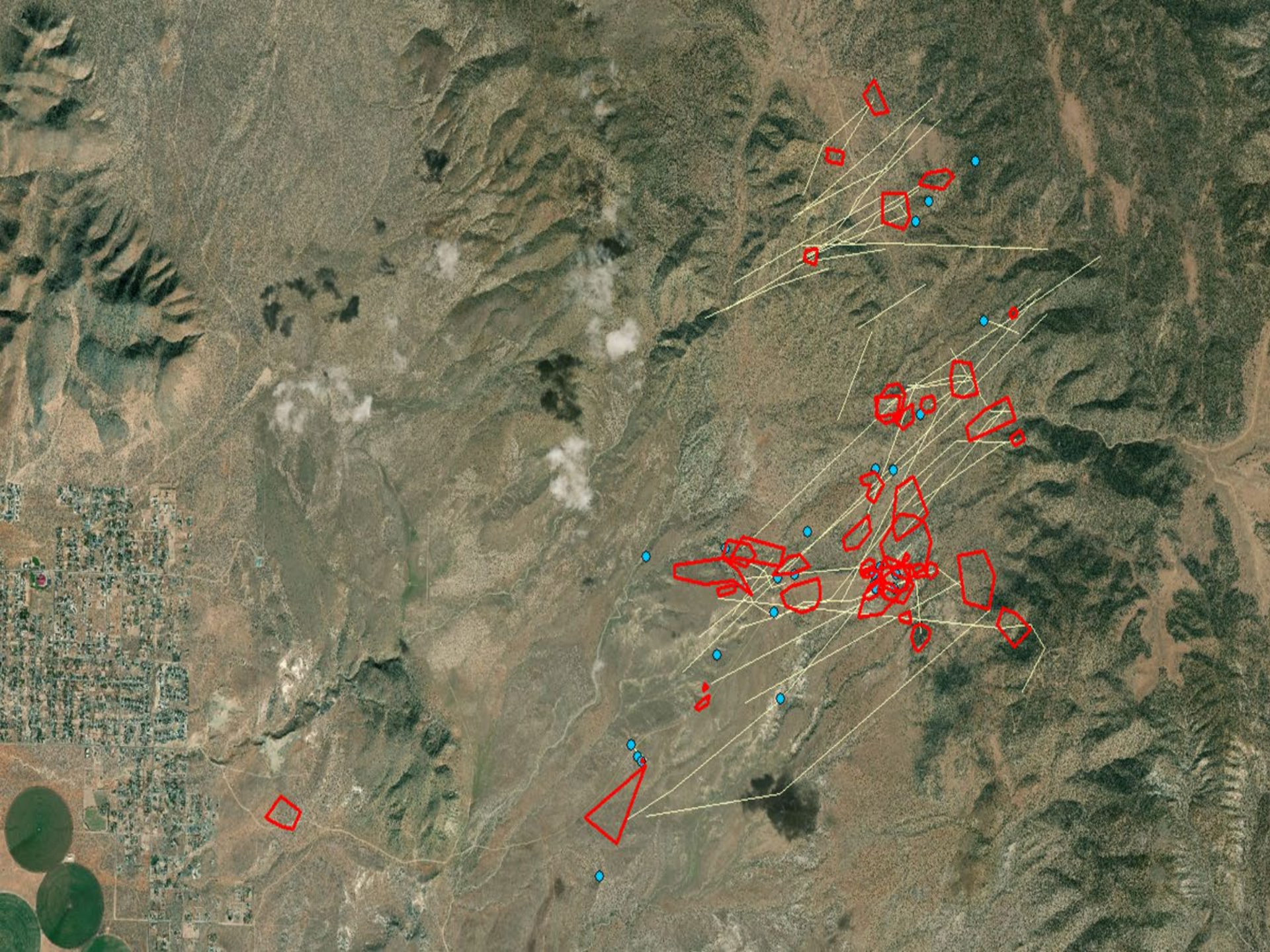
- PIJA PineNuts 2018 StoryMap - Point
- PIJA PineNuts 2018 StoryMap - Line
- PIJA PineNuts 2018 StoryMap - Polygon
 - Unable to Determine
 - Undet. Ground Activity
 - Loafing
 - Retrieving Cache
 - Foraging in Trees
 - Other (Comment)
 - Foraging on Ground
 - Caching
 - Nesting
 - Roosting
 - Other
- Imagery

Trust Center | Contact Esri | Report Abuse

EagleView, Earthstar Geographics | **POWERED BY** **esri**

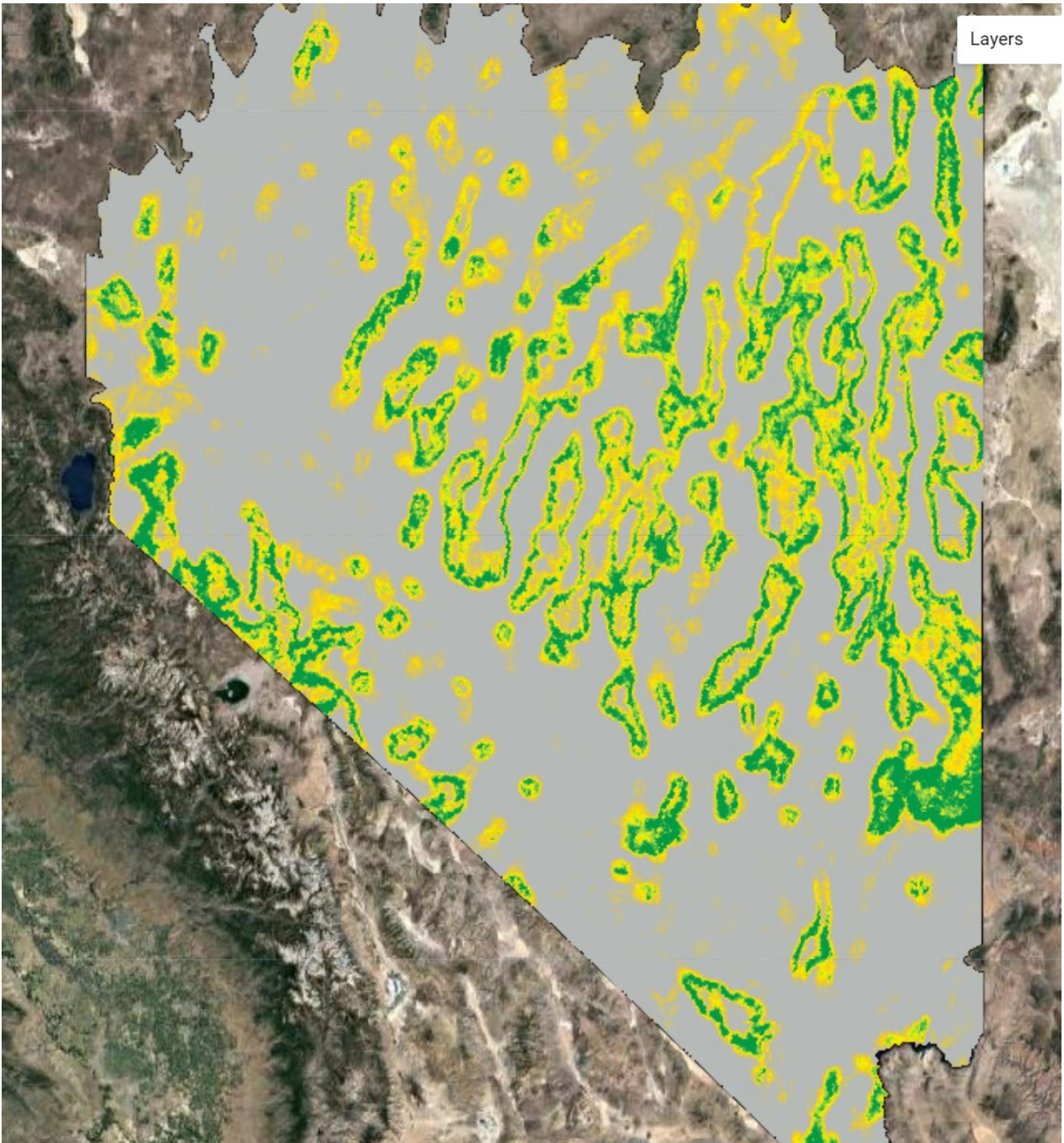


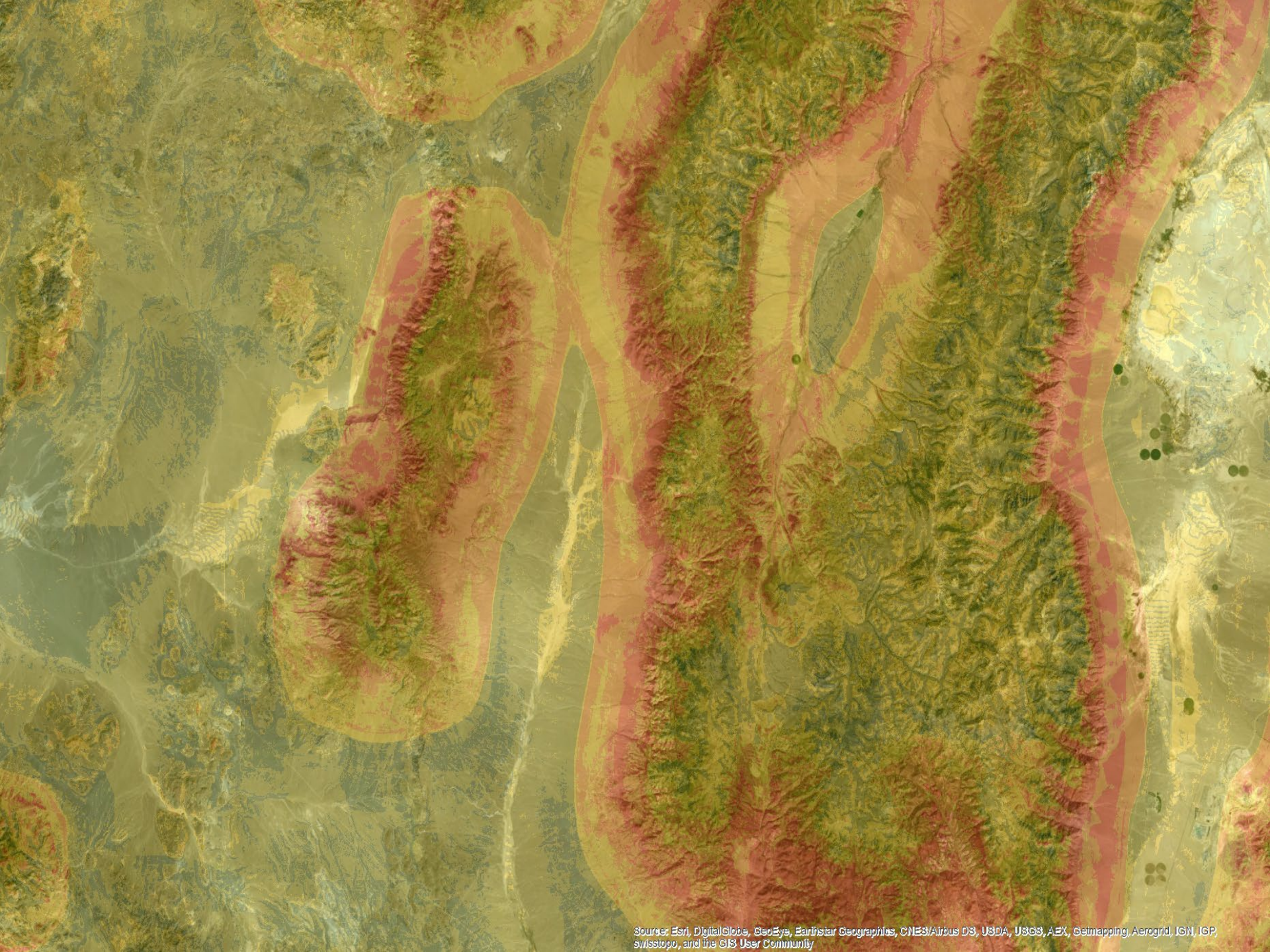






Layers







23.73 inHg - 59°F) 04/11/2013 06:47PM MYCAMERA

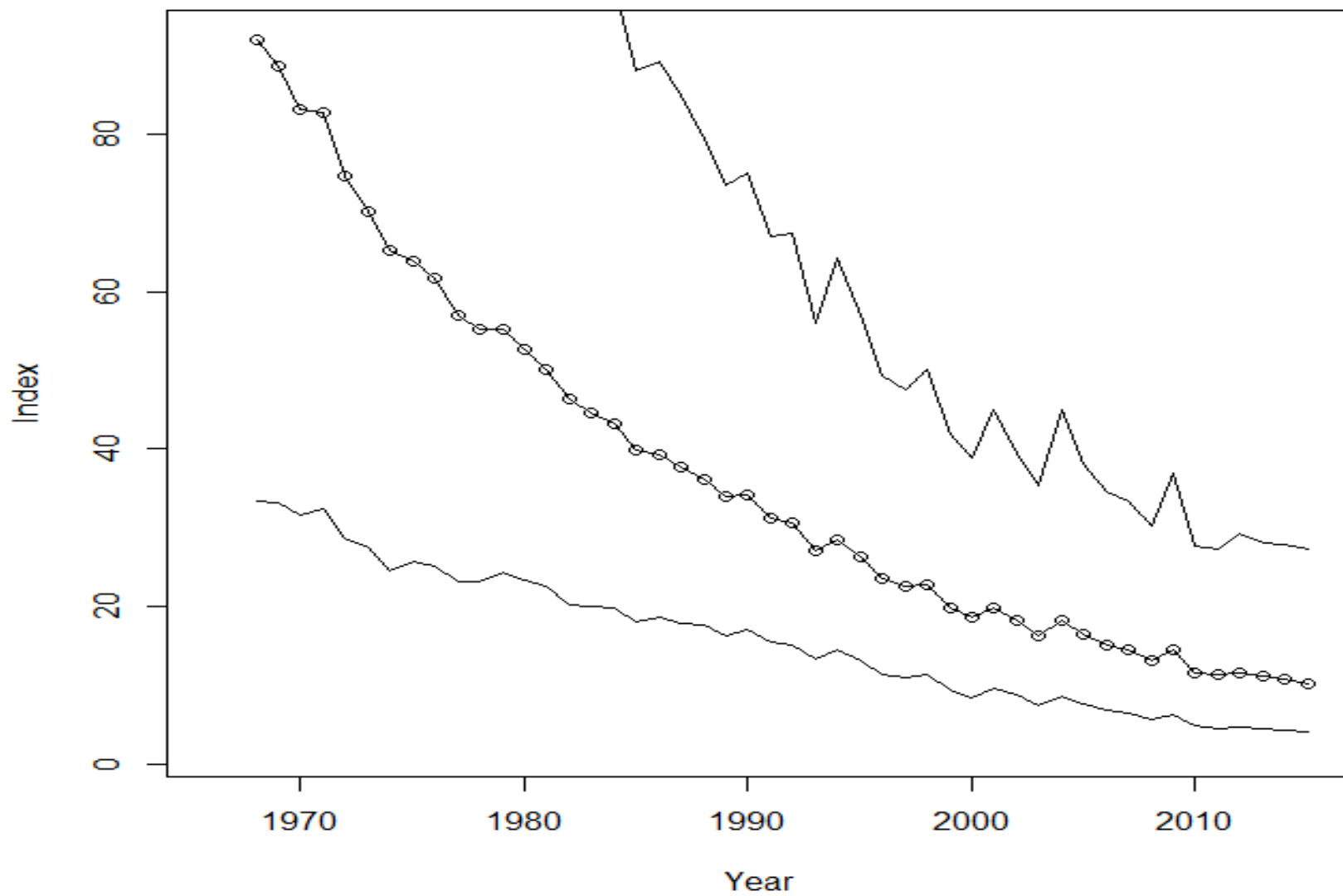








Trend

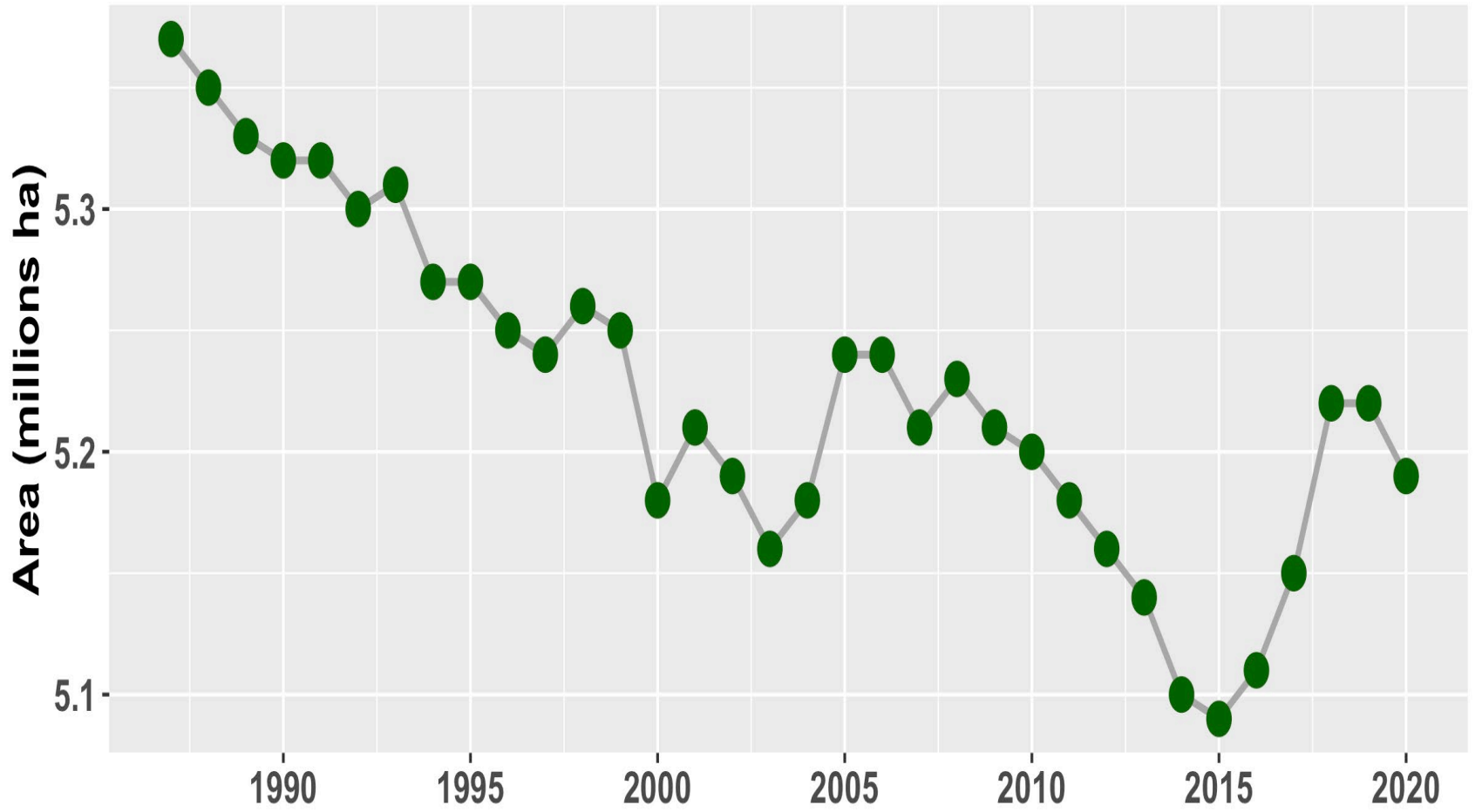


Hypotheses for Declines

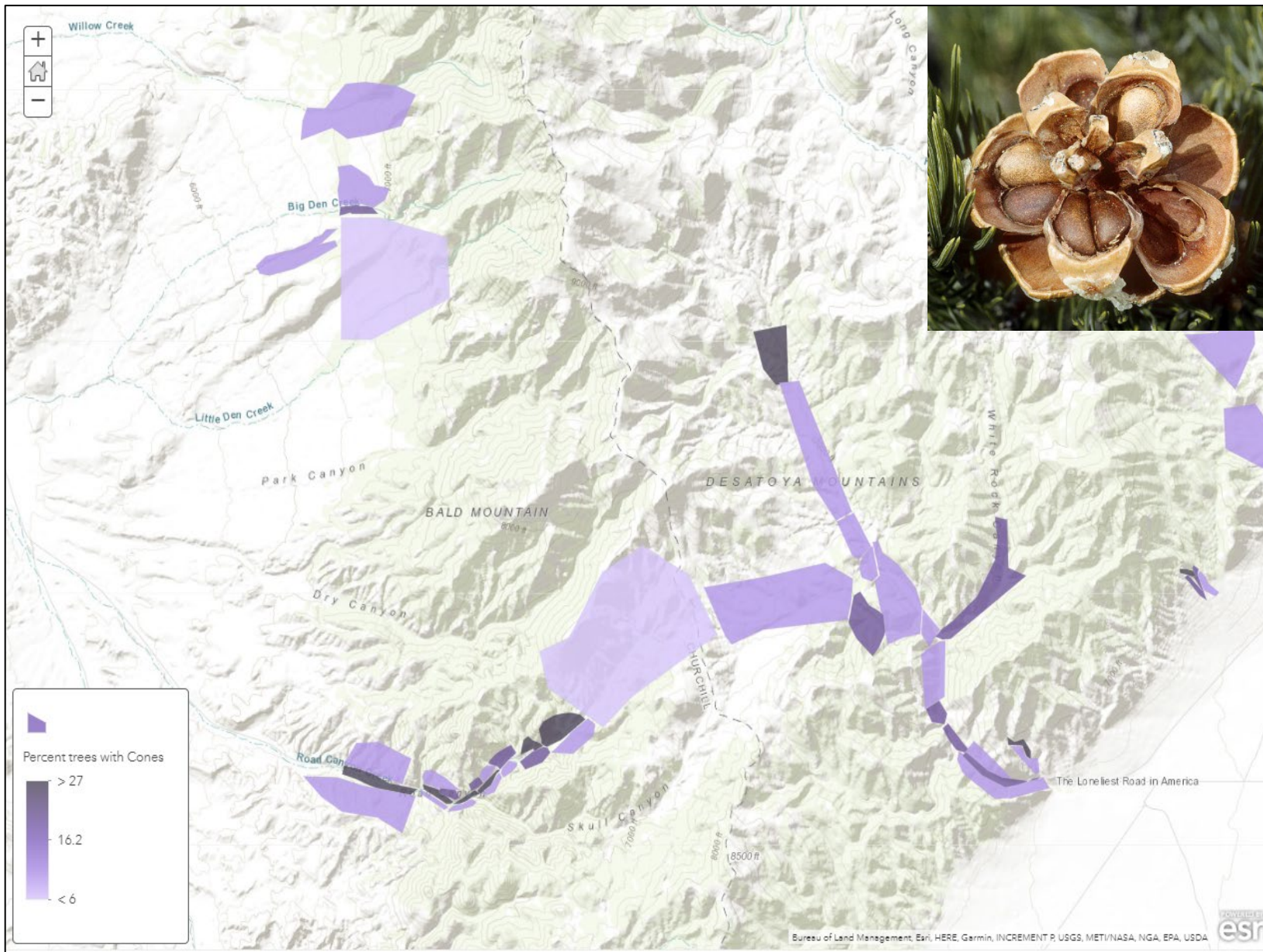


Photos: R. Tausch



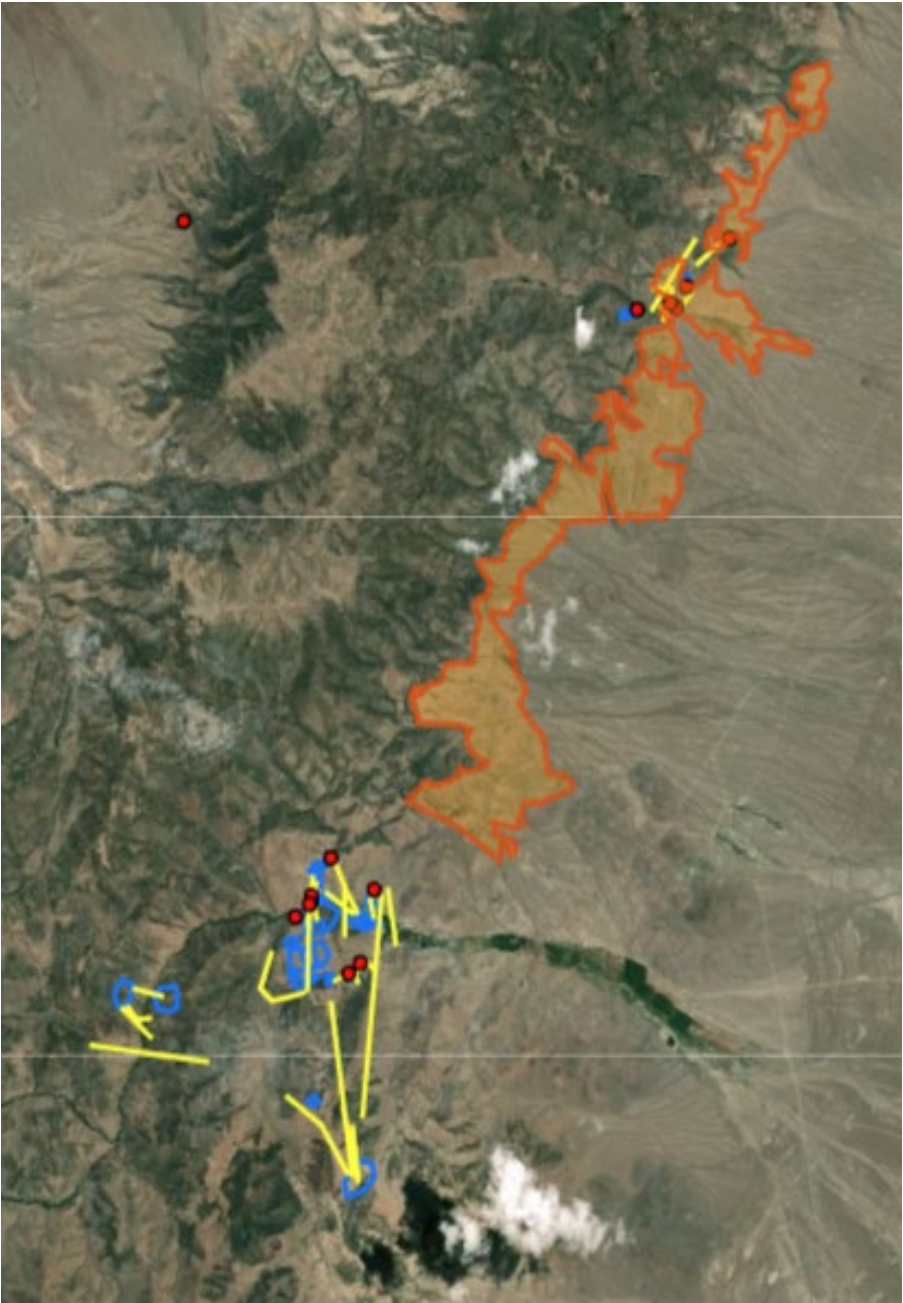


priliminary non-validated models



Role of Management?





Conservation Strategy for the
Pinyon Jay (*Gymnorhinus cyanocephalus*)



Photo by Scott Somershoe

Version 1, February 2020



Conservation

Pinyon Jay Working Group

<https://partnersinflight.org/resources/conservation-strategy-for-pinyon-jay>

Pinyon Jay Survey Protocol for Landscape Applications¹

Version 2.0 (Final)

Pinyon Jay Working Group



Photo: Carlos González Sanchez

PROJECT-LEVEL PROTOCOL FOR PINYON JAY OCCURRENCE AND CLEARANCE SURVEYS

Kelly Colegrove, Great Basin Bird Observatory
John Boone, Great Basin Bird Observatory
Elisabeth Ammon, Great Basin Bird Observatory



Photo by Great Basin Bird Observatory

February 2024
-DRAFT-

**Petition to List the Pinyon Jay (*Gymnorhinus cyanocephalus*)
as Endangered or Threatened Under the Endangered Species Act**



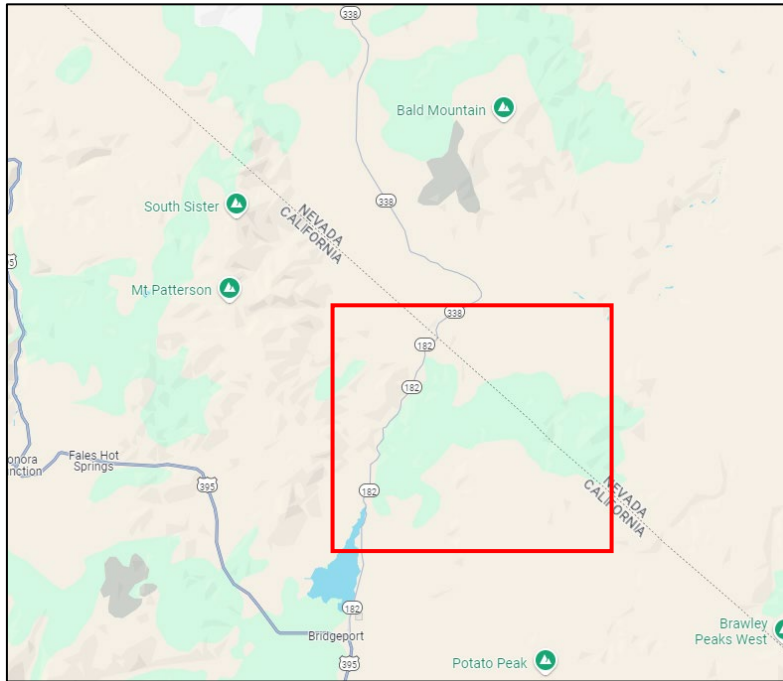
Photo: Mike Lewinski, Taos, NM

**Submitted to the U.S. Secretary of the Interior
acting through the U.S. Fish and Wildlife Service**

April 25, 2022

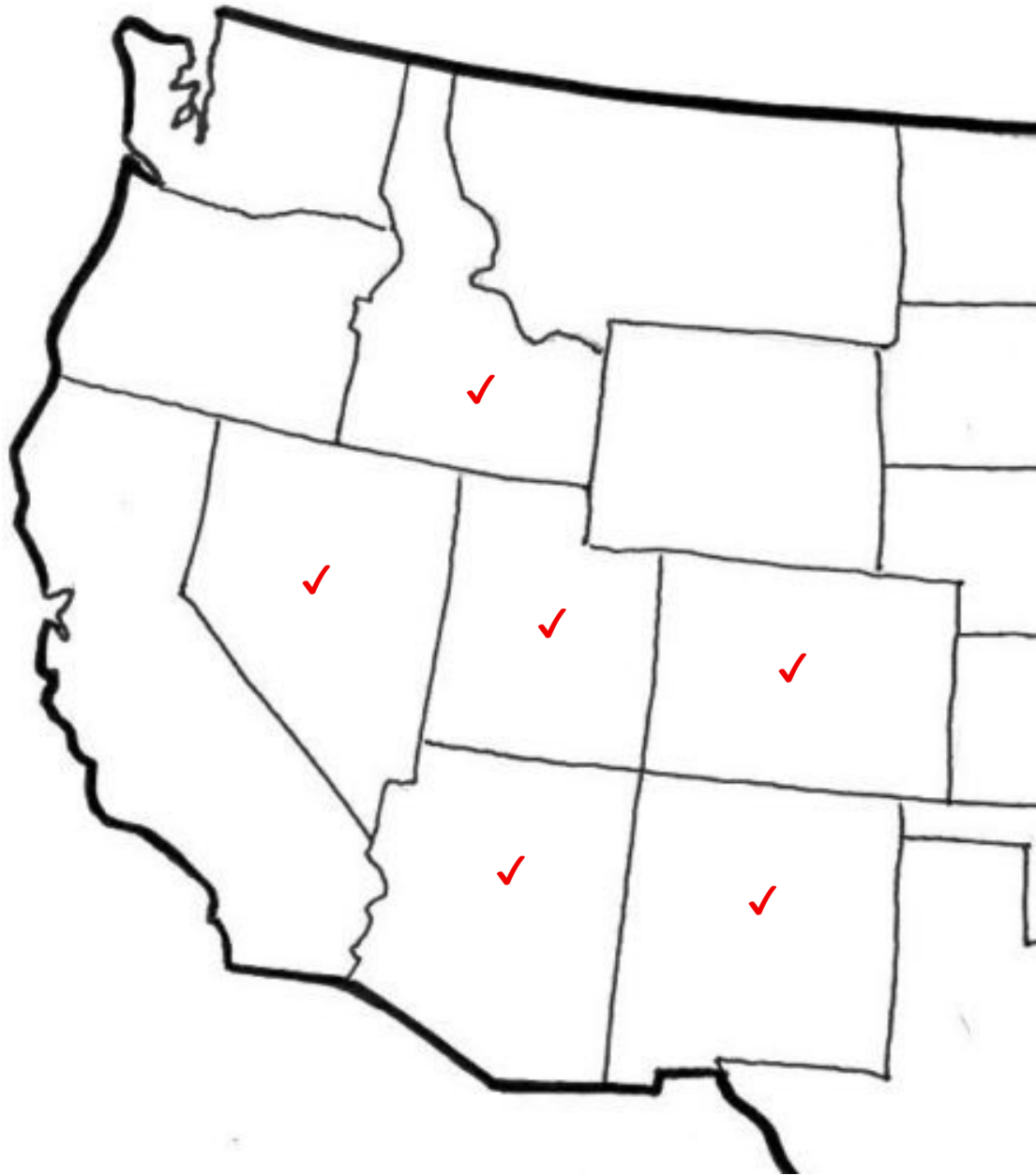
Masonic Mts. Forest Health Project

- USFS Rocky Mt. Research Station
- UNR
- Yale
- Washoe Tribe
- GBBO
- Others...



- Landscape “vision”
- Treatments for Woodland Health and Resilience
- Monitoring Toolkit
- Citizen Involvement



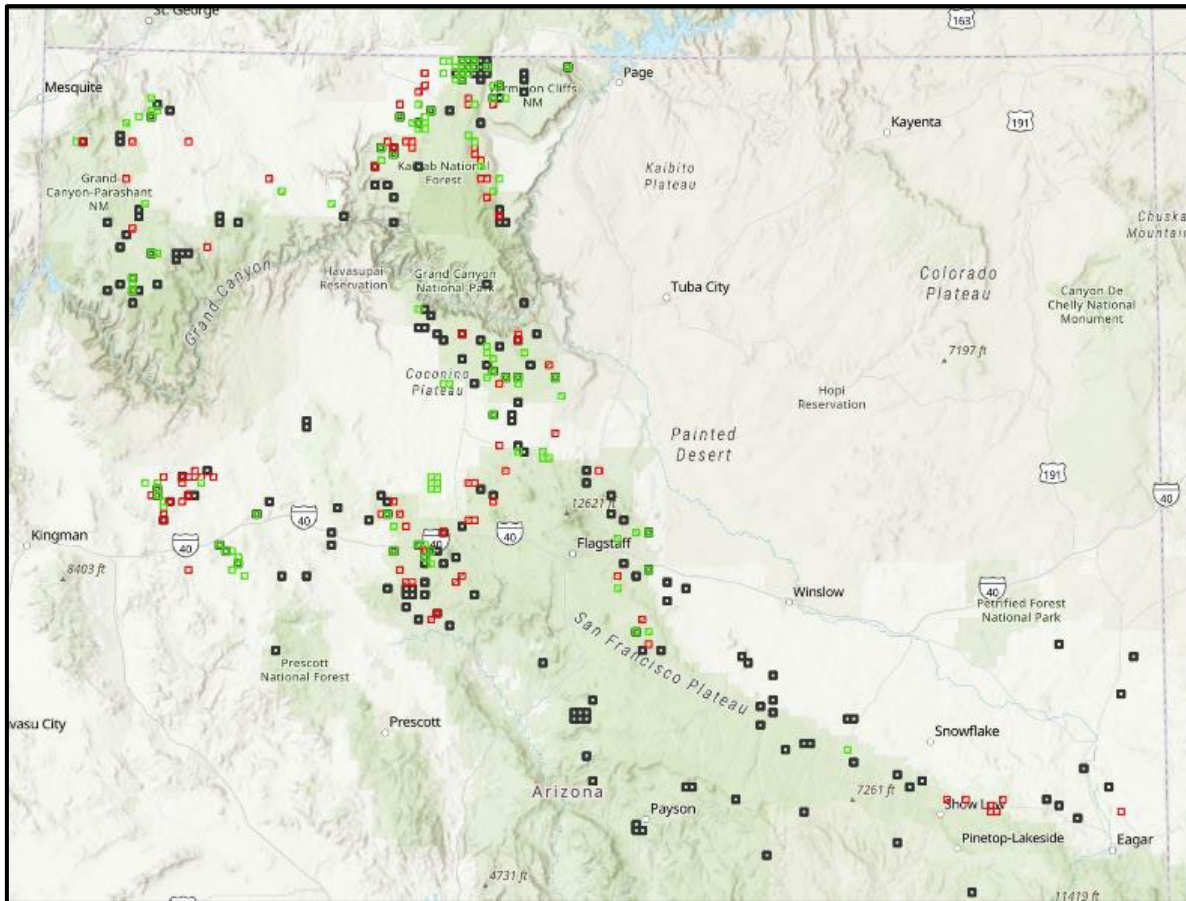






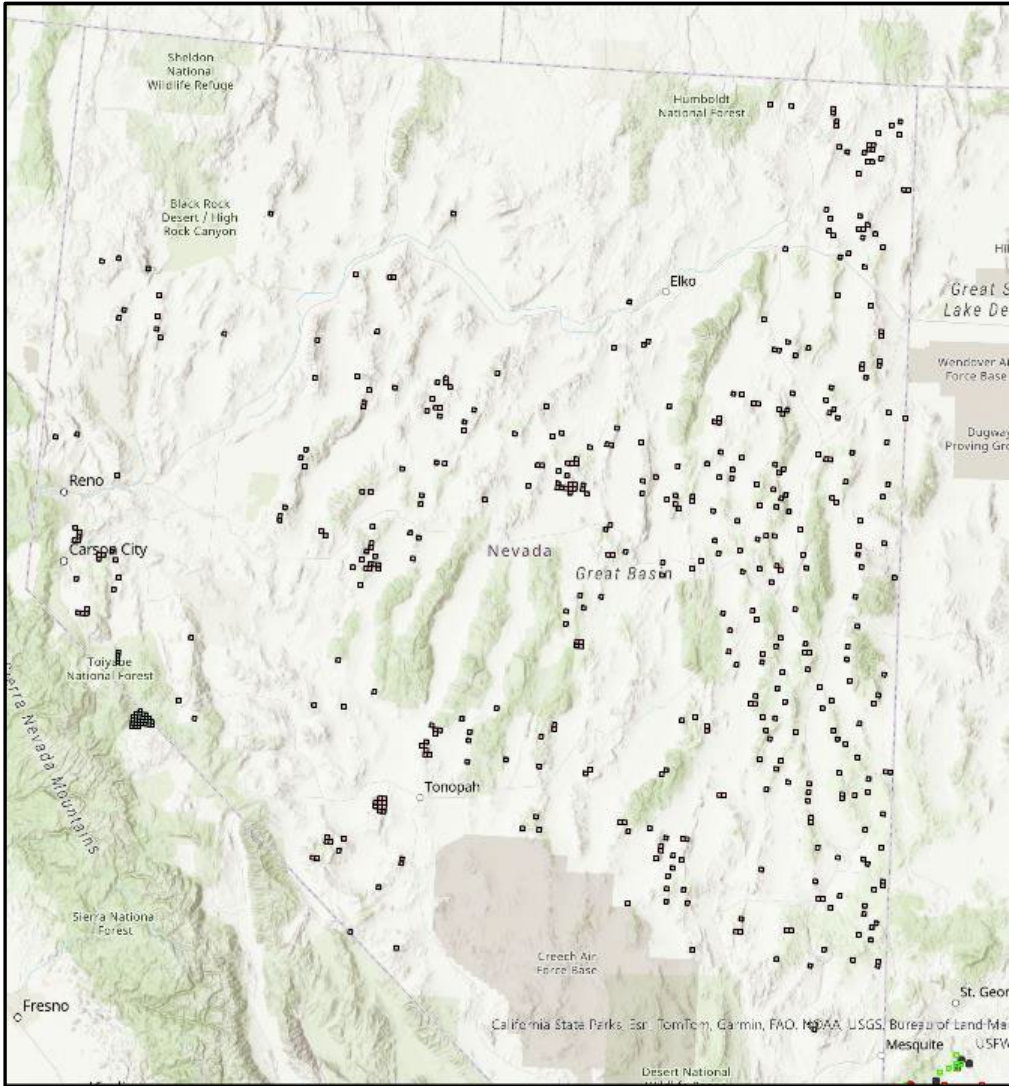
Great Basin Bird Observatory
Pinyon Jay Projects

Landscape-level survey plots in Arizona since 2021



424 plots
through
2024

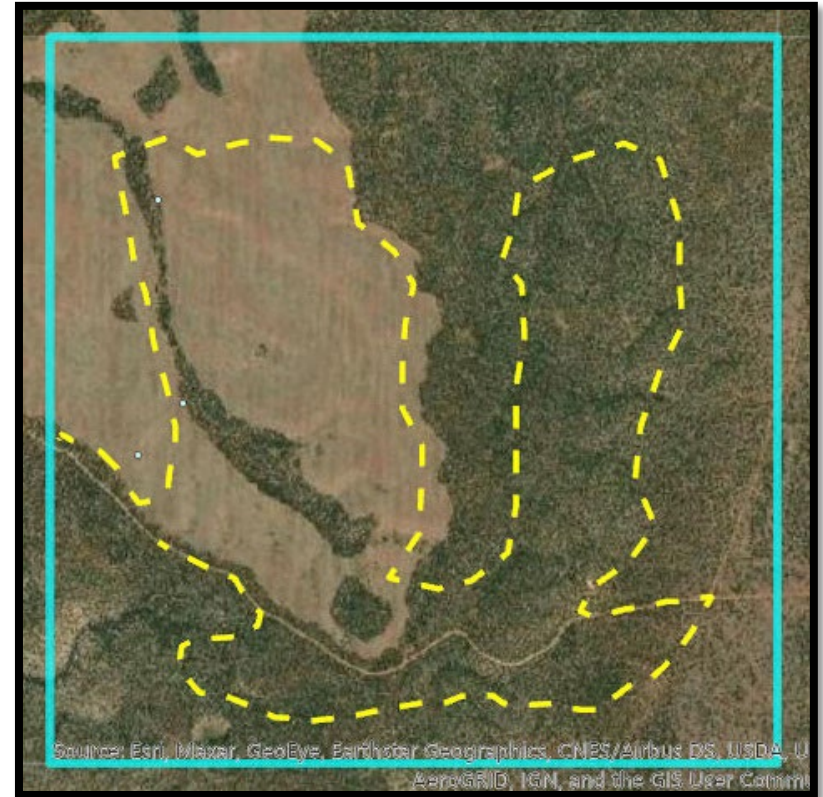
Breeding
colony
searches in
2024



Surveys in Nevada and California 2023/2024

Survey Protocol

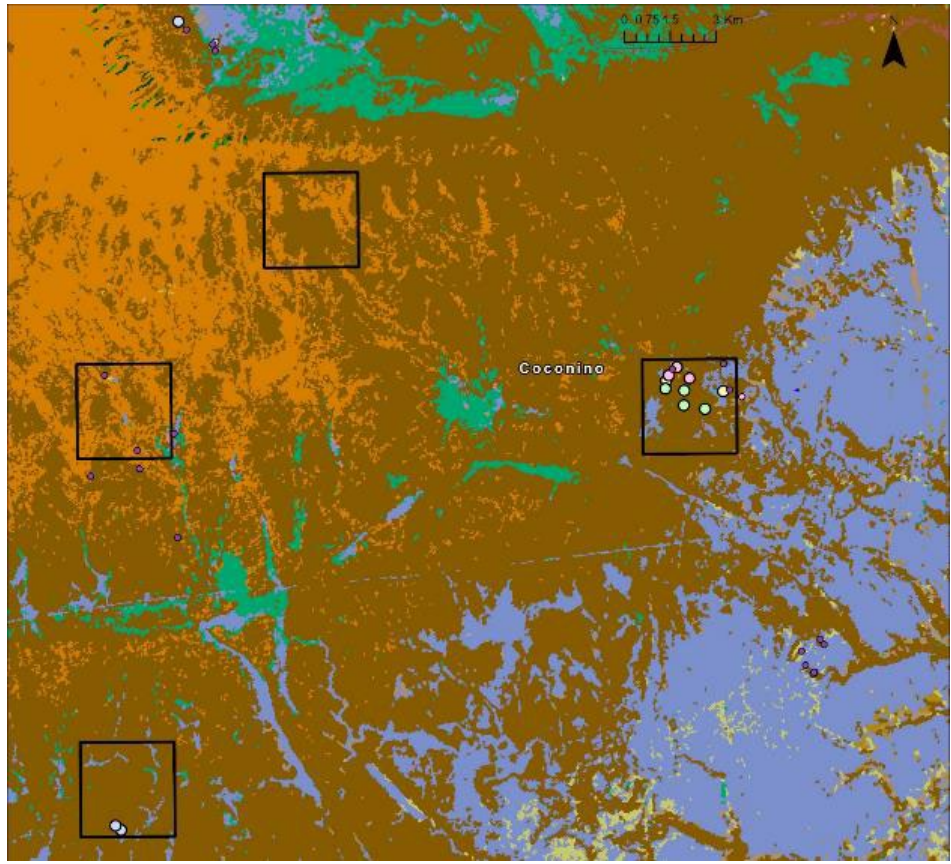
- 2.5 x 2.5km plots for sampling unit
- Area search approach
- Minimum survey time
- Three separate survey visits to a given plot to confirm absence
- Record multiple flock locations and activity types where possible



Pinyon Jay plot survey results
Location by activity

- Flying
- Foraging in Trees
- Foraging on Ground
- Perching
- Unknown or Other

□ Plot boundary



Nesting colony sites

▲ Nest Data



Ernst & Young, Army Geograph, GeoTechnologies, Inc. 1971-2008, USGS
Bureau of Land Management, EPA, NPS, USFWS, USACE, and other agencies
USFWS, 1999

Wolf Hole
Lake



Ernst & Young, Army Geograph, GeoTechnologies, Inc. 1971-2008, USGS
Bureau of Land Management, EPA, NPS, USFWS, USACE, and other agencies



Home

About Pinyon Jays

Collect Data

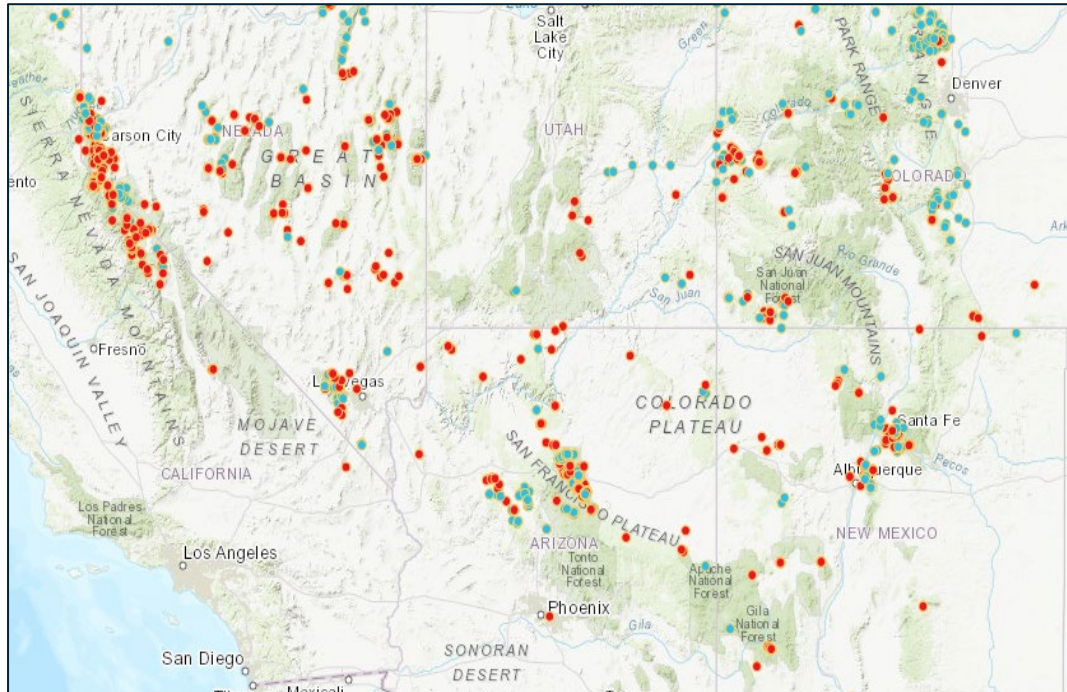
Survey Results

Resources

FAQs

GBBO

Archival Data Input





John Boone (boone@gbbo.org)

Kelly Colegrove (colegrove@gbbo.org)