

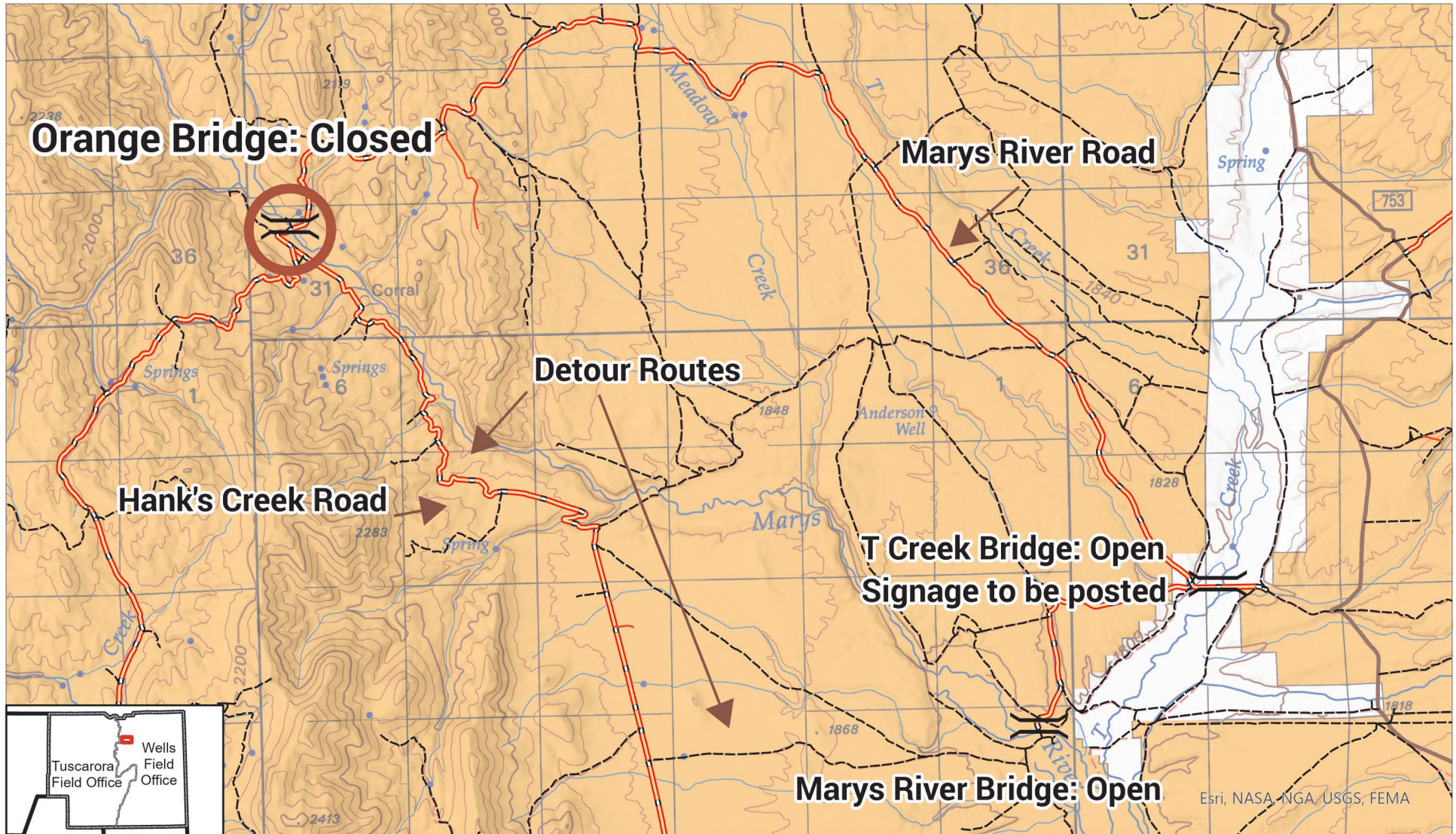


Orange Bridge Closure

Bureau of Land Management
Wells Field Office
3900 Idaho Street
Elko, Nevada 89801
775-753-0200



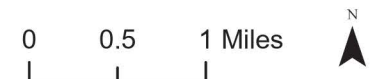
5/16/2024



- Orange Bridge Closure
- Bridges
- County Route

- BLM Road
- Other Routes
- reclaiming

- Bureau of Land Management
- Private



No warranty is made by the Bureau of Land Management as to the accuracy, reliability, or completeness of the maps displayed in this document or the data from which they are based for individual use or aggregate use with other data.