



**NATIONAL
CONSERVATION
LANDS**

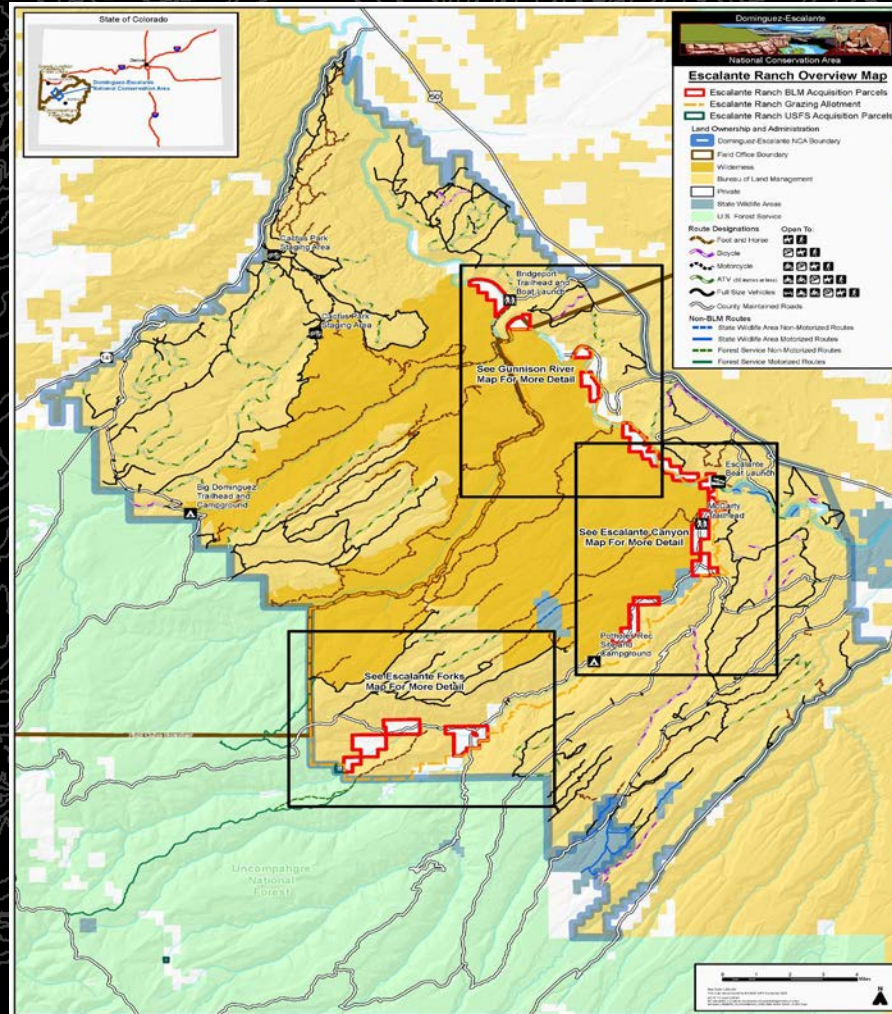


Land Tenure – Escalante Ranch Acquisition





Land Tenure – Escalante Ranch Acquisition





OVERVIEW Escalante Ranch Acquisition:

- 100+ year history of cattle ranching in Escalante Canyon and along the Gunnison River
- 4,012 acres of non-Federal lands and interests in lands, including water rights
- Approximately 900 of the acres are irrigated (pasture and hay fields)
- 70 cfs of water rights from the Gunnison River and Escalante Creek
- Escalante Ranch is a conglomeration of smaller homestead parcels
- Multiple homes on the property

WHY ?

- Surrounded by the Dominguez-Escalante NCA
- Willing Seller
- Purpose of acquisition is to protect natural and cultural resources, consolidate public land ownership, improve management efficiency, enhance conservation stewardship goals, increase outdoor recreation, and expand upon environmental education opportunities within D-E NCA.



Process:

- BLM issued a decision record for the Escalante Ranch Acquisition (Environmental Assessment DOI-BLM-CO-G030-2024-0001-EA) on February 29, 2024.
- Escalante Ranch would be purchased using funding from the Land and Water Conservation Fund (LWCF)
- The Conservation Fund (TCF) - third-party assistance, anticipated purchase summer 2024
- TCF would sell the property to BLM in early 2025.
- BLM is committed to engaging with cooperative agencies and the public for the subsequent planning efforts associated with this project.



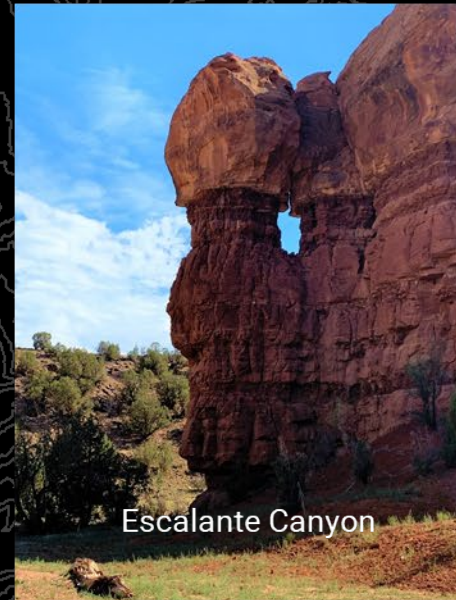
Ranch Overview



Google Earth



Gunnison River



Escalante Canyon



Escalante Forks



Escalante Creek



Resource Opportunities



Habitat Restoration



Wilderness Access



Rock Climbing Access



Historic Resources



Gunnison River Access



Water Rights & Irrigated Lands



Irrigated Orchard



Irrigated Fields



Irrigation Infrastructure





House Structures



Escalante Canyon Houses



Main Ranch Headquarters



Bridgeport House



Escalante Forks House





Other Structures



Bridges



Range Improvements



Farm Equipment



Opportunities & Challenges

- Consolidate federal ownership
 - Eliminate resource degradation or development
 - Provide new and/or improved recreational access (land and river)
 - Restore wildlife and riparian habitat
 - Protect cultural and natural resources
 - Resolve 22 encroachments
 - Expand environmental education
- Large amount of staff time both during and post-acquisition
 - Unique property with many assets such as structures and water rights
 - Management of Historically Irrigated Lands
 - Sizeable funding request
 - Dual-agency acquisition
 - Partner organizations both during and post-acquisition
 - Vision and communication of long-term management



Land Tenure – Escalante Ranch Acquisition

BLM is considering forming a RAC Subcommittee to advise the BLM if Escalante Ranch is acquired

Considerations:

- ✓ Is a Land Use Plan amendment required?
- ✓ What issues would benefit from a subcommittee's consideration?
- ✓ What RAC members may want to serve on a subcommittee?
- ✓ Who might BLM consider for subcommittee service?
- ✓ How often does the subcommittee need to meet?
- ✓ How long does the subcommittee need to meet?
- ✓ What products will the subcommittee be producing? (reports, recommendations, etc.)



**NATIONAL
CONSERVATION
LANDS**



Questions? Comments?



DOMINGUEZ-ESCALANTE
NATIONAL CONSERVATION AREA