



Dominguez – Escalante National Conservation Area Business Plan and Implementation Schedule





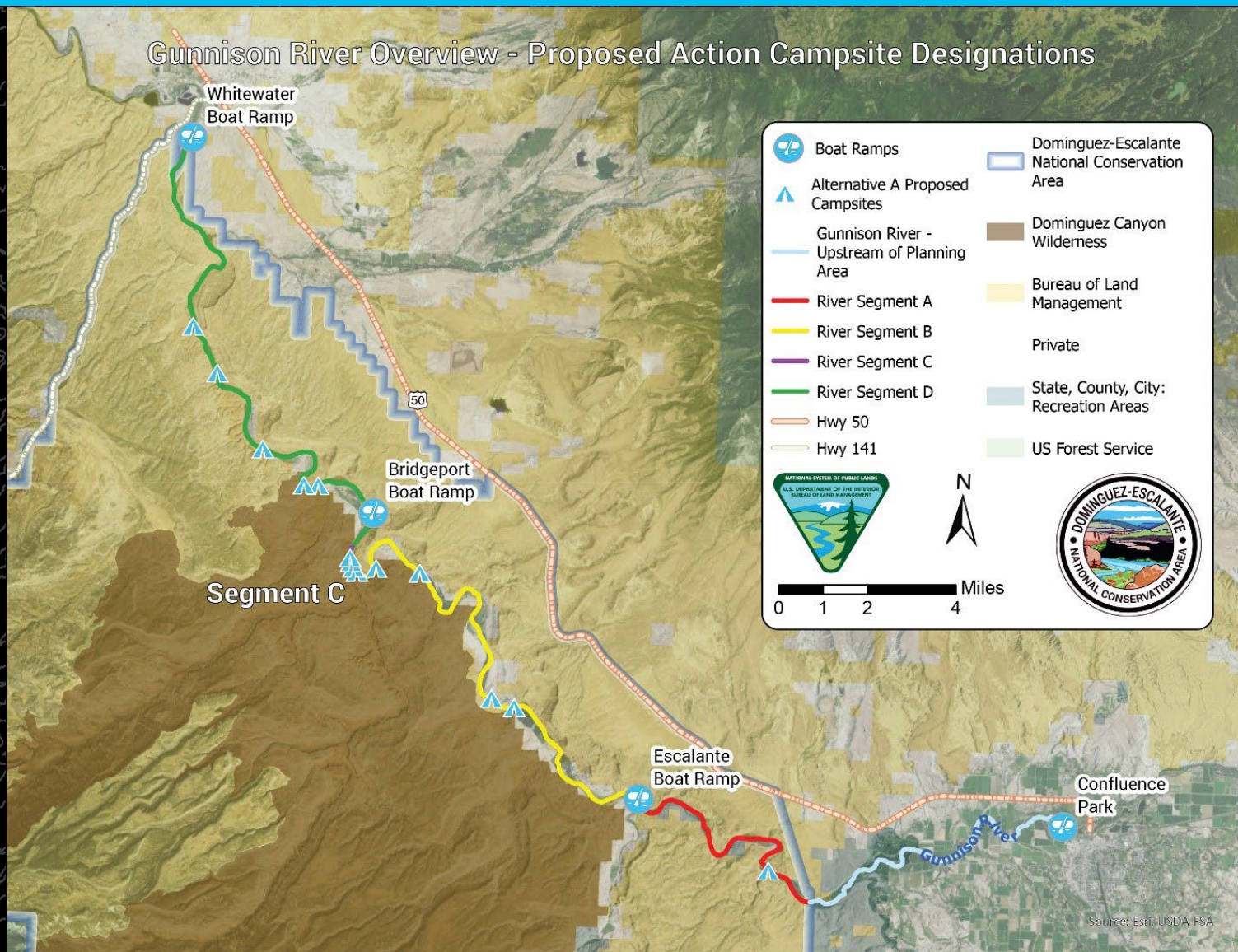
Dominguez-Escalante NCA Discussion Topics

1. Update on the Gunnison River Campsite Designation, Reservation System, and Commercial Allocation System Environmental Assessment
2. Update on the Dominguez-Escalante NCA Draft Business Plan





Gunnison River Overview - Proposed Action Campsite Designations





Timeline of Lower Gunnison River Campsites EA

January 2019 – Internal scoping with the BLM Interdisciplinary Team.

Spring 2020 – Project concept posted to ePlanning to solicit public feedback. The BLM received comments from commercial outfitters, community members, individual recreationists, and non-profit organizations.

Spring 2021 – Project concept presented to the Southwest District RAC.

January 2023 – Project presented to the Northwest District RAC.

March 2023 – Discussed the need to develop a Business Plan.

June-July 2023 – Public comment period on draft EA.

November 3, 2023 – FONSI signed.

2024 - Campsite designation implementation planned for 2024 season.

2025 - Reservation and fee implementation planned for 2025 season (pending Business Plan).





**NATIONAL
CONSERVATION
LANDS**



Questions? Comments?



DOMINGUEZ-ESCALANTE
NATIONAL CONSERVATION AREA



Update on the Dominguez-Escalante National Conservation Area Business Plan



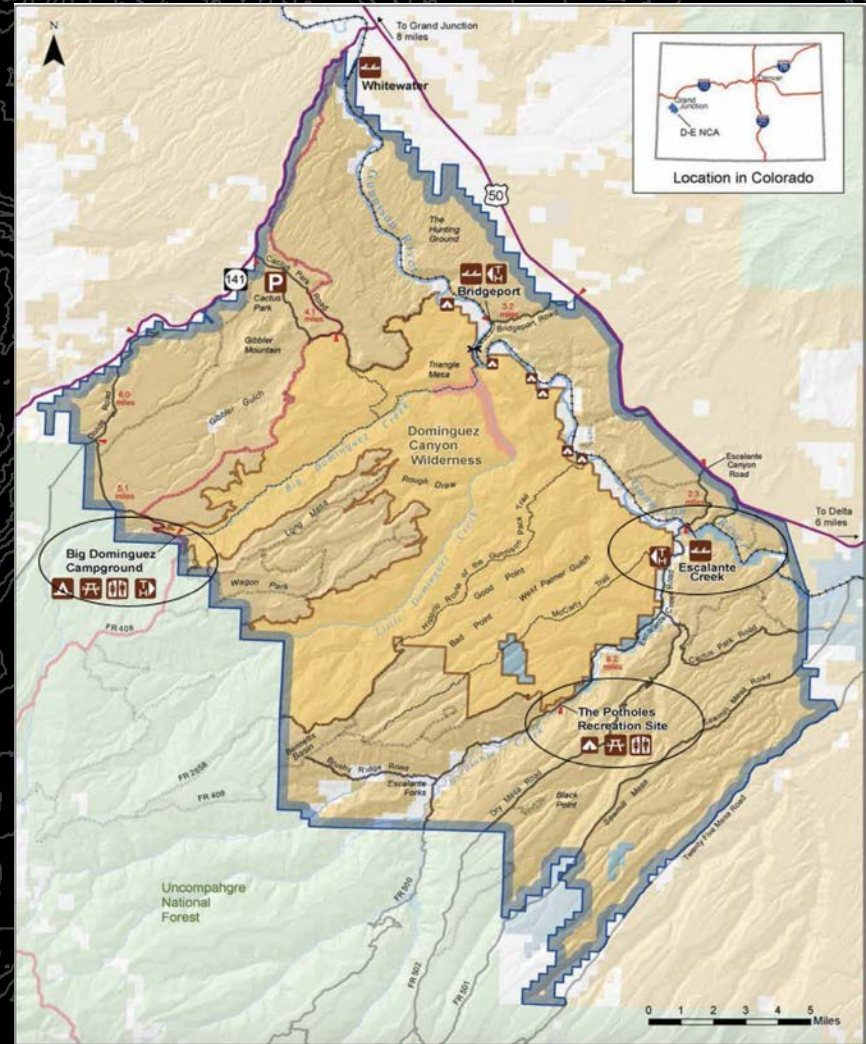
NATIONAL CONSERVATION LANDS



Draft Dominguez-Escalante National Conservation Area Business Plan

U.S. Department of the Interior
Bureau of Land Management

Grand Junction and Uncompahgre Field Offices





Dominguez-Escalante NCA Business Plan (Review)

Federal Lands Recreation Enhancement Act of 2004

1. Expanded Amenity Fees
2. Special Area Fee

- Proposed campsite fee = \$20/night (two vehicles included). If a site can accommodate it, additional vehicles would be charged \$10/vehicle (up to five).
- Special Area fee for campsites along the Gunnison River:
 - \$20/night for a small group (1-5 people)
 - \$50/night for a medium group (6-14 people)
 - \$100/night for a large group (15-25 people)
- Recreation.gov service fee of \$6-8 per reservation (future)
- Any future fee increases will be based on the Western US Consumer Price Index (CPI)





Dominguez-Escalante NCA Business Plan – Use of Recreation Fees

Facilities				
Expanded amenity Sites	Quantity	Item Price	Total Price	20-year amortization
Vault Toilet	3	\$50,000/each	\$150,000	\$7,500
Picnic Table	61	\$500/each	\$30,500	\$1,525
Fire Rings	61	\$800/each	\$48,800	\$2,440
Site Engineering	3	\$35,000/site	\$105,000	\$5,250
Vehicle	0.5	\$6,000/year	\$3,000	\$150
Site Delineation (90 ft/ site)	61	\$100/ft	\$549,000	\$27,450
Total over Time			\$886,300	\$44,315



Dominguez-Escalante NCA Business Plan – Operating Costs

Operating Costs			
Service/Item Provided	Current Cost (FY 22)	Projected Cost (expanded amenity Sites)	Projected Cost (Special Area)
Visitor Information (kiosks, brochures, and other signage)	\$1,300	\$2,400	\$600
Cleaning Supplies (toilet paper, PPE, etc.)	\$1,200	\$2,000	\$500
Weed Control	\$1,900	\$2,000	\$500
Repairs	\$1,500	\$2,400	\$600
Toilets (pumping and service)	\$11,600	\$12,000	\$3,000
Equipment	\$1,100	\$2,000	\$500
Vehicle and gas	\$6,300	\$10,400	\$2,600
GS-7 Seasonal Park Ranger (80% in expanded amenity sites, 20% in Special Area)	\$30,000 (6 months)	\$50,405 (10 months)	\$12,601 (10 months)
GS-7 Full-time Park Ranger (80% in expanded amenity sites, 20% in Special Area)	\$44,000 (6 months)	\$53,451 (10 months)	\$13,363 (10 months)
Law Enforcement Support	\$13,350	\$16,000	\$4,000
Overhead/Admin (Outdoor Recreation Planner, NCA Manager, fee collection and processing* etc.)	\$6,950	\$11,200	\$2,800
Total	\$82,250	\$164,255	\$41,064



Dominguez-Escalante NCA Business Plan

March 30, 2023 – Presented the proposed D-E NCA business plan to the joint NW/SW RACs.

- Fee structure and CPI adjustments were incorporated into final business plan.

June 22, 2023 – Provided updates about the proposed D-E NCA business plan and the Lower Gunnison River Campsite Designation, Reservations and Commercial Use Allocations Environmental Assessment (EA) to the NW RAC.





**NATIONAL
CONSERVATION
LANDS**



Questions? Comments?



DOMINGUEZ-ESCALANTE
NATIONAL CONSERVATION AREA



Land Tenure – Escalante Ranch Acquisition

BLM is considering forming a RAC Subcommittee to advise the BLM if Escalante Ranch is acquired

Considerations:

- ✓ Is a Land Use Plan amendment required?
- ✓ What issues would benefit from a subcommittee's consideration?
- ✓ What RAC members may want to serve on a subcommittee?
- ✓ Who might BLM consider for subcommittee service?
- ✓ How often does the subcommittee need to meet?
- ✓ How long does the subcommittee need to meet?
- ✓ What products will the subcommittee be producing? (reports, recommendations, etc.)



**NATIONAL
CONSERVATION
LANDS**



Questions? Comments?



DOMINGUEZ-ESCALANTE
NATIONAL CONSERVATION AREA