



WYOMING

Rawlins Field Office

Recreation Fee Program Spending & Accomplishment Highlights 2021

Permits for the North Platte River



Rawlins Field Office Boat Permit Sticker

The Rawlins Field Office spent \$900 in FY21 from fee program funds for boat permit stickers for Special Recreation Permit holders using the North Platte River for commercially guided fishing. Special Recreation Permit holder numbers vary in any given year; the RFO maintains roughly 25 SRPs for the North Platte SRMA. Vessels are required to have two stickers and one placed on the trailer. Boat permit stickers are used for monitoring and using data for the N. Platte SRMA.

Campground Information Signs



Dugway Campground Visitor Sign

The Rawlins Field Office is replacing four information signs at BLM campgrounds. BLM funded eight other signs pertinent to access and safety in FY21. However, with a vacant Outdoor Recreation Planner position for 90% of FY21, the placement of the signs had to be postponed to FY22. Over \$3,000 was spent utilizing fee program funds for 12 signs. Sign cost can play a significant role in the decision process for sign replacement. One large sign alone can cost up to \$3,000.

Recreation Fee Dollars

Recreation fee dollars are an investment in outdoor recreation. Current and future generations benefit as 100% of the funds collected are reinvested in the facilities and services that visitors enjoy, use, and value.

They support and enhance:

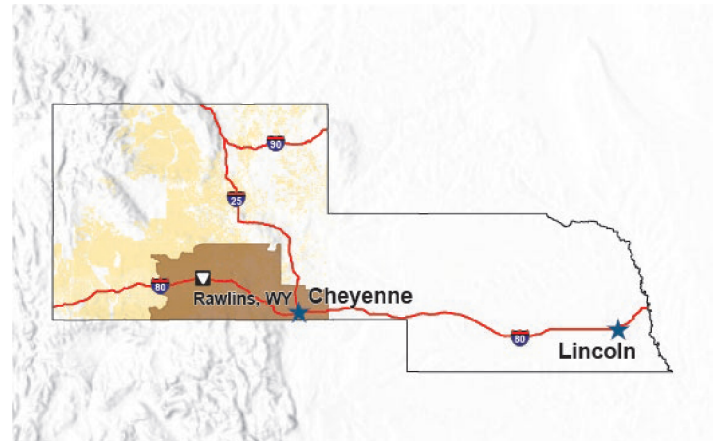
- Maintenance, repair, and facility enhancement related directly to visitor enjoyment, visitor access, and health and safety
- Interpretation, visitor information, visitor service, visitor needs assessments, and signs
- Habitat restoration directly related to wildlife- dependent recreation that is limited to hunting, fishing, wildlife observation, or photography
- Law enforcement related to public use and recreation
- Direct operating or capital costs associated with the recreation fee program



Other Accomplishments

- BLM completed a hazardous fuels reduction project and fire break early in FY21 at the Encampment River Campground.
- Pile burning associated with the slash was completed in the winter of FY22. This allowed more access to streambanks, less vegetative competition from invasive vegetation, and improved fire safety in the campground area.
- An ORP was hired at the beginning of FY22, and some future projects have already been identified.
- New hand pumps at campgrounds, with new drinking wells being drilled, will take place in FY22.

Vicinity Map



Contacts

Rawlins Field Office

Recreation Fee Program Contact

Phone Number: 307-328-4200

Email: awilliams@blm.gov

Web: <https://www.blm.gov/office/rawlins-field-office>

District Contact

Phone Number: 307-352-0256

Email: Rock_Springs_WYMail@blm.gov

Revenue & Expenditures

FY21 Revenue

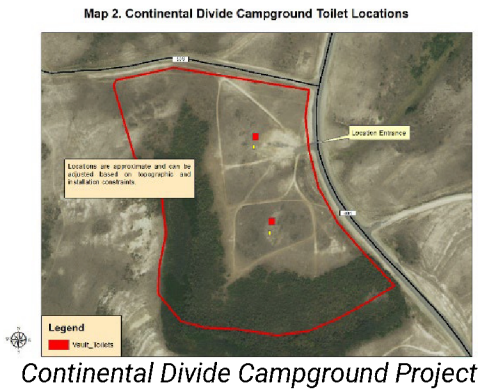
Recreation Use Permits (RUPs)	\$9,717.12
Special Recreation Permits (SRPs)	\$19,464.87
Individual Special Recreation Permits	\$0.00
Interagency Passes	\$1,960.00
Total Recreation Fee Revenue for FY21	\$31,141.99

FY21 Expenditures

Repair & Maintenance	\$384.93
Visitor Services	\$6,819.00
Law Enforcement	\$0.00
Habitat Restoration	\$0.00
Collections/Overhead	\$0.00
Total Recreation Fee Expenditures for FY21	\$7,203.93



Planned Activities



FY22 Planned Expenditures

Repair & Maintenance	\$3,000.00
Visitor Services	\$300.00
Law Enforcement	\$0.00
Habitat Restoration	\$0.00
Collections/Overhead	\$500.00
Total Recreation Fee Expenditures for FY22	\$3,800.00
FY21 End of Year Carryover	\$23,883.96
FY22 Projected Revenue	\$29,000.00

FY22 will consist of aggressive maintenance in recreation areas that have received minimum maintenance due to staffing shortages in the Recreation Department. Those areas include; campgrounds, boat ramps, clean-up at Recreation Areas, and the Continental Divide Campground in Stage II of the authorized development. There may be some administrative costs associated with monitoring organized events that take place in the field office. The Red Wash Wetlands have become a national attraction for bird watching and educational trips; BLM will implement more signage and site improvements in the future.

Connecting with Communities

The Rawlins Field Office Recreation Department connects with a majority of educational partners such as local grade schools, vocational schools, and the neighboring University of Wyoming. The Rawlins Field Office is home to many miles of the Continental Divide National Scenic Trail. We ensure open communication, and collaborate when issues arise or need addressed, that the BLM may not be aware of with partners such as the Continental Divide Trail Coalition. Partnership with community groups allows for BLM funding to help produce a product to the recreating public, that keep the public; safe, informed, and interested in more recreating opportunities.

Heavy use of hunting and fishing opportunities are abundant throughout the Rawlins Field Office, and our strongest goal externally, is to help foster economic benefit in our small communities by ensuring that our boat docks, campgrounds, and roads stay safe and are maintained in a professional manner. Increased recreation tourism is a benefit to our local economies and is becoming more prevalent and wide-spread in smaller communities surrounded by adjacent public lands with multiple recreation opportunities.

