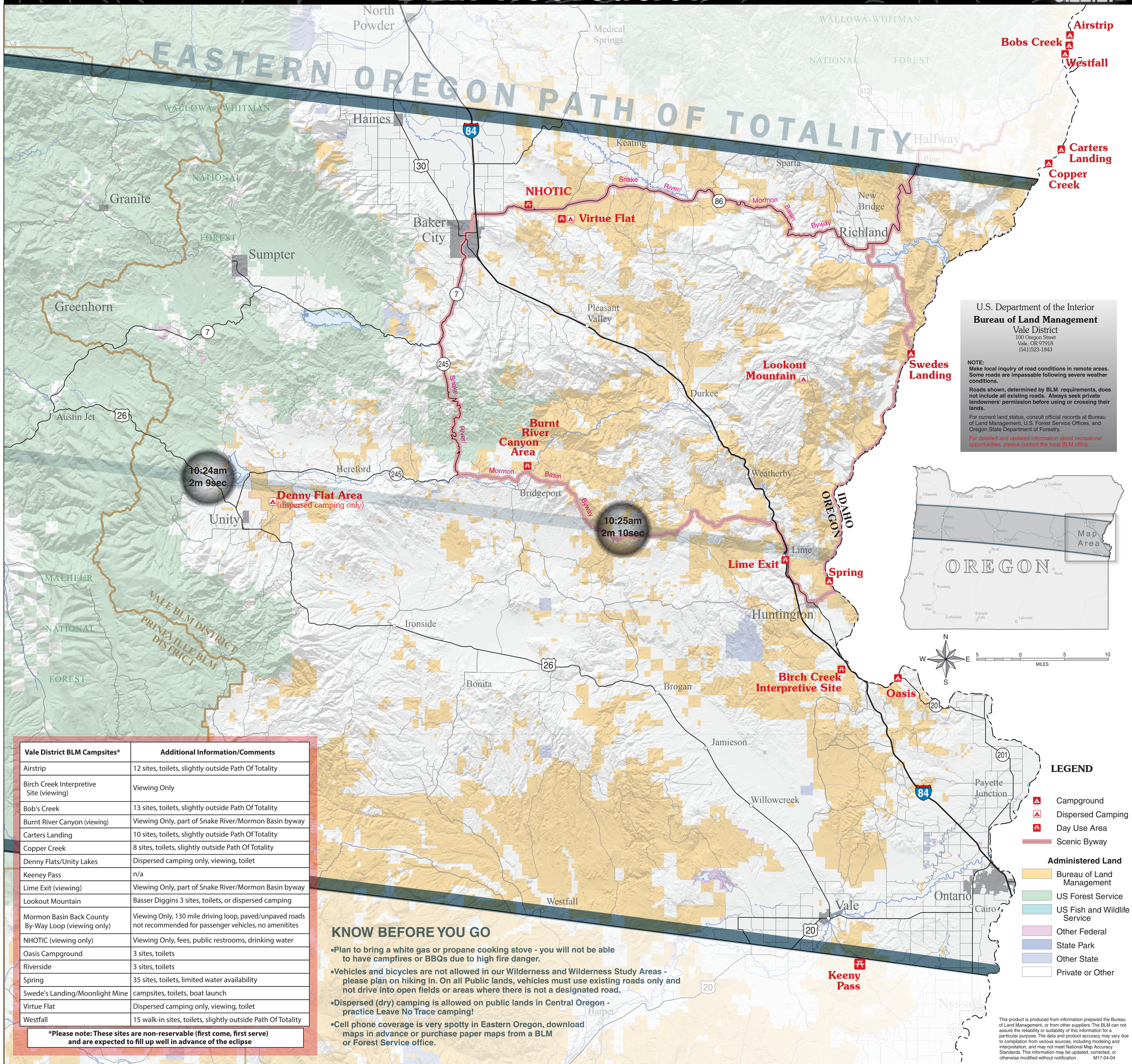


# Solar Eclipse Path Of Totality BLM Recreation



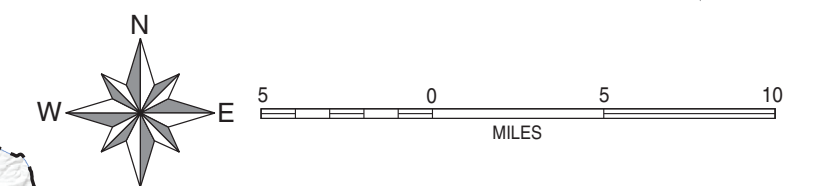
U.S. Department of the Interior  
**Bureau of Land Management**  
Vale District  
100 Oregon Street  
Vale, OR 97918  
(541)523-1843

**NOTE:**  
Make local inquiry of road conditions in remote areas. Some roads are impassable following severe weather conditions.

Roads shown, determined by BLM requirements, does not include all existing roads. Always seek private landowners' permission before using or crossing their lands.

For current land status, consult official records at Bureau of Land Management, U.S. Forest Service Offices, and Oregon State Department of Forestry.

For detailed and updated information about recreational opportunities, please contact the local BLM office.



Vale District BLM Campsites*	Additional Information/Comments
Airstrip	12 sites, toilets, slightly outside Path Of Totality
Birch Creek Interpretive Site (viewing)	Viewing Only
Bob's Creek	13 sites, toilets, slightly outside Path Of Totality
Burnt River Canyon (viewing)	Viewing Only, part of Snake River/Mormon Basin byway
Carters Landing	10 sites, toilets, slightly outside Path Of Totality
Copper Creek	8 sites, toilets, slightly outside Path Of Totality
Denny Flats/Unity Lakes	Dispersed camping only, viewing, toilet
Keeney Pass	n/a
Lime Exit (viewing)	Viewing Only, part of Snake River/Mormon Basin byway
Lookout Mountain	Basser Diggins 3 sites, toilets, or dispersed camping
Mormon Basin Back County By-Way Loop (viewing only)	Viewing Only, 130 mile driving loop, paved/unpaved roads not recommended for passenger vehicles, no amenities
NHOTIC (viewing only)	Viewing Only, fees, public restrooms, drinking water
Oasis Campground	3 sites, toilets
Riverside	3 sites, toilets
Spring	35 sites, toilets, limited water availability
Swede's Landing/Moonlight Mine	campsites, toilets, boat launch
Virtue Flat	Dispersed camping only, viewing, toilet
Westfall	15 walk-in sites, toilets, slightly outside Path Of Totality

\*Please note: These sites are non-reservable (first come, first serve) and are expected to fill up well in advance of the eclipse

### KNOW BEFORE YOU GO

- Plan to bring a white gas or propane cooking stove - you will not be able to have campfires or BBQs due to high fire danger.
- Vehicles and bicycles are not allowed in our Wilderness and Wilderness Study Areas - please plan on hiking in. On all Public lands, vehicles must use existing roads only and not drive into open fields or areas where there is not a designated road.
- Dispersed (dry) camping is allowed on public lands in Central Oregon - practice Leave No Trace camping!
- Cell phone coverage is very spotty in Eastern Oregon, download maps in advance or purchase paper maps from a BLM or Forest Service office.

**LEGEND**

- Campground
- Dispersed Camping
- Day Use Area
- Scenic Byway

**Administered Land**

- Bureau of Land Management
- US Forest Service
- US Fish and Wildlife Service
- Other Federal
- State Park
- Other State
- Private or Other

This product is produced from information prepared by the Bureau of Land Management, or from other suppliers. The BLM can not assure the reliability or suitability of this information for a particular purpose. The data and product accuracy may vary due to compilation from various sources, including modeling and interpretation, and may not meet National Map Accuracy Standards. This information may be updated, corrected, or otherwise modified without notification. M17-04-04