

STEENS MOUNTAIN CMPA

The Bureau of Land Management
Burns District



WELCOME TO STEENS MOUNTAIN COOPERATIVE MANAGEMENT & PROTECTION AREA!

The Steens Mountain Cooperative Management and Protection Area (CMPA) is approximately 500,000 acres of private and public land offering diverse scenic and recreation experiences. The CMPA encompasses deep glacier-carved gorges, stunning scenery, wilderness, wild and scenic rivers, and a way of life for all who live there. The 52-mile Steens Mountain Backcountry Byway provides access to four campgrounds, numerous trails, the Riddle Brothers Ranch National Historic District, wild horse roaming areas, and opportunities for fishing and hunting. The views from Kiger Gorge, East Rim, Big Indian Gorge, Wildhorse, and Little Blitzen Gorge overlooks are not to miss!

KNOW BEFORE YOU GO

- ✓ There are **LONG DISTANCES** between services and amenities, such as fuel, drinking water, restrooms and cell phone reception.
- ✓ Most roads in the area are **ROUGH AND PRIMITIVE**—high clearance or 4x4 vehicles along with high quality tires are recommended.
- ✓ The **REMOTE NATURE** and vast landscape of the area may leave even the most experienced traveler confused or lost. Traveling with a current map of the area is essential.

DIRECTIONS

From Burns, take State Highway 78 southeast for approximately 2 miles. Turn right onto State Highway 205 and travel south for 60 miles to Frenchglen. Just past Frenchglen, turn left onto the Steens Mountain Loop Road.

CONTACT INFO

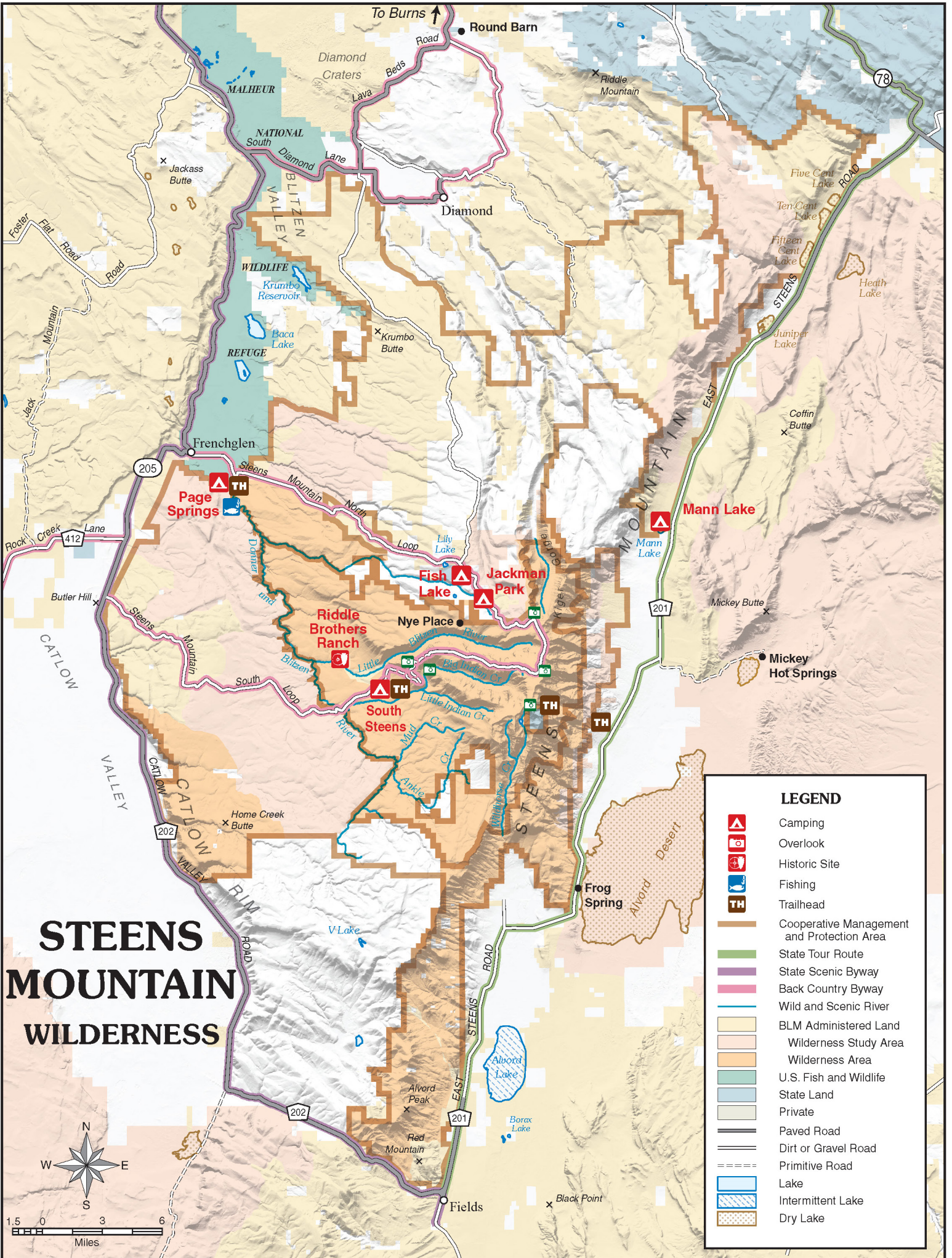


28910 Hwy 20 West
Hines, OR 97738
541-573-4400
BLM_OR_BU_Mail@blm.gov

POINT OF INTEREST

Obey road closure signs and stay on designated open routes (shown on current BLM maps)—driving off road is prohibited. Respect land owners and get permission to go onto private property.





LEGEND

	Camping
	Overlook
	Historic Site
	Fishing
	Trailhead
	Cooperative Management and Protection Area
	State Tour Route
	State Scenic Byway
	Back Country Byway
	Wild and Scenic River
	BLM Administered Land
	Wilderness Study Area
	Wilderness Area
	U.S. Fish and Wildlife
	State Land
	Private
	Paved Road
	Dirt or Gravel Road
	Primitive Road
	Lake
	Intermittent Lake
	Dry Lake