



United States Department of Agriculture

Jacqueline Buchanan
Acting Director

Forest Management, Rangeland Management &
Vegetation Ecology

National Wild Horse & Burro Advisory Board Meeting
Washington, DC ~ October 30, 2019



Forest Service

October 2019



United States Department of Agriculture

Forest Service Wild Horse & Burro Program



Forest Service

October 2019

Forest Service Presentation Outline



- Wild Horse & Burro Program Objective
- Facts & Figures
- Organization & Infrastructure
- Addressing the Challenges
- Highlighting the Successes

Wild Horse & Burro Program Objective



To maintain wild free-roaming horse and burro populations in a thriving ecological balance in the areas they inhabit on national forest system lands.

Facts & Figures



Active Wild Horse and Burro Territories



Prepared by the USDA Forest Service
 Center of Technology and Analysis
 3600 SW Jefferson Way, Corvallis, OR 97331
 © 2013



The USDA Forest Service uses the most current and best available data available. GSE data and product accuracy may vary. Many GSE products are a cooperative effort between agencies. They were prepared in a professional and accurate manner.

Facts	Figures
Number of States	9
Number of Forest Service Territories	53
Active	34
Inactive	19



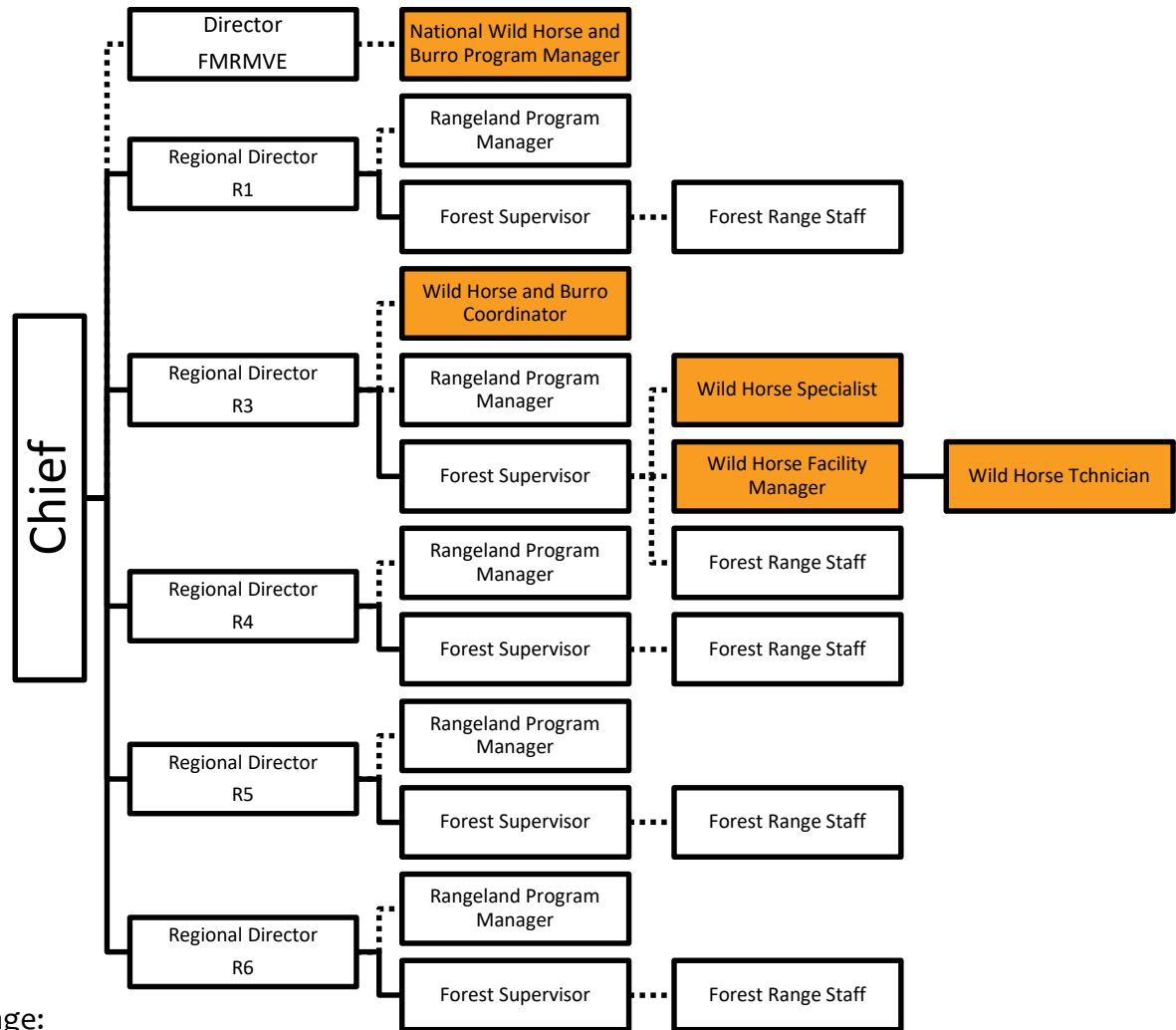
Facts & Figures Cont.



Facts	Figures
AML - Horses	~2000
Estimated Current FS Population - Horses	~6928
AML - Burros	~300
Estimated Current Population - Burros	~600



Organization



Orange:
Dedicated Wild Horse and Burro Program staff

All Others:
Wild horse and burro related activities adjunct to primary position duties



Infrastructure



R3 – Carson National Forest

Building and expanding the corral system to be utilized, where appropriate, for other forests within the region.

R5 – Modoc National Forest

Temporary Double Devil Wild Horse corral system that could be expanded or made more permanent.

All Other Units within the Forest Service

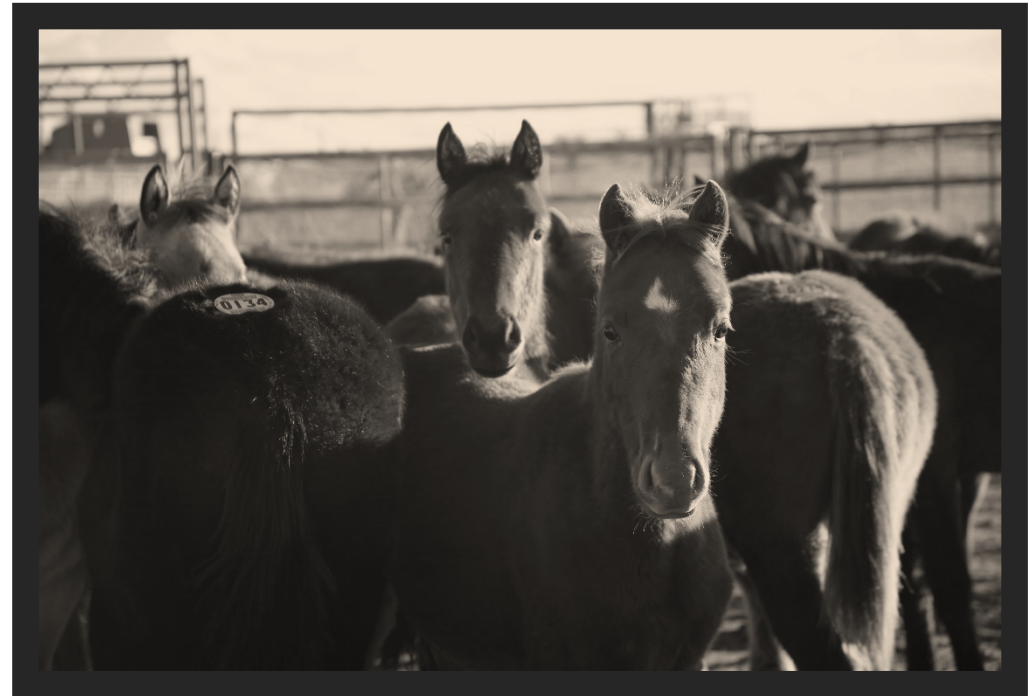
Utilization of temporary structures where needed to facilitate the gathering of wild horses. Infrastructure shared between forests and regions where appropriate and cost effective.



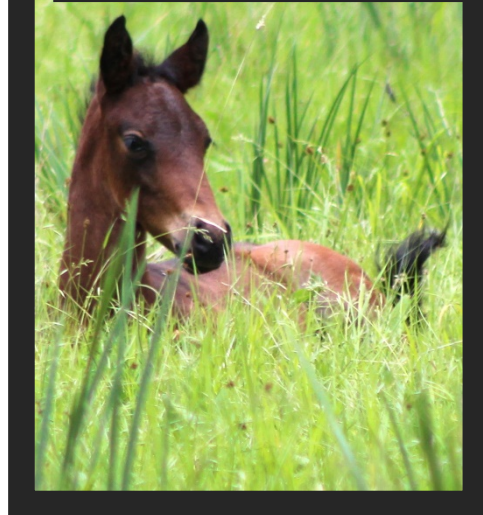
Addressing the Challenges



- NEPA
- Funding
- Litigation
- Partnerships
- Rangeland health
- Feral/domestic horses



Highlighting the Successes



- Carson National Forest
 - Collaborative Wild Horse Management
- Humboldt-Toiyabe National Forest
 - Cooperative Tribal Domestic Horse Gather
- Modoc National Forest
 - Gather and Adoptions

Questions?

