

COFFEEPOT LAKE



Recreation Opportunities



Camping



Picnicking



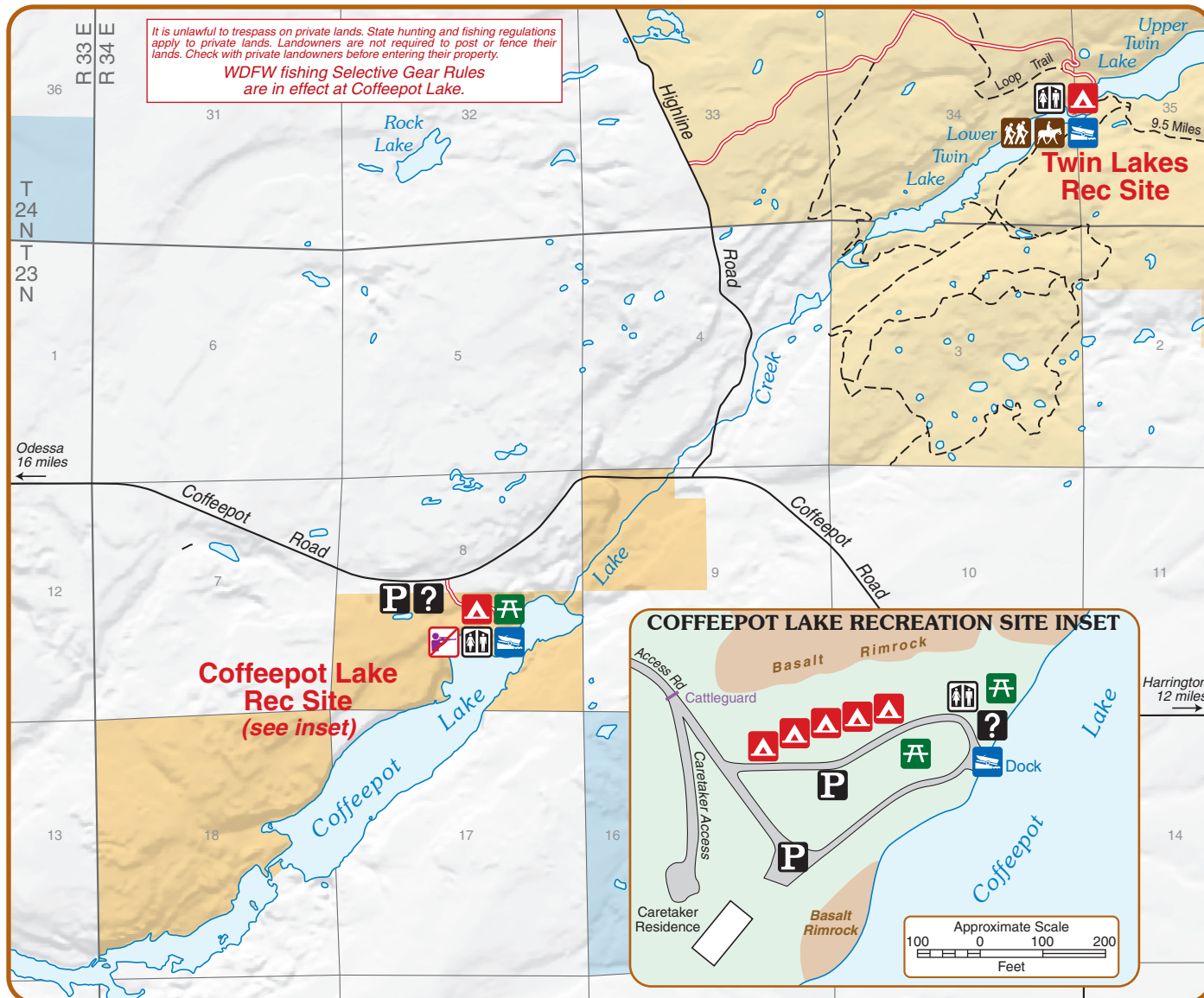
Boating



Canoeing



Fishing



It is unlawful to trespass on private lands. State hunting and fishing regulations apply to private lands. Landowners are not required to post or fence their lands. Check with private landowners before entering their property.
WDFW fishing Selective Gear Rules are in effect at Coffeepot Lake.

LEGEND		
Recreation	Transportation	Administered Land
Camping	Access Route	Bureau of Land Management
Picnic Area	Improved Road	BLM Game Reserve
Information	Other Road or Trail, Access as Designated	Washington Dept. of Natural Resources
Horseback Riding		Private or Other
Boat Ramp		
Parking		
Restroom		
No Hunting		

**U. S. Department of the Interior
Bureau of Land Management**

Spokane District Office
1103 N Fancher Road
Spokane Valley, WA 99212
(509) 536-1200