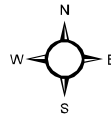


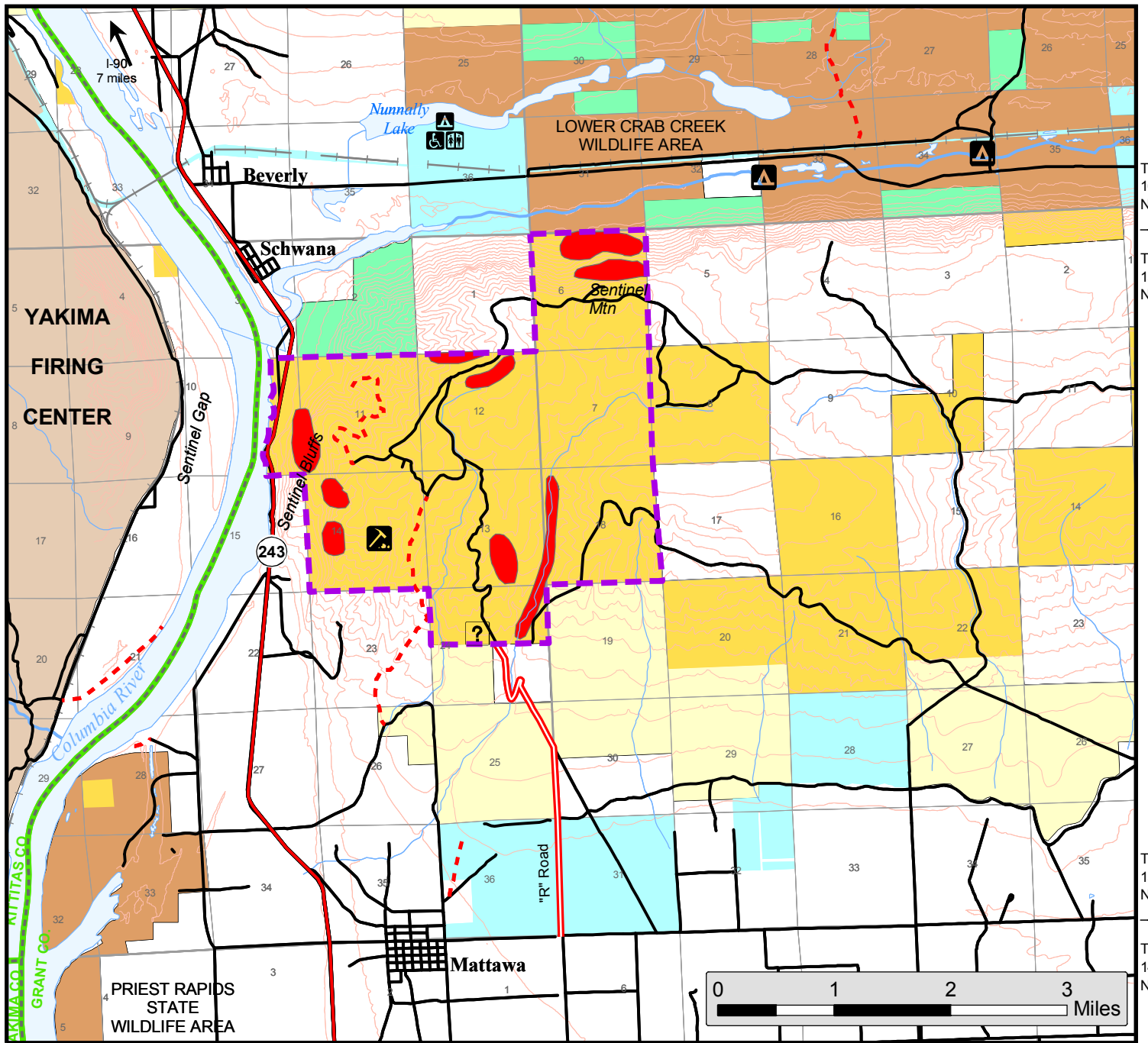
# West Saddle Mountains

**No Petrified Wood Collecting  
in Sections 7, 11, & 13**

Recreation Opportunities:



R23E | R24E



Spokane District  
1103 N. Fancher  
Spokane, WA 99212  
(509) 536-1200

mwright, 5/2006

No warranty is made by the Bureau of Land Management as to the accuracy, reliability or completeness of these data for individual or aggregate use with other data. Original data was compiled from various sources. This information may not meet National Map Accuracy Standards. This product was developed through digital means and may be updated without notification.

## LEGEND

- BLM Administered Lands
- WA Dept. of Natural Resources
- Bureau of Reclamation
- U.S. Fish and Wildlife Service
- U.S. Dept. of Defense
- WA Dept. of Fish and Wildlife
- Private Land
- County Boundary
- Off Highway Vehicles
- Open Area Boundary
- Sensitive Area (No Motor Vehicles)
- Access Route
- Highway
- Improved Road
- Trail
- Railroad
- ? Information



*It is unlawful to trespass on private lands. State hunting and fishing regulations apply to private lands. Landowners are not required to post or fence their lands. Check with private landowners before entering their property.*