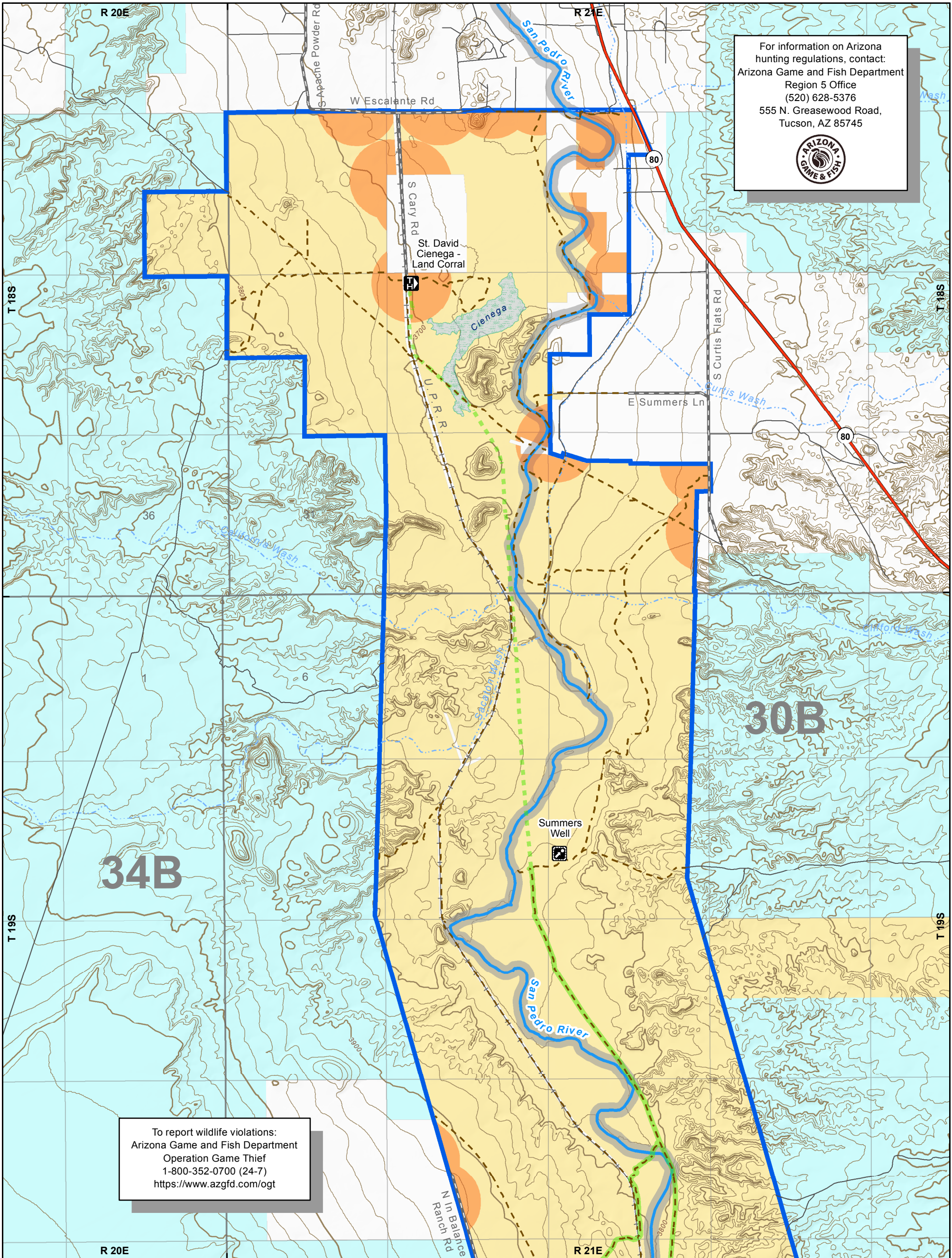
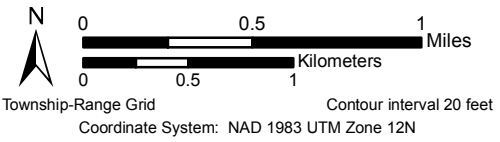


For information on Arizona hunting regulations, contact:
 Arizona Game and Fish Department
 Region 5 Office
 (520) 628-5376
 555 N. Greasewood Road,
 Tucson, AZ 85745



To report wildlife violations:
 Arizona Game and Fish Department
 Operation Game Thief
 1-800-352-0700 (24-7)
<https://www.azgfd.com/ogt>

San Pedro Riparian National Conservation Area
 Map 1 of 7: Land Corral



No warranty is made by the Bureau of Land Management as to the accuracy, reliability, or completeness of these data for individual use or aggregate use with other data.



U.S. Department of the Interior
 Bureau of Land Management
 Tucson Field Office

Map Prepared: 11/15/2019

Access

- Access Point
- Point of Interest
- Safety Zone
- Game Management Unit Boundary (AZGFD)

Transportation

- San Pedro Trail System (Existing)
- San Pedro Trail System (Planned)
- Administrative Vehicle Route
- Local Road
- County Road
- State Highway

Surface Management

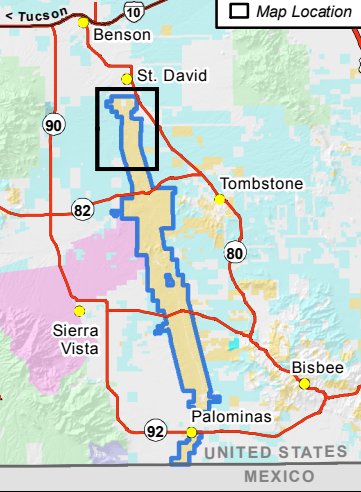
- San Pedro Riparian NCA Boundary
- BLM-Administered Land
- Private Land
- State Land

VISITOR INFORMATION

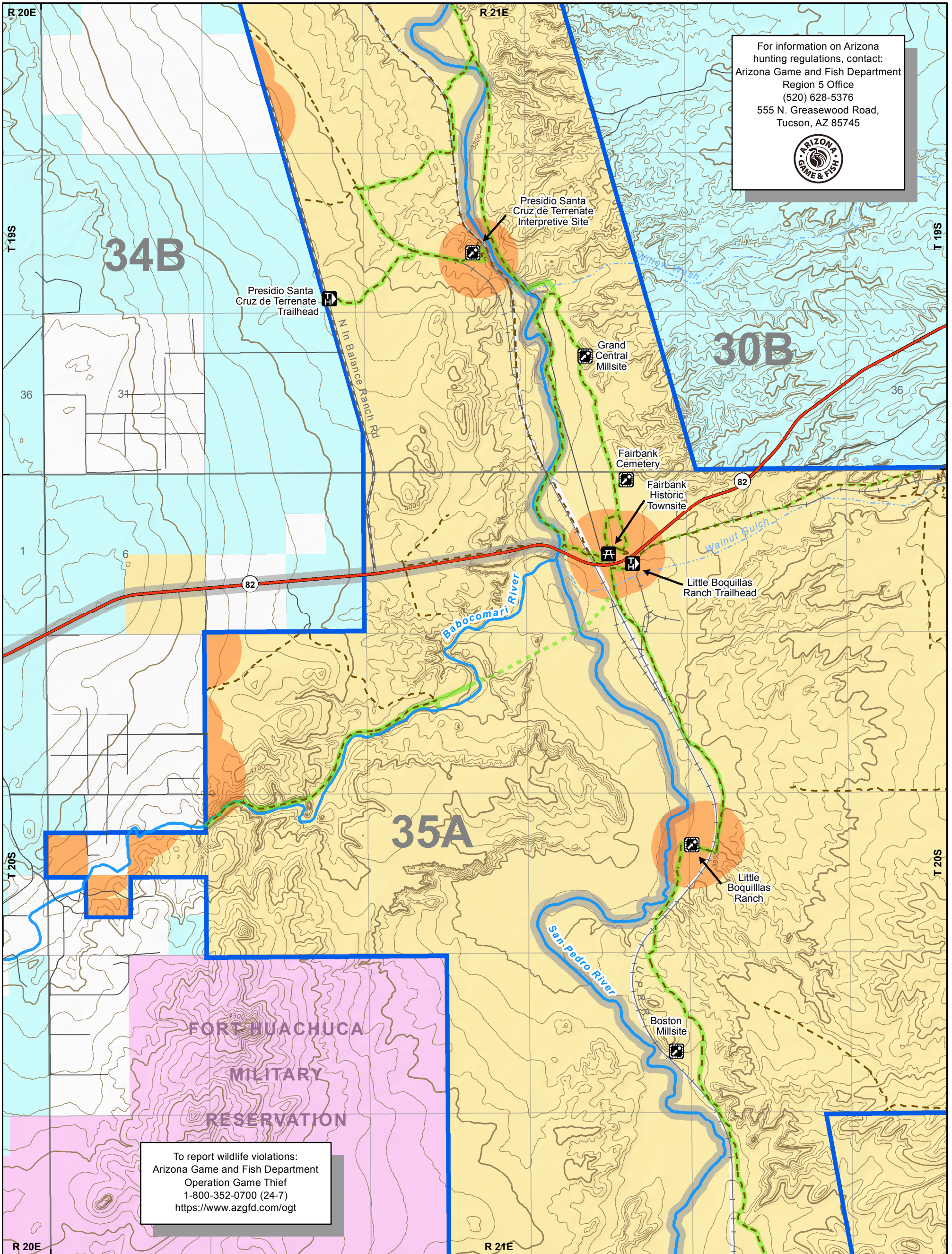
San Pedro House
 (520) 508-4445
 Sierra Vista, AZ 85650

BLM San Pedro Project Office
 (520) 439-6400
 4070 S. Avenida Saracino
 Hereford, AZ 85615

BLM Tucson Field Office
 (520) 258-7200
 3201 E Universal Way
 Tucson, AZ 85756



For information on Arizona hunting regulations, contact:
 Arizona Game and Fish Department
 Region 5 Office
 (520) 628-5376
 555 N. Greasewood Road,
 Tucson, AZ 85745



To report wildlife violations:
 Arizona Game and Fish Department
 Operation Game Thief
 1-800-352-0700 (24-7)
<https://www.azgfd.com/ogt>

San Pedro Riparian National Conservation Area
 Map 2 of 7: Terrenate-Fairbank-Boquillas



No warranty is made by the Bureau of Land Management as to the accuracy, reliability, or completeness of these data for individual use or aggregate use with other data.



U.S. Department of the Interior
 Bureau of Land Management
 Tucson Field Office

Map Prepared: 11/15/2019

- Access**
- Access Point
 - Day Use Site
 - Point of Interest
 - Safety Zone
 - Game Management Unit Boundary (AZGFD)

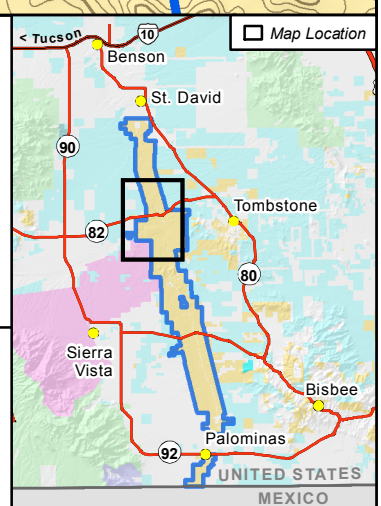
- Transportation**
- San Pedro Trail System (Existing)
 - San Pedro Trail System (Planned)
 - Administrative Vehicle Route
 - Local Road
 - County Road
 - State Highway

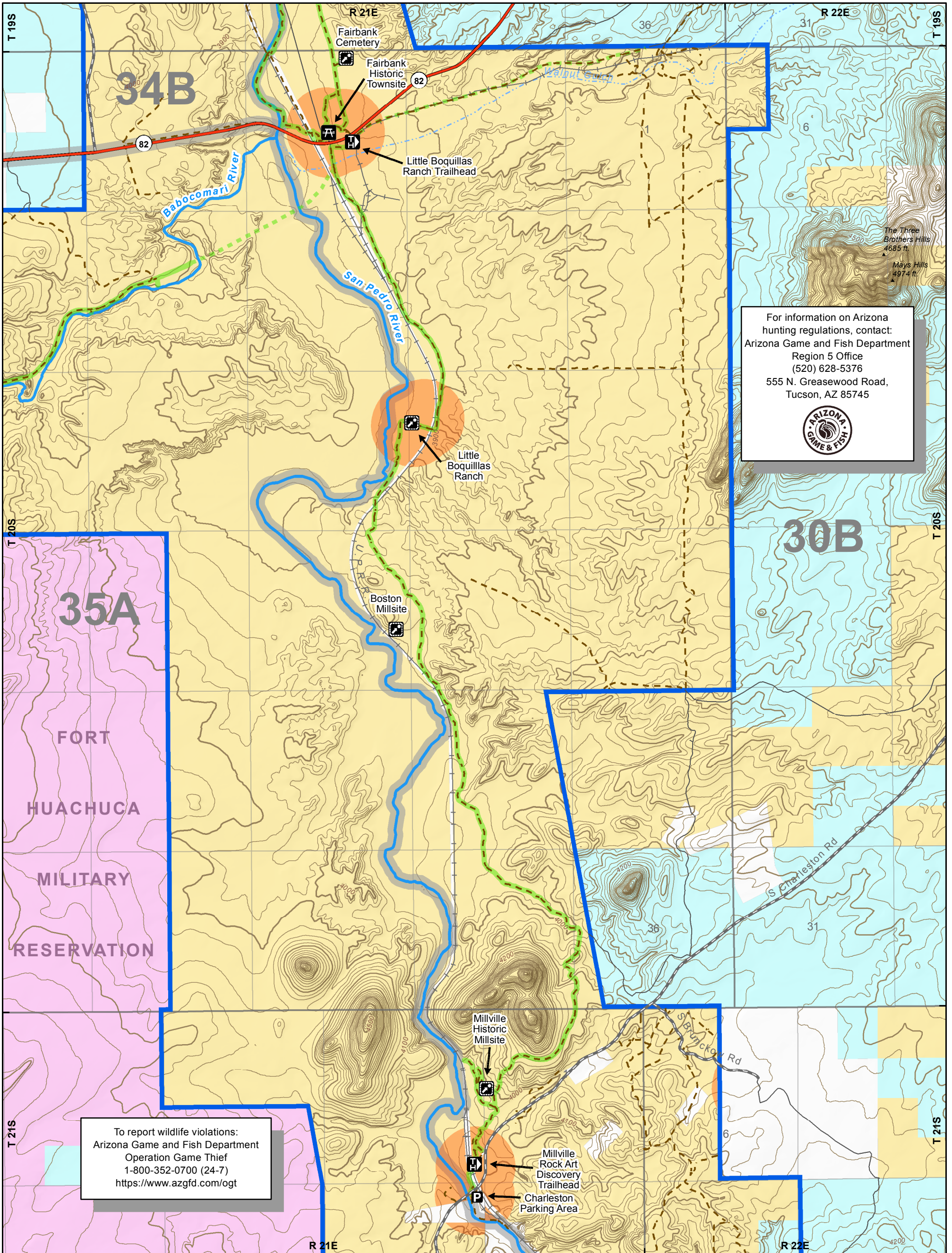
- Surface Management**
- San Pedro Riparian NCA Boundary
 - BLM-Administered Land
 - Military Reservation
 - Private Land
 - State Land

San Pedro House
 (520) 508-4445
 Sierra Vista, AZ 85650

VISITOR INFORMATION
 BLM San Pedro Project Office
 (520) 439-6400
 4070 S. Avenida Saracino
 Hereford, AZ 85615

BLM Tucson Field Office
 (520) 258-7200
 3201 E Universal Way
 Tucson, AZ 85756



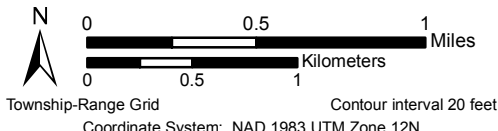


For information on Arizona hunting regulations, contact:
 Arizona Game and Fish Department
 Region 5 Office
 (520) 628-5376
 555 N. Greasewood Road,
 Tucson, AZ 85745



To report wildlife violations:
 Arizona Game and Fish Department
 Operation Game Thief
 1-800-352-0700 (24-7)
<https://www.azgfd.com/ogt>

San Pedro Riparian National Conservation Area
 Map 3 of 7: Fairbank-Boquillas-Charleston



No warranty is made by the Bureau of Land Management as to the accuracy, reliability, or completeness of these data for individual use or aggregate use with other data.



U.S. Department of the Interior
 Bureau of Land Management
 Tucson Field Office

Map Prepared: 11/15/2019

Access

- Access Point
- Day Use Site
- Parking Area
- Point of Interest
- Safety Zone
- Game Management Unit Boundary (AZGFD)

Transportation

- San Pedro Trail System (Existing)
- San Pedro Trail System (Planned)
- Administrative Vehicle Route
- Local Road
- County Road
- State Highway

Surface Management

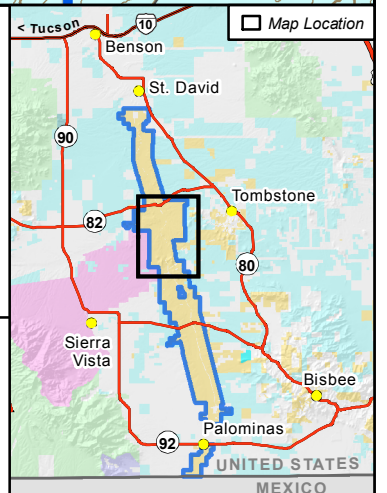
- San Pedro Riparian NCA Boundary
- BLM-Administered Land
- Military Reservation
- Private Land
- State Land

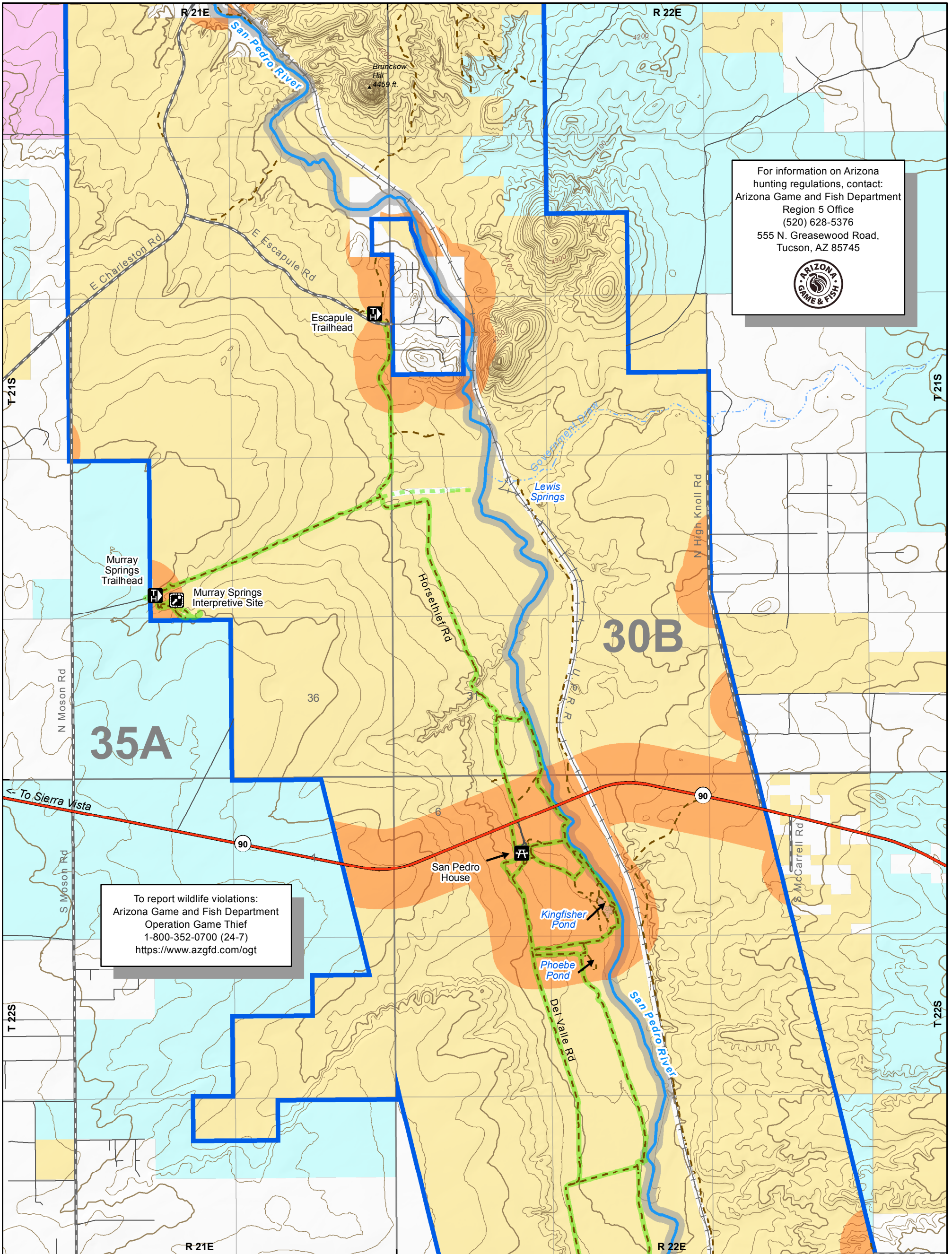
VISITOR INFORMATION

San Pedro House
 (520) 508-4445
 Sierra Vista, AZ 85650

BLM San Pedro Project Office
 (520) 439-6400
 4070 S. Avenida Saracino
 Hereford, AZ 85615

BLM Tucson Field Office
 (520) 258-7200
 3201 E Universal Way
 Tucson, AZ 85756



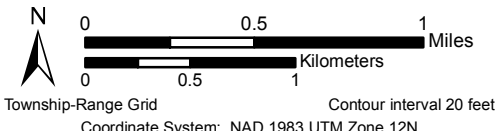


For information on Arizona hunting regulations, contact:
 Arizona Game and Fish Department
 Region 5 Office
 (520) 628-5376
 555 N. Greasewood Road,
 Tucson, AZ 85745



To report wildlife violations:
 Arizona Game and Fish Department
 Operation Game Thief
 1-800-352-0700 (24-7)
<https://www.azgfd.com/ogt>

San Pedro Riparian National Conservation Area
 Map 4 of 7: Escapule-San Pedro House



No warranty is made by the Bureau of Land Management as to the accuracy, reliability, or completeness of these data for individual use or aggregate use with other data.



U.S. Department of the Interior
 Bureau of Land Management
 Tucson Field Office

Map Prepared: 11/15/2019

Access

- Access Point
- Day Use Site
- Point of Interest
- Safety Zone
- Game Management Unit Boundary (AZGFD)

Transportation

- San Pedro Trail System (Existing)
- San Pedro Trail System (Planned)
- Administrative Vehicle Route
- Local Road
- County Road
- State Highway

Surface Management

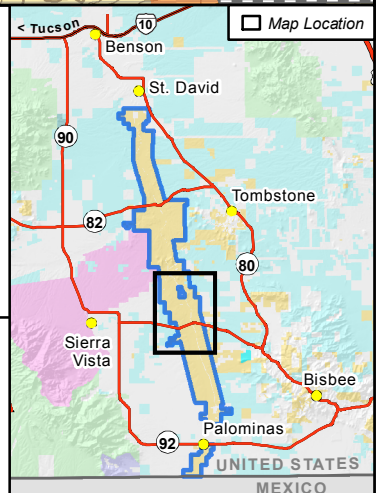
- San Pedro Riparian NCA Boundary
- BLM-Administered Land
- Military Reservation
- Private Land
- State Land

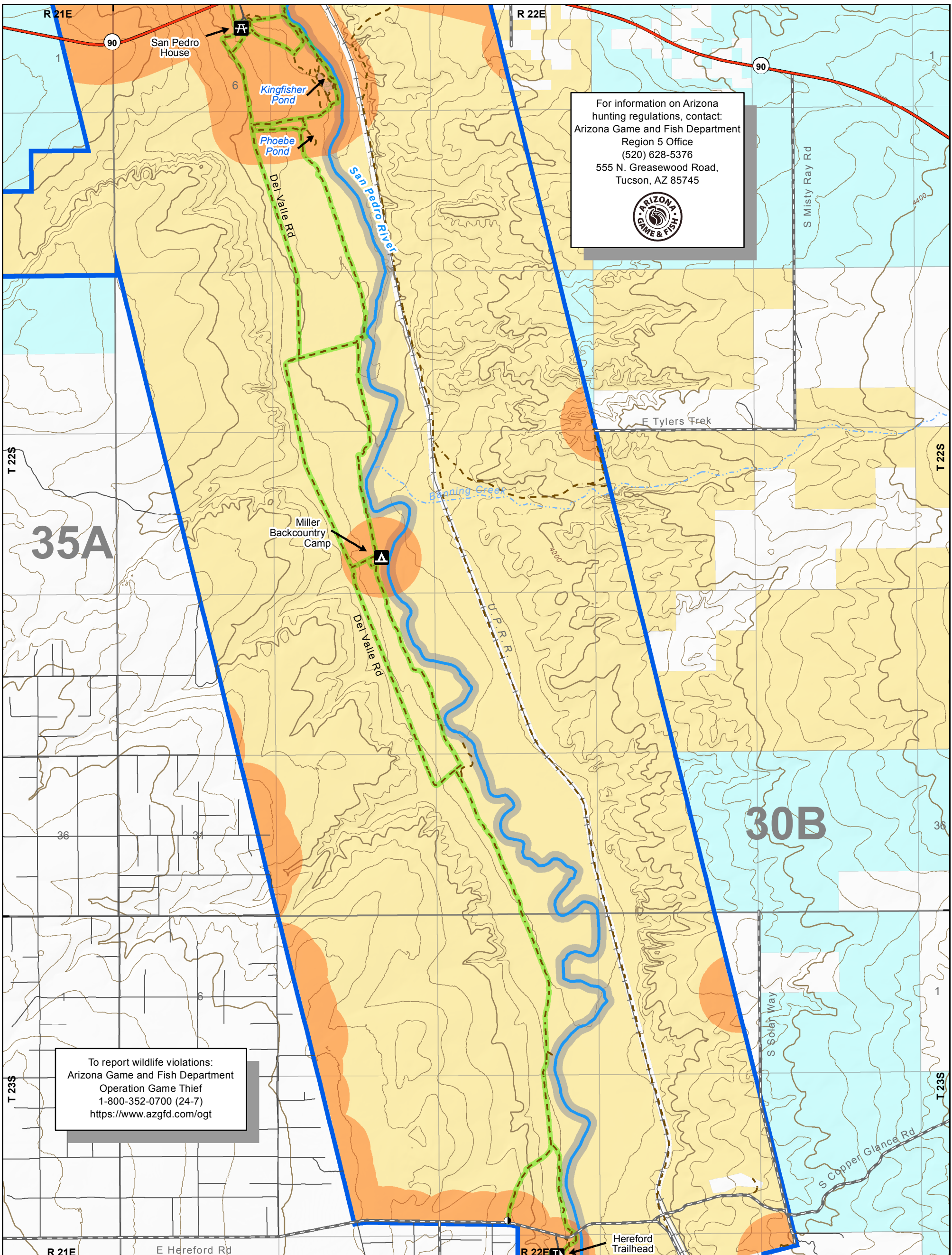
VISITOR INFORMATION

San Pedro House
 (520) 508-4445
 Sierra Vista, AZ 85650


BLM San Pedro Project Office
 (520) 439-6400
 4070 S. Avenida Saracino
 Hereford, AZ 85615

BLM Tucson Field Office
 (520) 258-7200
 3201 E Universal Way
 Tucson, AZ 85756



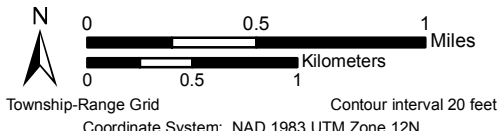


For information on Arizona hunting regulations, contact:
 Arizona Game and Fish Department
 Region 5 Office
 (520) 628-5376
 555 N. Greasewood Road,
 Tucson, AZ 85745



To report wildlife violations:
 Arizona Game and Fish Department
 Operation Game Thief
 1-800-352-0700 (24-7)
<https://www.azgfd.com/ogt>

San Pedro Riparian National Conservation Area
 Map 5 of 7: San Pedro House-Hereford



No warranty is made by the Bureau of Land Management as to the accuracy, reliability, or completeness of these data for individual use or aggregate use with other data.



U.S. Department of the Interior
 Bureau of Land Management
 Tucson Field Office

Map Prepared: 11/15/2019

- Access**
- Access Point
 - Backcountry Campsite
 - Day Use Site
 - Trail Access
 - Safety Zone
 - Game Management Unit Boundary (AZGFD)

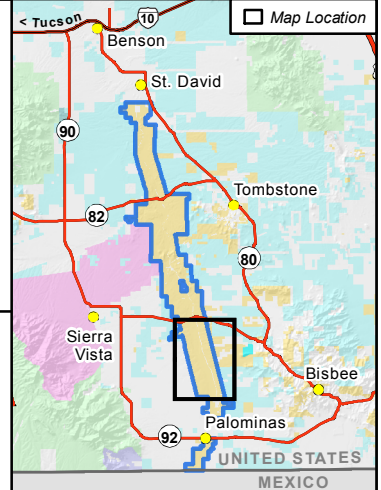
- Transportation**
- San Pedro Trail System (Existing)
 - Administrative Vehicle Route
 - Local Road
 - County Road
 - State Highway

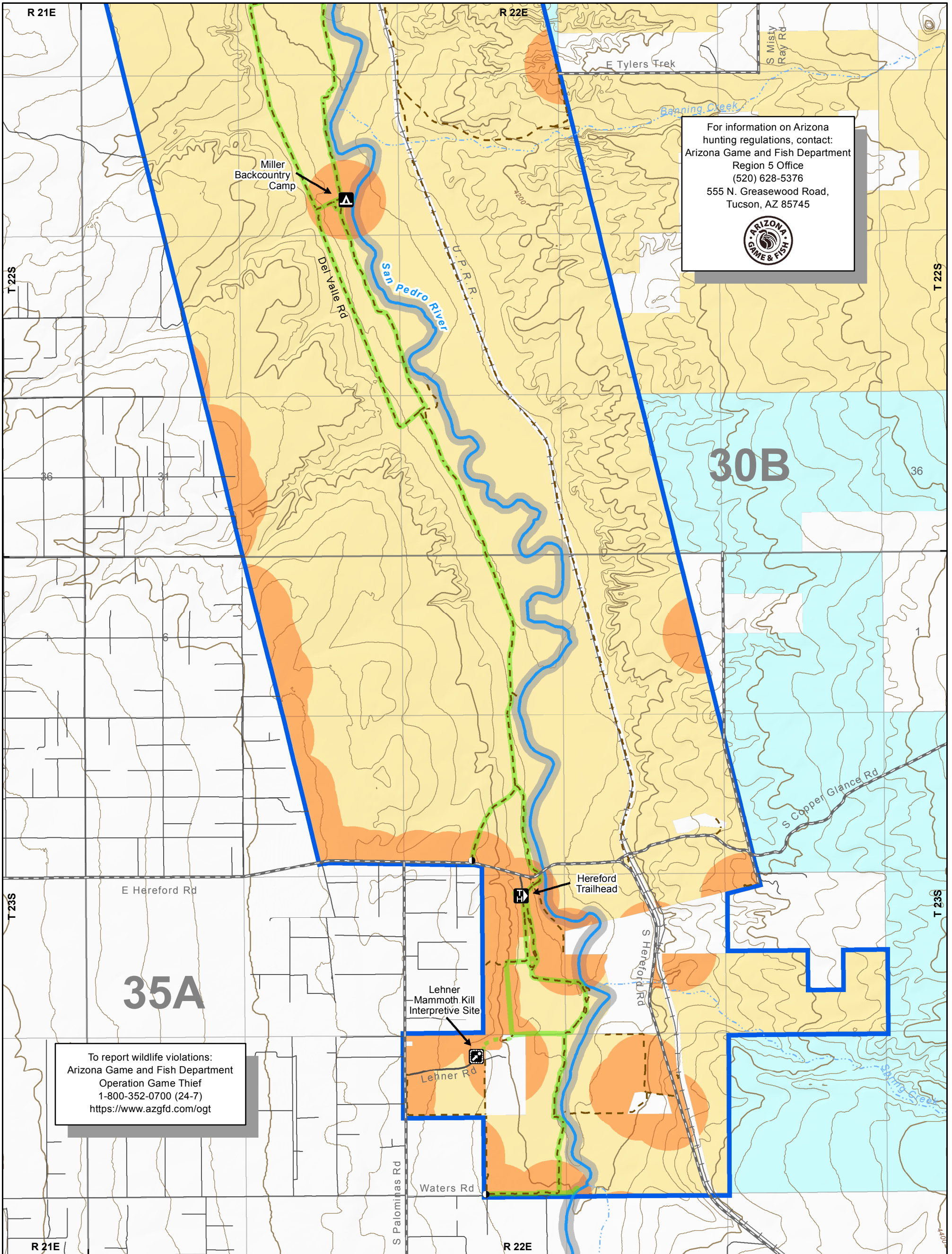
- Surface Management**
- San Pedro Riparian NCA Boundary
 - BLM-Administered Land
 - Private Land
 - State Land

San Pedro House
 (520) 508-4445
 Sierra Vista, AZ
 85650


VISITOR INFORMATION
 BLM San Pedro Project Office
 (520) 439-6400
 4070 S. Avenida Saracino
 Hereford, AZ 85615

BLM Tucson Field Office
 (520) 258-7200
 3201 E Universal Way
 Tucson, AZ 85756



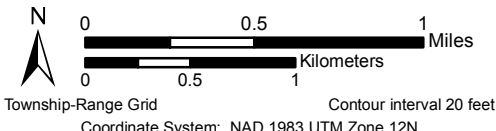


For information on Arizona hunting regulations, contact:
 Arizona Game and Fish Department
 Region 5 Office
 (520) 628-5376
 555 N. Greasewood Road,
 Tucson, AZ 85745



To report wildlife violations:
 Arizona Game and Fish Department
 Operation Game Thief
 1-800-352-0700 (24-7)
<https://www.azgfd.com/ogt>

San Pedro Riparian National Conservation Area
 Map 6 of 7: Hereford









No warranty is made by the Bureau of Land Management as to the accuracy, reliability, or completeness of these data for individual use or aggregate use with other data.








U.S. Department of the Interior
 Bureau of Land Management
 Tucson Field Office

Map Prepared: 11/15/2019

Access

-  Access Point
-  Backcountry Campsite
-  Point of Interest
-  Trail Access
-  Safety Zone
-  Game Management Unit Boundary (AZGFD)

Transportation

-  San Pedro Trail System (Existing)
-  San Pedro Trail System (Planned)
-  Administrative Vehicle Route
-  Local Road
-  County Road

Surface Management

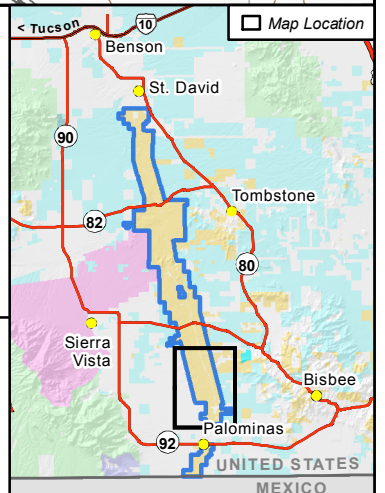
-  San Pedro Riparian NCA Boundary
-  BLM-Administered Land
-  Private Land
-  State Land

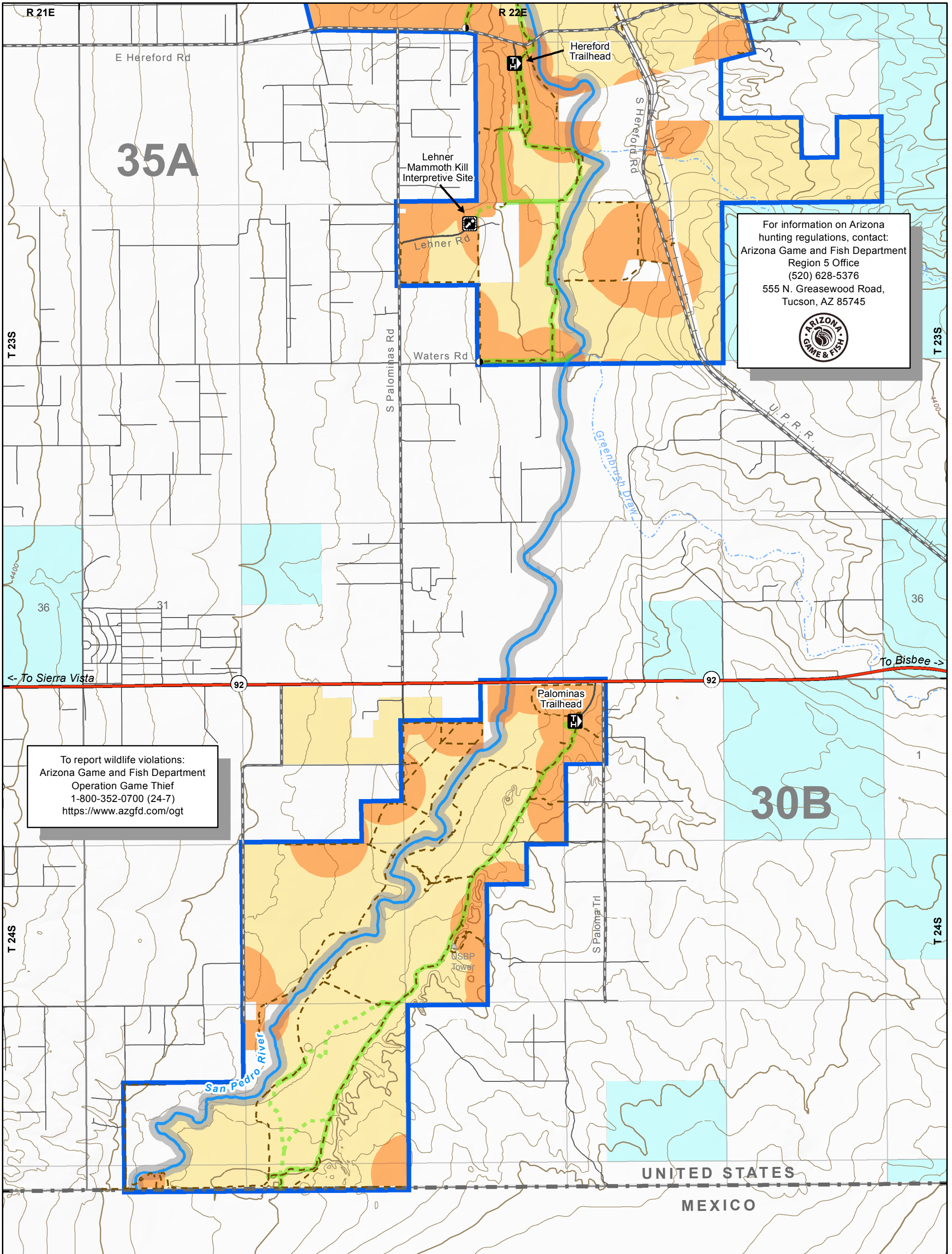
VISITOR INFORMATION

San Pedro House
 (520) 508-4445
 Sierra Vista, AZ
 85650


BLM San Pedro Project Office
 (520) 439-6400
 4070 S. Avenida Saracino
 Hereford, AZ 85615

BLM Tucson Field Office
 (520) 258-7200
 3201 E Universal Way
 Tucson, AZ 85756





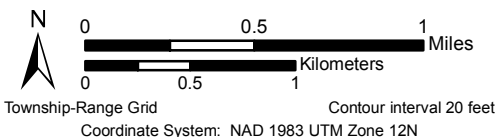
For information on Arizona hunting regulations, contact:
 Arizona Game and Fish Department
 Region 5 Office
 (520) 628-5376
 555 N. Greasewood Road,
 Tucson, AZ 85745



To report wildlife violations:
 Arizona Game and Fish Department
 Operation Game Thief
 1-800-352-0700 (24-7)
<https://www.azgfd.com/ogt>

San Pedro Riparian National Conservation Area

Map 7 of 7: Palominas



No warranty is made by the Bureau of Land Management as to the accuracy, reliability, or completeness of these data for individual use or aggregate use with other data.



U.S. Department of the Interior
 Bureau of Land Management
 Tucson Field Office

Map Prepared: 11/15/2019

Access

- Access Point
- Point of Interest
- Trail Access
- Safety Zone
- Game Management Unit Boundary (AZGFD)

Transportation

- San Pedro Trail System (Existing)
- San Pedro Trail System (Planned)
- Administrative Vehicle Route
- Local Road
- County Road
- State Highway

Surface Management

- San Pedro Riparian NCA Boundary
- BLM-Administered Land
- Private Land
- State Land
- U.S.-Mexico Border

VISITOR INFORMATION

San Pedro House
 (520) 508-4445
 Sierra Vista, AZ
 85650

BLM San Pedro Project Office
 (520) 439-6400
 4070 S. Avenida Saracino
 Hereford, AZ 85615

BLM Tucson Field Office
 (520) 258-7200
 3201 E Universal Way
 Tucson, AZ 85756

