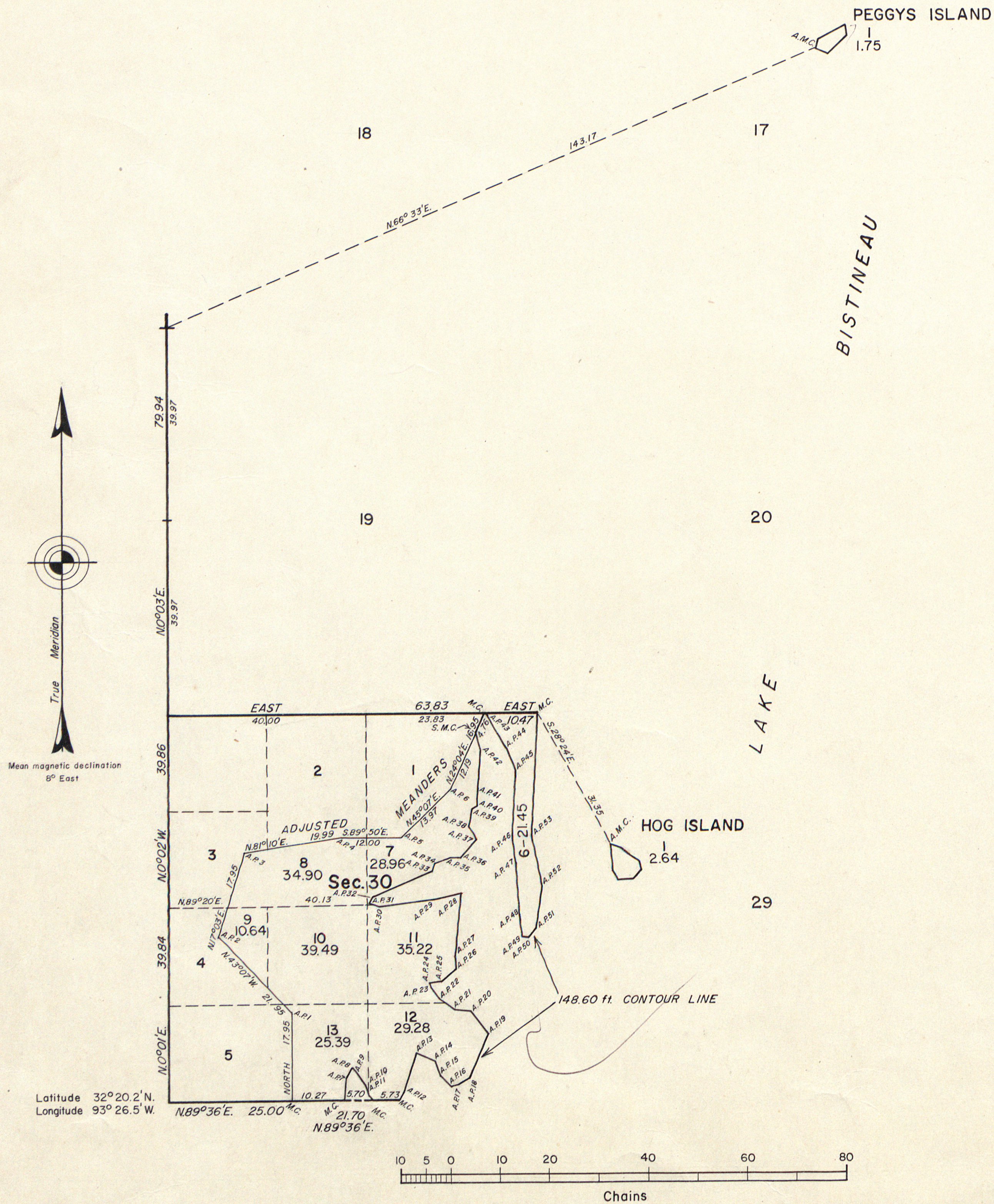


TOWNSHIP 16 NORTH, RANGE 10 WEST, LOUISIANA MERIDIAN, LOUISIANA

DEPENDENT RESURVEY, EXTENSION SURVEY AND SURVEY OF TWO ISLANDS, SECTIONS 17, 29 AND 30



This plat represents a retracement and reestablishment of a portion of the west boundary and subdivisional lines, designed to restore the corners in their true original positions according to the best available evidence, and, an extension survey in section 30, the survey of Peggys Island, section 17, and Hog Island, section 29.

For areas not shown, see the plat approved December 8, 1842.

The position of the original record meander courses of Lake Bistineau in section 30, is shown by an irregular line. This line, as thus originally reported, is grossly in error, and the portion thereof fronting on the lands erroneously omitted from the original survey, has been established as a fixed boundary, with the directions and lengths of the courses adjusted to the computed positions of the points called for on the section boundaries.

The mean high water elevation of the former Lake Bistineau, as that lake existed in 1812 when Louisiana was admitted into the Union, and, in 1838, when the township was subdivided, was found to follow the contour 148.60 feet above mean sea level. That contour has been established as the boundary of the public land included in the present survey.

Survey executed by Leonard W. Murphy, Cadastral Surveyor, beginning October 24, 1967, and completed November 24, 1967, pursuant to Special Instructions for Group No. 49, Louisiana, dated September 18, 1967.

UNITED STATES DEPARTMENT OF THE INTERIOR
BUREAU OF LAND MANAGEMENT
Washington, D. C. January 15, 1969

This plat is strictly conformable to the approved field notes, and the survey, having been correctly executed in accordance with the requirements of law and the regulations of this Bureau, is hereby accepted.

For the Director

R. E. Brown

Chief, Division of Engineering

Area Resurveyed: 248.81 Acres

Area Surveyed: 229.72 Acres