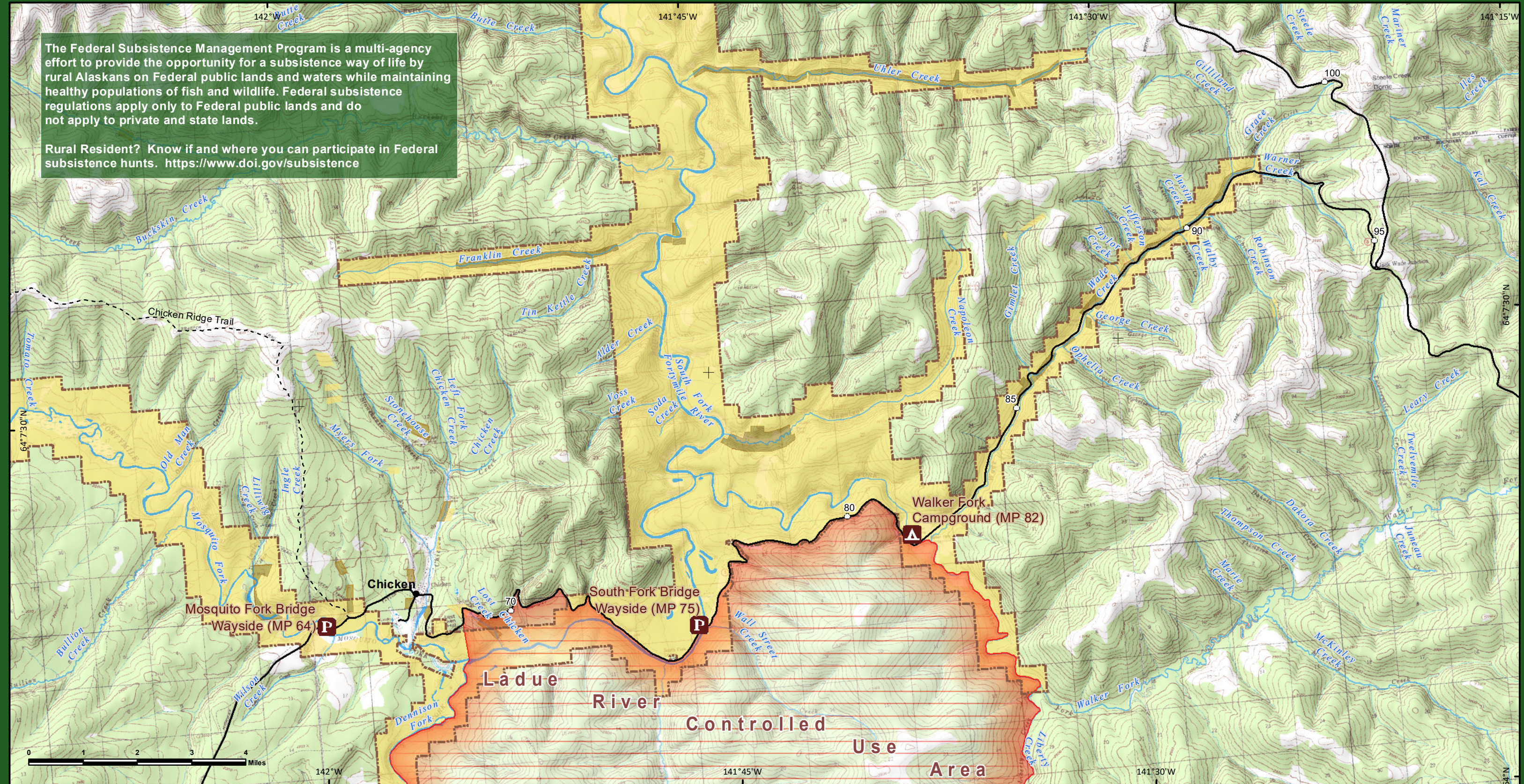




The Federal Subsistence Management Program is a multi-agency effort to provide the opportunity for a subsistence way of life by rural Alaskans on Federal public lands and waters while maintaining healthy populations of fish and wildlife. Federal subsistence regulations apply only to Federal public lands and do not apply to private and state lands.

Rural Resident? Know if and where you can participate in Federal subsistence hunts. <https://www.doi.gov/subsistence>



It is YOUR Responsibility to Know Where You Are

- Respect private property
- Get permission before you hunt
- Know Federal Subsistence and State of Alaska hunting regulations
- If hunting on mining claims: notify miners of plans to hunt in the area. Miners are obligated to restrict access to areas of claims that could present safety risks.

- - - Trail
- Highway (with mileposts)
- ADF&G: Ladue River Controlled Use Area- Closed to motorized vehicles for hunting, transport of hunters, gear, and/or parts of game Aug 24- Sept. 20

- Open to Federal Subsistence Hunt**
- BLM- Fortymile Wild and Scenic River Corridor (WSR): Travel on existing trails limited to OHVs up to 1,500 pounds curb weight and 64 inches wide May 1 - Oct. 14. Cross-country OHV travel in the WSR limited to snowmobiles up to 1,000 pounds curb weight and 50 inches wide Oct 15 - April 30.
- BLM- Mining Claim: Notify miners of plans to hunt in the area.

Disclaimer: No warranty is made by the Bureau of Land Management as to the accuracy, reliability, or completeness of these data for individual or aggregate use with other data. Original data were compiled from various sources. This information may not meet National Map Accuracy Standards. This product was developed through digital means and may be updated without notification. The information displayed on this map should be used for graphic display only. For official land status information, refer to Cadastral Survey plats, Master Title Plats, and land status case-files.

<https://www.blm.gov/office/eastern-interior-field-office>
Bureau of Land Management
Eastern Interior Field Office
222 University Ave.
Fairbanks, AK 99709
Phone: 907-474-2200

