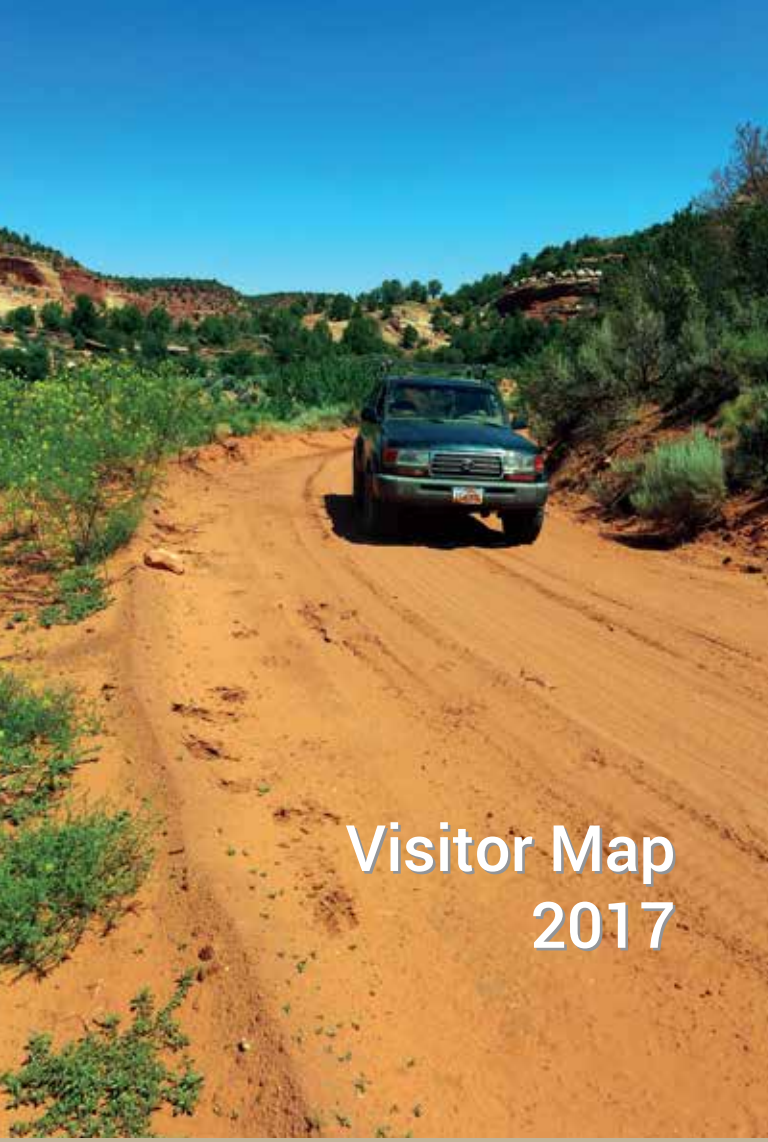


Kanab Field Office



Visitor Map
2017

Emergency and Office Contact Info

- Emergency Response: 9-1-1**
- Non-Emergency / Dispatch Center Phone Numbers:**
- Kane County Sheriff**
Kanab, UT - 435-644-2349
 - Garfield County Sheriff**
Panguitch, UT - 435-676-2678
 - Coconino County Sheriff**
Flagstaff, AZ - 800-338-7888
 - Mohave County Sheriff**
Kingman, AZ - 800-522-4312
 - Glen Canyon National Recreation Area (NPS)**
Page, AZ - 800-582-4351
- Office Phone Numbers:**
- Kanab Field Office (BLM)**
Kanab, UT - 435-644-1200
 - Grand Staircase-Escalante National Monument (BLM)**
Kanab, UT - 435-644-1200
Escalante, UT - 435-826-5600
 - Arizona Strip Field Office (BLM)**
St. George, UT - 435-688-3200

Map Projection: Transverse Mercator
Map Coordinate System: UTM
Map Datum: North American Datum of 1983 (NAD 83)
Map Grid: Latitude/Longitude, Degrees, Minutes, Seconds
Non-Kanab BLM route data sources: Dixie National Forest, State of Utah, and Utah BLM

No warranty is made by the BLM for use of the data for purposes not intended by the BLM. This product may not meet BLM standards for accuracy and content. Different data sources and input scales may cause some misalignment of data layers.

Kanab Field Office Routes

- Open Routes - Open to All Vehicles
- Limited Routes

Grand Staircase-Escalante National Monument Routes

- Open Routes - Open to Street Legal Vehicles Only
- Open ATV Routes - Open to All Vehicles

Major Routes **Non-Kanab BLM Routes**

Interstate **Field Office Boundary**

Federal Highway **County Boundary**

State Highway

BLM Sites **USFS Sites** **Hospital**

State Sites **NPS Sites** **Community Pit**

Public Land (BLM)

- State Land
- State Park, Wildlife Management Areas
- National Parks & Monuments
- National Forest
- National Forest Wilderness
- Bankhead Jones Land Use Lands
- Private Land

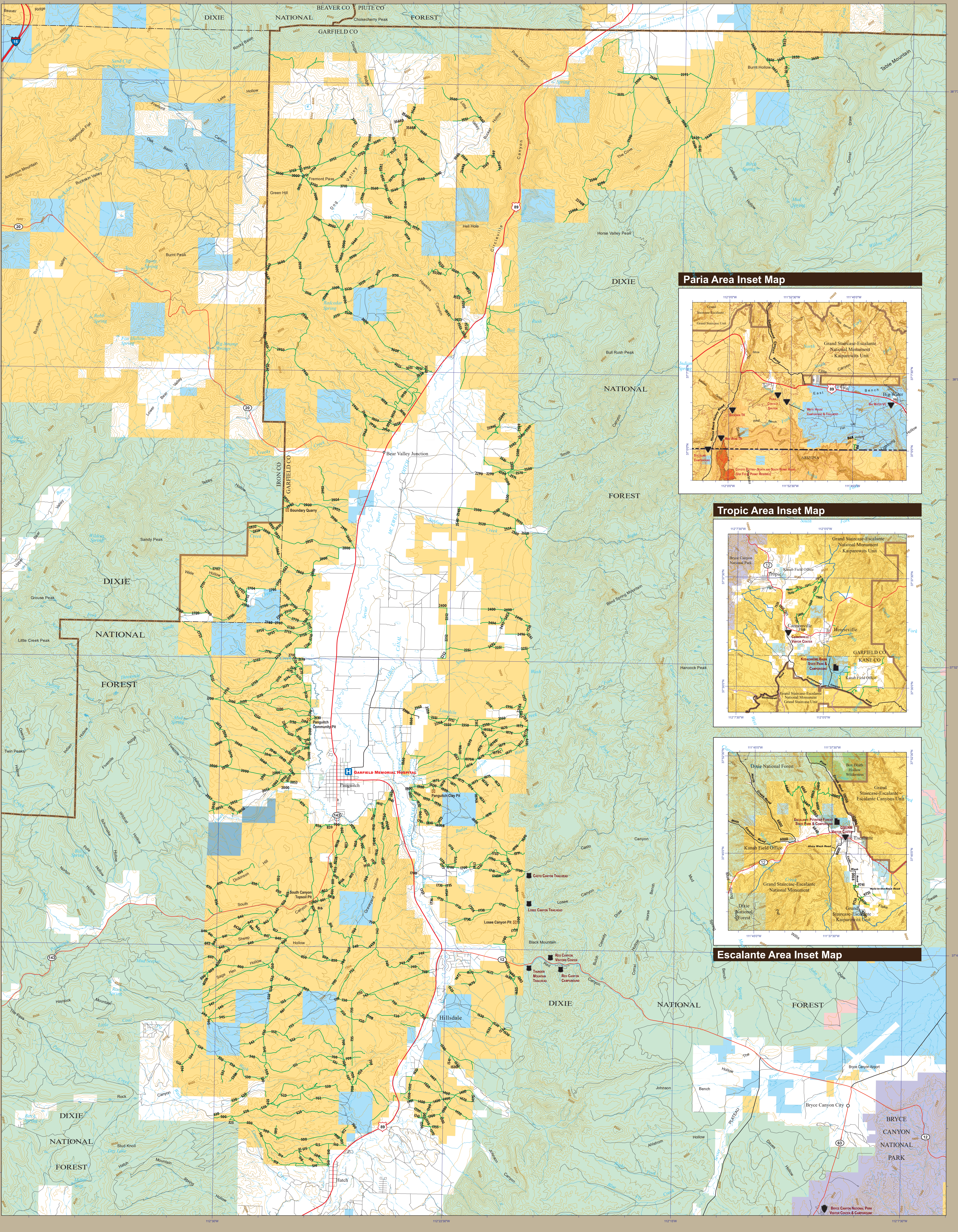
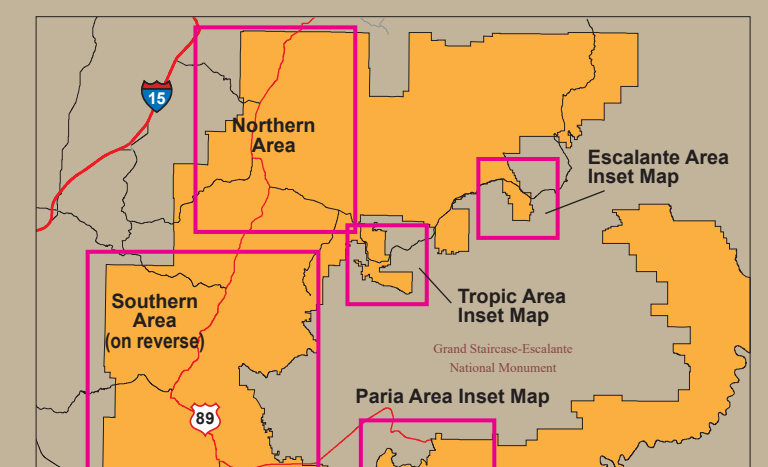
0 1 2 3 4
Map Scale 1:67,575 Scale in Miles

Disclaimer

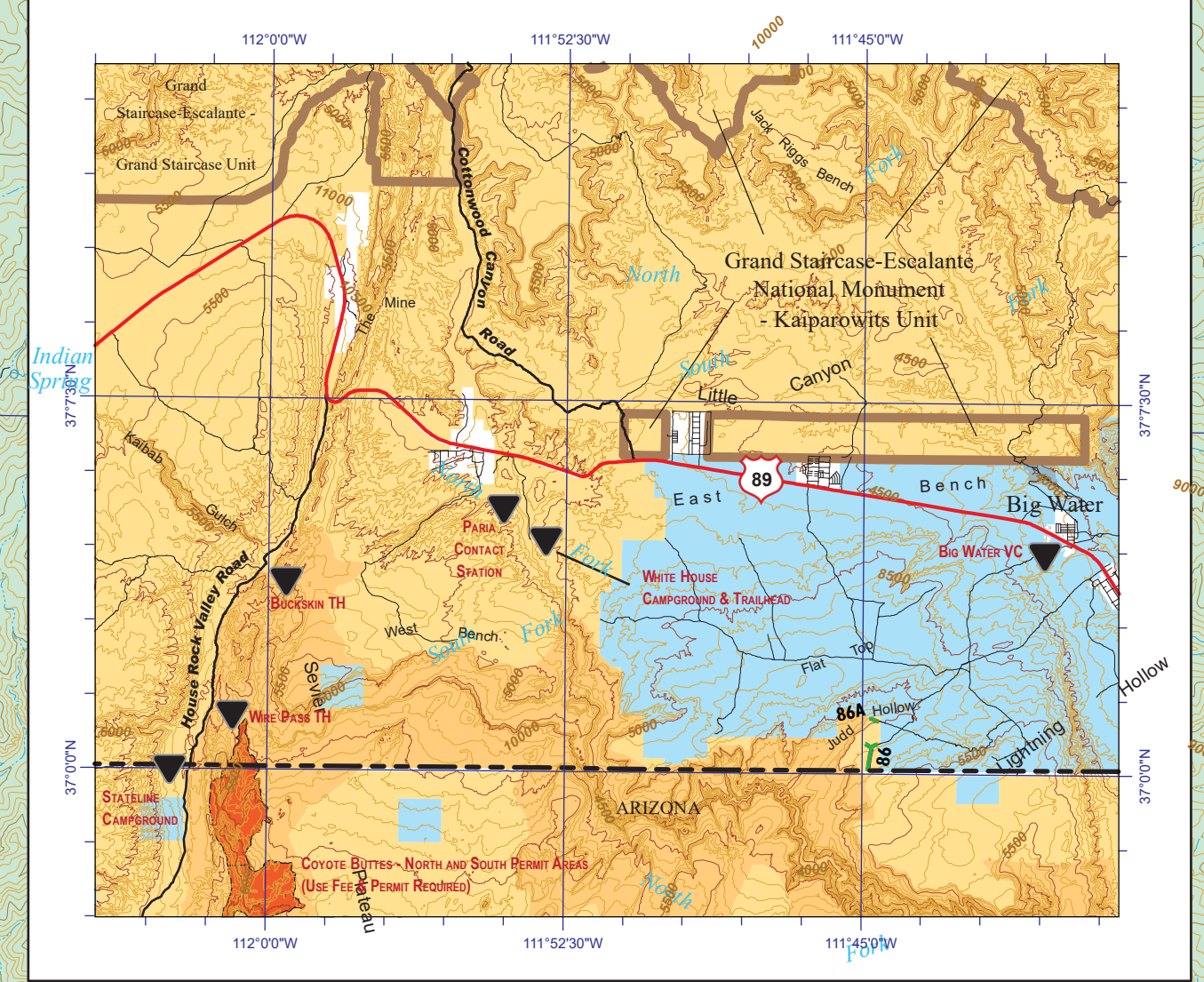
CAUTION !!!
Roads and routes within the Kanab Field Office are mostly dirt, clay, sand, gravel or rocky. These roads and routes are subject to flooding and may be impassable when wet. High clearance four-wheel drive vehicles are recommended for most routes while others may require an All Terrain Vehicle (ATV). Conditions change, so please inquire at the Kanab Field Office for current driving conditions. In Kane County, route signs with BLM route numbers are located on BLM land, not necessarily at route intersections. Not all BLM routes on this map have route number signs on the ground. This group of maps does not show the entire Kanab Field Office, just the portions containing the BLM motorized routes.

Routes shown as Non-Kanab BLM are for reference only and may not be open for travel. These routes have not been field verified for accuracy or completeness. Please contact the appropriate land management agency or land owner for conditions and accessibility.

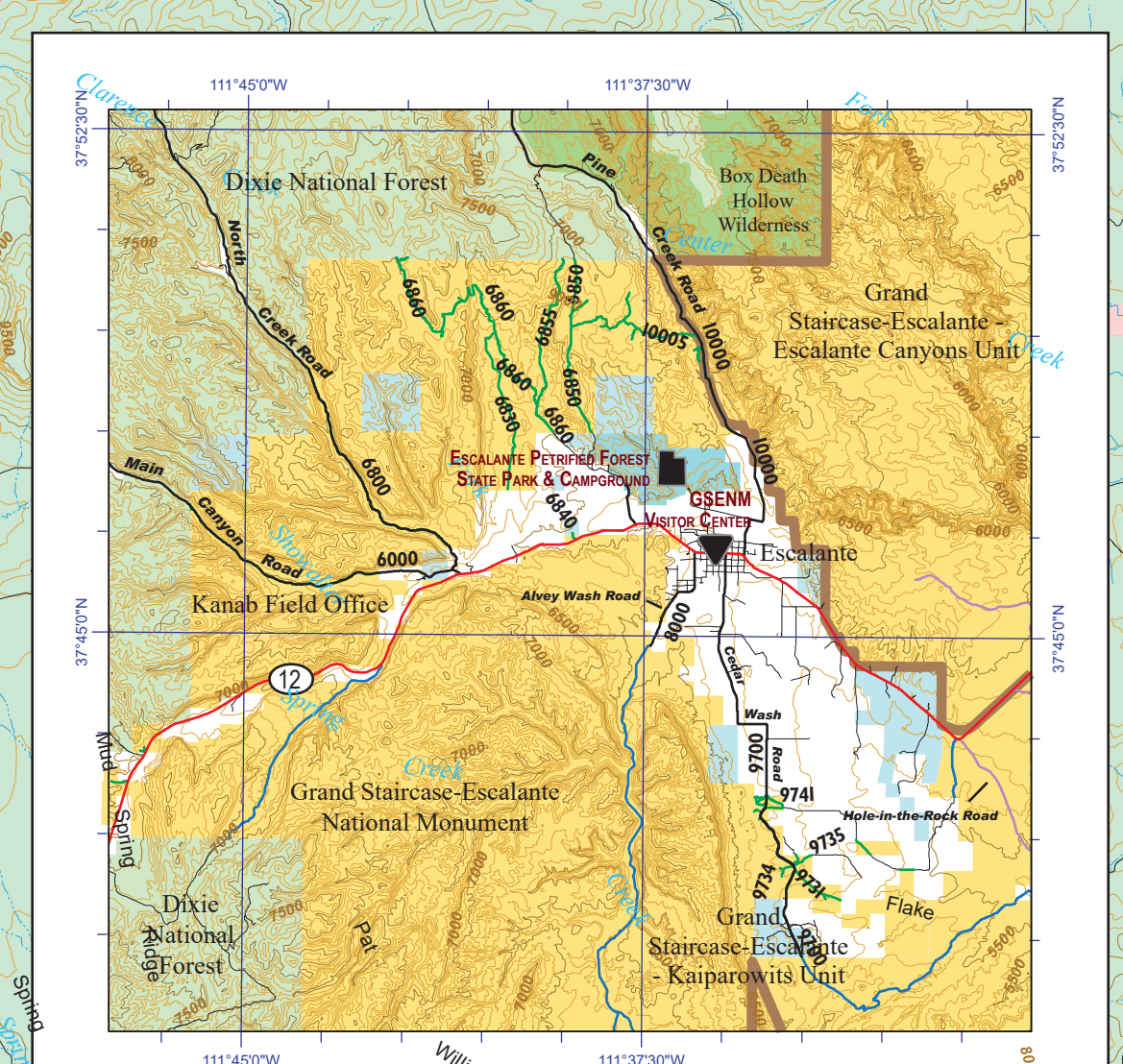
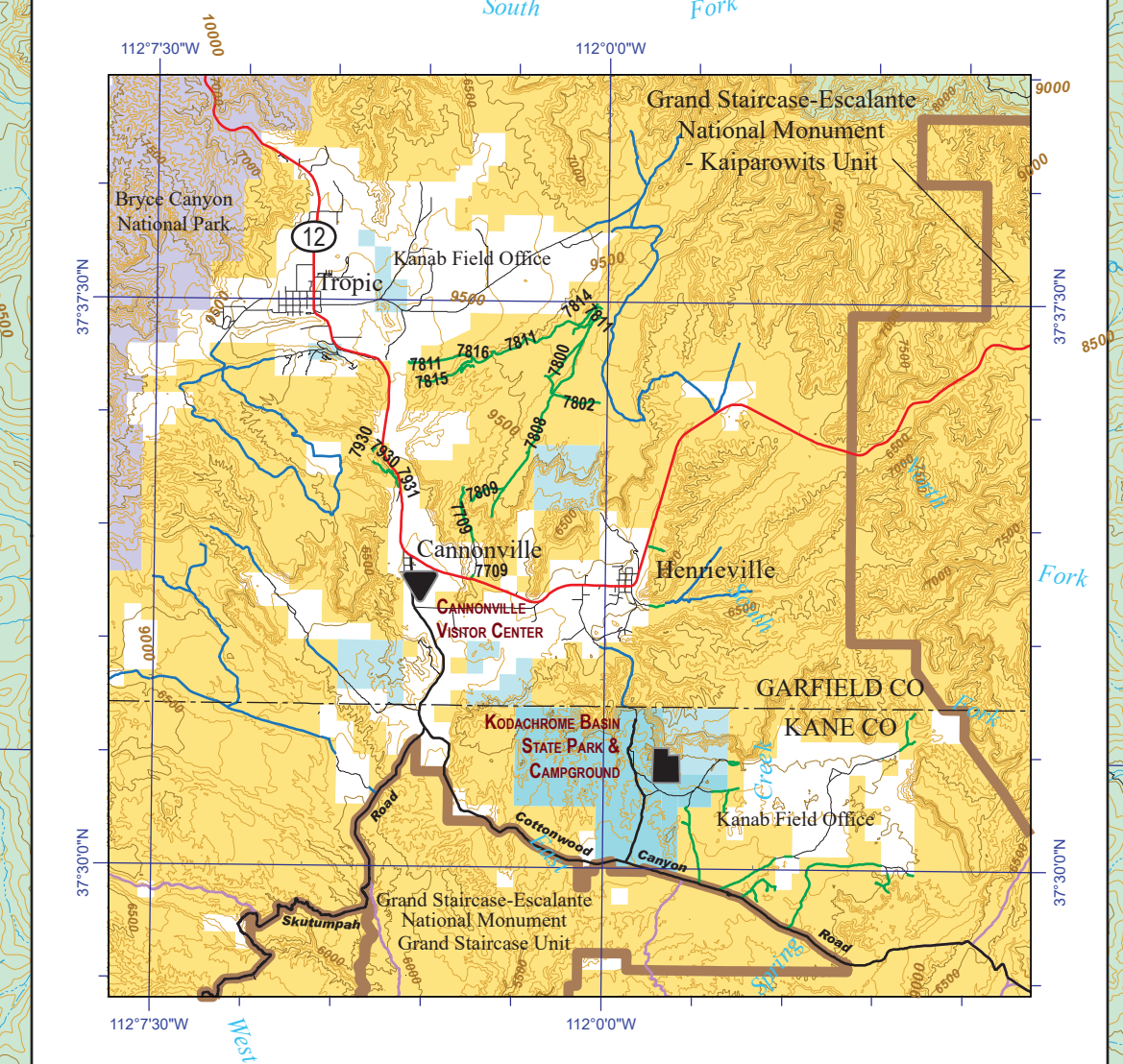
Leave gates open or closed as you find them and please respect private property.



Paria Area Inset Map



Tropic Area Inset Map



Escalante Area Inset Map

