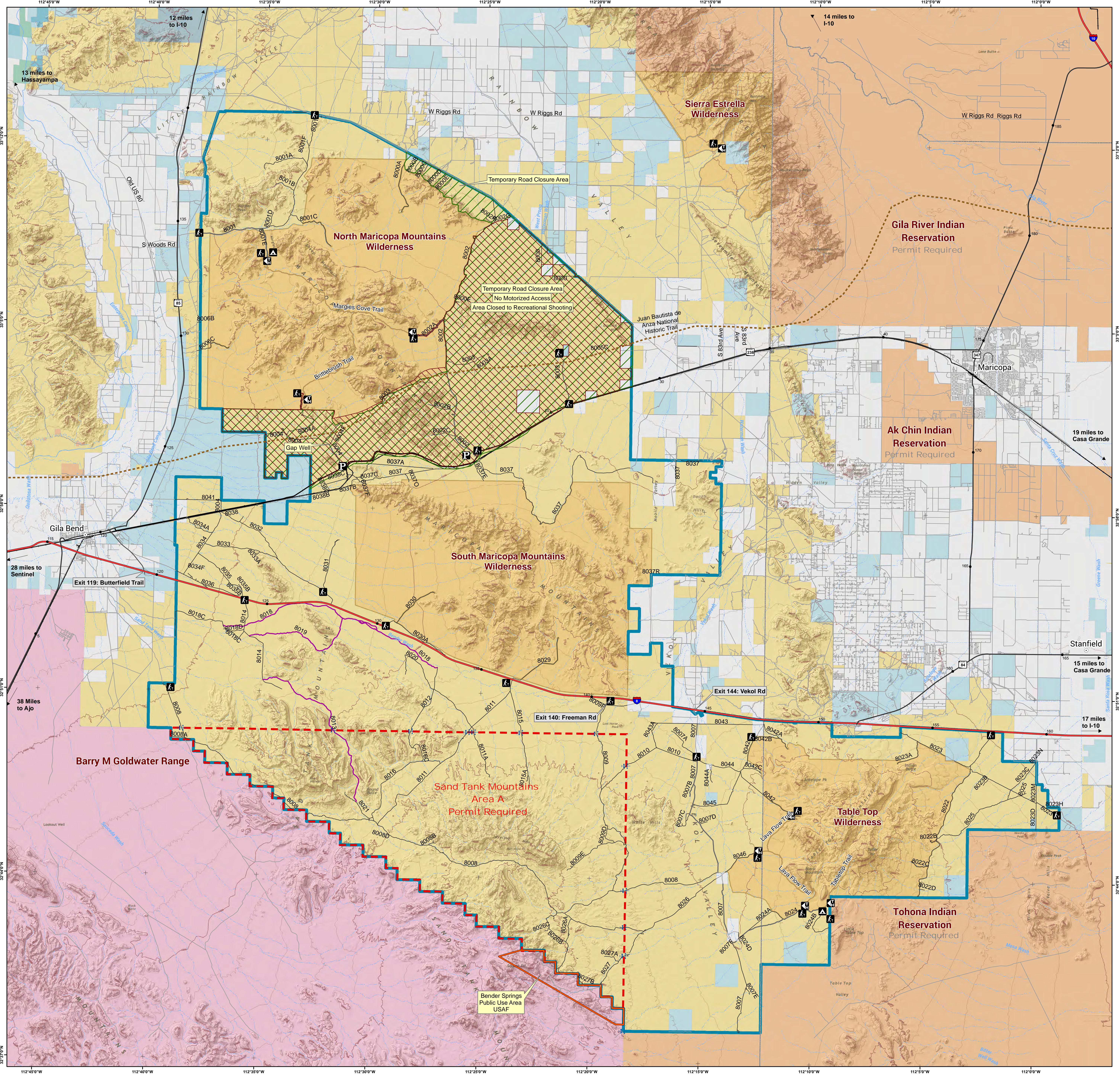


Sonoran Desert National Monument

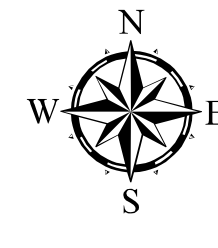


- Mile Marker
- ⊙ Town
- ⊕ Area A Gate
- ⚡ Trail Head
- Ⓟ Kiosk
- Ⓟ Parking Area
- Ⓟ Campground
- Non-Motorized Trail, Pedestrian and Equestrian Only
- Non-Motorized Trail
- Primitive Road
- Primitive Road with Seasonal Restrictions
- Road
- Non-BLM or Other BLM Routes
- Juan Bautista de Anza Trail
- State Highway
- Interstate Highway
- Railroad
- Intermittent Wash
- River
- ▨ Area Closed to Recreational Shooting
- ▨ Temporary Route Closure Area
- ▨ Bender Springs Public Use Area
- ▨ Permit Area A
- ▨ Sonoran Desert National Monument
- ▨ BLM District Office Boundary
- ▨ County Boundary
- ▨ Federal Land within Wilderness Area
- ▨ Wilderness Area Boundary
- ▨ Bureau of Land Management
- ▨ Bureau of Reclamation
- ▨ Indian Lands
- ▨ Local or State Parks
- ▨ Military
- ▨ Private
- ▨ State
- ▨ State Wildlife Area
- ▨ US Fish and Wildlife Service

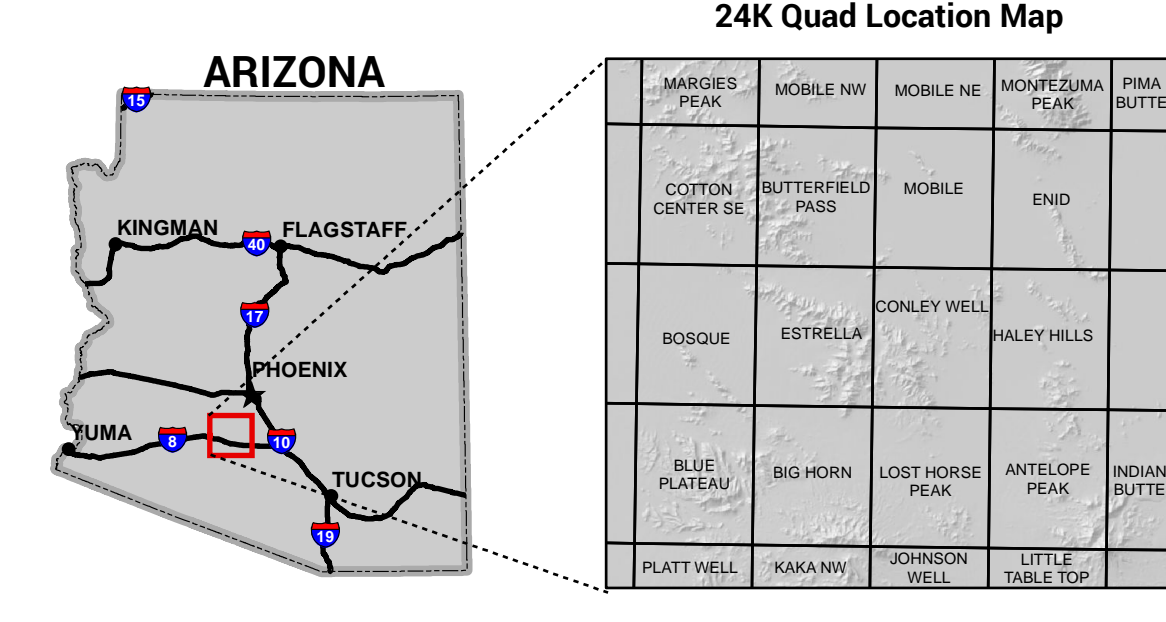
While every effort has been made to ensure the quality of the information presented, the Bureau of Land Management (BLM) makes no warranty regarding the accuracy or completeness of this map. This map and data are representational and are to be used as intended by the BLM. Map data are compiled from various sources. As a result, routes shown on non-BLM land may not be accounted for and/or depicted. This information may not meet National Map Accuracy Standards. This map and the data from which it was derived are not binding on the BLM and may be revised at any time. Travel routes depicted across Arizona State Trust lands do not imply legal public access to use or cross State Trust lands. Any public use of routes on State Trust lands is strictly under the jurisdiction of the Arizona State Land Department, and all users must comply with State policies and regulations in order to legally use or traverse State Trust lands.

BLM Wilderness Areas are limited to non-motorized and non-mechanized travel only

USGS Elevation Measured in feet
Map Projection Universal Transverse Mercator, Zone 12N, NAD83.


 Miles 0 1 2 4 6 8
 Kilometers 0 1 2 4 6 8

UNITED STATES DEPARTMENT OF THE INTERIOR
 BUREAU OF LAND MANAGEMENT
 LOWER SONORAN FIELD OFFICE
 21605 North 7th Avenue
 Phoenix Arizona 85027
 (623) 580-5500
 Date: 8/26/2020



TRAVEL AT YOUR OWN RISK!
The desert backcountry can be DANGEROUS!!!

Unimproved roads and trails are not maintained and are infrequently traveled.

Be prepared for rough terrain, extreme temperatures and potentially dangerous storms with flash flooding.

Road: Route designated for use by low-clearance vehicles having 4+ wheels and maintained for regular continuous use.
Primitive Road: Route designated for use by 4-wheel drive/high clearance vehicles (two-track).
Motorized Trail: Single-track route designated for use by motorcycles and E-bikes.
Non-Motorized Trail: Single-track route managed for use by human-powered and stock forms of transportation or historical or heritage values.

Users will likely encounter gated passages where shown on the map. These are passages into private land and BLM has NO control over locked access to private land.


 Link to map at blm.gov


 Series # 1003-01-02
 Georeferenced map is also available for free download from avenzamaps.com