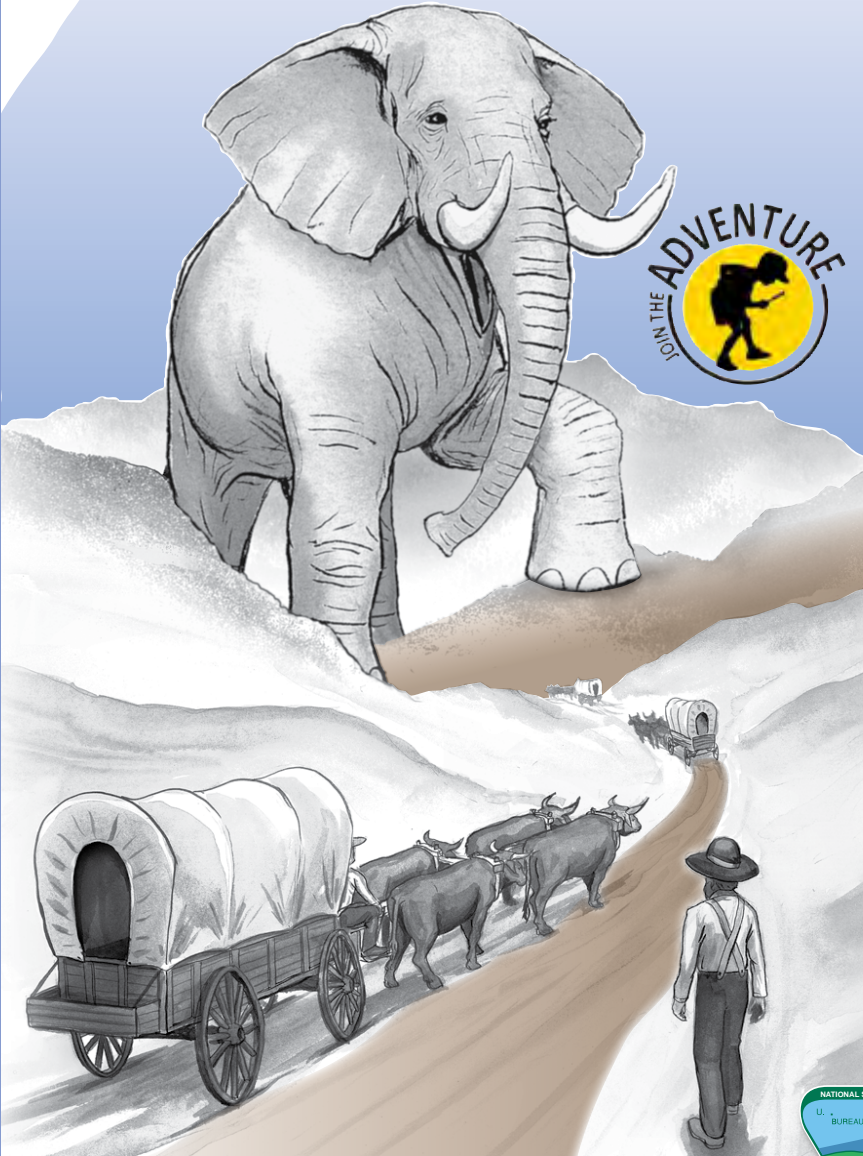


CALIFORNIA TRAIL INTERPRETIVE CENTER

Elko, Nevada

BLM



Junior Explorer



WORDS TO WATCH FOR

Look for these words in **bold** throughout this book!

Emigrant: Someone who moves from one country to another. People who traveled on the California Trail were called emigrants.

Pioneer: person who is among the first to explore or settle a new area. People who crossed over the California Trail are pioneers.

Native American/Indian/American Indian/Indigenous People: Words used to describe people who lived in America before European migration.

Great Basin: Region between the Sierra Nevada and Wasatch Mountains including most of Nevada & parts of California, Idaho, and Utah.

Cholera: A contagious disease, infecting the intestine, usually resulting in death.

Seeing the Elephant: popular phrase used to describe facing the unknown.

Cutoff: A path off the main trail, intended to be a shortcut.

Stewardship: Caring for and protecting resources.

Designed and Created by
Erika Bjorkquist

Project Supervisor
Gary Koy

Cover Art
David Garcia

Graphics
Florida Center for Instructional Technology etc.usf.edu/clipart
Latter Day Products, LLC.
RGBStock.com



Become a Junior Explorer at the California Trail Interpretive Center

What is a Junior Explorer?



A Junior Explorer:

EXamines historical connections

Promotes wise **stewardship** of our land and resources

Learns about our heritage

Observes the plants, animals, and surrounding landscapes

Reveals observations and trail history to others

Empowers his/her mind with knowledge

Raises awareness about historical resources

How do I Become a Junior Explorer?

Explore the exhibits, ask questions, and bring the completed book to a staff member.

If you are 7 or younger, complete the



activities

If you are older than 7, complete the



activities

The mission of the California Trail Interpretive Center is to interpret the California Trail experience, its related themes, and provide educational and cultural enrichment to the general public. Through interpretation, the Trail Center will contribute to the appreciation and preservation of historic and cultural sites. The California Trail Interpretive Center supports the mission of the Bureau of Land Management, as part of the National Landscapes Conservation System, by raising public awareness of the cultural and historical significance of the California Trail with the hope of inspiring others and promoting stewardship of our lands, resources, and cultural heritage.



Have you seen the

ELEPHANT?



Connect the dots to "see" the elephant. For emigrants, seeing the elephant meant that they had been on the California Trail.

Read the panels under the statue of the elephant or talk to an adult to find out what it means to "see the elephant."

Have you ever seen the elephant?



My Fears

1.

2.

3.



Emigrant Fears

1. Leaving loved ones

2. The unknown

3.

4.



Window of OPPORTUNITY



*April 1850,
Today we
embarked on
a _____
mile journey to
California. I was so
excited, I wanted
to leave months
ago but father said
we had to wait for
enough _____ to
grow on the Trail.*



In the store window,
draw what emigrants
bought as supplies for
their journey on the
trail.



Listen closely! What are some of the sounds you hear in the jumping off town?

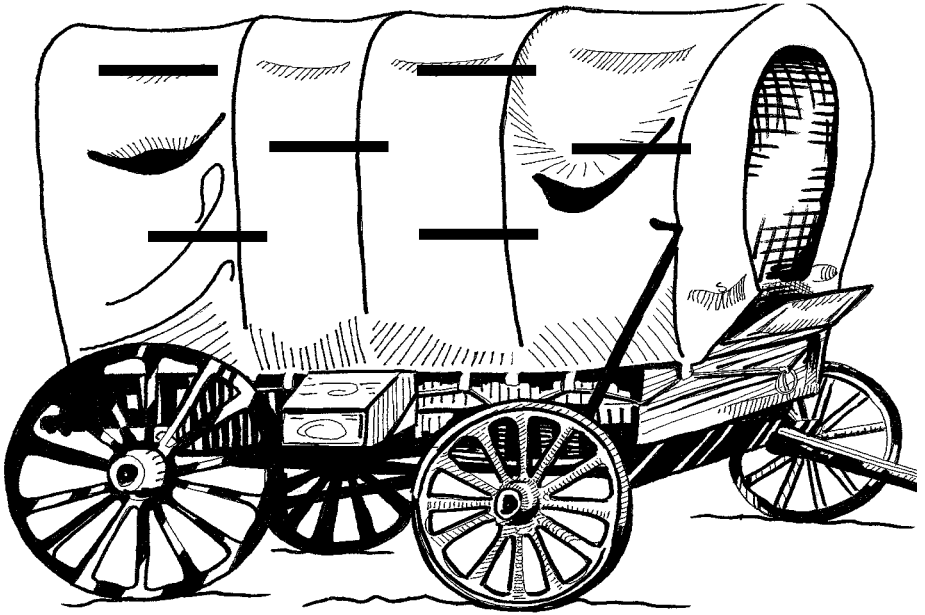


Pack your wagon...

Remember, you can't take it all!



Help the emigrants prepare for their journey by writing the supplies they need on the lines below.



If you were moving and could only bring 3 items with you, what would they be?



Why did some of the emigrants bring different supplies?



April, 1850

We decided to buy _____ to pull our wagons.
My siblings and I decided to name our new
animals, _____ and _____. They are
the best animals for the job because,

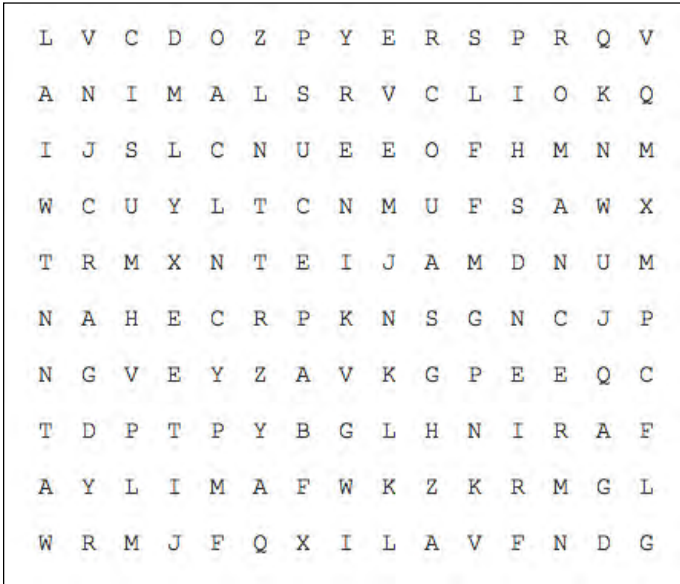
1. _____
2. _____, and
3. _____.

Draw a picture of the animal you would
choose to pull your wagon.





The Good Times...



While some people experienced hardships, they also had fun on the Trail. For many emigrants, the California Trail offered more opportunities to socialize and meet people than they had back home. Find the fun activities emigrants participated in on the trail.

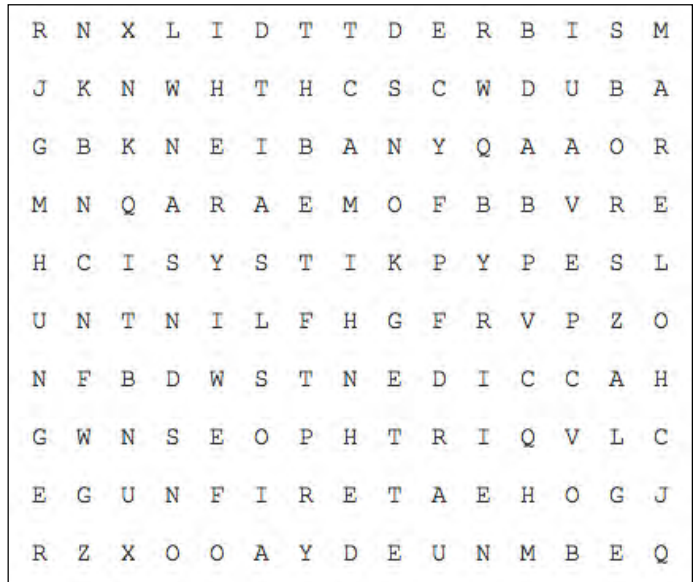
ADVENTURE
ANIMALS
DANCING

FAMILY
FRIENDSHIP
GAMES

MUSIC
ROMANCE
SCENERY

And The Bad.

Many emigrants encountered challenges on the California Trail. Find the words that relate to hardships encountered by emigrants.



ACCIDENTS
CHOLERA
DISEASE

DROWNING
GUNFIRE
HEAT

HUNGER
THIRST
WEATHER

Communication Across Cultures

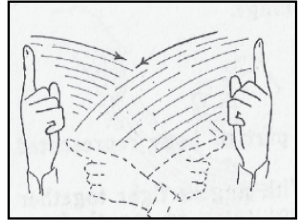
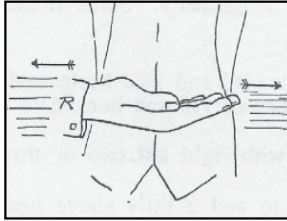
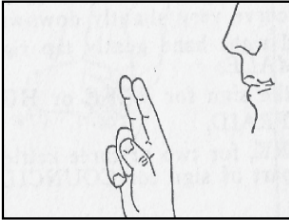


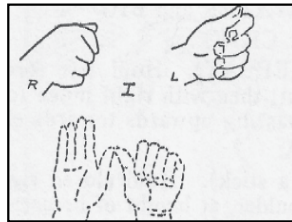
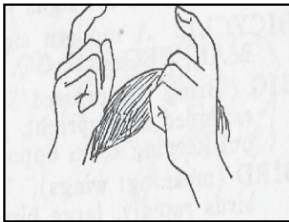
June 1850

Today we met **Indians!** At first, I was scared because I heard they liked to attack wagon trains, but then realized they just wanted to trade with us. It was difficult to figure out what they wanted because they didn't speak our language, but we came up with a way to communicate using _____.

Have you ever communicated with someone who did not understand you? How did you help them understand?

Try your hand at communicating with **Native American** sign language.
Translate the following signs:

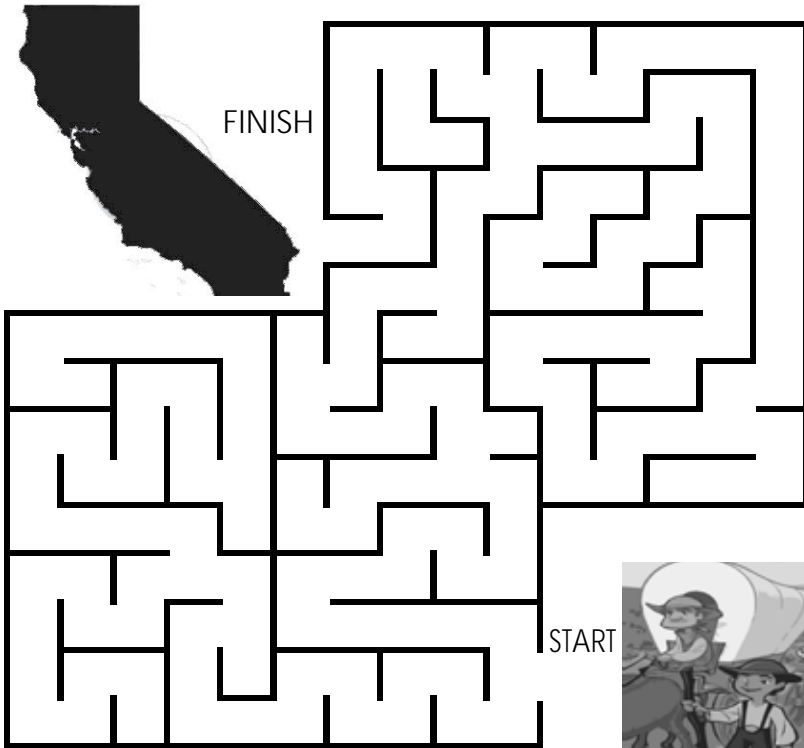






Which is the right way?

Help the emigrants find their way to California!



Have you ever taken a short cut that ended up taking longer than you expected?

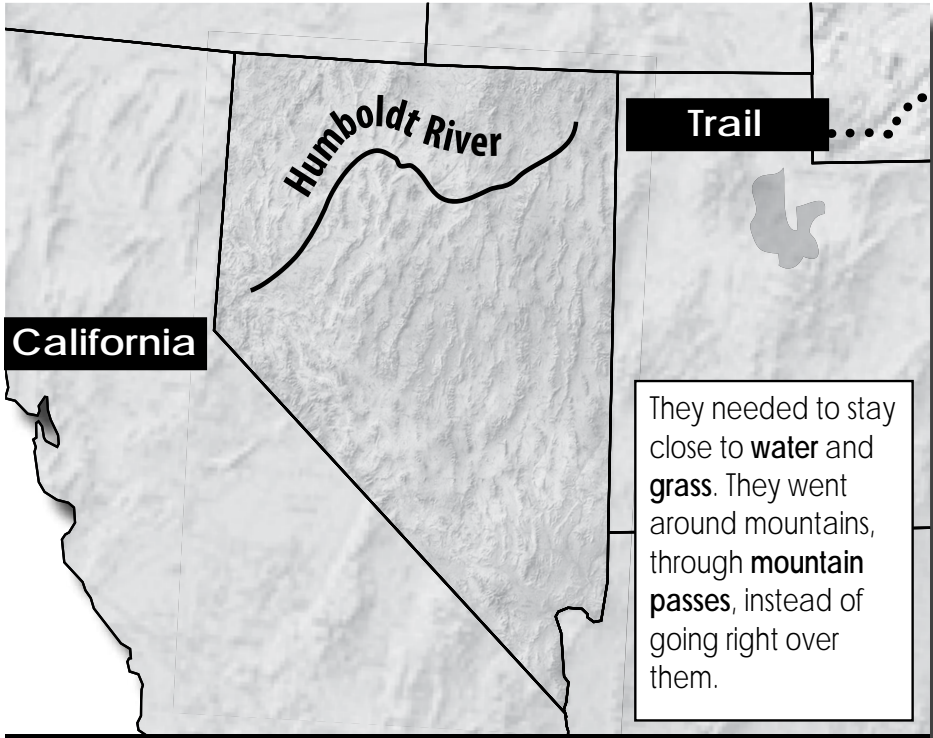
July, 1850

My father wants to get to California quickly. We have heard there are **cutoffs** we can take. A cutoff is _____. I am nervous about taking a different route because I have heard they can be dangerous, lacking in water and grass. I hope we find the right way.



The Trail is Where?

Trace the route the pioneers would take through the Great Basin.



The **Great Basin** was one of the hardest sections of the trail to cross because of the lack of water and food in the area.



August, 1850

Today we reached the _____ River. It is the only water for the next 300 miles! We saw it come out of the ground and I've heard it just sinks back into it. Going through this section of trail is truly seeing the elephant!



California at LAST!



Match the emigrants with their destinations in California.

September 1850,

After ____ months, we finally made it to California! There are **pioneers** everywhere! Many people doing different things. Now that we have arrived, I am most excited about _____.



Miner



Home



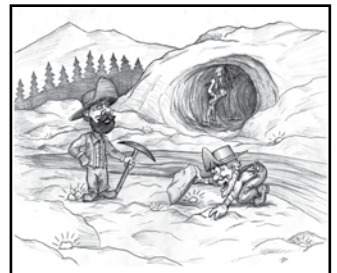
Family



Homestead



Farmer



Gold Fields



Going for the GOLD!

Help the 49ers find 5 golden nuggets!



October 1850

California is booming! People from all over the world have come to strike it rich. Two years after the Gold Rush, people are still coming! In the gold field, I see people from the country of _____ . There are a lot of different ways to mine gold, some are good for the land, othes are not. _____ is a type of mining that is hard on the land.

The Trail Today

In many places, including Nevada, the California Trail is still visible on your public lands. To ensure the protection and preservation of the California Trail and other historic sites on your public lands for future generations, become a STEWARD.

As a BLM Junior Explorer, you can play an important role in caring for the natural and cultural resources on public lands.



Look at the pictures below.



Circle the actions that protect these resources.

Draw an X through the pictures that show actions that would harm these clues to American's past.



As a Bureau of Land Management Junior Explorer, I promise to:

- do all I can to help preserve and protect the natural and cultural resources of our public lands
- be aware of how my actions can affect other living things and evidence of our past
- keep learning about the importance of nature and our heritage
- share what I have learned with others

Explorer Signature and Date

Official Signature and Date

Visit all 3 BLM Historic Emigrant Trail Centers



**California Trail
Interpretive Center**
3900 Idaho Street
Elko, NV 89801
(775) 738-1849

*N***ATIONAL HISTORIC TRAILS INTERPRETIVE CENTER**



**National Historic Trails
Interpretive Center**
1501 N. Poplar Street
Casper, WY 82601
(307) 261-7780
Trailcenter_wy@blm.gov



National Historic Oregon Trail Center at Flagstaff Hill

**National Historic Oregon
Trail Interpretive Center**
22267 Highway 86
P.O. Box 987
Baker City, OR 97814
(541) 523-1843
Oregontrail@blm.gov