



The majority of the motorized use occurs on the western portion of the SRMA. Riders access trails from the Spring Creek Trailhead behind the Eagle County Airport off of Spring Creek Road in Gypsum. Many miles of trail fan out from this location. Much of the trail network on this side of the SRMA is motorized single-track for trail riding. No motocross type riding exists here. Generally, trails towards the south are easier and trails towards the north are harder, with some exceptions.

For more information on trails in this area, visit the Northern Colorado Trail Riders website, <https://nctr.net/>. The Colorado Parks and Wildlife "CoTrex" app can help motorized recreationists keep track of where they are going. Map parcels are available for download and can be used out of cell service.

Motorized Trailheads and Trails



The Hardscrabble-East Eagle SRMA is in GMU 44 and is open to legal hunting, which is regulated by Colorado Parks and Wildlife. However, the discharge of firearms for recreational target shooting is prohibited within 300 feet of centerline of the Spring Creek Access Road. The entire area is classified as limited to designated routes (except for foot and horse travel), including game retrieval. Keep all vehicles on designated roads.

Hunting and Firearms

East of the Town of Eagle, the area is closed to mechanized and motorized use to protect wintering wildlife from Dec. 1 through April 15 except for the Boneyard and Redneck Ridge trails. West of the Town of Eagle, the area is closed to mechanized and motorized use from Jan. 16 through April 15. Winter wildlife closure dates may be extended during harsh winters.

Protecting Wintering Wildlife

Colorado Parks and Wildlife maintains annual seasons and regulations for shed antler hunting to minimize disturbance to wintering wildlife. Be sure to review these seasons and regulations at <https://cpw.state.co.us/antlershed>.

The majority of the SRMA is open to camping. The Spring Trailhead is closed within 1/2 mile of the trailhead. There is a 14-day camping limit on BLM lands from September 1 to March 31 and a 7-day camping limit from April 1 to August 31. Once you've exceeded this limit you must relocate at least a 30-mile radius away and may not return within 30 days to a previous campsite. Please use previously disturbed campsites and be especially careful with fires. Fire restrictions are common in this part of Colorado so check with the BLM office prior to having a fire.

Camping



BLM Photo by Bob Wick



U.S. Department of the Interior
Bureau of Land Management

Hardscrabble-East Eagle

Special Recreation Management Area



Map & Guide

Hardscrabble-East Eagle Special Recreation Management Area

The 21,900-acre Hardscrabble-East Eagle Special Recreation Management Area (SRMA) offers a network of motorized and mountain bike trails in Eagle County. The western portion focuses on motorized recreation, while the eastern portion emphasizes mountain biking opportunities. All of the roads and trails in the SRMA are open to hiking and horseback riding.

The area ranges in elevation from 6,500 to 9,700 feet, with outstanding views of the surrounding mountains and valleys. Sagebrush, pinyon-juniper and Gambel oak grow at the lower elevations. Visitors will find aspen, lodgepole pine and alpine meadows in the higher country. Water is scarce in this area but may be found in several perennial streams, ponds and springs. The Bureau of Land Management, Eagle County Open Space and the towns of Eagle and Gypsum have worked together to make this an outstanding recreational area where you can enjoy an outdoor-oriented lifestyle, develop your recreational skills and improve your physical fitness.

Contact Information

Bureau of Land Management
Colorado River Valley Field Office
2300 River Frontage Road
Silt, CO 81652
(970) 876-9000
www.blm.gov



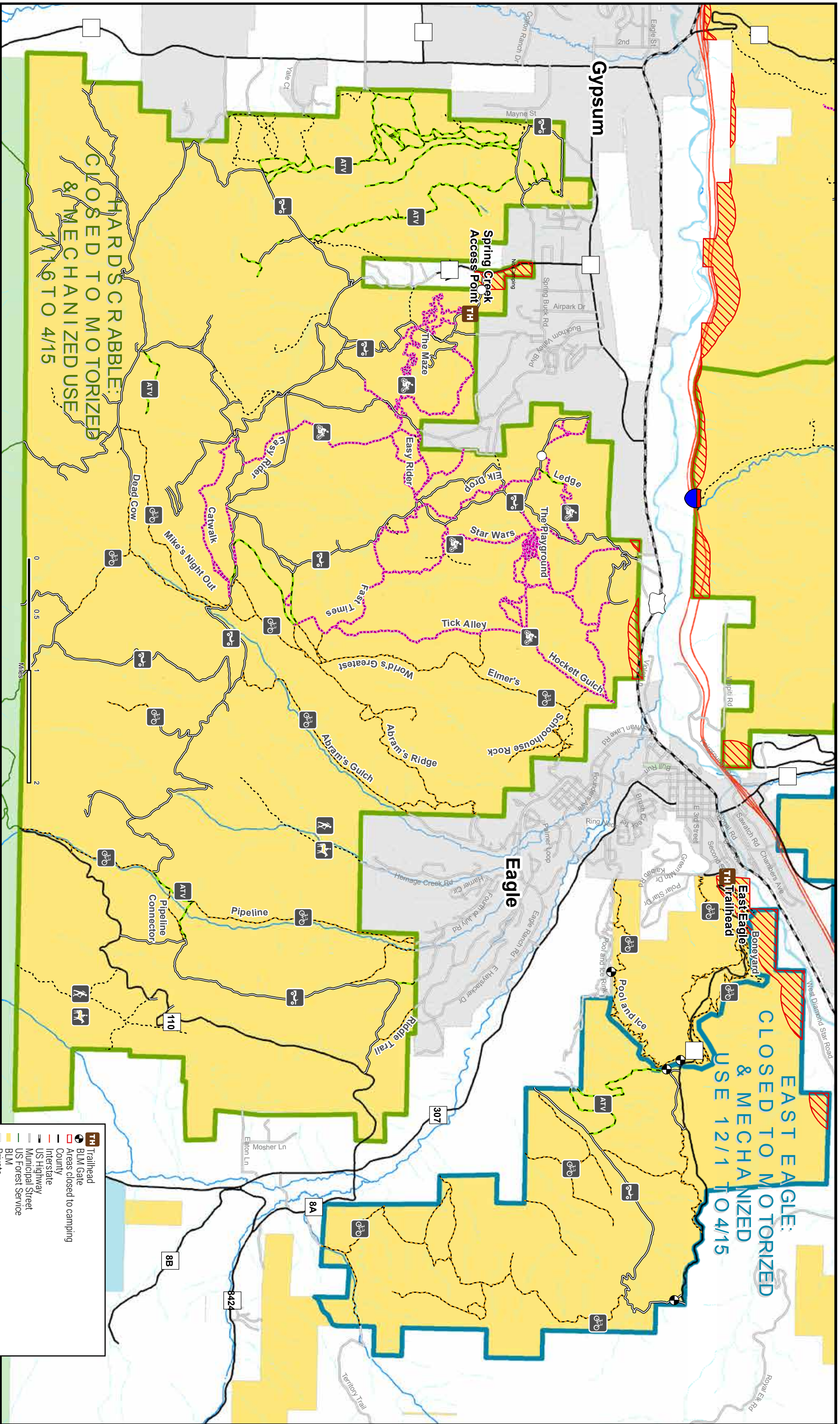
BLM Photo by Bob Wick

Visiting the SRMA

Bike Trailheads and Trails

Most bike use is on the eastern side of the SRMA near Eagle. Popular trailheads include the Pool and Ice Rink, Horton Street, and Abram's Gulch, which are managed by Town of Eagle or Eagle County. These trailheads lead to many popular trails on town, county and BLM lands. Popular trails in this area include Boneyard, Pool and Ice, Love Connection, Hay Maker, and Abram's Ridge. Most of the trails are intermediate in difficulty. Long distances and hard climbs make the trails east of Eagle more difficult.

Please stay on marked designated trails. Unauthorized trails are threatening the legal trails in this area.



HARDS CRABBLE:
 CLOSED TO MOTORIZED
 & MECHANIZED USE
 1/16 TO 4/15

EAST EAGLE:
 CLOSED TO MOTORIZED
 & MECHANIZED
 USE 12/1 TO 4/15

Map created November 2017, Colorado River Valley
 Field Office. No warranty is made by the Bureau of Land
 Management as to the accuracy, reliability, or completeness
 of this data for individual use or aggregate use with other
 data, or for the purposes not intended by the BLM. Spatial
 information may not meet National Map Accuracy Standards.
 This information may be updated without notification.

- Trailhead
 - BLM Gate
 - Areas closed to camping
 - County
 - Interstate
 - US Highway
 - Municipal Street
 - US Forest Service
 - BLM
 - Private
 - State
 - US Forest Service
 - City Limits
- Big Game Winter Closures**
- Closed to motorized and mechanized use 1/16 - 4/15
 - Closed to motorized and mechanized use 12/1 - 4/15