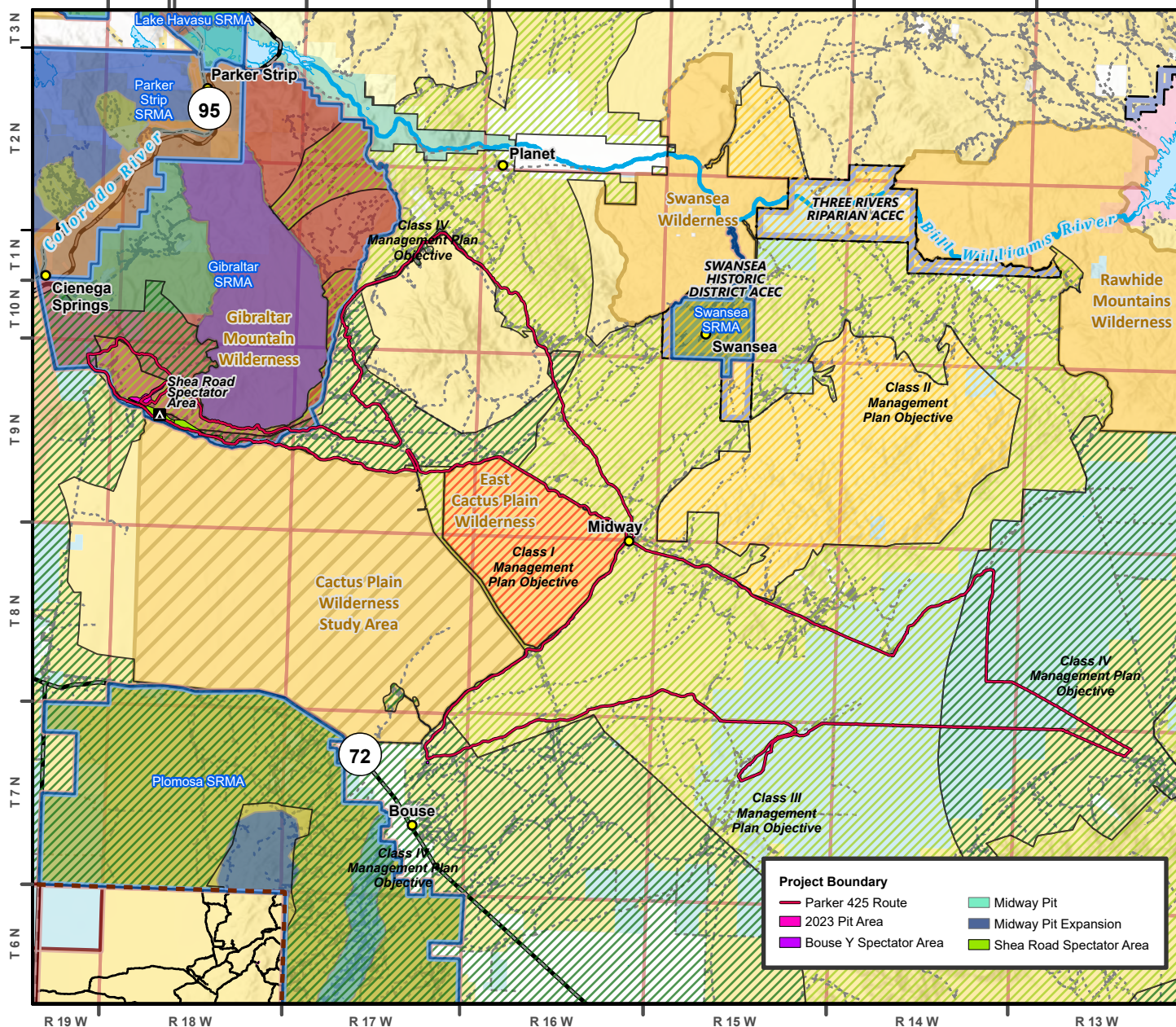
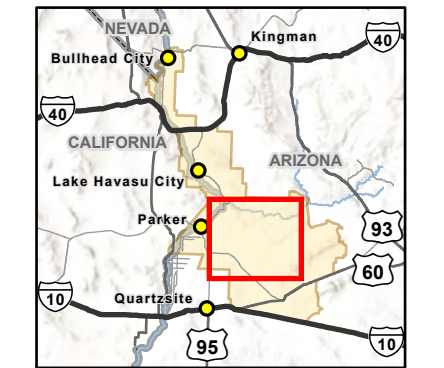


Legacy Racing Parker 400: NEPA

Bureau of Land Management - Colorado River District - Lake Havasu Field Office



Map Location within the Lake Havasu Field Office



- Administrative Unit**
 - Town or Place of Interest
 - ▬ Field Office Boundary
 - ▬ State Boundary
- Transportation**
 - ▬ State Highway
 - ▬ Primitive Road
 - ▬ Primitive Road with Seasonal Restrictions
 - ▬ Route Not Assessed
- Hydrography**
 - ▬ River
 - ▬ Waterbody
- Recreation**
 - ▲ Campground
 - ▬ SRMA
 - ▬ ERMA
- Feature Name**
 - ▬ AZ Shoreline RMZ
 - ▬ Aubrey Hills RMZ
 - ▬ Back Country Byway RMZ
 - ▬ Bouse Plain RMZ
 - ▬ Buckskin Mesa RMZ
 - ▬ CA Shoreline RMZ
 - ▬ Cienega RMZ
 - ▬ Crossroads & Copper-Basin RMZ
 - ▬ Gibraltar Wilderness RMZ
 - ▬ Havasu Springs RMZ
 - ▬ Parker Strip Back Country RMZ
 - ▬ Parker Strip Urban RMZ
 - ▬ Plomosa Mountains RMZ
 - ▬ Shea Hills RMZ
 - ▬ Shea Road/Osborne Wash RMZ
 - ▬ South Lake Havasu RMZ
 - ▬ Swansea RMZ
 - ▬ Whipple Mountains RMZ
- Area of Critical Environmental Concern**
 - ▬ Designated ACEC
- National Conservation Lands**
 - ▬ Wilderness Area Boundary
 - ▬ Federal Land within Wilderness Area
 - ▬ Wilderness Study Area
- Surface Management Agency**
 - ▬ Bureau of Land Management
 - ▬ Bureau of Reclamation
 - ▬ County
 - ▬ Indian Lands
 - ▬ Local or State Parks
 - ▬ Military
 - ▬ Other Federal
 - ▬ Private
 - ▬ State
 - ▬ US Fish and Wildlife Service
- VRM Class**
 - ▬ Class I
 - ▬ Class II
 - ▬ Class III
 - ▬ Class IV

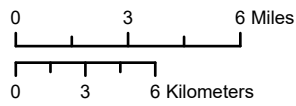
Project Boundary

- ▬ Parker 425 Route
- ▬ 2023 Pit Area
- ▬ Bouse Y Spectator Area
- ▬ Midway Pit
- ▬ Midway Pit Expansion
- ▬ Shea Road Spectator Area



U.S. DEPARTMENT OF THE INTERIOR
BUREAU OF LAND MANAGEMENT

Map Produced by BLM Lake Havasu Field Office Staff
File: BLM_LHFO_LegacyRacingParker400
Date: 6/14/2023
Map Scale: 1:325,000
Coordinate System: NAD 1983 UTM Zone 12N
AZ Reference System: U.S. PLSS GSR
CA Reference System: U.S. PLSS SBM



DISCLAIMER: While every effort has been made to ensure the quality of the information presented, the Bureau of Land Management (BLM) makes no warranty regarding the accuracy or completeness of this map. This map and data are representational and are to be used as intended by the BLM. Map data are compiled from various sources. This map and the data from which it was derived are not binding on the BLM and may be revised at any time.