



National Wild Horse & Burro Advisory Board Meeting December 13, 2023

John Hall
WH&B Program Lead/Florence Prison Facility
Manager
BLM Arizona State Office





Arizona Wild Horses & Burros

- **Arizona WH&B Team**

- 2 WH&B Specialist, 1 Dual Hat (lead/Florence), and 1 Staff Assistant
- Management Support

- **Facilities**

- 1 ORC: Florence Prison WH&B Training, Holding, and Prep facility
- 1 staging facility in Kingman, Arizona

- **Satellite Adoption Team**

- Made up of the Arizona WH&B team along with other BLM employees and volunteers.



Wild Horses & Burros in Arizona

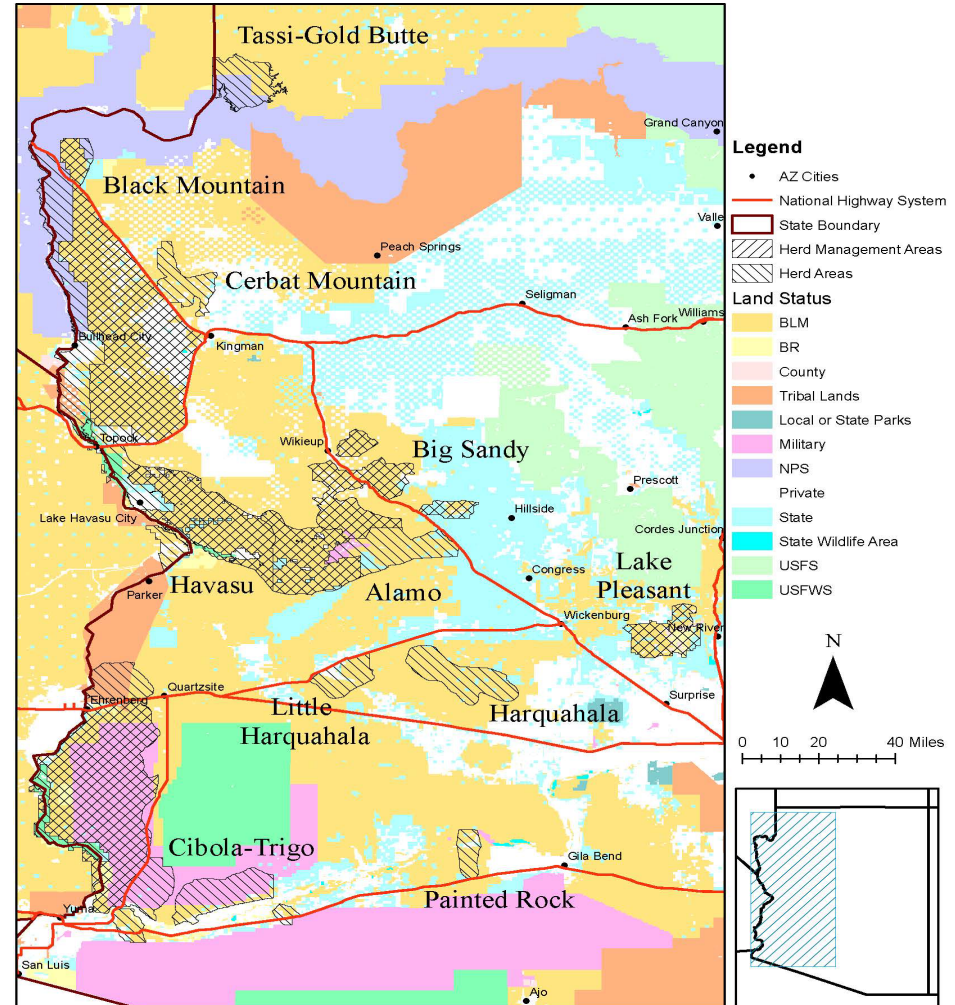




Arizona Wild Horses & Burros

– Where are they?

- The BLM Arizona manages eleven HAs and six HMAs, covering over four million acres total
- Of the eleven HA's managed by the BLM Arizona, six are closely related to the HMAs and overlap considerably.



Wild Horses and Burros in Arizona

- Estimate As of **March 01, 2023**, was = **5,492**
 - **5,027 wild burros**
 - **465 wild horses**
- FY-22 removals: 1,297
- FY-23 removals: 756
- Arizona AML = 1,676
(1,436 Burros & 240 Horses)



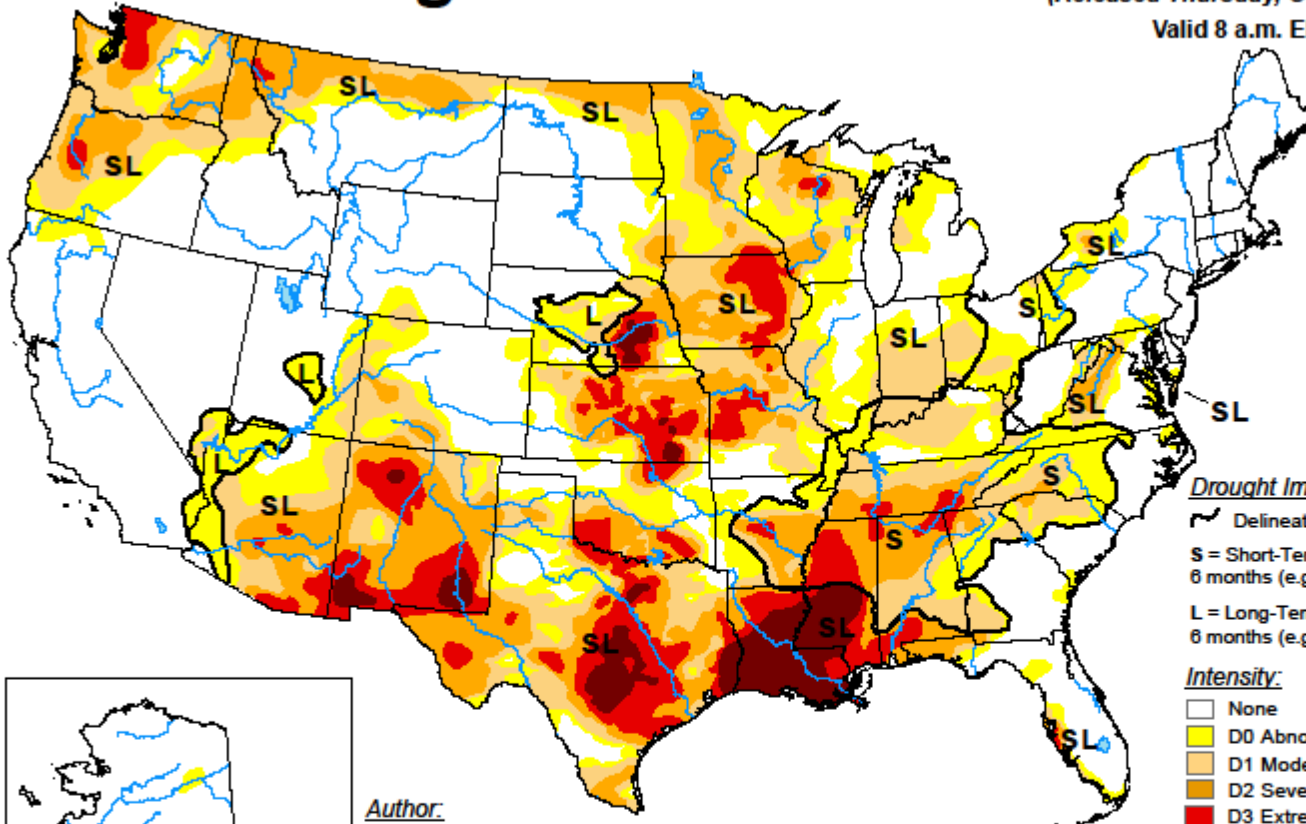
Arizona Wild Horse & Burro Management





U.S. Drought Monitor

October 24, 2023
(Released Thursday, Oct. 26, 2023)
Valid 8 a.m. EDT

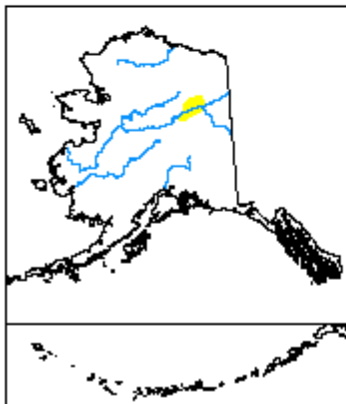


Drought Impact Types:

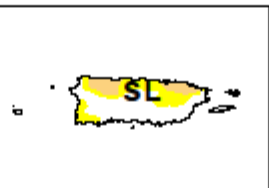
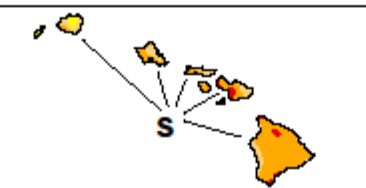
- Delineates dominant impacts
- S** = Short-Term, typically less than 6 months (e.g. agriculture, grasslands)
- L** = Long-Term, typically greater than 6 months (e.g. hydrology, ecology)

Intensity:

- None
- D0 Abnormally Dry
- D1 Moderate Drought
- D2 Severe Drought
- D3 Extreme Drought
- D4 Exceptional Drought



Author:
Rocky Bilotta
NCEI/NOAA



The Drought Monitor focuses on broad-scale conditions. Local conditions may vary. For more information on the Drought Monitor, go to <https://droughtmonitor.unl.edu/About.aspx>



droughtmonitor.unl.edu





BLM Arizona WH&B Strategy FY21-FY26

- Establish AML ranges for all areas to be managed
- Gather to AML, then maintain AML within established ranges
 - Large AML level contract gathers to achieve AML ASAP
- Smaller, periodic in house gathers to maintain AML
- Additional Staffing:
 - Additional GS-7/9/11 WHB Specialist:
 - Management of CRD South HA/HMAs
 - Supplement existing GS-11 WHB Specialist (District Lead/mgmt. of CRD North HA/HMA)
 - Additional GS-11 WHB Specialist: Position Filled
 - Assist with day-to-day work at Florence
 - Management of Phoenix area HA/HMA
 - Phoenix area compliance inspections





Black Mountain HMA

- Located in extreme NW Arizona approximately 15 miles west of Kingman, Arizona
- Largest HMA in Arizona at 1.1 million acres
- This region is volcanic in origin, resulting in an area that is characterized by large mesas, steep cliffs, slopes, rocky foothills, alluvial fans and sandy washes.
- AML is approximately 478





Black Mountain Wild Burro Gather May FY22

- Helicopter gather of approximately 1,100 Wild Burros due to overpopulation and habitat destruction
- Gather took approximately one month
- 9 females from the HSUS project were treated and released
- No deaths or significant events occurred during the gather
- Largest burro gather in Arizona history





Black Mountain Wild Burro Gather Oct.-April 2023

- Bait Trap gather of approximately 700 Wild Burros due to overpopulation and habitat destruction
- Gather took approximately 6 months
- 9 females from the HSUS project were treated and released
- 539 burros were captured and removed by a contractor



Bushnell Camera Name 100°F37°C 05-03-2015 14:47:44



Bushnell Camera Name 70°F21°C 05-03-2015 21:44:35





Black Mountain Wild Burro Gather Upcoming Jan 2024

- Helicopter gather up to 1,000 burros
- Gather expected to take 2 months
- Up to 100 females from the HSUS project will be treated with PZP and released back to the area where they were caught
- Population survey to be completed immediately after gather to estimate achievement of AML

Cibola Trigo

- Located in SW Arizona North of Yuma, AZ along the Colorado River
- Approximately 179,000 acres
- This region of the lower Sonoran Desert is characterized by broad valleys and desert plains having gentle slopes and sparse vegetation, with rocky, sharply eroded desert mountain ranges abruptly ridging the gentle terrain
- AML is approximately 165





Lake Pleasant

- Located 25 miles NW of Phoenix, AZ
- Approximately 103,000 acres
- The area's rugged mountains, numerous small canyons and open rolling hills cut across the HMA landscape.
- The vegetation is typical of the upper Sonoran Desert, where paloverde and mixed cacti are common.
- ASO WHB specialist is currently in the process of revising AML to reflect current conditions in the HMA



Three Rivers (Alamo, Big Sandy, Havasu HMAs)

- Located on the Big Sandy River, near Alamo Lake, and Lake Havasu.
- Combined approximately 1 million acres.
- The area's rugged mountains, numerous small canyons and open rolling hills cut across the HMA landscape.
- Vegetation includes plants typical to Arizona's interior chaparral, grasslands and lower Sonoran Desert shrub communities.
- 10 year management plan draft EA was posted for public comment and closed October 11.
 - CRD currently addressing comments and finalizing EA for Decision.
- Combined AML is 372-465.





BLM Arizona Herd Management Areas



- | | | |
|----------------------|----------------------------------|------------------------------|
| City | Surface Management Agency | National Park Service |
| Herd Management Area | Bureau of Land Management | Other |
| BLM District Office | Bureau of Reclamation | Private |
| BLM Field Office | Bankhead-Jones Act | State |
| Interstate Highway | County | State Wildlife Area |
| US Highway | Indian Lands | US Forest Service |
| State Highway | Local or State Parks | US Fish and Wildlife Service |
| | Military | |



No warranty is made by the Bureau of Land Management as to the accuracy, reliability, or completeness of these data for individual use or aggregate use with other data.

Map Produced by the BLM Arizona State Office Date: 9/6/2019



BLM Arizona Adoptions/Sales

- Arizona BLM averages 700 adoptions/sales a year
- Placement is a combination of direct from Florence, TIP, Satellite events, and sales.
- Arizona BLM typically holds 5-7 adoption or demo events yearly.



Partnerships: University of Arizona School of Veterinarian Medicine





Partnerships: Trainer Incentive Program





Partnerships: Trainer Incentive Program





Partnerships: Trainer Incentive Program





Partnerships: Trainer Incentive Program





U.S. Department of the Interior
Bureau of Land Management

Partnerships: Trainer Incentive Program





Partnerships: Trainer Incentive Program





Partnerships: Florence Prison Training and Holding Facility





Partnerships: Peaceful Valley Donkey Rescue



- Sale of 3,000 wild burros over the next 5 years
- BLM AZ has sold approximately 1,500 wild burros to PVDR over last 3 years
- Sales include mostly intact jacks
 - PVDR partners with Texas Tech Vet School to complete castrations utilizing students in the equine vet program
- PVDR has placed approximately 9,200 burros into homes over the last 20 years



Management Challenges

- Significant overpopulation of WH&Bs across AZ
- Current population estimate is approximately 3 ½ times the state-wide AML of 1,956
- All HMAs are over AML – several 4-5 times the established AML
- Shortage of water is impacting HMAs annually
- Program-wide budget limitations and other Program priorities is limiting Arizona's ability to achieve AMLs.
- Increasing private property and public safety concerns across the state due to expanding populations.
 - Vehicle collisions are a major concern with burros given their curious nature.





Have questions?

