

Weber Mountain & Menefee Mountain Wilderness Study Areas

What is a Wilderness Study Area?

A Wilderness Study Area (WSA) is a parcel of public land, found during a nationwide inventory process in the late 1970s, to contain wilderness characteristics including size, natural appearance, and outstanding opportunities for primitive recreation or solitude. There may also be 'supplemental values' such as geology and archaeology, for example. The designation of a WSA served to identify areas for Congress to consider adding to the National Wilderness Preservation System. Until Congress determines otherwise, these areas are managed by the Bureau of Land Management to protect these unique characteristics.

Why Weber Mountain?

The central feature of this WSA is Weber Mountain, a linear-shaped mountain from which numerous short canyons radiate. Both Menefee Mountain to the east, and Weber Mountain, are part of the same geologic landform as Mesa Verde National Park. Weber Mountain WSA was isolated from Mesa Verde by the cutting action of the Mancos River. The WSA contains archeological sites related to the Ancestral Puebloan culture which populated the area from A.D. 450-1300. The rugged terrain provides challenging opportunities for hiking, backpacking, and climbing. Access to the top of the mountain is strenuous, but the reward is panoramic views of the LaPlata Mountains, Lone Cone, and Mesa Verde, the Abajo Mountains in Utah, and the Carrizo and Chuska Mountains and Shiprock in New Mexico.

Why Menefee Mountain?

The central feature of this WSA is Menefee Mountain, a north/south trending linear-shaped mountain about 6 miles long and 1-2 miles wide from which numerous short canyons radiate. Both Weber Mountain to the west, and Menefee Mountain, are part of the same geologic landform as Mesa Verde National Park. Menefee Mountain WSA contains archeological sites related to the Ancestral Puebloan culture which populated the area from A.D. 450-1300. Despite a 2012 wildfire which decimated most of the pinyon-juniper and scattered ponderosa pine overstory, the deep drainages still provide for solitude to the modern visitor. The vast views, perhaps even enhanced by the wildfire, remain awe inspiring and contribute to the feeling of remoteness and grandeur of the area for visiting hunters, hikers, photographers, and bird watchers.

Visit with Respect:

This area is special, so we need your help to protect it. Take only photographs and memories, leaving artifacts and other natural items where you found them for others to enjoy. This area is closed to motorized vehicles. Please use trails, sandy, or rocky places when walking or riding your horse. If these surfaces are not available, spread out and avoid newly impacted areas. When camping, look for already established campsites.

Know Before you Go:

Be sure you know the area and what hazards to expect. Bring adequate food, water, and equipment-including a map or compass and know how to use them. It can be difficult or impossible to call for help, so let someone know where you will be and when you plan to return. Always pack out everything you packed in, and enjoy your experience.

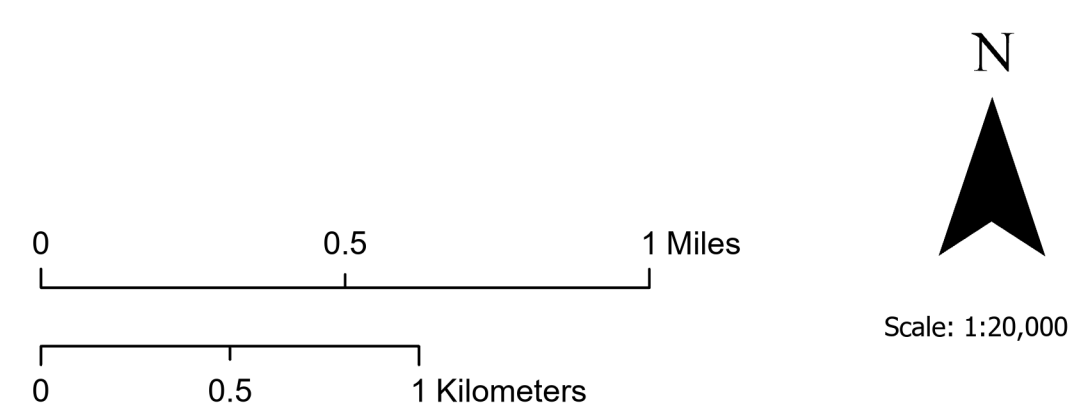
The Access Points identified on this map are not signed or designated trailheads. Instead, they represent a few possible points of access to the WSA. There are no planned or maintained trails within the WSA. However, this map is a GeoPDF and is intended for use in Avenza's PDF Maps APP available for Android and IOS devices. When used with Avenza's Map app, you can locate yourself within the map area for navigational purposes. Please refer to the AvenzaMaps web site for more information about using the APP.

PLEASE DO NOT

- Construct new trails.
- Use bicycles or motorized vehicles (including OHVs) in the area.

For More Information Contact
 BLM Tres Rios Field Office
 29211 Highway 184
 Dolores, CO 81323
 Phone: 970-882-1120

- County Maintained Roads
- Open to all modes of transportation
- Open to class 1 e-bikes, bikes, hikers, and equestrians
- Wilderness Study Area
- Bureau of Land Management
- National Park Service
- Private
- State
- US Forest Service



No warranty is made by the Bureau of Land Management as to the accuracy, reliability, or completeness of these data for individual use or aggregate use with other data, or for the purposes not intended by the BLM. Spatial information may not meet National Map Accuracy Standards. This information may be updated without notification.

